

LEA Name : Spring-Ford Area SD  
Address : 857 South Lewis Road  
Royersford , PA 19468

County : Montgomery  
AUN Number : 123467303  
LEA Type : SD

## Annual Financial Report Accuracy Certification Statement

For Fiscal Year Ending

**6/30/2019**

Pennsylvania Department of Education


&

Office of Comptroller Operations

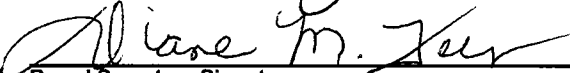
PDE-2056: Intermediate Unit

PDE-2057: School District, AVTS/CTC, Charter School,  
and Special Program Jointure

**CERTIFICATION: By signing this page I agree that the electronic data submitted is a complete and accurate statement of the financial operations and status of the local education agency for the fiscal year. It has been prepared in accordance with generally accepted accounting principles and established Commonwealth of PA reporting guidelines.**

  
\_\_\_\_\_  
Chief School Administrator Signature

11-27-19  
\_\_\_\_\_  
Date

  
\_\_\_\_\_  
Board Secretary Signature

11/27/19  
\_\_\_\_\_  
Date

Mary Davidheiser  
\_\_\_\_\_  
Contact Person

(610)705-6137      Ext :  
\_\_\_\_\_  
Contact Person Telephone Number

mdavi@spring-ford.net  
\_\_\_\_\_  
Contact Person E-mail Address

\_\_\_\_\_  
Contact Person Fax Number

**Audit Certification**  
**Annual Financial Report:**  
For Fiscal Year Ending **6/30/2019**  
**(Pursuant to PA School Code Section 218(b))**

LEA Name : Spring-Ford Area SD  
AUN Number : 123467303  
County : Montgomery

<b>Audit Certification Due:</b> 12/31/2019
---

This certification is applicable to the Annual Financial Report data submitted through the Consolidated Financial Reporting System on: 11/27/2019  
Date

**Auditing Firm:**  
Maillie

CERTIFICATION: By signing this page I agree that the financial statements of the school have been properly audited as noted above pursuant to Article XXIV, and in the auditor's professional opinion, the Annual Financial Report (PDE-2057) submitted on the date referenced is materially consistent with the audited financial statements.

Chief School Administrator

  
Signature 12-20-19  
Date

Mary Davidheiser

Contact Person

mdavi@spring-ford.net

Contact Person E-mail Address

Board Secretary

  
Signature 12/20/19  
Date

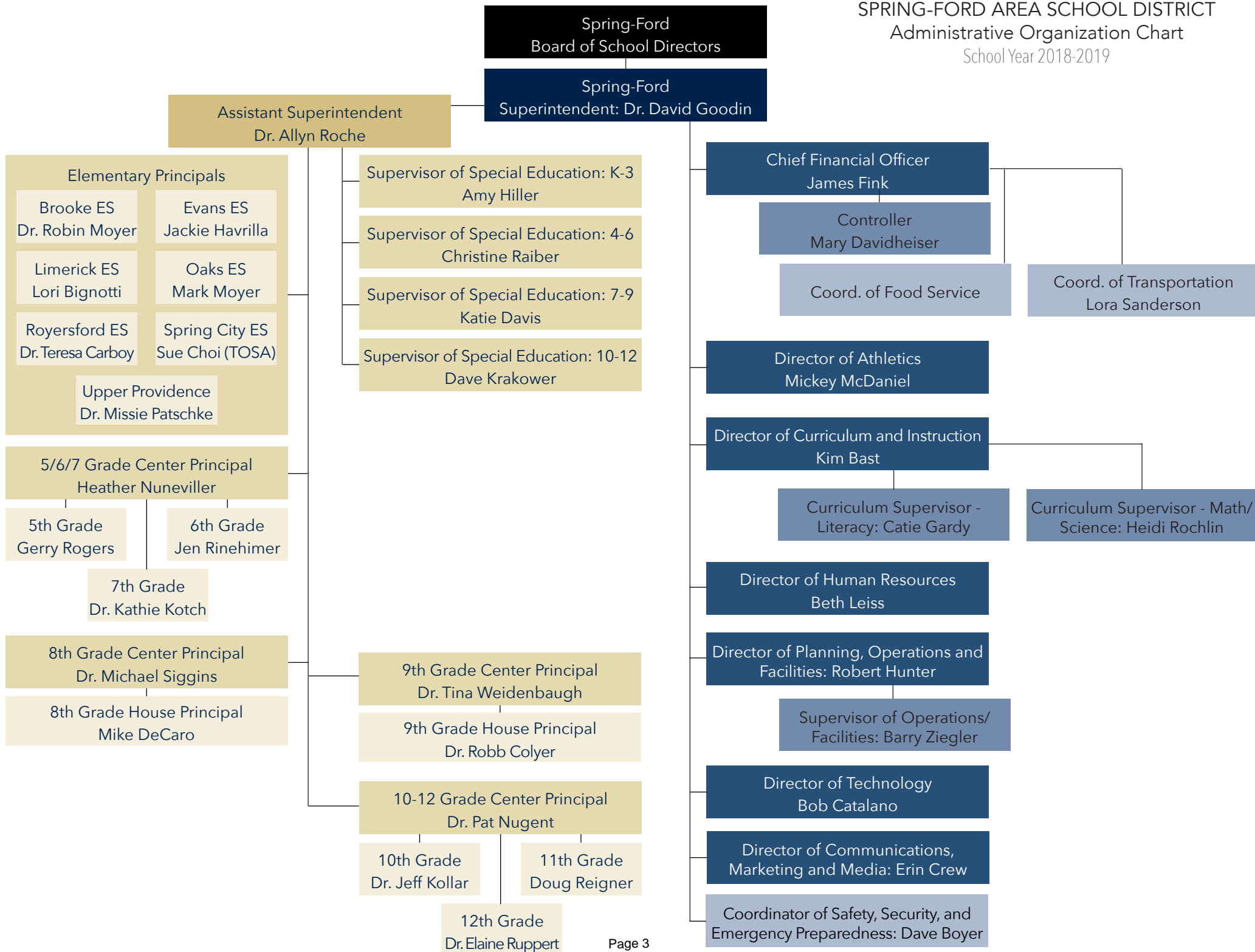
(610)705-6137

Ext :

Contact Person Telephone Number

Contact Person Fax Number

SPRING-FORD AREA SCHOOL DISTRICT  
 Administrative Organization Chart  
 School Year 2018-2019



<u>Val Number</u>	<u>Description</u>	<u>Justification</u>
16015	<p>REP Fund 51: Object 300 is greater than object 500. Purchased services for food service contracted services should be coded to objects 571 and 572. Correct or enter a justification.</p> <p>REP Fund 51 Object 300: \$11,984.00            REP Fund 51 Object 500: \$2,804.00</p>	<p>Consulting services (coded to 330) were rendered for consultation of the RFP and bidding process to acquire the outside vendor for our food service management.</p>
30501	<p>Revenue Detail: AFR amount must equal PDE FAI system amount.</p> <p>7311, AFR Rev Detail: \$1,804,054.11            7311, PDE FAI System: \$1,599,410.11</p>	<p>The FAI System shows only cash receipts for 2018/2019, while the amounts entered in the AFR reflect the revenue recognized (earned) in 2018/19. AFR amounts include those received for years 17/18 (that were not previously recognized in revenue) and 18/19.</p>
50400	<p>SESS - 2120 Guidance Services: SESS Schedule amounts for Special Education vary from prior year by 40% or more. Correct the data or enter a justification.</p> <p>SESS Schedule 2120: \$370,800.00            Prior Year SESS Schedule 2120: \$213,964.75</p>	<p>Additional guidance Services per IEPs needed and proper coding of services.</p>
50450	<p>SESS - 2350 Legal and Accounting Services: SESS Schedule amounts for Special Education vary from prior year by 40% or more. Correct the data or enter a justification.</p> <p>SESS Schedule 2350: \$116,360.78            Prior Year SESS Schedule 2350: \$38,193.48</p>	<p>Additional legal Services per IEPs needed and proper coding of services.</p>

Amounts Expressed in Whole Dollars	<u>General Fund</u> <u>(10)</u>	<u>Public Purpose Trust</u> <u>(27)</u>	<u>Other Compt Approved</u> <u>(28)</u>	<u>Athletic / Activity</u> <u>(29)</u>	<u>Capital Reserve (690.</u> <u>1850)</u> <u>(31)</u>
<b>Assets And Deferred Outflows Of Resources</b>					
<b>Assets</b>					
0100 Cash and Cash Equivalents	40,954,786				
0110 Investments	6,077,089				
0120 Taxes Receivable	1,584,026				
0130 Due From Other Funds	1,642,400				
0141 Due From Other Governments					
0142 State Revenue Receivable	7,072,751				
0143 Federal Revenue Receivable	2,038,580				
0145 Other Intergovernmental Revenue Receivable					
0146 Due from Primary Government					
0147 Due from Component Unit					
0150 Other Receivables	454,248				
0170 Inventories					
0180 Prepaid Expenses (Expenditures)	718,446				
0190 Other Current Assets					
<b>Total Assets</b>	<b>\$60,542,326</b>				
0910 Deferred Outflows of Resources					
<b>Total Assets And Deferred Outflows Of Resources</b>	<b>\$60,542,326</b>				

Amounts Expressed in Whole Dollars

	<u>Capital Reserve (1431)</u> <u>(32)</u>	<u>Other Capital Projects</u> <u>Fund</u> <u>(39)</u>	<u>Debt Service</u> <u>(40)</u>	<u>Permanent</u> <u>(90)</u>	<u>Total Governmental</u> <u>Funds</u>
<b>Assets And Deferred Outflows Of Resources</b>					
<b>Assets</b>					
0100 Cash and Cash Equivalents	9,675,576	3,188,568	5,097,202		58,916,132
0110 Investments	1,170,818				7,247,907
0120 Taxes Receivable					1,584,026
0130 Due From Other Funds			1,100,000		2,742,400
0141 Due From Other Governments					
0142 State Revenue Receivable					7,072,751
0143 Federal Revenue Receivable					2,038,580
0145 Other Intergovernmental Revenue Receivable					
0146 Due from Primary Government					
0147 Due from Component Unit					
0150 Other Receivables					454,248
0170 Inventories					
0180 Prepaid Expenses (Expenditures)					718,446
0190 Other Current Assets					
<b>Total Assets</b>	<b>\$10,846,394</b>	<b>\$3,188,568</b>	<b>\$6,197,202</b>		<b>\$80,774,490</b>
0910 Deferred Outflows of Resources					
<b>Total Assets And Deferred Outflows Of Resources</b>	<b>\$10,846,394</b>	<b>\$3,188,568</b>	<b>\$6,197,202</b>		<b>\$80,774,490</b>

Amounts Expressed in Whole Dollars

	<u>General Fund</u> <u>(10)</u>	<u>Public Purpose Trust</u> <u>(27)</u>	<u>Other Compt Approved</u> <u>(28)</u>	<u>Athletic / Activity</u> <u>(29)</u>	<u>Capital Reserve (690.</u> <u>1850)</u> <u>(31)</u>
<b>Liabilities And Deferred Inflows Of Resources And Fund Balances</b>					
<b>Liabilities</b>					
0400 Due to Other Funds	8,516,510				
0411 Due to Other Governments					
0412 Due to Primary Government					
0413 Due to Component Unit					
0420 Accounts Payable	3,120,199				
0430 Contracts Payable					
0440 Current Portion of Long-Term Debt	886,406				
0450 Short-Term Payables					
0461 Accrued Salaries and Benefits	18,884,663				
0462 Payroll Deductions and Withholding					
0480 Unearned Revenues	1,786,246				
0490 Other Current Liabilities	1,794,837				
<b>Total Liabilities</b>	<b>\$34,988,861</b>				
0950 Deferred Inflows of Resources					
<b>Fund Balances</b>					
0810 Nonspendable Fund Balance	1,023,167				
0820 Restricted Fund Balance	1,515,917				
0830 Committed Fund Balance	2,886,152				
0840 Assigned Fund Balance	7,644,312				
0850 Unassigned Fund Balance	12,483,917				
<b>Total Fund Balances</b>	<b>\$25,553,465</b>				
<b>Total Liabilities, Deferred Inflows Of Resources And Fund Balances</b>	<b>\$60,542,326</b>				

Amounts Expressed in Whole Dollars

	<u>Capital Reserve (1431)</u> <u>(32)</u>	<u>Other Capital Projects</u> <u>Fund</u> <u>(39)</u>	<u>Debt Service</u> <u>(40)</u>	<u>Permanent</u> <u>(90)</u>	<u>Total Governmental</u> <u>Funds</u>
<b>Liabilities And Deferred Inflows Of Resources And Fund Balances</b>					
<b>Liabilities</b>					
0400 Due to Other Funds					8,516,510
0411 Due to Other Governments					
0412 Due to Primary Government					
0413 Due to Component Unit					
0420 Accounts Payable	78,234	895,726			4,094,159
0430 Contracts Payable					
0440 Current Portion of Long-Term Debt					886,406
0450 Short-Term Payables					
0461 Accrued Salaries and Benefits					18,884,663
0462 Payroll Deductions and Withholding					
0480 Unearned Revenues					1,786,246
0490 Other Current Liabilities					1,794,837
<b>Total Liabilities</b>	<b>\$78,234</b>	<b>\$895,726</b>			<b>\$35,962,821</b>
0950 Deferred Inflows of Resources					
<b>Fund Balances</b>					
0810 Nonspendable Fund Balance					1,023,167
0820 Restricted Fund Balance					1,515,917
0830 Committed Fund Balance					2,886,152
0840 Assigned Fund Balance	10,768,160	2,292,842	6,197,202		26,902,516
0850 Unassigned Fund Balance					12,483,917
<b>Total Fund Balances</b>	<b>\$10,768,160</b>	<b>\$2,292,842</b>	<b>\$6,197,202</b>		<b>\$44,811,669</b>
<b>Total Liabilities, Deferred Inflows Of Resources And Fund Balances</b>	<b>\$10,846,394</b>	<b>\$3,188,568</b>	<b>\$6,197,202</b>		<b>\$80,774,490</b>

Amounts Expressed in Whole Dollars	<u>General Fund</u> <u>(10)</u>	<u>Public Purpose Trust</u> <u>(27)</u>	<u>Other Compt Approved</u> <u>(28)</u>	<u>Athletic / Activity</u> <u>(29)</u>	<u>Capital Reserve (690.</u> <u>1850)</u> <u>(31)</u>
<b>Revenues</b>					
6000 Revenue from Local Sources	124,372,242				
7000 Revenue from State Sources	33,024,357				
8000 Revenue from Federal Sources	930,731				
<b>Total Revenues</b>	<b>\$158,327,330</b>				
<b>Expenditures</b>					
1000 Instruction	95,474,678				
2000 Support Services	45,755,832				
3000 Operation of Non-Instructional Services	2,669,213				
4000 Facilities Acquisition, Construction and Improvement Services	38,536				
5110 Debt Service	14,491,886				
5130 Refund of Prior Year Revenues / Receipts	7				
<b>Total Expenditures</b>	<b>\$158,430,152</b>				
<b>Excess (Deficiency) Of Revenues Over Expenditures</b>	<b>(\$102,822)</b>				
<b>Other Financing Sources (Uses)</b>					
9110 Face Value of Bonds Issued					
9120 Proceeds from Refunding of Bonds					
9130 Bond Premiums					
9200 Proceeds from Extended-Term Financing					
9300 Interfund Transfers - IN	3,300,000				
9400 Sale of or Compensation for Loss of Fixed Assets					
9710 Transfers from Component Units					
9720 Transfers from Primary Governments					
9910 Other Financing Sources Not Listed in the 9000 Series					
9990 Insurance Recoveries					
5120 Debt Service – Refunded Bonds					
5150 Bond Discounts					
5200 Interfund Transfers – Out	2,517,882				
5300 Transfers Out to Component Units/Primary Governments					
<b>Total Other Financing Sources (Uses)</b>	<b>\$782,118</b>				

Amounts Expressed in Whole Dollars	<u>Capital Reserve (1431)</u> <u>(32)</u>	<u>Other Capital Projects</u> <u>Fund</u> <u>(39)</u>	<u>Debt Service</u> <u>(40)</u>	<u>Permanent</u> <u>(90)</u>	<u>Total Governmental</u> <u>Funds</u>
<b>Revenues</b>					
6000 Revenue from Local Sources	150,494	140,636	80,972		124,744,344
7000 Revenue from State Sources					33,024,357
8000 Revenue from Federal Sources					930,731
<b>Total Revenues</b>	<b>\$150,494</b>	<b>\$140,636</b>	<b>\$80,972</b>		<b>\$158,699,432</b>
<b>Expenditures</b>					
1000 Instruction					95,474,678
2000 Support Services	2,262,561	2			48,018,395
3000 Operation of Non-Instructional Services					2,669,213
4000 Facilities Acquisition, Construction and Improvement Services	897,783	7,588,929			8,525,248
5110 Debt Service					14,491,886
5130 Refund of Prior Year Revenues / Receipts					7
<b>Total Expenditures</b>	<b>\$3,160,344</b>	<b>\$7,588,931</b>			<b>\$169,179,427</b>
<b>Excess (Deficiency) Of Revenues Over Expenditures</b>	<b>(\$3,009,850)</b>	<b>(\$7,448,295)</b>	<b>\$80,972</b>		<b>(\$10,479,995)</b>
<b>Other Financing Sources (Uses)</b>					
9110 Face Value of Bonds Issued					
9120 Proceeds from Refunding of Bonds					
9130 Bond Premiums					
9200 Proceeds from Extended-Term Financing					
9300 Interfund Transfers - IN	2,517,882				5,817,882
9400 Sale of or Compensation for Loss of Fixed Assets					
9710 Transfers from Component Units					
9720 Transfers from Primary Governments					
9910 Other Financing Sources Not Listed in the 9000 Series					
9990 Insurance Recoveries					
5120 Debt Service – Refunded Bonds					
5150 Bond Discounts					
5200 Interfund Transfers – Out			1,750,000		4,267,882
5300 Transfers Out to Component Units/Primary Governments					
<b>Total Other Financing Sources (Uses)</b>	<b>\$2,517,882</b>		<b>(\$1,750,000)</b>		<b>\$1,550,000</b>

Amounts Expressed in Whole Dollars	<u>General Fund</u> <u>(10)</u>	<u>Public Purpose Trust</u> <u>(27)</u>	<u>Other Compt Approved</u> <u>(28)</u>	<u>Athletic / Activity</u> <u>(29)</u>	<u>Capital Reserve</u> <u>(690.</u> <u>1850)</u> <u>(31)</u>
<b>Special And Extraordinary Items</b>					
9920 Special Items – Gains					
9930 Extraordinary Items – Gains					
5520 Special Items – Losses					
5530 Extraordinary Items – Losses					
<b>Net Change In Fund Balances</b>	<b>\$679,296</b>				
<b>Fund Balance</b>					
0001 Fund Balance - Beginning of Fiscal Year	24,874,172				
<b>Fund Balance - End Of Year</b>	<b>\$25,553,468</b>				

Amounts Expressed in Whole Dollars	<u>Capital Reserve (1431)</u> <u>(32)</u>	<u>Other Capital Projects</u> <u>Fund</u> <u>(39)</u>	<u>Debt Service</u> <u>(40)</u>	<u>Permanent</u> <u>(90)</u>	<u>Total Governmental</u> <u>Funds</u>
<b>Special And Extraordinary Items</b>					
9920 Special Items – Gains					
9930 Extraordinary Items – Gains					
5520 Special Items – Losses					
5530 Extraordinary Items – Losses					
<b>Net Change In Fund Balances</b>	<b>(\$491,968)</b>	<b>(\$7,448,295)</b>	<b>(\$1,669,028)</b>		<b>(\$8,929,995)</b>
<b>Fund Balance</b>					
0001 Fund Balance - Beginning of Fiscal Year	11,260,128	9,741,136	7,866,229		53,741,665
<b>Fund Balance - End Of Year</b>	<b>\$10,768,160</b>	<b>\$2,292,841</b>	<b>\$6,197,201</b>		<b>\$44,811,670</b>

Amounts Expressed in Whole Dollars	<u>Food Service</u> <u>(51)</u>	<u>Child Care</u> <u>Operations</u> <u>(52)</u>	<u>Other Enterprise</u> <u>(58)</u>	<u>TOTAL</u>	<u>Internal Service</u> <u>(60)</u>
<b>Assets And Deferred Outflows Of Resources</b>					
<b>Current Assets</b>					
0100 Cash and Cash Equivalents	1,751,736			1,751,736	
0110 Investments					
0130 Due From Other Funds	328,143			328,143	7,080,517
0141 Due From Other Governments					
0142 State Revenue Receivable	2,757			2,757	
0143 Federal Revenue Receivable	31,029			31,029	
0146 Due from Primary Government					
0147 Due from Component Unit					
0150 Other Receivables					
0170 Inventories	65,171			65,171	
0180 Prepaid Expenses (Expenditures)					
0190 Other Current Assets					
<b>Total Current Assets</b>	<b>\$2,178,836</b>			<b>\$2,178,836</b>	<b>\$7,080,517</b>
<b>Noncurrent Assets</b>					
0211 Land					
0212 Site Improvements (Net)					
0220 Buildings and Building Improvements (Net)					
0230 Machinery, Equipment and Furniture (Net)	164,054			164,054	
0250 Construction in Progress					
0260 Long Term Prepayments					
0290 Other Noncurrent Assets					
<b>Total Noncurrent Assets</b>	<b>\$164,054</b>			<b>\$164,054</b>	
0910 Deferred Outflows of Resources	979,000			979,000	
<b>Total Assets And Deferred Outflows Of Resources</b>	<b>\$3,321,890</b>			<b>\$3,321,890</b>	<b>\$7,080,517</b>

Amounts Expressed in Whole Dollars	<u>Food Service</u> <u>(51)</u>	<u>Child Care</u> <u>Operations</u> <u>(52)</u>	<u>Other Enterprise</u> <u>(58)</u>	<u>TOTAL</u>	<u>Internal Service</u> <u>(60)</u>
<b>Liabilities And Deferred Inflows Of Resources And Net Position</b>					
<b>Current Liabilities</b>					
0400 Due to Other Funds	1,644,531			1,644,531	
0411 Due to Other Governments					
0413 Due to Component Unit					
0420 Accounts Payable	6,337			6,337	
0430 Contracts Payable					
0440 Current Portion of Long-Term Debt					
0450 Short-Term Payables					
0461 Accrued Salaries and Benefits	73,863			73,863	
0462 Payroll Deductions and Withholding					
0480 Unearned Revenues	114,088			114,088	
0490 Other Current Liabilities					
<b>Total Current Liabilities</b>	<b>\$1,838,819</b>			<b>\$1,838,819</b>	
<b>Noncurrent Liabilities</b>					
0510 Bonds Payable					
0520 Extended-Term Financing Agreements Payable					
0530 Lease-Purchase Obligations					
0540 Accumulated Compensated Absences	62,810			62,810	
0550 Authority Lease Obligations					
0560 Other Post-Employment Benefits (OPEB)					
0570 Net Pension Liability					
0599 Other Noncurrent Liabilities	4,337,000			4,337,000	
<b>Total Noncurrent Liabilities</b>	<b>\$4,399,810</b>			<b>\$4,399,810</b>	
<b>Total Liabilities</b>	<b>\$6,238,629</b>			<b>\$6,238,629</b>	
0950 Deferred Inflows of Resources	193,000			193,000	
<b>Net Position</b>					
0791 Net Investment in Capital Assets	261			261	
0008 Restricted Net Position (0792 – 0798)	(3,110,000)			(3,110,000)	
0799 Unrestricted Net Position					7,080,517
<b>Total Net Position</b>	<b>(\$3,109,739)</b>			<b>(\$3,109,739)</b>	<b>\$7,080,517</b>
<b>Total Liabilities And Deferred Inflows Of Resources And Net Position</b>	<b>\$3,321,890</b>			<b>\$3,321,890</b>	<b>\$7,080,517</b>

Amounts Expressed in Whole Dollars	<u>Food Service</u> <u>(51)</u>	<u>Child Care Operations</u> <u>(52)</u>	<u>Other Enterprise</u> <u>(58)</u>	<u>TOTAL</u>	<u>Internal Service</u> <u>(60)</u>
<b>Operating Revenues</b>					
6600 Food Service Revenue	1,886,109			1,886,109	
0071 Charges for Services					
0072 Other Operating Revenue					
<b>Total Operating Revenues</b>	<b>\$1,886,109</b>			<b>\$1,886,109</b>	
<b>Operating Expenses</b>					
100 Personnel Services – Salaries	1,075,485			1,075,485	
200 Personnel Services – Employee Benefits	771,976			771,976	
300 Purchased Professional and Technical Services	11,984			11,984	
400 Purchased Property Services	37,747			37,747	
500 Other Purchased Services	2,804			2,804	
600 Supplies	1,146,417			1,146,417	
740 Depreciation	15,000			15,000	
810 Dues and Fees	3,457			3,457	
890 Miscellaneous Expenditures	(3,571)			(3,571)	
<b>Total Operating Expenses</b>	<b>\$3,061,299</b>			<b>\$3,061,299</b>	
<b>Operating Income (Loss)</b>	<b>(\$1,175,190)</b>			<b>(\$1,175,190)</b>	
<b>Non Operating Revenues (Expenses)</b>					
6500 Earnings on Investments	31,232			31,232	
6920 Contributions and Donations from Private Sources					
6930 Gains or Losses on Sale of Fixed Assets					
6991 Refunds of a Prior Year Expenditure					
7000 Revenue from State Sources	270,362			270,362	
8000 Revenue from Federal Sources	772,243			772,243	
9990 Insurance Recoveries					
820 Claims and Judgments Against the LEA					
830 Interest					
<b>TOTAL Non Operating Revenues (Expenses)</b>	<b>\$1,073,837</b>			<b>\$1,073,837</b>	
<b>Income (Loss) Before Contributions And Transfers</b>	<b>(\$101,353)</b>			<b>(\$101,353)</b>	

Amounts Expressed in Whole Dollars	<u>Food Service</u> <u>(51)</u>	<u>Child Care Operations</u> <u>(52)</u>	<u>Other Enterprise</u> <u>(58)</u>	<u>TOTAL</u>	<u>Internal Service</u> <u>(60)</u>
<b>Contributions, Transfers, and Special and Extraordinary Items</b>					
5200 Interfund Transfers – Out					1,550,000
5300 Transfers Out to Component Units/Primary Governments					
5520 Special Items – Losses					
5530 Extraordinary Items – Losses					
9300 Interfund Transfers - IN					
9500 Capital Contributions					
9700 Transfers IN From Component Units/Primary Governments					
9920 Special Items – Gains					
9930 Extraordinary Items – Gains					
<b>Change In Net Position</b>	<b>(\$101,353)</b>			<b>(\$101,353)</b>	<b>(\$1,550,000)</b>
0002 Net Position - Beginning of Fiscal Year	(3,008,386)			(3,008,386)	8,630,517
0003 Accounting Changes / Residual Equity Transfers					
<b>Net Position - End Of Year</b>	<b>(\$3,109,739)</b>			<b>(\$3,109,739)</b>	<b>\$7,080,517</b>

Amounts Expressed in Whole Dollars	<u>Food Service</u> <u>(51)</u>	<u>Child Care Operations</u> <u>(52)</u>	<u>Other Enterprise</u> <u>(58)</u>	<u>TOTAL</u>	<u>Internal Service(60)</u>
<b>Cash Flows From Operating Activities</b>					
0011 Cash Receipts From Users	1,852,006			1,852,006	
0012 Cash Receipts From Assessments Made to Other Funds					
0013 Cash Receipts From Earnings on Investments					
0014 Cash Receipts From Other Operating Revenue					
0015 Cash Payments To Employees For Services	1,842,656			1,842,656	
0016 Cash Payments For Insurance Claims					
0017 Cash Payments To Suppliers For Goods and Services	948,226			948,226	
0018 Cash Payments For Other Operating Expenses	52,535			52,535	
<b>Net Cash Provided By (Used For) Operating Activities</b>	<b>(\$991,411)</b>			<b>(\$991,411)</b>	
<b>Cash Flows From Non-Capital Financing Activities</b>					
0021 Receipts From Local Sources - 6000					
0022 Receipts From State Sources - 7000	263,807			263,807	
0023 Receipts From Federal Sources -8000	682,100			682,100	
0024 Notes and Loans Received (Repaid)					
0025 Interest Paid on Notes/Loans - 5100-830					
0026 Operating Transfers In (Out)/Residual Equity Trans					
0027 Operating Transfers In (Out) Primary Government / Comp Unit	694,227			694,227	
0028 Receipts From Refund of Prior Year Expenditures - 6991					
0029 Special and Extraordinary Gains (losses)					
0030 Receipts from Insurance Recoveries -9990					
<b>Net Cash Prov By (Used for) Non-Capital Financing Activities</b>	<b>\$1,640,134</b>			<b>\$1,640,134</b>	
<b>Cash Flows From Capital and Related Financing Activities</b>					
0031 Payments For Fac Acq, Const, and Imp - 4000					
0032 Gain / (Loss) on Sale of Fixed Assets - 6930					
0033 Proceeds From Extended Term Financing - 9200					
0034 Principal Paid on Financing Agreements					
0035 Interest Paid on Financing Agreements - 5100-830					
0036 (Inc) Dec in Contributed Capital					
<b>Net Cash Prov By (Used for) Capital and Related Financing Activities</b>					
<b>Cash Flows From Investing Activities</b>					
0041 Earnings on Investments - 6500	31,232			31,232	
0042 Purchase of Inv Securities / Deposits to Inv Pools					
0043 Receipts From Investment Pool Withdrawals					
0044 Proceeds from Sale and Maturity of Inv Securities					

LEA : 123467303 Spring-Ford Area SD

Printed 1/16/2020 3:39:32 PM

0045 Loans Received (Paid)

<b>Net Cash Prov By (Used for) Investing Activities</b>	<b>\$31,232</b>	<b>\$31,232</b>
---	-----------------	-----------------

	<u>Food Service</u> <u>(51)</u>	<u>Child Care Operations</u> <u>(52)</u>	<u>Other Enterprise</u> <u>(58)</u>	<u>TOTAL</u>	<u>Internal Service</u> <u>(60)</u>
<b>Net Increase (Decrease) in Cash Flows</b>	<b>679,955</b>			<b>679,955</b>	
0004 Cash and Cash Equivalents Beginning of Year	1,058,671			1,058,671	
<b>Cash and Cash Equivalents at Year End</b>	<b>\$1,738,626</b>			<b>\$1,738,626</b>	

**Reconciliation of Operating Income (Loss) To Net Cash Provided by (Used For) Operating Activities**

0005 Operating Income (Loss) per REP	(1,175,190)			(1,175,190)	
<b>Adjustments</b>					
0051 Depreciation and Net Amortization	15,000			15,000	
0052 Provision for Uncollectible Accounts					
0053 Other Adjustments	163,417			163,417	
<b>Effect of Changes in Assets, Liabilities, Deferred Outflows and Deferred Inflows</b>					
0054 (Inc) Dec In Accounts Receivable (0120-0150)					
0055 Advances to Other Funds (0160)					
0056 (Inc) Dec in Inventories (0170)	32,167			32,167	
0057 (Inc) Dec in Prepaid Expenses (0180)					
0058 (Inc) Dec in Other Current or Noncurrent Assets					
0064 Deferred Outflows (0910)					
0059 Inc (Dec) in Accounts Payable (0400-0450)	2,493			2,493	
0060 Inc (Dec) in Accrued Salaries/Benefits (0461)	27,624			27,624	
0065 Inc (Dec) in Net Pension Liabilities (0570)					
0066 Inc (Dec) in Other Postemp Benefit Oblig (0560)					
0061 Inc (Dec) in Payroll Deductions/Withholding (0462)					
0062 Inc (Dec) in Unearned Revenue (0480)	(34,103)			(34,103)	
0063 Inc (Dec) in Other Current or Noncurrent Liabilities	(22,818)			(22,818)	
0067 Deferred Inflows (0950)					
<b>Total Adjustments</b>	<b>\$183,780</b>			<b>\$183,780</b>	
<b>Cash Provided By (Used for) Total</b>	<b>(\$991,410)</b>			<b>(\$991,410)</b>	

COMBINED STATEMENT OF CASH FLOWS  
SCHEDULE OF NONCASH INVESTING, CAPITAL, AND FINANCING ACTIVITIES

Explanation of Transaction and Balance Sheet Effect	Amount
<b>Total</b>	

	<u>Revenue Reported In Current Year</u>	<u>Current Year Tax Accrual</u>	<u>Prior Year Tax Accrual</u>	<u>Taxes Collected In Current Year</u>
<b><u>Revenue from Local Sources</u></b>				
6111 Current Real Estate Taxes	101,359,075.60			101,359,075.60
6112 Interim Real Estate Taxes	1,249,762.47			1,249,762.47
6113 Public Utility Realty Taxes	117,997.60			117,997.60
6114 Payments in Lieu of Current Taxes - State / Local	1,713,371.57			1,713,371.57
6143 Current Act 511 Local Services Taxes	198,806.50			198,806.50
6151 Current Act 511 Earned Income Taxes	10,903,479.47			10,903,479.47
6153 Current Act 511 Real Estate Transfer Taxes	2,232,251.92			2,232,251.92
6411 Delinquent Real Estate Taxes	2,079,739.52			2,079,739.52
6420 Delinquent Per Capita Taxes, Section 679	8,327.49			8,327.49
6500 Earnings on Investments	1,638,546.35			
6700 Revenues from LEA Activities	312,572.51			
6810 Revenue from Local Governmental Units	62,500.00			
6831 Federal Revenue Received from Other Pennsylvania Public LEAs	23,952.62			
6832 Federal IDEA Revenue Received as Pass Through	1,513,248.78			
6910 Rentals	198,701.82			
6920 Contributions and Donations from Private Sources	1,360.00			
6942 Summer School Tuition	3,476.00			
6991 Refunds of a Prior Year Expenditure	3,305.98			
6992 Energy Efficiency Revenues and Incentives	636,842.50			
6999 Other Revenues Not Specified Above	114,923.69			
<b>TOTAL Revenue from Local Sources</b>	<b>\$124,372,242.39</b>			<b>\$119,862,812.14</b>

**Revenue Reported  
In Current Year**

**Revenue from State Sources**

7110 Basic Education Funding	9,788,412.05		
7160 Tuition for Orphans Subsidy	75,353.30		
7271 Special Education funds for School-Aged Pupils	2,606,580.39		
7299 Program Revenues Not Listed Previously in the 7200 Series	1,308.52		
7311 Pupil Transportation Subsidy	1,804,054.11		
7312 Nonpublic and Charter School Pupil Transportation Subsidy	392,700.00		
7320 Rental and Sinking Fund Payments / Building Reimbursement Subsidy	1,076,185.25		
7330 Health Services (Medical, Dental, Nurse, Act 25)	167,601.12		
7340 State Property Tax Reduction Allocation	2,480,937.18		
7369 Other Safe School Grants	25,000.00		
7505 Ready to Learn Block Grant	442,498.00		
7810 State Share of Social Security and Medicare Taxes	2,645,156.45		
7820 State Share of Retirement Contributions	11,518,570.89		
<b>TOTAL Revenue from State Sources</b>	<b>\$33,024,357.26</b>		

**Revenue Reported  
In Current Year**

**Revenue from Federal Sources**

8514 NCLB, Title I - Improving the Academic Achievement of the Disadvantaged	355,181.18		
8515 NCLB, Title II - Preparing, Training and Recruiting High Quality Teachers and Principals	127,085.86		
8517 NCLB, Title IV - 21St Century Schools	39,441.22		
8810 School-Based Access Medicaid Reimbursement Program (SBAP) Reimbursements (Access)	350,000.00		
8820 Medical Assistance Reimbursement for Administrative Claiming (Quarterly) Program	59,022.96		
<b>TOTAL Revenue from Federal Sources</b>	<b>\$930,731.22</b>		

**Revenue Reported  
In Current Year**

**Other Financing Sources**

9340 Debt Service Fund Transfers	1,750,000.00		
9360 Internal Service Fund Transfers	1,550,000.00		
<b>TOTAL Other Financing Sources</b>	<b>\$3,300,000.00</b>		
<b>TOTAL FROM ALL SOURCES</b>	<b>\$161,627,330.87</b>		<b>\$119,862,812.14</b>

Revenue from Local Sources	124,372,242.39
Revenue from State Sources	33,024,357.26
Revenue from Federal Sources	930,731.22
Other Financing Sources	3,300,000.00
<b>TOTAL FROM ALL SOURCES</b>	<b>\$161,627,330.87</b>

General Fund (10)

	<u>Total</u>
<b>1000 Instruction</b>	
<b>100 Personnel Services – Salaries</b>	
100 Personnel Services – Salaries	49,317,534.64
<b>Total Personnel Services – Salaries</b>	<b>\$49,317,534.64</b>
<b>200 Personnel Services – Employee Benefits</b>	
210 Group Insurance – Contracted Provider	40,107.45
220 Social Security Contributions	3,786,382.53
230 PSERS Retirement Contributions	16,910,752.47
250 Unemployment Compensation	2,372.94
260 Workers' Compensation	173,595.22
270 Group Insurance – Self-Insurance	11,008,365.81
280 Other Post-Employment Benefits (OPEB)	1,670.00
291 Other Retirement Plans	157,599.50
<b>Total Personnel Services – Employee Benefits</b>	<b>\$32,080,845.92</b>
<b>300 Purchased Professional and Technical Services</b>	
322 Professional Educational Services – Ius	2,182,478.94
323 Professional Educational Services – Other Educational Agencies	39,001.30
329 Professional Educational Services – Other	1,540,701.57
330 Other Professional Services	677,487.87
<b>Total Purchased Professional and Technical Services</b>	<b>\$4,439,669.68</b>
<b>400 Purchased Property Services</b>	
430 Repairs and Maintenance Services	141,767.49
440 Rentals	256,184.47
<b>Total Purchased Property Services</b>	<b>\$397,951.96</b>
<b>500 Other Purchased Services</b>	
510 Student Transportation Services	28,359.81
530 Communications	2,823.45
550 Printing and Binding	5,823.10
561 Tuition To Other School Districts Within the State	37,294.00
562 Tuition To Pennsylvania Charter Schools	3,008,292.21
563 Tuition To Nonpublic Schools	437,602.18
564 Tuition To Career and Technology Centers	1,873,838.48
567 Tuition To Approved Private Schools (APS) and PA Chartered Schools for the Deaf and Blind	1,545,879.68
568 Tuition To Private Residential Rehabilitative Institutions (PRRI) [In-State] and Detention Centers	873,814.51
569 Tuition – Other	86,838.26
580 Travel	6,009.21
594 IU Payment By Withholding for Institutionalized Children's Programs – Special Classes	1,177.19
597 Direct Payments To Intermediate Units for Institutionalized Childrens' Program	652.50
<b>Total Other Purchased Services</b>	<b>\$7,908,404.58</b>
<b>600 Supplies</b>	
610 General Supplies	643,419.25
630 Food	1,090.15
640 Books and Periodicals	333,929.70
650 Supplies & Fees – Technology Related	244,108.27

**General Fund (10)**

		<u>Total</u>
<b>1000 Instruction</b>		
<b>Total Supplies</b>		<b>\$1,222,547.37</b>
<b>700 Property</b>		
752	Capital Equipment – Original and Additional	43,754.30
756	Capitalized Technology Equipment – Original	9,458.50
<b>Total Property</b>		<b>\$53,212.80</b>
<b>800 Other Objects</b>		
810	Dues and Fees	40,263.00
890	Miscellaneous Expenditures	14,248.26
<b>Total Other Objects</b>		<b>\$54,511.26</b>
<b>Total 1000 Instruction</b>		<b>\$95,474,678.21</b>

**General Fund (10)**

**1100 Regular Programs – Elementary / Secondary**

	<u>Elementary</u>	<u>Secondary</u>	<u>Federal</u>	<u>Total</u>
<b>100 Personnel Services – Salaries</b>				
100 Personnel Services – Salaries	17,885,133.38	16,502,108.24	256,516.47	34,643,758.09
<b>Total Personnel Services – Salaries</b>	<b>\$17,885,133.38</b>	<b>\$16,502,108.24</b>	<b>\$256,516.47</b>	<b>\$34,643,758.09</b>
<b>200 Personnel Services – Employee Benefits</b>				
210 Group Insurance – Contracted Provider	12,722.24	11,879.03	207.46	24,808.73
220 Social Security Contributions	1,386,337.59	1,271,010.56	9,344.99	2,666,693.14
230 PSERS Retirement Contributions	6,187,762.16	5,663,085.83	42,876.83	11,893,724.82
250 Unemployment Compensation	768.25	736.95	13.91	1,519.11
260 Workers' Compensation	64,033.00	59,164.65	924.33	124,121.98
270 Group Insurance – Self-Insurance	3,450,319.14	3,073,065.62	74,568.52	6,597,953.28
291 Other Retirement Plans	48,862.50	84,412.50		133,275.00
<b>Total Personnel Services – Employee Benefits</b>	<b>\$11,150,804.88</b>	<b>\$10,163,355.14</b>	<b>\$127,936.04</b>	<b>\$21,442,096.06</b>
<b>300 Purchased Professional and Technical Services</b>				
329 Professional Educational Services – Other	668,184.54	508,747.62	26,454.50	1,203,386.66
330 Other Professional Services		1,080.00		1,080.00
<b>Total Purchased Professional and Technical Services</b>	<b>\$668,184.54</b>	<b>\$509,827.62</b>	<b>\$26,454.50</b>	<b>\$1,204,466.66</b>
<b>400 Purchased Property Services</b>				
430 Repairs and Maintenance Services	66,614.83	74,817.66		141,432.49
440 Rentals	125,289.60	130,894.87		256,184.47
<b>Total Purchased Property Services</b>	<b>\$191,904.43</b>	<b>\$205,712.53</b>		<b>\$397,616.96</b>
<b>500 Other Purchased Services</b>				
510 Student Transportation Services	3,089.62	2,544.62	926.09	6,560.33
530 Communications	1,297.20	1,526.25		2,823.45
550 Printing and Binding	3,240.63	2,571.49		5,812.12
562 Tuition To Pennsylvania Charter Schools	681,689.73	1,217,342.75		1,899,032.48
563 Tuition To Nonpublic Schools		14,281.92		14,281.92
564 Tuition To Career and Technology Centers		29,959.48		29,959.48
568 Tuition To Private Residential Rehabilitative Institutions (PRRI) [In-State] and Detention Centers	2,070.13	56,269.21		58,339.34
580 Travel	712.17	1,028.77		1,740.94
<b>Total Other Purchased Services</b>	<b>\$692,099.48</b>	<b>\$1,325,524.49</b>	<b>\$926.09</b>	<b>\$2,018,550.06</b>
<b>600 Supplies</b>				
610 General Supplies	401,796.46	205,143.73	537.73	607,477.92
630 Food	593.70			593.70
640 Books and Periodicals	152,204.14	155,285.76	5,409.53	312,899.43
650 Supplies & Fees – Technology Related	85,458.39	125,669.05	2,610.00	213,737.44
<b>Total Supplies</b>	<b>\$640,052.69</b>	<b>\$486,098.54</b>	<b>\$8,557.26</b>	<b>\$1,134,708.49</b>
<b>700 Property</b>				
752 Capital Equipment – Original and Additional	22,752.24	21,002.06		43,754.30
756 Capitalized Technology Equipment – Original			9,458.50	9,458.50
<b>Total Property</b>	<b>\$22,752.24</b>	<b>\$21,002.06</b>	<b>\$9,458.50</b>	<b>\$53,212.80</b>
<b>800 Other Objects</b>				

LEA : 123467303 Spring-Ford Area SD

Printed 1/16/2020 3:39:40 PM

General Fund (10)

	<u>Elementary</u>	<u>Secondary</u>	<u>Federal</u>	<u>Total</u>
<b>1100 Regular Programs – Elementary / Secondary</b>				
<b>800 Other Objects</b>				
810 Dues and Fees	16,586.90	22,628.54	45.00	39,260.44
890 Miscellaneous Expenditures	5,329.00	4,581.00	1,598.99	11,508.99
<b>Total Other Objects</b>	<b>\$21,915.90</b>	<b>\$27,209.54</b>	<b>\$1,643.99</b>	<b>\$50,769.43</b>
<b>Total 1100 Regular Programs – Elementary / Secondary</b>	<b>\$31,272,847.54</b>	<b>\$29,240,838.16</b>	<b>\$431,492.85</b>	<b>\$60,945,178.55</b>

**General Fund (10)**

**1110 Regular Programs**

	<u>Elementary</u>	<u>Secondary</u>	<u>Federal</u>	<u>Total</u>
<b>100 Personnel Services – Salaries</b>				
100 Personnel Services – Salaries	17,885,133.38	16,502,108.24	2,500.00	34,389,741.62
<b>Total Personnel Services – Salaries</b>	<b>\$17,885,133.38</b>	<b>\$16,502,108.24</b>	<b>\$2,500.00</b>	<b>\$34,389,741.62</b>
<b>200 Personnel Services – Employee Benefits</b>				
210 Group Insurance – Contracted Provider	12,722.24	11,879.03		24,601.27
220 Social Security Contributions	1,386,337.59	1,271,010.56	94.95	2,657,443.10
230 PSERS Retirement Contributions	6,187,762.16	5,663,085.83	417.88	11,851,265.87
250 Unemployment Compensation	768.25	736.95		1,505.20
260 Workers' Compensation	64,033.00	59,164.65		123,197.65
270 Group Insurance – Self-Insurance	3,450,319.14	3,073,065.62		6,523,384.76
291 Other Retirement Plans	48,862.50	84,412.50		133,275.00
<b>Total Personnel Services – Employee Benefits</b>	<b>\$11,150,804.88</b>	<b>\$10,163,355.14</b>	<b>\$512.83</b>	<b>\$21,314,672.85</b>
<b>300 Purchased Professional and Technical Services</b>				
329 Professional Educational Services – Other	668,184.54	508,747.62		1,176,932.16
330 Other Professional Services		1,080.00		1,080.00
<b>Total Purchased Professional and Technical Services</b>	<b>\$668,184.54</b>	<b>\$509,827.62</b>		<b>\$1,178,012.16</b>
<b>400 Purchased Property Services</b>				
430 Repairs and Maintenance Services	66,614.83	74,817.66		141,432.49
440 Rentals	125,289.60	130,894.87		256,184.47
<b>Total Purchased Property Services</b>	<b>\$191,904.43</b>	<b>\$205,712.53</b>		<b>\$397,616.96</b>
<b>500 Other Purchased Services</b>				
510 Student Transportation Services	3,089.62	2,544.62	926.09	6,560.33
530 Communications	1,297.20	1,526.25		2,823.45
550 Printing and Binding	3,240.63	2,571.49		5,812.12
562 Tuition To Pennsylvania Charter Schools	681,689.73	1,217,342.75		1,899,032.48
563 Tuition To Nonpublic Schools		14,281.92		14,281.92
564 Tuition To Career and Technology Centers		29,959.48		29,959.48
568 Tuition To Private Residential Rehabilitative Institutions (PRRI) [In-State] and Detention Centers	2,070.13	56,269.21		58,339.34
580 Travel	712.17	1,028.77		1,740.94
<b>Total Other Purchased Services</b>	<b>\$692,099.48</b>	<b>\$1,325,524.49</b>	<b>\$926.09</b>	<b>\$2,018,550.06</b>
<b>600 Supplies</b>				
610 General Supplies	401,796.46	205,143.73	537.73	607,477.92
630 Food	593.70			593.70
640 Books and Periodicals	152,204.14	155,285.76	5,409.53	312,899.43
650 Supplies & Fees – Technology Related	85,458.39	125,669.05	2,610.00	213,737.44
<b>Total Supplies</b>	<b>\$640,052.69</b>	<b>\$486,098.54</b>	<b>\$8,557.26</b>	<b>\$1,134,708.49</b>
<b>700 Property</b>				
752 Capital Equipment – Original and Additional	22,752.24	21,002.06		43,754.30
756 Capitalized Technology Equipment – Original			9,458.50	9,458.50
<b>Total Property</b>	<b>\$22,752.24</b>	<b>\$21,002.06</b>	<b>\$9,458.50</b>	<b>\$53,212.80</b>
<b>800 Other Objects</b>				

General Fund (10)

1110 Regular Programs

800 Other Objects

810 Dues and Fees

890 Miscellaneous Expenditures

Total Other Objects

Total 1110 Regular Programs

Elementary

Secondary

Federal

Total

16,586.90

22,628.54

45.00

39,260.44

5,329.00

4,581.00

1,598.99

11,508.99

\$21,915.90

\$27,209.54

\$1,643.99

\$50,769.43

\$31,272,847.54

\$29,240,838.16

\$23,598.67

\$60,537,284.37

**General Fund (10)**

	<u>Elementary</u>	<u>Secondary</u>	<u>Federal</u>	<u>Total</u>
<b>1190 Federally-Funded Regular Programs</b>				
<b>100 Personnel Services – Salaries</b>				
100 Personnel Services – Salaries			254,016.47	254,016.47
<b>Total Personnel Services – Salaries</b>			<b>\$254,016.47</b>	<b>\$254,016.47</b>
<b>200 Personnel Services – Employee Benefits</b>				
210 Group Insurance – Contracted Provider			207.46	207.46
220 Social Security Contributions			9,250.04	9,250.04
230 PSERS Retirement Contributions			42,458.95	42,458.95
250 Unemployment Compensation			13.91	13.91
260 Workers' Compensation			924.33	924.33
270 Group Insurance – Self-Insurance			74,568.52	74,568.52
<b>Total Personnel Services – Employee Benefits</b>			<b>\$127,423.21</b>	<b>\$127,423.21</b>
<b>300 Purchased Professional and Technical Services</b>				
329 Professional Educational Services – Other			26,454.50	26,454.50
<b>Total Purchased Professional and Technical Services</b>			<b>\$26,454.50</b>	<b>\$26,454.50</b>
<b>Total 1190 Federally-Funded Regular Programs</b>			<b>\$407,894.18</b>	<b>\$407,894.18</b>

**General Fund (10)**

**1200 Special Programs – Elementary / Secondary**

	<u>Elementary</u>	<u>Secondary</u>	<u>Federal</u>	<u>Total</u>
<b>100 Personnel Services – Salaries</b>				
100 Personnel Services – Salaries	8,273,387.62	6,040,432.76	343,196.17	14,657,016.55
<b>Total Personnel Services – Salaries</b>	<b>\$8,273,387.62</b>	<b>\$6,040,432.76</b>	<b>\$343,196.17</b>	<b>\$14,657,016.55</b>
<b>200 Personnel Services – Employee Benefits</b>				
210 Group Insurance – Contracted Provider	9,257.69	5,989.33	51.70	15,298.72
220 Social Security Contributions	637,821.16	467,915.60	12,707.56	1,118,444.32
230 PSERS Retirement Contributions	2,851,419.80	2,103,274.25	57,281.32	5,011,975.37
250 Unemployment Compensation	625.95	227.67	0.21	853.83
260 Workers' Compensation	28,385.19	21,000.82		49,386.01
270 Group Insurance – Self-Insurance	2,588,747.11	1,716,631.12	105,034.30	4,410,412.53
280 Other Post-Employment Benefits (OPEB)	868.40	801.60		1,670.00
291 Other Retirement Plans	18,562.50	5,762.00		24,324.50
<b>Total Personnel Services – Employee Benefits</b>	<b>\$6,135,687.80</b>	<b>\$4,321,602.39</b>	<b>\$175,075.09</b>	<b>\$10,632,365.28</b>
<b>300 Purchased Professional and Technical Services</b>				
322 Professional Educational Services – Ius	545,489.33	636,458.55	994,513.46	2,176,461.34
323 Professional Educational Services – Other Educational Agencies		14,284.92		14,284.92
329 Professional Educational Services – Other	229,189.77	107,661.08	464.06	337,314.91
330 Other Professional Services	431,733.69	134,325.14	110,349.04	676,407.87
<b>Total Purchased Professional and Technical Services</b>	<b>\$1,206,412.79</b>	<b>\$892,729.69</b>	<b>\$1,105,326.56</b>	<b>\$3,204,469.04</b>
<b>400 Purchased Property Services</b>				
430 Repairs and Maintenance Services	276.00	59.00		335.00
<b>Total Purchased Property Services</b>	<b>\$276.00</b>	<b>\$59.00</b>		<b>\$335.00</b>
<b>500 Other Purchased Services</b>				
510 Student Transportation Services	2,026.86	4,316.97	15,455.65	21,799.48
550 Printing and Binding		10.98		10.98
561 Tuition To Other School Districts Within the State	4,352.25	32,941.75		37,294.00
562 Tuition To Pennsylvania Charter Schools	517,005.54	592,254.19		1,109,259.73
563 Tuition To Nonpublic Schools	172,909.26	250,411.00		423,320.26
567 Tuition To Approved Private Schools (APS) and PA Chartered Schools for the Deaf and Blind	612,134.10	933,745.58		1,545,879.68
568 Tuition To Private Residential Rehabilitative Institutions (PRRI) [In-State] and Detention Centers	260,264.64	553,940.53		814,205.17
569 Tuition – Other	48,620.00	38,218.26		86,838.26
580 Travel	1,842.04	2,426.23		4,268.27
594 IU Payment By Withholding for Institutionalized Children's Programs – Special Classes		1,177.19		1,177.19
<b>Total Other Purchased Services</b>	<b>\$1,619,154.69</b>	<b>\$2,409,442.68</b>	<b>\$15,455.65</b>	<b>\$4,044,053.02</b>
<b>600 Supplies</b>				
610 General Supplies	21,685.03	10,939.20	3,317.10	35,941.33
630 Food		496.45		496.45
640 Books and Periodicals	97.45	174.90	20,757.92	21,030.27
650 Supplies & Fees – Technology Related	6,083.49	6,769.71	17,517.63	30,370.83
<b>Total Supplies</b>	<b>\$27,865.97</b>	<b>\$18,380.26</b>	<b>\$41,592.65</b>	<b>\$87,838.88</b>
<b>800 Other Objects</b>				
810 Dues and Fees	150.00	365.35	487.21	1,002.56

General Fund (10)

1200 Special Programs – Elementary / Secondary

800 Other Objects

890 Miscellaneous Expenditures

Total Other Objects

Total 1200 Special Programs – Elementary / Secondary

Elementary

Secondary

Federal

Total

647.90

1,099.03

992.34

2,739.27

\$797.90

\$1,464.38

\$1,479.55

\$3,741.83

\$17,263,582.77

\$13,684,111.16

\$1,682,125.67

\$32,629,819.60

**General Fund (10)**

**1210 Life Skills Support**

	<u>Elementary</u>	<u>Secondary</u>	<u>Federal</u>	<u>Total</u>
<b>100 Personnel Services – Salaries</b>				
100 Personnel Services – Salaries	(207.64)	129,963.44		129,755.80
<b>Total Personnel Services – Salaries</b>	<b>(\$207.64)</b>	<b>\$129,963.44</b>		<b>\$129,755.80</b>
<b>200 Personnel Services – Employee Benefits</b>				
210 Group Insurance – Contracted Provider		192.70		192.70
220 Social Security Contributions	(15.56)	10,251.40		10,235.84
230 PSERS Retirement Contributions	(67.63)	45,954.99		45,887.36
250 Unemployment Compensation		10.43		10.43
260 Workers' Compensation		1,228.17		1,228.17
270 Group Insurance – Self-Insurance		57,696.83		57,696.83
<b>Total Personnel Services – Employee Benefits</b>	<b>(\$83.19)</b>	<b>\$115,334.52</b>		<b>\$115,251.33</b>
<b>300 Purchased Professional and Technical Services</b>				
322 Professional Educational Services – Ius			94,874.00	94,874.00
329 Professional Educational Services – Other		2,275.16		2,275.16
330 Other Professional Services		40,205.00	3,075.00	43,280.00
<b>Total Purchased Professional and Technical Services</b>		<b>\$42,480.16</b>	<b>\$97,949.00</b>	<b>\$140,429.16</b>
<b>500 Other Purchased Services</b>				
510 Student Transportation Services			463.37	463.37
567 Tuition To Approved Private Schools (APS) and PA Chartered Schools for the Deaf and Blind		74,512.72		74,512.72
580 Travel		61.36		61.36
<b>Total Other Purchased Services</b>		<b>\$74,574.08</b>	<b>\$463.37</b>	<b>\$75,037.45</b>
<b>600 Supplies</b>				
610 General Supplies		917.70		917.70
650 Supplies & Fees – Technology Related	249.99			249.99
<b>Total Supplies</b>	<b>\$249.99</b>	<b>\$917.70</b>		<b>\$1,167.69</b>
<b>800 Other Objects</b>				
810 Dues and Fees		19.00	230.80	249.80
<b>Total Other Objects</b>		<b>\$19.00</b>	<b>\$230.80</b>	<b>\$249.80</b>
<b>Total 1210 Life Skills Support</b>	<b>(\$40.84)</b>	<b>\$363,288.90</b>	<b>\$98,643.17</b>	<b>\$461,891.23</b>

**General Fund (10)**

	<u>Elementary</u>	<u>Secondary</u>	<u>Federal</u>	<u>Total</u>
<b>1220 Sensory Support</b>				
<b>100 Personnel Services – Salaries</b>				
100 Personnel Services – Salaries	831,962.40	122,633.58		954,595.98
<b>Total Personnel Services – Salaries</b>	<b>\$831,962.40</b>	<b>\$122,633.58</b>		<b>\$954,595.98</b>
<b>200 Personnel Services – Employee Benefits</b>				
210 Group Insurance – Contracted Provider	439.45	86.95		526.40
220 Social Security Contributions	63,942.76	9,436.17		73,378.93
230 PSERS Retirement Contributions	285,194.54	41,354.19		326,548.73
250 Unemployment Compensation	38.25	6.96		45.21
260 Workers' Compensation	2,963.84	542.16		3,506.00
270 Group Insurance – Self-Insurance	155,178.81	21,200.95		176,379.76
<b>Total Personnel Services – Employee Benefits</b>	<b>\$507,757.65</b>	<b>\$72,627.38</b>		<b>\$580,385.03</b>
<b>300 Purchased Professional and Technical Services</b>				
322 Professional Educational Services – Ius	291,887.64	14,002.60	300,000.00	605,890.24
329 Professional Educational Services – Other		270.30		270.30
330 Other Professional Services	26,303.46	5,392.61		31,696.07
<b>Total Purchased Professional and Technical Services</b>	<b>\$318,191.10</b>	<b>\$19,665.51</b>	<b>\$300,000.00</b>	<b>\$637,856.61</b>
<b>500 Other Purchased Services</b>				
561 Tuition To Other School Districts Within the State	4,352.25			4,352.25
567 Tuition To Approved Private Schools (APS) and PA Chartered Schools for the Deaf and Blind	5,500.00			5,500.00
580 Travel	695.80			695.80
<b>Total Other Purchased Services</b>	<b>\$10,548.05</b>			<b>\$10,548.05</b>
<b>600 Supplies</b>				
610 General Supplies	3,240.54	2,346.04	239.64	5,826.22
650 Supplies & Fees – Technology Related			55.80	55.80
<b>Total Supplies</b>	<b>\$3,240.54</b>	<b>\$2,346.04</b>	<b>\$295.44</b>	<b>\$5,882.02</b>
<b>Total 1220 Sensory Support</b>	<b>\$1,671,699.74</b>	<b>\$217,272.51</b>	<b>\$300,295.44</b>	<b>\$2,189,267.69</b>

**General Fund (10)**

**1230 Emotional Support**

	<u>Elementary</u>	<u>Secondary</u>	<u>Federal</u>	<u>Total</u>
<b>100 Personnel Services – Salaries</b>				
100 Personnel Services – Salaries	2,704,809.47	1,296,231.24	158,159.21	4,159,199.92
<b>Total Personnel Services – Salaries</b>	<b>\$2,704,809.47</b>	<b>\$1,296,231.24</b>	<b>\$158,159.21</b>	<b>\$4,159,199.92</b>
<b>200 Personnel Services – Employee Benefits</b>				
210 Group Insurance – Contracted Provider	3,775.23	1,394.77		5,170.00
220 Social Security Contributions	210,645.65	100,387.02	5,859.99	316,892.66
230 PSERS Retirement Contributions	939,622.47	454,160.35	26,352.62	1,420,135.44
250 Unemployment Compensation	71.33	43.41	0.21	114.95
260 Workers' Compensation	8,433.48	4,434.05		12,867.53
270 Group Insurance – Self-Insurance	1,013,710.88	411,322.52	80,199.08	1,505,232.48
291 Other Retirement Plans		2,387.00		2,387.00
<b>Total Personnel Services – Employee Benefits</b>	<b>\$2,176,259.04</b>	<b>\$974,129.12</b>	<b>\$112,411.90</b>	<b>\$3,262,800.06</b>
<b>300 Purchased Professional and Technical Services</b>				
322 Professional Educational Services – Ius	83,384.24	239,462.67	303,777.84	626,624.75
323 Professional Educational Services – Other Educational Agencies		14,284.92		14,284.92
329 Professional Educational Services – Other	52,808.29	18,838.12	464.06	72,110.47
330 Other Professional Services	371,430.24	43,803.25	13,427.26	428,660.75
<b>Total Purchased Professional and Technical Services</b>	<b>\$507,622.77</b>	<b>\$316,388.96</b>	<b>\$317,669.16</b>	<b>\$1,141,680.89</b>
<b>400 Purchased Property Services</b>				
430 Repairs and Maintenance Services	118.00			118.00
<b>Total Purchased Property Services</b>	<b>\$118.00</b>			<b>\$118.00</b>
<b>500 Other Purchased Services</b>				
510 Student Transportation Services	647.57	427.17	4,097.90	5,172.64
550 Printing and Binding		10.98		10.98
561 Tuition To Other School Districts Within the State		29,824.72		29,824.72
563 Tuition To Nonpublic Schools	172,909.26	207,291.00		380,200.26
567 Tuition To Approved Private Schools (APS) and PA Chartered Schools for the Deaf and Blind	323,327.00	256,155.25		579,482.25
568 Tuition To Private Residential Rehabilitative Institutions (PRRI) [In-State] and Detention Centers	260,264.64	443,470.33		703,734.97
569 Tuition – Other	48,620.00			48,620.00
580 Travel	884.57	427.07		1,311.64
<b>Total Other Purchased Services</b>	<b>\$806,653.04</b>	<b>\$937,606.52</b>	<b>\$4,097.90</b>	<b>\$1,748,357.46</b>
<b>600 Supplies</b>				
610 General Supplies	15,423.89	1,200.46	613.42	17,237.77
640 Books and Periodicals	97.45	174.90	8,995.43	9,267.78
650 Supplies & Fees – Technology Related	2,733.91	204.44	1,712.07	4,650.42
<b>Total Supplies</b>	<b>\$18,255.25</b>	<b>\$1,579.80</b>	<b>\$11,320.92</b>	<b>\$31,155.97</b>
<b>800 Other Objects</b>				
810 Dues and Fees	150.00	60.00	56.00	266.00
890 Miscellaneous Expenditures	575.40	56.00	659.50	1,290.90
<b>Total Other Objects</b>	<b>\$725.40</b>	<b>\$116.00</b>	<b>\$715.50</b>	<b>\$1,556.90</b>
<b>Total 1230 Emotional Support</b>	<b>\$6,214,442.97</b>	<b>\$3,526,051.64</b>	<b>\$604,374.59</b>	<b>\$10,344,869.20</b>

**General Fund (10)**

**1240 Academic Support**

	<u>Elementary</u>	<u>Secondary</u>	<u>Federal</u>	<u>Total</u>
<b>100 Personnel Services – Salaries</b>				
100 Personnel Services – Salaries	4,736,207.63	4,438,759.18	185,036.96	9,360,003.77
<b>Total Personnel Services – Salaries</b>	<b>\$4,736,207.63</b>	<b>\$4,438,759.18</b>	<b>\$185,036.96</b>	<b>\$9,360,003.77</b>
<b>200 Personnel Services – Employee Benefits</b>				
210 Group Insurance – Contracted Provider	5,043.01	4,258.51	51.70	9,353.22
220 Social Security Contributions	363,201.20	343,826.54	6,847.57	713,875.31
230 PSERS Retirement Contributions	1,626,459.65	1,544,143.45	30,928.70	3,201,531.80
250 Unemployment Compensation	516.37	166.87		683.24
260 Workers' Compensation	16,987.87	14,796.44		31,784.31
270 Group Insurance – Self-Insurance	1,419,857.42	1,216,638.11	24,835.22	2,661,330.75
280 Other Post-Employment Benefits (OPEB)	868.40	801.60		1,670.00
291 Other Retirement Plans	18,562.50	3,375.00		21,937.50
<b>Total Personnel Services – Employee Benefits</b>	<b>\$3,451,496.42</b>	<b>\$3,128,006.52</b>	<b>\$62,663.19</b>	<b>\$6,642,166.13</b>
<b>300 Purchased Professional and Technical Services</b>				
322 Professional Educational Services – Ius	4,978.00	57,016.41	71,040.88	133,035.29
329 Professional Educational Services – Other	176,381.48	86,277.50		262,658.98
330 Other Professional Services	(9,330.00)	5,364.24	93,846.78	89,881.02
<b>Total Purchased Professional and Technical Services</b>	<b>\$172,029.48</b>	<b>\$148,658.15</b>	<b>\$164,887.66</b>	<b>\$485,575.29</b>
<b>400 Purchased Property Services</b>				
430 Repairs and Maintenance Services	158.00			158.00
<b>Total Purchased Property Services</b>	<b>\$158.00</b>			<b>\$158.00</b>
<b>500 Other Purchased Services</b>				
510 Student Transportation Services	1,379.29	3,889.80	10,894.38	16,163.47
561 Tuition To Other School Districts Within the State		3,117.03		3,117.03
563 Tuition To Nonpublic Schools		43,120.00		43,120.00
567 Tuition To Approved Private Schools (APS) and PA Chartered Schools for the Deaf and Blind	(33,924.00)			(33,924.00)
568 Tuition To Private Residential Rehabilitative Institutions (PRRI) [In-State] and Detention Centers		110,470.20		110,470.20
569 Tuition – Other		38,218.26		38,218.26
580 Travel	261.67	1,937.80		2,199.47
<b>Total Other Purchased Services</b>	<b>(\$32,283.04)</b>	<b>\$200,753.09</b>	<b>\$10,894.38</b>	<b>\$179,364.43</b>
<b>600 Supplies</b>				
610 General Supplies	1,828.12	1,871.19	2,464.04	6,163.35
630 Food		496.45		496.45
640 Books and Periodicals			11,705.10	11,705.10
650 Supplies & Fees – Technology Related	3,099.59	1,166.27	11,990.34	16,256.20
<b>Total Supplies</b>	<b>\$4,927.71</b>	<b>\$3,533.91</b>	<b>\$26,159.48</b>	<b>\$34,621.10</b>
<b>800 Other Objects</b>				
810 Dues and Fees		257.85	200.41	458.26
890 Miscellaneous Expenditures	72.50	1,043.03	332.84	1,448.37
<b>Total Other Objects</b>	<b>\$72.50</b>	<b>\$1,300.88</b>	<b>\$533.25</b>	<b>\$1,906.63</b>
<b>Total 1240 Academic Support</b>	<b>\$8,332,608.70</b>	<b>\$7,921,011.73</b>	<b>\$450,174.92</b>	<b>\$16,703,795.35</b>

**General Fund (10)**

**1241 Learning Support – Public**

	<u>Elementary</u>	<u>Secondary</u>	<u>Federal</u>	<u>Total</u>
<b>100 Personnel Services – Salaries</b>				
100 Personnel Services – Salaries	4,314,709.17	4,010,340.26	185,036.96	8,510,086.39
<b>Total Personnel Services – Salaries</b>	<b>\$4,314,709.17</b>	<b>\$4,010,340.26</b>	<b>\$185,036.96</b>	<b>\$8,510,086.39</b>
<b>200 Personnel Services – Employee Benefits</b>				
210 Group Insurance – Contracted Provider	4,763.36	4,016.42	51.70	8,831.48
220 Social Security Contributions	331,505.26	311,311.38	6,847.57	649,664.21
230 PSERS Retirement Contributions	1,482,594.43	1,397,376.63	30,928.70	2,910,899.76
250 Unemployment Compensation	139.05	152.95		292.00
260 Workers' Compensation	15,773.47	13,510.83		29,284.30
270 Group Insurance – Self-Insurance	1,327,757.43	1,136,218.01	24,835.22	2,488,810.66
280 Other Post-Employment Benefits (OPEB)	868.40	801.60		1,670.00
291 Other Retirement Plans	6,862.50	3,375.00		10,237.50
<b>Total Personnel Services – Employee Benefits</b>	<b>\$3,170,263.90</b>	<b>\$2,866,762.82</b>	<b>\$62,663.19</b>	<b>\$6,099,689.91</b>
<b>300 Purchased Professional and Technical Services</b>				
322 Professional Educational Services – Ius	4,978.00	57,016.41	71,040.88	133,035.29
329 Professional Educational Services – Other	175,108.28	84,175.70		259,283.98
330 Other Professional Services	(9,330.00)	5,364.24	93,846.78	89,881.02
<b>Total Purchased Professional and Technical Services</b>	<b>\$170,756.28</b>	<b>\$146,556.35</b>	<b>\$164,887.66</b>	<b>\$482,200.29</b>
<b>400 Purchased Property Services</b>				
430 Repairs and Maintenance Services	158.00			158.00
<b>Total Purchased Property Services</b>	<b>\$158.00</b>			<b>\$158.00</b>
<b>500 Other Purchased Services</b>				
510 Student Transportation Services	1,379.29	3,889.80	10,894.38	16,163.47
561 Tuition To Other School Districts Within the State		3,117.03		3,117.03
563 Tuition To Nonpublic Schools		15,748.00		15,748.00
567 Tuition To Approved Private Schools (APS) and PA Chartered Schools for the Deaf and Blind	(33,924.00)			(33,924.00)
568 Tuition To Private Residential Rehabilitative Institutions (PRRI) [In-State] and Detention Centers		110,470.20		110,470.20
569 Tuition – Other		38,218.26		38,218.26
580 Travel	23.71	1,937.80		1,961.51
<b>Total Other Purchased Services</b>	<b>(\$32,521.00)</b>	<b>\$173,381.09</b>	<b>\$10,894.38</b>	<b>\$151,754.47</b>
<b>600 Supplies</b>				
610 General Supplies	1,244.93	1,871.19	2,464.04	5,580.16
630 Food		446.50		446.50
640 Books and Periodicals			10,720.85	10,720.85
650 Supplies & Fees – Technology Related	3,099.59	1,166.27	11,678.34	15,944.20
<b>Total Supplies</b>	<b>\$4,344.52</b>	<b>\$3,483.96</b>	<b>\$24,863.23</b>	<b>\$32,691.71</b>
<b>800 Other Objects</b>				
810 Dues and Fees		32.85	200.41	233.26
890 Miscellaneous Expenditures	72.50	108.03	332.84	513.37
<b>Total Other Objects</b>	<b>\$72.50</b>	<b>\$140.88</b>	<b>\$533.25</b>	<b>\$746.63</b>
<b>Total 1241 Learning Support – Public</b>	<b>\$7,627,783.37</b>	<b>\$7,200,665.36</b>	<b>\$448,878.67</b>	<b>\$15,277,327.40</b>

**General Fund (10)**

	<u>Elementary</u>	<u>Secondary</u>	<u>Federal</u>	<u>Total</u>
<b>1243 Gifted Support</b>				
<b>100 Personnel Services – Salaries</b>				
100 Personnel Services – Salaries	421,498.46	428,418.92		849,917.38
<b>Total Personnel Services – Salaries</b>	<b>\$421,498.46</b>	<b>\$428,418.92</b>		<b>\$849,917.38</b>
<b>200 Personnel Services – Employee Benefits</b>				
210 Group Insurance – Contracted Provider	279.65	242.09		521.74
220 Social Security Contributions	31,695.94	32,515.16		64,211.10
230 PSERS Retirement Contributions	143,865.22	146,766.82		290,632.04
250 Unemployment Compensation	377.32	13.92		391.24
260 Workers' Compensation	1,214.40	1,285.61		2,500.01
270 Group Insurance – Self-Insurance	92,099.99	80,420.10		172,520.09
291 Other Retirement Plans	11,700.00			11,700.00
<b>Total Personnel Services – Employee Benefits</b>	<b>\$281,232.52</b>	<b>\$261,243.70</b>		<b>\$542,476.22</b>
<b>300 Purchased Professional and Technical Services</b>				
329 Professional Educational Services – Other	1,273.20	2,101.80		3,375.00
<b>Total Purchased Professional and Technical Services</b>	<b>\$1,273.20</b>	<b>\$2,101.80</b>		<b>\$3,375.00</b>
<b>500 Other Purchased Services</b>				
563 Tuition To Nonpublic Schools		27,372.00		27,372.00
580 Travel	237.96			237.96
<b>Total Other Purchased Services</b>	<b>\$237.96</b>	<b>\$27,372.00</b>		<b>\$27,609.96</b>
<b>600 Supplies</b>				
610 General Supplies	583.19			583.19
630 Food		49.95		49.95
640 Books and Periodicals			984.25	984.25
650 Supplies & Fees – Technology Related			312.00	312.00
<b>Total Supplies</b>	<b>\$583.19</b>	<b>\$49.95</b>	<b>\$1,296.25</b>	<b>\$1,929.39</b>
<b>800 Other Objects</b>				
810 Dues and Fees		225.00		225.00
890 Miscellaneous Expenditures		935.00		935.00
<b>Total Other Objects</b>		<b>\$1,160.00</b>		<b>\$1,160.00</b>
<b>Total 1243 Gifted Support</b>	<b>\$704,825.33</b>	<b>\$720,346.37</b>	<b>\$1,296.25</b>	<b>\$1,426,467.95</b>

**General Fund (10)**

**1270 Multi-Handicapped Support**

**100 Personnel Services – Salaries**

	<u>Elementary</u>	<u>Secondary</u>	<u>Federal</u>	<u>Total</u>
100 Personnel Services – Salaries		52,229.56		52,229.56
<b>Total Personnel Services – Salaries</b>		<b>\$52,229.56</b>		<b>\$52,229.56</b>

**200 Personnel Services – Employee Benefits**

210 Group Insurance – Contracted Provider		56.40		56.40
220 Social Security Contributions		3,967.37		3,967.37
230 PSERS Retirement Contributions	4.92	17,455.42		17,460.34
270 Group Insurance – Self-Insurance		9,772.71		9,772.71
<b>Total Personnel Services – Employee Benefits</b>	<b>\$4.92</b>	<b>\$31,251.90</b>		<b>\$31,256.82</b>

**300 Purchased Professional and Technical Services**

322 Professional Educational Services – Ius		147,582.87	218,836.74	366,419.61
330 Other Professional Services	9,330.00			9,330.00
<b>Total Purchased Professional and Technical Services</b>	<b>\$9,330.00</b>	<b>\$147,582.87</b>	<b>\$218,836.74</b>	<b>\$375,749.61</b>

**500 Other Purchased Services**

567 Tuition To Approved Private Schools (APS) and PA Chartered Schools for the Deaf and Blind		281,672.00		281,672.00
<b>Total Other Purchased Services</b>		<b>\$281,672.00</b>		<b>\$281,672.00</b>

**600 Supplies**

610 General Supplies		4,586.93		4,586.93
650 Supplies & Fees – Technology Related			232.74	232.74
<b>Total Supplies</b>		<b>\$4,586.93</b>	<b>\$232.74</b>	<b>\$4,819.67</b>

**800 Other Objects**

810 Dues and Fees		28.50		28.50
<b>Total Other Objects</b>		<b>\$28.50</b>		<b>\$28.50</b>

<b>Total 1270 Multi-Handicapped Support</b>	<b>\$9,334.92</b>	<b>\$517,351.76</b>	<b>\$219,069.48</b>	<b>\$745,756.16</b>
---	-------------------	---------------------	---------------------	---------------------

General Fund (10)

1280 Early Intervention Support

300 Purchased Professional and Technical Services

322 Professional Educational Services – lus

**Total Purchased Professional and Technical Services**

**Total 1280 Early Intervention Support**

	<u>Elementary</u>	<u>Secondary</u>	<u>Federal</u>	<u>Total</u>
	165,239.45		5,984.00	171,223.45
	<b>\$165,239.45</b>		<b>\$5,984.00</b>	<b>\$171,223.45</b>
	<b>\$165,239.45</b>		<b>\$5,984.00</b>	<b>\$171,223.45</b>

**General Fund (10)**

	<u>Elementary</u>	<u>Secondary</u>	<u>Federal</u>	<u>Total</u>
<b>1290 Special Programs - Other Support</b>				
<b>100 Personnel Services – Salaries</b>				
100 Personnel Services – Salaries	615.76	615.76		1,231.52
<b>Total Personnel Services – Salaries</b>	<b>\$615.76</b>	<b>\$615.76</b>		<b>\$1,231.52</b>
<b>200 Personnel Services – Employee Benefits</b>				
220 Social Security Contributions	47.11	47.10		94.21
230 PSERS Retirement Contributions	205.85	205.85		411.70
<b>Total Personnel Services – Employee Benefits</b>	<b>\$252.96</b>	<b>\$252.95</b>		<b>\$505.91</b>
<b>300 Purchased Professional and Technical Services</b>				
322 Professional Educational Services – Ius		178,394.00		178,394.00
330 Other Professional Services	33,999.99	39,560.04		73,560.03
<b>Total Purchased Professional and Technical Services</b>	<b>\$33,999.99</b>	<b>\$217,954.04</b>		<b>\$251,954.03</b>
<b>400 Purchased Property Services</b>				
430 Repairs and Maintenance Services		59.00		59.00
<b>Total Purchased Property Services</b>		<b>\$59.00</b>		<b>\$59.00</b>
<b>500 Other Purchased Services</b>				
562 Tuition To Pennsylvania Charter Schools	517,005.54	592,254.19		1,109,259.73
567 Tuition To Approved Private Schools (APS) and PA Chartered Schools for the Deaf and Blind	317,231.10	321,405.61		638,636.71
594 IU Payment By Withholding for Institutionalized Children’s Programs – Special Classes		1,177.19		1,177.19
<b>Total Other Purchased Services</b>	<b>\$834,236.64</b>	<b>\$914,836.99</b>		<b>\$1,749,073.63</b>
<b>600 Supplies</b>				
610 General Supplies	1,192.48	16.88		1,209.36
640 Books and Periodicals			57.39	57.39
650 Supplies & Fees – Technology Related		5,399.00	3,526.68	8,925.68
<b>Total Supplies</b>	<b>\$1,192.48</b>	<b>\$5,415.88</b>	<b>\$3,584.07</b>	<b>\$10,192.43</b>
<b>Total 1290 Special Programs - Other Support</b>	<b>\$870,297.83</b>	<b>\$1,139,134.62</b>	<b>\$3,584.07</b>	<b>\$2,013,016.52</b>

General Fund (10)

1300 Vocational Education

500 Other Purchased Services

564 Tuition To Career and Technology Centers

**Total Other Purchased Services**

**Total 1300 Vocational Education**

Elementary

Secondary

Federal

Total

1,843,879.00

1,843,879.00

**\$1,843,879.00**

**\$1,843,879.00**

**\$1,843,879.00**

**\$1,843,879.00**

**General Fund (10)**

	<u>Elementary</u>	<u>Secondary</u>	<u>Federal</u>	<u>Total</u>
<b>1400 Other Instructional Programs – Elementary / Secondary</b>				
<b>100 Personnel Services – Salaries</b>				
100 Personnel Services – Salaries	4,810.00	11,950.00		16,760.00
<b>Total Personnel Services – Salaries</b>	<b>\$4,810.00</b>	<b>\$11,950.00</b>		<b>\$16,760.00</b>
<b>200 Personnel Services – Employee Benefits</b>				
220 Social Security Contributions	363.60	881.47		1,245.07
230 PSERS Retirement Contributions	1,096.50	3,955.78		5,052.28
260 Workers' Compensation		87.23		87.23
<b>Total Personnel Services – Employee Benefits</b>	<b>\$1,460.10</b>	<b>\$4,924.48</b>		<b>\$6,384.58</b>
<b>300 Purchased Professional and Technical Services</b>				
322 Professional Educational Services – Ius	5,045.60			5,045.60
323 Professional Educational Services – Other Educational Agencies	1,665.00	23,051.38		24,716.38
<b>Total Purchased Professional and Technical Services</b>	<b>\$6,710.60</b>	<b>\$23,051.38</b>		<b>\$29,761.98</b>
<b>500 Other Purchased Services</b>				
568 Tuition To Private Residential Rehabilitative Institutions (PRRI) [In-State] and Detention Centers		1,270.00		1,270.00
597 Direct Payments To Intermediate Units for Institutionalized Childrens' Program		652.50		652.50
<b>Total Other Purchased Services</b>		<b>\$1,922.50</b>		<b>\$1,922.50</b>
<b>Total 1400 Other Instructional Programs – Elementary / Secondary</b>	<b>\$12,980.70</b>	<b>\$41,848.36</b>		<b>\$54,829.06</b>

General Fund (10)

1420 Summer School

100 Personnel Services – Salaries

	<u>Elementary</u>	<u>Secondary</u>	<u>Federal</u>	<u>Total</u>
100 Personnel Services – Salaries	2,400.00			2,400.00
<b>Total Personnel Services – Salaries</b>	<b>\$2,400.00</b>			<b>\$2,400.00</b>

200 Personnel Services – Employee Benefits

220 Social Security Contributions	183.61			183.61
230 PSERS Retirement Contributions	290.84			290.84

<b>Total Personnel Services – Employee Benefits</b>	<b>\$474.45</b>			<b>\$474.45</b>
<b>Total 1420 Summer School</b>	<b>\$2,874.45</b>			<b>\$2,874.45</b>

**General Fund (10)**

	<u>Elementary</u>	<u>Secondary</u>	<u>Federal</u>	<u>Total</u>
<b>1430 Homebound Instruction</b>				
<b>100 Personnel Services – Salaries</b>				
100 Personnel Services – Salaries	2,410.00	11,950.00		14,360.00
<b>Total Personnel Services – Salaries</b>	<b>\$2,410.00</b>	<b>\$11,950.00</b>		<b>\$14,360.00</b>
<b>200 Personnel Services – Employee Benefits</b>				
220 Social Security Contributions	179.99	881.47		1,061.46
230 PSERS Retirement Contributions	805.66	3,955.78		4,761.44
260 Workers’ Compensation		87.23		87.23
<b>Total Personnel Services – Employee Benefits</b>	<b>\$985.65</b>	<b>\$4,924.48</b>		<b>\$5,910.13</b>
<b>300 Purchased Professional and Technical Services</b>				
323 Professional Educational Services – Other Educational Agencies	1,665.00	23,051.38		24,716.38
<b>Total Purchased Professional and Technical Services</b>	<b>\$1,665.00</b>	<b>\$23,051.38</b>		<b>\$24,716.38</b>
<b>Total 1430 Homebound Instruction</b>	<b>\$5,060.65</b>	<b>\$39,925.86</b>		<b>\$44,986.51</b>

General Fund (10)

	<u>Elementary</u>	<u>Secondary</u>	<u>Federal</u>	<u>Total</u>
<b>1440 Alternative Regular Education Programs</b>				
<b>300 <u>Purchased Professional and Technical Services</u></b>				
322 Professional Educational Services – Ius	5,045.60			5,045.60
<b>Total Purchased Professional and Technical Services</b>	<b>\$5,045.60</b>			<b>\$5,045.60</b>
<b>500 <u>Other Purchased Services</u></b>				
568 Tuition To Private Residential Rehabilitative Institutions (PRRI) [In-State] and Detention Centers		1,270.00		1,270.00
597 Direct Payments To Intermediate Units for Institutionalized Childrens' Program		652.50		652.50
<b>Total Other Purchased Services</b>		<b>\$1,922.50</b>		<b>\$1,922.50</b>
<b>Total 1440 Alternative Regular Education Programs</b>	<b>\$5,045.60</b>	<b>\$1,922.50</b>		<b>\$6,968.10</b>

General Fund (10)

	<u>Elementary</u>	<u>Secondary</u>	<u>Federal</u>	<u>Total</u>
<b>1441 Adjudicated / Court-Placed Programs</b>				
<b>300 <u>Purchased Professional and Technical Services</u></b>				
322 Professional Educational Services – lus	5,045.60			5,045.60
<b>Total Purchased Professional and Technical Services</b>	<b>\$5,045.60</b>			<b>\$5,045.60</b>
<b>500 <u>Other Purchased Services</u></b>				
597 Direct Payments To Intermediate Units for Institutionalized Childrens' Program		652.50		652.50
<b>Total Other Purchased Services</b>		<b>\$652.50</b>		<b>\$652.50</b>
<b>Total 1441 Adjudicated / Court-Placed Programs</b>	<b>\$5,045.60</b>	<b>\$652.50</b>		<b>\$5,698.10</b>

General Fund (10)

1442 Alternative Education Programs

Elementary

Secondary

Federal

Total

500 Other Purchased Services

568 Tuition To Private Residential Rehabilitative Institutions (PRRI) [In-State] and Detention Centers

1,270.00

1,270.00

**Total Other Purchased Services**

**\$1,270.00**

**\$1,270.00**

**Total 1442 Alternative Education Programs**

**\$1,270.00**

**\$1,270.00**

General Fund (10)

1500 Nonpublic School Programs

Elementary

Secondary

Federal

Total

300 Purchased Professional and Technical Services

322 Professional Educational Services – lus

972.00

972.00

**Total Purchased Professional and Technical Services**

**\$972.00**

**\$972.00**

**Total 1500 Nonpublic School Programs**

**\$972.00**

**\$972.00**

General Fund (10)

2000 Support Services

Total

100 Personnel Services – Salaries

100 Personnel Services – Salaries 16,648,307.84

**Total Personnel Services – Salaries \$16,648,307.84**

200 Personnel Services – Employee Benefits

210 Group Insurance – Contracted Provider 20,763.05

220 Social Security Contributions 1,249,896.30

230 PSERS Retirement Contributions 5,560,620.05

240 Tuition Reimbursement 202,910.82

250 Unemployment Compensation 830.91

260 Workers' Compensation 59,112.00

270 Group Insurance – Self-Insurance 3,546,487.29

280 Other Post-Employment Benefits (OPEB) 5,234.50

291 Other Retirement Plans 73,157.55

**Total Personnel Services – Employee Benefits \$10,719,012.47**

300 Purchased Professional and Technical Services

322 Professional Educational Services – Ius 62,784.48

329 Professional Educational Services – Other 218,160.34

330 Other Professional Services 2,119,911.83

340 Technical Services 137,014.93

350 Security / Safety Services 24,862.00

360 Employee Training and Development Services 239,927.69

390 Other Purchased Professional and Technical Services 998.77

**Total Purchased Professional and Technical Services \$2,803,660.04**

400 Purchased Property Services

410 Cleaning Services 2,227,908.22

420 Utility Services 257,054.42

430 Repairs and Maintenance Services 621,105.11

440 Rentals 434,936.35

450 Construction Services 24,611.00

460 Extermination Services 5,424.00

490 Other Purchased Property Services 307.94

**Total Purchased Property Services \$3,571,347.04**

500 Other Purchased Services

510 Student Transportation Services 194.23

511 Student Transportation Services from Another LEA Within the State 2,040.00

513 Contracted Carriers 7,164,226.26

516 Student Transportation Services From the IU 289,895.02

519 Student Transportation Services From Other Sources 11,742.00

520 Insurance – General 112,571.00

522 Automotive Liability Insurance 55,233.00

523 General Property and Liability Insurance 280,725.00

530 Communications 257,541.78

549 Other Advertising/Public Relations 5,063.13

550 Printing and Binding 11,083.14

General Fund (10)

2000 Support Services

Total

500 Other Purchased Services

580 Travel	48,752.89
595 IU Payments By Withholding	109,213.09

<b>Total Other Purchased Services</b>	<b>\$8,348,280.54</b>
---------------------------------------	-----------------------

600 Supplies

610 General Supplies	1,033,194.19
620 Energy	1,615,324.98
630 Food	12,117.83
640 Books and Periodicals	56,043.61
650 Supplies & Fees – Technology Related	620,668.83

<b>Total Supplies</b>	<b>\$3,337,349.44</b>
-----------------------	-----------------------

700 Property

752 Capital Equipment – Original and Additional	121,835.24
756 Capitalized Technology Equipment – Original	5,543.35
758 Capitalized Technology Software - Original	12,364.00
762 Capitalized Equipment - Replacement	79,854.94
766 Capitalized Technology Equipment – Replacement	9,730.52
768 Capitalized Technology Software - Replacement	13,768.45

<b>Total Property</b>	<b>\$243,096.50</b>
-----------------------	---------------------

800 Other Objects

810 Dues and Fees	69,153.15
890 Miscellaneous Expenditures	15,624.77

<b>Total Other Objects</b>	<b>\$84,777.92</b>
----------------------------	--------------------

<b>Total 2000 Support Services</b>	<b>\$45,755,831.79</b>
------------------------------------	------------------------

**General Fund (10)**

	<u>Elementary</u>	<u>Secondary</u>	<u>Federal</u>	<u>Total</u>
<b>2100 Support Services – Students</b>				
<b>100 Personnel Services – Salaries</b>				
100 Personnel Services – Salaries	1,412,042.26	1,707,759.52		3,274,977.81
<b>Total Personnel Services – Salaries</b>	<b>\$1,412,042.26</b>	<b>\$1,707,759.52</b>		<b>\$3,274,977.81</b>
<b>200 Personnel Services – Employee Benefits</b>				
210 Group Insurance – Contracted Provider	1,087.58	1,571.14		2,733.92
220 Social Security Contributions	107,622.60	129,788.14		249,421.52
230 PSERS Retirement Contributions	482,412.49	582,620.32		1,118,173.47
250 Unemployment Compensation	64.95	84.54		156.45
260 Workers' Compensation	4,971.50	5,811.65		11,302.52
270 Group Insurance – Self-Insurance	304,323.72	422,765.07		746,191.09
291 Other Retirement Plans	6,727.50	6,210.00		12,937.50
<b>Total Personnel Services – Employee Benefits</b>	<b>\$907,210.34</b>	<b>\$1,148,850.86</b>		<b>\$2,140,916.47</b>
<b>300 Purchased Professional and Technical Services</b>				
322 Professional Educational Services – Ius	10,530.00	23,424.79	843.02	34,797.81
329 Professional Educational Services – Other	12,339.00	462.30		12,801.30
330 Other Professional Services	269,859.55	213,758.40	68,056.36	551,674.31
<b>Total Purchased Professional and Technical Services</b>	<b>\$292,728.55</b>	<b>\$237,645.49</b>	<b>\$68,899.38</b>	<b>\$599,273.42</b>
<b>500 Other Purchased Services</b>				
510 Student Transportation Services		194.23		194.23
530 Communications				880.23
550 Printing and Binding		33.56		33.56
580 Travel	458.65	96.19		5,073.32
<b>Total Other Purchased Services</b>	<b>\$458.65</b>	<b>\$323.98</b>		<b>\$6,181.34</b>
<b>600 Supplies</b>				
610 General Supplies	21,771.77	78,117.75	27,532.39	127,475.15
630 Food		77.73		77.73
640 Books and Periodicals	1,260.30			1,260.30
650 Supplies & Fees – Technology Related	18,922.22	6,661.10	146.00	25,729.32
<b>Total Supplies</b>	<b>\$41,954.29</b>	<b>\$84,856.58</b>	<b>\$27,678.39</b>	<b>\$154,542.50</b>
<b>800 Other Objects</b>				
810 Dues and Fees		685.00		685.00
<b>Total Other Objects</b>		<b>\$685.00</b>		<b>\$685.00</b>
<b>Total 2100 Support Services – Students</b>	<b>\$2,654,394.09</b>	<b>\$3,180,121.43</b>	<b>\$96,577.77</b>	<b>\$6,176,576.54</b>

**General Fund (10)**

	<u>Elementary</u>	<u>Secondary</u>	<u>Federal</u>	<u>Total</u>
<b>2120 Guidance Services</b>				
<b>100 Personnel Services – Salaries</b>				
100 Personnel Services – Salaries	1,028,259.54	1,353,498.54		2,381,758.08
<b>Total Personnel Services – Salaries</b>	<b>\$1,028,259.54</b>	<b>\$1,353,498.54</b>		<b>\$2,381,758.08</b>
<b>200 Personnel Services – Employee Benefits</b>				
210 Group Insurance – Contracted Provider	855.40	1,356.82		2,212.22
220 Social Security Contributions	78,146.50	102,579.42		180,725.92
230 PSERS Retirement Contributions	352,253.38	462,473.45		814,726.83
250 Unemployment Compensation	48.68	69.52		118.20
260 Workers' Compensation	3,633.72	4,576.77		8,210.49
270 Group Insurance – Self-Insurance	239,862.33	363,262.27		603,124.60
<b>Total Personnel Services – Employee Benefits</b>	<b>\$674,800.01</b>	<b>\$934,318.25</b>		<b>\$1,609,118.26</b>
<b>300 Purchased Professional and Technical Services</b>				
329 Professional Educational Services – Other	12,339.00	462.30		12,801.30
330 Other Professional Services	177,390.72	193,409.28		370,800.00
<b>Total Purchased Professional and Technical Services</b>	<b>\$189,729.72</b>	<b>\$193,871.58</b>		<b>\$383,601.30</b>
<b>500 Other Purchased Services</b>				
510 Student Transportation Services		194.23		194.23
550 Printing and Binding		33.56		33.56
<b>Total Other Purchased Services</b>		<b>\$227.79</b>		<b>\$227.79</b>
<b>600 Supplies</b>				
610 General Supplies	4,136.27	1,015.05		5,151.32
630 Food		77.73		77.73
640 Books and Periodicals	1,260.30			1,260.30
650 Supplies & Fees – Technology Related		6,661.10		6,661.10
<b>Total Supplies</b>	<b>\$5,396.57</b>	<b>\$7,753.88</b>		<b>\$13,150.45</b>
<b>800 Other Objects</b>				
810 Dues and Fees		685.00		685.00
<b>Total Other Objects</b>		<b>\$685.00</b>		<b>\$685.00</b>
<b>Total 2120 Guidance Services</b>	<b>\$1,898,185.84</b>	<b>\$2,490,355.04</b>		<b>\$4,388,540.88</b>

**General Fund (10)**

	<u>Elementary</u>	<u>Secondary</u>	<u>Federal</u>	<u>Total</u>
<b>2140 Psychological Services</b>				
<b>100 Personnel Services – Salaries</b>				
100 Personnel Services – Salaries	383,782.72	354,260.98		738,043.70
<b>Total Personnel Services – Salaries</b>	<b>\$383,782.72</b>	<b>\$354,260.98</b>		<b>\$738,043.70</b>
<b>200 Personnel Services – Employee Benefits</b>				
210 Group Insurance – Contracted Provider	232.18	214.32		446.50
220 Social Security Contributions	29,476.10	27,208.72		56,684.82
230 PSERS Retirement Contributions	130,159.11	120,146.87		250,305.98
250 Unemployment Compensation	16.27	15.02		31.29
260 Workers' Compensation	1,337.78	1,234.88		2,572.66
270 Group Insurance – Self-Insurance	64,461.39	59,502.80		123,964.19
291 Other Retirement Plans	6,727.50	6,210.00		12,937.50
<b>Total Personnel Services – Employee Benefits</b>	<b>\$232,410.33</b>	<b>\$214,532.61</b>		<b>\$446,942.94</b>
<b>300 Purchased Professional and Technical Services</b>				
322 Professional Educational Services – Ius	10,530.00	10,530.00	843.02	21,903.02
330 Other Professional Services	7,308.83	550.84	68,056.36	75,916.03
<b>Total Purchased Professional and Technical Services</b>	<b>\$17,838.83</b>	<b>\$11,080.84</b>	<b>\$68,899.38</b>	<b>\$97,819.05</b>
<b>500 Other Purchased Services</b>				
580 Travel	458.65	96.19		554.84
<b>Total Other Purchased Services</b>	<b>\$458.65</b>	<b>\$96.19</b>		<b>\$554.84</b>
<b>600 Supplies</b>				
610 General Supplies	17,635.50	77,102.70	27,532.39	122,270.59
650 Supplies & Fees – Technology Related	18,922.22		146.00	19,068.22
<b>Total Supplies</b>	<b>\$36,557.72</b>	<b>\$77,102.70</b>	<b>\$27,678.39</b>	<b>\$141,338.81</b>
<b>Total 2140 Psychological Services</b>	<b>\$671,048.25</b>	<b>\$657,073.32</b>	<b>\$96,577.77</b>	<b>\$1,424,699.34</b>

General Fund (10)

2150 Speech Pathology and Audiology Services

300 Purchased Professional and Technical Services

322 Professional Educational Services – lus

330 Other Professional Services

Total Purchased Professional and Technical Services

Total 2150 Speech Pathology and Audiology Services

	<u>Elementary</u>	<u>Secondary</u>	<u>Federal</u>	<u>Total</u>
		12,894.79		12,894.79
	85,030.14	19,798.28		104,828.42
	<b>\$85,030.14</b>	<b>\$32,693.07</b>		<b>\$117,723.21</b>
	<b>\$85,030.14</b>	<b>\$32,693.07</b>		<b>\$117,723.21</b>

**General Fund (10)**

**2160 Social Work Services**

Elementary                      Secondary                      Federal                      Total

<b>100</b>	<b><u>Personnel Services – Salaries</u></b>				
	100 Personnel Services – Salaries				102,010.00
<b>Total Personnel Services – Salaries</b>					<b>\$102,010.00</b>
<b>200</b>	<b><u>Personnel Services – Employee Benefits</u></b>				
	210 Group Insurance – Contracted Provider				61.10
	220 Social Security Contributions				7,995.14
	230 PSERS Retirement Contributions				35,367.26
	250 Unemployment Compensation				3.48
	260 Workers' Compensation				356.06
	270 Group Insurance – Self-Insurance				16,866.53
<b>Total Personnel Services – Employee Benefits</b>					<b>\$60,649.57</b>
<b>500</b>	<b><u>Other Purchased Services</u></b>				
	530 Communications				880.23
	580 Travel				4,518.48
<b>Total Other Purchased Services</b>					<b>\$5,398.71</b>
<b>Total 2160 Social Work Services</b>					<b>\$168,058.28</b>

General Fund (10)

2170 Student Accounting Services

Elementary

Secondary

Federal

Total

100 Personnel Services – Salaries

100 Personnel Services – Salaries

53,166.03

**Total Personnel Services – Salaries**

**\$53,166.03**

200 Personnel Services – Employee Benefits

210 Group Insurance – Contracted Provider

14.10

220 Social Security Contributions

4,015.64

230 PSERS Retirement Contributions

17,773.40

250 Unemployment Compensation

3.48

260 Workers' Compensation

163.31

270 Group Insurance – Self-Insurance

2,235.77

**Total Personnel Services – Employee Benefits**

**\$24,205.70**

600 Supplies

610 General Supplies

53.24

**Total Supplies**

**\$53.24**

**Total 2170 Student Accounting Services**

**\$77,424.97**

General Fund (10)

2190 Other Student Services

300 Purchased Professional and Technical Services

330 Other Professional Services

Total Purchased Professional and Technical Services

Total 2190 Other Student Services

Elementary

Secondary

Federal

Total

129.86

129.86

\$129.86

\$129.86

\$129.86

\$129.86

LEA : 123467303 Spring-Ford Area SD

Printed 1/16/2020 3:39:49 PM

Page - 10 of 70

**General Fund (10)****2200 Support Services – Instructional Staff**

	<u>Elementary</u>	<u>Secondary</u>	<u>Federal</u>	<u>Total</u>
<b>100 Personnel Services – Salaries</b>				
100 Personnel Services – Salaries	1,876,585.00	1,331,893.76		3,208,478.76
<b>Total Personnel Services – Salaries</b>	<b>\$1,876,585.00</b>	<b>\$1,331,893.76</b>		<b>\$3,208,478.76</b>
<b>200 Personnel Services – Employee Benefits</b>				
210 Group Insurance – Contracted Provider	1,753.11	1,569.79		3,322.90
220 Social Security Contributions	143,172.05	101,592.23		244,764.28
230 PSERS Retirement Contributions	626,644.32	447,789.23		1,074,433.55
240 Tuition Reimbursement	84,667.78	72,687.04		157,354.82
250 Unemployment Compensation	79.14	46.02		125.16
260 Workers' Compensation	6,941.62	4,238.92		11,180.54
270 Group Insurance – Self-Insurance	304,786.20	181,275.51		486,061.71
291 Other Retirement Plans	11,175.00	7,087.50		18,262.50
<b>Total Personnel Services – Employee Benefits</b>	<b>\$1,179,219.22</b>	<b>\$816,286.24</b>		<b>\$1,995,505.46</b>
<b>300 Purchased Professional and Technical Services</b>				
329 Professional Educational Services – Other	88,318.88	54,057.96		142,376.84
330 Other Professional Services			13,684.50	13,684.50
340 Technical Services		2,388.00		2,388.00
360 Employee Training and Development Services	66,616.26	33,178.32	98,746.99	198,541.57
<b>Total Purchased Professional and Technical Services</b>	<b>\$154,935.14</b>	<b>\$89,624.28</b>	<b>\$112,431.49</b>	<b>\$356,990.91</b>
<b>400 Purchased Property Services</b>				
430 Repairs and Maintenance Services	1,727.67	1,158.92		2,886.59
<b>Total Purchased Property Services</b>	<b>\$1,727.67</b>	<b>\$1,158.92</b>		<b>\$2,886.59</b>
<b>500 Other Purchased Services</b>				
530 Communications	2,793.94	3,071.48		5,865.42
550 Printing and Binding	5.19	4.80		9.99
580 Travel	2,039.28	7,582.74	258.25	9,880.27
<b>Total Other Purchased Services</b>	<b>\$4,838.41</b>	<b>\$10,659.02</b>	<b>\$258.25</b>	<b>\$15,755.68</b>
<b>600 Supplies</b>				
610 General Supplies	7,508.65	3,697.43		11,206.08
630 Food	841.45	776.73		1,618.18
640 Books and Periodicals	41,099.08	8,211.74		49,310.82
650 Supplies & Fees – Technology Related	69,566.29	64,252.48		133,818.77
<b>Total Supplies</b>	<b>\$119,015.47</b>	<b>\$76,938.38</b>		<b>\$195,953.85</b>
<b>800 Other Objects</b>				
810 Dues and Fees	1,128.12	686.88		1,815.00
<b>Total Other Objects</b>	<b>\$1,128.12</b>	<b>\$686.88</b>		<b>\$1,815.00</b>
<b>Total 2200 Support Services – Instructional Staff</b>	<b>\$3,337,449.03</b>	<b>\$2,327,247.48</b>	<b>\$112,689.74</b>	<b>\$5,777,386.25</b>

General Fund (10)

2220 Technology Support Services

600 Supplies  
650 Supplies & Fees – Technology Related

<u>Elementary</u>	<u>Secondary</u>	<u>Federal</u>	<u>Total</u>
500.00			500.00
<b>\$500.00</b>			<b>\$500.00</b>
<b>\$500.00</b>			<b>\$500.00</b>

**Total Supplies**

**Total 2220 Technology Support Services**

**General Fund (10)**

	<u>Elementary</u>	<u>Secondary</u>	<u>Federal</u>	<u>Total</u>
<b>2230 Educational Television Services</b>				
<b>100 Personnel Services – Salaries</b>				
100 Personnel Services – Salaries		30,715.78		30,715.78
<b>Total Personnel Services – Salaries</b>		<b>\$30,715.78</b>		<b>\$30,715.78</b>
<b>200 Personnel Services – Employee Benefits</b>				
210 Group Insurance – Contracted Provider		64.32		64.32
220 Social Security Contributions		2,309.02		2,309.02
230 PSERS Retirement Contributions		10,268.25		10,268.25
270 Group Insurance – Self-Insurance		5,789.42		5,789.42
<b>Total Personnel Services – Employee Benefits</b>		<b>\$18,431.01</b>		<b>\$18,431.01</b>
<b>300 Purchased Professional and Technical Services</b>				
340 Technical Services		2,388.00		2,388.00
<b>Total Purchased Professional and Technical Services</b>		<b>\$2,388.00</b>		<b>\$2,388.00</b>
<b>400 Purchased Property Services</b>				
430 Repairs and Maintenance Services		460.00		460.00
<b>Total Purchased Property Services</b>		<b>\$460.00</b>		<b>\$460.00</b>
<b>500 Other Purchased Services</b>				
530 Communications		398.65		398.65
580 Travel		160.38		160.38
<b>Total Other Purchased Services</b>		<b>\$559.03</b>		<b>\$559.03</b>
<b>600 Supplies</b>				
610 General Supplies		103.25		103.25
650 Supplies & Fees – Technology Related	2,238.42	6,564.82		8,803.24
<b>Total Supplies</b>	<b>\$2,238.42</b>	<b>\$6,668.07</b>		<b>\$8,906.49</b>
<b>Total 2230 Educational Television Services</b>	<b>\$2,238.42</b>	<b>\$59,221.89</b>		<b>\$61,460.31</b>

**General Fund (10)**

	<u>Elementary</u>	<u>Secondary</u>	<u>Federal</u>	<u>Total</u>
<b>2250 School Library Services</b>				
<b>100 Personnel Services – Salaries</b>				
100 Personnel Services – Salaries	750,717.04	497,535.20		1,248,252.24
<b>Total Personnel Services – Salaries</b>	<b>\$750,717.04</b>	<b>\$497,535.20</b>		<b>\$1,248,252.24</b>
<b>200 Personnel Services – Employee Benefits</b>				
210 Group Insurance – Contracted Provider	493.50	305.50		799.00
220 Social Security Contributions	57,876.71	38,840.47		96,717.18
230 PSERS Retirement Contributions	256,945.23	172,115.96		429,061.19
250 Unemployment Compensation	27.83	17.39		45.22
260 Workers' Compensation	2,606.36	1,660.19		4,266.55
270 Group Insurance – Self-Insurance	155,480.09	55,340.99		210,821.08
291 Other Retirement Plans	9,975.00	7,087.50		17,062.50
<b>Total Personnel Services – Employee Benefits</b>	<b>\$483,404.72</b>	<b>\$275,368.00</b>		<b>\$758,772.72</b>
<b>300 Purchased Professional and Technical Services</b>				
329 Professional Educational Services – Other	8,086.31	5,706.13		13,792.44
<b>Total Purchased Professional and Technical Services</b>	<b>\$8,086.31</b>	<b>\$5,706.13</b>		<b>\$13,792.44</b>
<b>400 Purchased Property Services</b>				
430 Repairs and Maintenance Services	1,727.67	698.92		2,426.59
<b>Total Purchased Property Services</b>	<b>\$1,727.67</b>	<b>\$698.92</b>		<b>\$2,426.59</b>
<b>600 Supplies</b>				
610 General Supplies	4,709.04	1,773.63		6,482.67
640 Books and Periodicals	37,465.24	6,697.93		44,163.17
650 Supplies & Fees – Technology Related	14,807.97	20,746.22		35,554.19
<b>Total Supplies</b>	<b>\$56,982.25</b>	<b>\$29,217.78</b>		<b>\$86,200.03</b>
<b>Total 2250 School Library Services</b>	<b>\$1,300,917.99</b>	<b>\$808,526.03</b>		<b>\$2,109,444.02</b>

**General Fund (10)**

	<u>Elementary</u>	<u>Secondary</u>	<u>Federal</u>	<u>Total</u>
<b>2260 Instruction and Curriculum Development Services</b>				
<b>100 Personnel Services – Salaries</b>				
100 Personnel Services – Salaries	510,650.59	604,152.90		1,114,803.49
<b>Total Personnel Services – Salaries</b>	<b>\$510,650.59</b>	<b>\$604,152.90</b>		<b>\$1,114,803.49</b>
<b>200 Personnel Services – Employee Benefits</b>				
210 Group Insurance – Contracted Provider	823.82	1,062.36		1,886.18
220 Social Security Contributions	38,364.19	45,293.07		83,657.26
230 PSERS Retirement Contributions	162,608.99	198,327.01		360,936.00
250 Unemployment Compensation	21.41	20.29		41.70
260 Workers' Compensation	2,091.38	1,952.29		4,043.67
270 Group Insurance – Self-Insurance	78,452.57	101,176.30		179,628.87
<b>Total Personnel Services – Employee Benefits</b>	<b>\$282,362.36</b>	<b>\$347,831.32</b>		<b>\$630,193.68</b>
<b>300 Purchased Professional and Technical Services</b>				
329 Professional Educational Services – Other	12,483.29	1,346.11		13,829.40
<b>Total Purchased Professional and Technical Services</b>	<b>\$12,483.29</b>	<b>\$1,346.11</b>		<b>\$13,829.40</b>
<b>500 Other Purchased Services</b>				
530 Communications	2,793.94	2,672.83		5,466.77
550 Printing and Binding	5.19	4.80		9.99
580 Travel	809.28	665.81		1,475.09
<b>Total Other Purchased Services</b>	<b>\$3,608.41</b>	<b>\$3,343.44</b>		<b>\$6,951.85</b>
<b>600 Supplies</b>				
610 General Supplies	2,742.71	1,768.03		4,510.74
640 Books and Periodicals	745.06	687.74		1,432.80
650 Supplies & Fees – Technology Related	52,019.90	36,941.44		88,961.34
<b>Total Supplies</b>	<b>\$55,507.67</b>	<b>\$39,397.21</b>		<b>\$94,904.88</b>
<b>800 Other Objects</b>				
810 Dues and Fees	1,128.12	686.88		1,815.00
<b>Total Other Objects</b>	<b>\$1,128.12</b>	<b>\$686.88</b>		<b>\$1,815.00</b>
<b>Total 2260 Instruction and Curriculum Development Services</b>	<b>\$865,740.44</b>	<b>\$996,757.86</b>		<b>\$1,862,498.30</b>

**General Fund (10)**

**2270 Instructional Staff Professional Development Services**

	<u>Elementary</u>	<u>Secondary</u>	<u>Federal</u>	<u>Total</u>
<b>100 Personnel Services – Salaries</b>				
100 Personnel Services – Salaries	615,217.37	199,489.88		814,707.25
<b>Total Personnel Services – Salaries</b>	<b>\$615,217.37</b>	<b>\$199,489.88</b>		<b>\$814,707.25</b>
<b>200 Personnel Services – Employee Benefits</b>				
210 Group Insurance – Contracted Provider	435.79	137.61		573.40
220 Social Security Contributions	46,931.15	15,149.67		62,080.82
230 PSERS Retirement Contributions	207,090.10	67,078.01		274,168.11
240 Tuition Reimbursement	84,667.78	72,687.04		157,354.82
250 Unemployment Compensation	29.90	8.34		38.24
260 Workers' Compensation	2,243.88	626.44		2,870.32
270 Group Insurance – Self-Insurance	70,853.54	18,968.80		89,822.34
291 Other Retirement Plans	1,200.00			1,200.00
<b>Total Personnel Services – Employee Benefits</b>	<b>\$413,452.14</b>	<b>\$174,655.91</b>		<b>\$588,108.05</b>
<b>300 Purchased Professional and Technical Services</b>				
329 Professional Educational Services – Other	67,749.28	47,005.72		114,755.00
360 Employee Training and Development Services	66,616.26	33,178.32	98,746.99	198,541.57
<b>Total Purchased Professional and Technical Services</b>	<b>\$134,365.54</b>	<b>\$80,184.04</b>	<b>\$98,746.99</b>	<b>\$313,296.57</b>
<b>500 Other Purchased Services</b>				
580 Travel	1,230.00	6,756.55	258.25	8,244.80
<b>Total Other Purchased Services</b>	<b>\$1,230.00</b>	<b>\$6,756.55</b>	<b>\$258.25</b>	<b>\$8,244.80</b>
<b>600 Supplies</b>				
610 General Supplies	56.90	52.52		109.42
630 Food	841.45	776.73		1,618.18
640 Books and Periodicals	2,888.78	826.07		3,714.85
<b>Total Supplies</b>	<b>\$3,787.13</b>	<b>\$1,655.32</b>		<b>\$5,442.45</b>
<b>Total 2270 Instructional Staff Professional Development Services</b>	<b>\$1,168,052.18</b>	<b>\$462,741.70</b>	<b>\$99,005.24</b>	<b>\$1,729,799.12</b>

General Fund (10)

2280 Nonpublic Support Services

Elementary

Secondary

Federal

Total

300 Purchased Professional and Technical Services

330 Other Professional Services

13,684.50

13,684.50

**Total Purchased Professional and Technical Services**

**\$13,684.50**

**\$13,684.50**

**Total 2280 Nonpublic Support Services**

**\$13,684.50**

**\$13,684.50**

**General Fund (10)**

	<u>Elementary</u>	<u>Secondary</u>	<u>Federal</u>	<u>Total</u>
<b>2300 Support Services – Administration</b>				
<b>100 Personnel Services – Salaries</b>				
100 Personnel Services – Salaries	1,748,847.51	1,792,332.50		4,228,459.85
<b>Total Personnel Services – Salaries</b>	<b>\$1,748,847.51</b>	<b>\$1,792,332.50</b>		<b>\$4,228,459.85</b>
<b>200 Personnel Services – Employee Benefits</b>				
210 Group Insurance – Contracted Provider	2,652.01	3,301.45		7,006.94
220 Social Security Contributions	130,023.33	133,737.98		309,908.54
230 PSERS Retirement Contributions	578,164.38	584,711.49		1,366,887.74
250 Unemployment Compensation	83.43	83.42		191.18
260 Workers' Compensation	6,353.07	6,386.66		15,336.04
270 Group Insurance – Self-Insurance	355,033.22	294,792.48		739,457.99
280 Other Post-Employment Benefits (OPEB)	2,721.94	2,512.56		5,234.50
291 Other Retirement Plans	3,459.50			30,101.55
<b>Total Personnel Services – Employee Benefits</b>	<b>\$1,078,490.88</b>	<b>\$1,025,526.04</b>		<b>\$2,474,124.48</b>
<b>300 Purchased Professional and Technical Services</b>				
329 Professional Educational Services – Other	22,812.50			22,812.50
330 Other Professional Services	778.00			241,758.16
340 Technical Services				4,805.00
350 Security / Safety Services				1,886.00
390 Other Purchased Professional and Technical Services				162.99
<b>Total Purchased Professional and Technical Services</b>	<b>\$23,590.50</b>			<b>\$271,424.65</b>
<b>400 Purchased Property Services</b>				
440 Rentals				915.00
<b>Total Purchased Property Services</b>				<b>\$915.00</b>
<b>500 Other Purchased Services</b>				
520 Insurance – General				112,571.00
530 Communications	5,831.80	6,631.59		17,116.30
549 Other Advertising/Public Relations				749.56
550 Printing and Binding	150.04	27.48		8,633.99
580 Travel	1,060.01	7,102.90		13,006.00
<b>Total Other Purchased Services</b>	<b>\$7,041.85</b>	<b>\$13,761.97</b>		<b>\$152,076.85</b>
<b>600 Supplies</b>				
610 General Supplies	5,339.61	703.79		48,284.21
630 Food	97.99	968.89		10,042.62
640 Books and Periodicals	2,249.04			5,227.84
650 Supplies & Fees – Technology Related	628.85			12,342.73
<b>Total Supplies</b>	<b>\$8,315.49</b>	<b>\$1,672.68</b>		<b>\$75,897.40</b>
<b>800 Other Objects</b>				
810 Dues and Fees	3,687.00	6,449.00		44,952.01
<b>Total Other Objects</b>	<b>\$3,687.00</b>	<b>\$6,449.00</b>		<b>\$44,952.01</b>
<b>Total 2300 Support Services – Administration</b>	<b>\$2,869,973.23</b>	<b>\$2,839,742.19</b>		<b>\$7,247,850.24</b>

**General Fund (10)**

	<u>Elementary</u>	<u>Secondary</u>	<u>Federal</u>	<u>Total</u>
<b>2310 Board Services</b>				
<b>100 Personnel Services – Salaries</b>				
100 Personnel Services – Salaries				6,319.26
<b>Total Personnel Services – Salaries</b>				<b>\$6,319.26</b>
<b>200 Personnel Services – Employee Benefits</b>				
220 Social Security Contributions				473.84
230 PSERS Retirement Contributions				2,112.55
260 Workers’ Compensation				24.43
<b>Total Personnel Services – Employee Benefits</b>				<b>\$2,610.82</b>
<b>500 Other Purchased Services</b>				
520 Insurance – General				112,571.00
530 Communications				17.75
549 Other Advertising/Public Relations				451.56
580 Travel				1,220.95
<b>Total Other Purchased Services</b>				<b>\$114,261.26</b>
<b>600 Supplies</b>				
610 General Supplies				355.88
630 Food				114.13
640 Books and Periodicals				225.00
650 Supplies & Fees – Technology Related				1,358.00
<b>Total Supplies</b>				<b>\$2,053.01</b>
<b>800 Other Objects</b>				
810 Dues and Fees				14,730.00
<b>Total Other Objects</b>				<b>\$14,730.00</b>
<b>Total 2310 Board Services</b>				<b>\$139,974.35</b>

**General Fund (10)**

	<u>Elementary</u>	<u>Secondary</u>	<u>Federal</u>	<u>Total</u>
<b>2330 Tax Assessment and Collection Services</b>				
<b>100 Personnel Services – Salaries</b>				
100 Personnel Services – Salaries				46,506.93
<b>Total Personnel Services – Salaries</b>				<b>\$46,506.93</b>
<b>200 Personnel Services – Employee Benefits</b>				
220 Social Security Contributions				3,877.56
260 Workers' Compensation				174.47
<b>Total Personnel Services – Employee Benefits</b>				<b>\$4,052.03</b>
<b>300 Purchased Professional and Technical Services</b>				
330 Other Professional Services				3,820.13
340 Technical Services				305.00
390 Other Purchased Professional and Technical Services				162.99
<b>Total Purchased Professional and Technical Services</b>				<b>\$4,288.12</b>
<b>500 Other Purchased Services</b>				
530 Communications				3,693.10
550 Printing and Binding				1,502.94
580 Travel				152.53
<b>Total Other Purchased Services</b>				<b>\$5,348.57</b>
<b>600 Supplies</b>				
610 General Supplies				1,377.62
650 Supplies & Fees – Technology Related				865.88
<b>Total Supplies</b>				<b>\$2,243.50</b>
<b>800 Other Objects</b>				
810 Dues and Fees				5.00
<b>Total Other Objects</b>				<b>\$5.00</b>
<b>Total 2330 Tax Assessment and Collection Services</b>				<b>\$62,444.15</b>

General Fund (10)

2350 Legal and Accounting Services

Elementary

Secondary

Federal

Total

300 Purchased Professional and Technical Services

330 Other Professional Services

236,454.03

**Total Purchased Professional and Technical Services**

**\$236,454.03**

**Total 2350 Legal and Accounting Services**

**\$236,454.03**

**General Fund (10)**

	<u>Elementary</u>	<u>Secondary</u>	<u>Federal</u>	<u>Total</u>
<b>2360 Office of the Superintendent / Executive Director Services</b>				
<b>100 Personnel Services – Salaries</b>				
100 Personnel Services – Salaries				532,163.89
<b>Total Personnel Services – Salaries</b>				<b>\$532,163.89</b>
<b>200 Personnel Services – Employee Benefits</b>				
210 Group Insurance – Contracted Provider				825.60
220 Social Security Contributions				34,085.60
230 PSERS Retirement Contributions				168,038.06
250 Unemployment Compensation				17.38
260 Workers' Compensation				1,945.93
270 Group Insurance – Self-Insurance				81,227.18
291 Other Retirement Plans				26,642.05
<b>Total Personnel Services – Employee Benefits</b>				<b>\$312,781.80</b>
<b>300 Purchased Professional and Technical Services</b>				
330 Other Professional Services				206.00
<b>Total Purchased Professional and Technical Services</b>				<b>\$206.00</b>
<b>500 Other Purchased Services</b>				
530 Communications	785.08	724.68		1,509.76
549 Other Advertising/Public Relations				298.00
550 Printing and Binding				498.00
580 Travel				2,804.74
<b>Total Other Purchased Services</b>	<b>\$785.08</b>	<b>\$724.68</b>		<b>\$5,110.50</b>
<b>600 Supplies</b>				
610 General Supplies				7,445.43
630 Food				5,498.06
640 Books and Periodicals				2,753.80
650 Supplies & Fees – Technology Related				468.12
<b>Total Supplies</b>				<b>\$16,165.41</b>
<b>800 Other Objects</b>				
810 Dues and Fees				17,357.00
<b>Total Other Objects</b>				<b>\$17,357.00</b>
<b>Total 2360 Office of the Superintendent / Executive Director Services</b>	<b>\$785.08</b>	<b>\$724.68</b>		<b>\$883,784.60</b>

General Fund (10)

	<u>Elementary</u>	<u>Secondary</u>	<u>Federal</u>	<u>Total</u>
<b>2370 Community Relations Services</b>				
<b>100 Personnel Services – Salaries</b>				
100 Personnel Services – Salaries				102,289.76
<b>Total Personnel Services – Salaries</b>				<b>\$102,289.76</b>
<b>200 Personnel Services – Employee Benefits</b>				
210 Group Insurance – Contracted Provider				227.88
220 Social Security Contributions				7,710.23
230 PSERS Retirement Contributions				33,861.26
250 Unemployment Compensation				6.95
260 Workers' Compensation				451.48
270 Group Insurance – Self-Insurance				8,405.11
<b>Total Personnel Services – Employee Benefits</b>				<b>\$50,662.91</b>
<b>300 Purchased Professional and Technical Services</b>				
340 Technical Services				4,500.00
<b>Total Purchased Professional and Technical Services</b>				<b>\$4,500.00</b>
<b>500 Other Purchased Services</b>				
530 Communications				942.06
550 Printing and Binding				2,186.11
580 Travel				356.38
<b>Total Other Purchased Services</b>				<b>\$3,484.55</b>
<b>600 Supplies</b>				
610 General Supplies				6,371.32
650 Supplies & Fees – Technology Related				9,021.88
<b>Total Supplies</b>				<b>\$15,393.20</b>
<b>800 Other Objects</b>				
810 Dues and Fees				569.00
<b>Total Other Objects</b>				<b>\$569.00</b>
<b>Total 2370 Community Relations Services</b>				<b>\$176,899.42</b>

**General Fund (10)**

	<u>Elementary</u>	<u>Secondary</u>	<u>Federal</u>	<u>Total</u>
<b>2380 Office of the Principal Services</b>				
<b>100 Personnel Services – Salaries</b>				
100 Personnel Services – Salaries	1,748,847.51	1,792,332.50		3,541,180.01
<b>Total Personnel Services – Salaries</b>	<b>\$1,748,847.51</b>	<b>\$1,792,332.50</b>		<b>\$3,541,180.01</b>
<b>200 Personnel Services – Employee Benefits</b>				
210 Group Insurance – Contracted Provider	2,652.01	3,301.45		5,953.46
220 Social Security Contributions	130,023.33	133,737.98		263,761.31
230 PSERS Retirement Contributions	578,164.38	584,711.49		1,162,875.87
250 Unemployment Compensation	83.43	83.42		166.85
260 Workers' Compensation	6,353.07	6,386.66		12,739.73
270 Group Insurance – Self-Insurance	355,033.22	294,792.48		649,825.70
280 Other Post-Employment Benefits (OPEB)	2,721.94	2,512.56		5,234.50
291 Other Retirement Plans	3,459.50			3,459.50
<b>Total Personnel Services – Employee Benefits</b>	<b>\$1,078,490.88</b>	<b>\$1,025,526.04</b>		<b>\$2,104,016.92</b>
<b>300 Purchased Professional and Technical Services</b>				
329 Professional Educational Services – Other	22,812.50			22,812.50
330 Other Professional Services	778.00			778.00
<b>Total Purchased Professional and Technical Services</b>	<b>\$23,590.50</b>			<b>\$23,590.50</b>
<b>500 Other Purchased Services</b>				
530 Communications	5,046.72	5,906.91		10,953.63
550 Printing and Binding	150.04	27.48		177.52
580 Travel	1,060.01	7,102.90		8,162.91
<b>Total Other Purchased Services</b>	<b>\$6,256.77</b>	<b>\$13,037.29</b>		<b>\$19,294.06</b>
<b>600 Supplies</b>				
610 General Supplies	5,339.61	703.79		6,043.40
630 Food	97.99	968.89		1,066.88
640 Books and Periodicals	2,249.04			2,249.04
650 Supplies & Fees – Technology Related	628.85			628.85
<b>Total Supplies</b>	<b>\$8,315.49</b>	<b>\$1,672.68</b>		<b>\$9,988.17</b>
<b>800 Other Objects</b>				
810 Dues and Fees	3,687.00	6,449.00		10,136.00
<b>Total Other Objects</b>	<b>\$3,687.00</b>	<b>\$6,449.00</b>		<b>\$10,136.00</b>
<b>Total 2380 Office of the Principal Services</b>	<b>\$2,869,188.15</b>	<b>\$2,839,017.51</b>		<b>\$5,708,205.66</b>

General Fund (10)

	<u>Elementary</u>	<u>Secondary</u>	<u>Federal</u>	<u>Total</u>
<b>2390 Other Administration Services</b>				
<b>300 <u>Purchased Professional and Technical Services</u></b>				
330 Other Professional Services				500.00
350 Security / Safety Services				1,886.00
<b>Total Purchased Professional and Technical Services</b>				<b>\$2,386.00</b>
<b>400 <u>Purchased Property Services</u></b>				
440 Rentals				915.00
<b>Total Purchased Property Services</b>				<b>\$915.00</b>
<b>500 <u>Other Purchased Services</u></b>				
550 Printing and Binding				4,269.42
580 Travel				308.49
<b>Total Other Purchased Services</b>				<b>\$4,577.91</b>
<b>600 <u>Supplies</u></b>				
610 General Supplies				26,690.56
630 Food				3,363.55
<b>Total Supplies</b>				<b>\$30,054.11</b>
<b>800 <u>Other Objects</u></b>				
810 Dues and Fees				2,155.01
<b>Total Other Objects</b>				<b>\$2,155.01</b>
<b>Total 2390 Other Administration Services</b>				<b>\$40,088.03</b>

**General Fund (10)**

	<u>Elementary</u>	<u>Secondary</u>	<u>Federal</u>	<u>Total</u>
<b>2400 Support Services – Pupil Health</b>				
<b>100 Personnel Services – Salaries</b>				
100 Personnel Services – Salaries				755,691.53
<b>Total Personnel Services – Salaries</b>				<b>\$755,691.53</b>
<b>200 Personnel Services – Employee Benefits</b>				
210 Group Insurance – Contracted Provider				842.65
220 Social Security Contributions				56,990.76
230 PSERS Retirement Contributions				260,972.62
250 Unemployment Compensation				52.18
260 Workers' Compensation				2,802.91
270 Group Insurance – Self-Insurance				267,672.52
291 Other Retirement Plans				9,562.50
<b>Total Personnel Services – Employee Benefits</b>				<b>\$598,896.14</b>
<b>300 Purchased Professional and Technical Services</b>				
322 Professional Educational Services – Ius				27,986.67
329 Professional Educational Services – Other				40,169.70
330 Other Professional Services			14,019.25	1,188,441.62
<b>Total Purchased Professional and Technical Services</b>			<b>\$14,019.25</b>	<b>\$1,256,597.99</b>
<b>600 Supplies</b>				
610 General Supplies			4,174.26	17,009.56
630 Food				322.96
<b>Total Supplies</b>			<b>\$4,174.26</b>	<b>\$17,332.52</b>
<b>Total 2400 Support Services – Pupil Health</b>			<b>\$18,193.51</b>	<b>\$2,628,518.18</b>

General Fund (10)

2420 Medical Services

Elementary

Secondary

Federal

Total

300 Purchased Professional and Technical Services

322 Professional Educational Services – Ius

27,986.67

330 Other Professional Services

851,082.25

**Total Purchased Professional and Technical Services**

**\$879,068.92**

600 Supplies

610 General Supplies

4,174.26

4,234.23

**Total Supplies**

**\$4,174.26**

**\$4,234.23**

**Total 2420 Medical Services**

**\$4,174.26**

**\$883,303.15**

**General Fund (10)**

**2430 Dental Services**

Elementary

Secondary

Federal

Total

**300 Purchased Professional and Technical Services**

330 Other Professional Services

1,195.00

**Total Purchased Professional and Technical Services**

**\$1,195.00**

**600 Supplies**

610 General Supplies

926.28

**Total Supplies**

**\$926.28**

**Total 2430 Dental Services**

**\$2,121.28**

**General Fund (10)**

**2440 Nursing Services**

	<u>Elementary</u>	<u>Secondary</u>	<u>Federal</u>	<u>Total</u>
<b>100 Personnel Services – Salaries</b>				
100 Personnel Services – Salaries				718,002.02
<b>Total Personnel Services – Salaries</b>				<b>\$718,002.02</b>
<b>200 Personnel Services – Employee Benefits</b>				
210 Group Insurance – Contracted Provider				809.75
220 Social Security Contributions				54,072.43
230 PSERS Retirement Contributions				247,468.62
250 Unemployment Compensation				48.70
260 Workers' Compensation				2,665.23
270 Group Insurance – Self-Insurance				255,990.73
291 Other Retirement Plans				9,562.50
<b>Total Personnel Services – Employee Benefits</b>				<b>\$570,617.96</b>
<b>300 Purchased Professional and Technical Services</b>				
329 Professional Educational Services – Other				27,436.15
330 Other Professional Services			14,019.25	329,229.37
<b>Total Purchased Professional and Technical Services</b>			<b>\$14,019.25</b>	<b>\$356,665.52</b>
<b>600 Supplies</b>				
610 General Supplies				11,732.36
<b>Total Supplies</b>				<b>\$11,732.36</b>
<b>Total 2440 Nursing Services</b>			<b>\$14,019.25</b>	<b>\$1,657,017.86</b>

General Fund (10)

2450 Nonpublic Health Services

Elementary

Secondary

Federal

Total

100 Personnel Services – Salaries

100 Personnel Services – Salaries

25,907.51

**Total Personnel Services – Salaries**

**\$25,907.51**

200 Personnel Services – Employee Benefits

210 Group Insurance – Contracted Provider

32.90

220 Social Security Contributions

2,041.07

230 PSERS Retirement Contributions

9,565.26

250 Unemployment Compensation

3.48

260 Workers' Compensation

137.68

270 Group Insurance – Self-Insurance

11,681.79

**Total Personnel Services – Employee Benefits**

**\$23,462.18**

300 Purchased Professional and Technical Services

329 Professional Educational Services – Other

1,733.55

**Total Purchased Professional and Technical Services**

**\$1,733.55**

**Total 2450 Nonpublic Health Services**

**\$51,103.24**

General Fund (10)

2490 Other Health Services

Elementary

Secondary

Federal

Total

100 Personnel Services – Salaries

100 Personnel Services – Salaries

11,782.00

**Total Personnel Services – Salaries**

**\$11,782.00**

200 Personnel Services – Employee Benefits

220 Social Security Contributions

877.26

230 PSERS Retirement Contributions

3,938.74

**Total Personnel Services – Employee Benefits**

**\$4,816.00**

300 Purchased Professional and Technical Services

329 Professional Educational Services – Other

11,000.00

330 Other Professional Services

6,935.00

**Total Purchased Professional and Technical Services**

**\$17,935.00**

600 Supplies

610 General Supplies

116.69

630 Food

322.96

**Total Supplies**

**\$439.65**

**Total 2490 Other Health Services**

**\$34,972.65**

**General Fund (10)**

	<u>Elementary</u>	<u>Secondary</u>	<u>Federal</u>	<u>Total</u>
<b>2500 Support Services – Business</b>				
<b>100 Personnel Services – Salaries</b>				
100 Personnel Services – Salaries			45,220.83	654,845.16
<b>Total Personnel Services – Salaries</b>			<b>\$45,220.83</b>	<b>\$654,845.16</b>
<b>200 Personnel Services – Employee Benefits</b>				
210 Group Insurance – Contracted Provider			56.40	1,077.76
220 Social Security Contributions			1,698.15	48,066.24
230 PSERS Retirement Contributions			7,558.70	229,896.04
250 Unemployment Compensation				38.26
260 Workers' Compensation				2,155.30
270 Group Insurance – Self-Insurance			8,945.28	155,474.88
<b>Total Personnel Services – Employee Benefits</b>			<b>\$18,258.53</b>	<b>\$436,708.48</b>
<b>300 Purchased Professional and Technical Services</b>				
390 Other Purchased Professional and Technical Services				835.78
<b>Total Purchased Professional and Technical Services</b>				<b>\$835.78</b>
<b>400 Purchased Property Services</b>				
430 Repairs and Maintenance Services				4,654.76
440 Rentals				15,390.93
<b>Total Purchased Property Services</b>				<b>\$20,045.69</b>
<b>500 Other Purchased Services</b>				
530 Communications				24,214.78
549 Other Advertising/Public Relations				1,012.19
550 Printing and Binding				1,425.21
580 Travel			37.48	586.67
<b>Total Other Purchased Services</b>			<b>\$37.48</b>	<b>\$27,238.85</b>
<b>600 Supplies</b>				
610 General Supplies				4,519.78
650 Supplies & Fees – Technology Related				6,710.41
<b>Total Supplies</b>				<b>\$11,230.19</b>
<b>800 Other Objects</b>				
810 Dues and Fees				9,119.21
890 Miscellaneous Expenditures				15,624.77
<b>Total Other Objects</b>				<b>\$24,743.98</b>
<b>Total 2500 Support Services – Business</b>			<b>\$63,516.84</b>	<b>\$1,175,648.13</b>

**General Fund (10)**

	<u>Elementary</u>	<u>Secondary</u>	<u>Federal</u>	<u>Total</u>
<b>2510 Fiscal Services</b>				
<b>100 Personnel Services – Salaries</b>				
100 Personnel Services – Salaries			45,220.83	613,529.72
<b>Total Personnel Services – Salaries</b>			<b>\$45,220.83</b>	<b>\$613,529.72</b>
<b>200 Personnel Services – Employee Benefits</b>				
210 Group Insurance – Contracted Provider			56.40	996.66
220 Social Security Contributions			1,698.15	44,920.62
230 PSERS Retirement Contributions			7,558.70	216,587.89
250 Unemployment Compensation				34.78
260 Workers' Compensation				2,061.30
270 Group Insurance – Self-Insurance			8,945.28	149,434.97
<b>Total Personnel Services – Employee Benefits</b>			<b>\$18,258.53</b>	<b>\$414,036.22</b>
<b>400 Purchased Property Services</b>				
430 Repairs and Maintenance Services				395.00
<b>Total Purchased Property Services</b>				<b>\$395.00</b>
<b>500 Other Purchased Services</b>				
530 Communications				1,843.70
549 Other Advertising/Public Relations				521.45
550 Printing and Binding				364.00
580 Travel			37.48	586.67
<b>Total Other Purchased Services</b>			<b>\$37.48</b>	<b>\$3,315.82</b>
<b>600 Supplies</b>				
610 General Supplies				1,978.62
650 Supplies & Fees – Technology Related				36.01
<b>Total Supplies</b>				<b>\$2,014.63</b>
<b>800 Other Objects</b>				
810 Dues and Fees				5,093.70
<b>Total Other Objects</b>				<b>\$5,093.70</b>
<b>Total 2510 Fiscal Services</b>			<b>\$63,516.84</b>	<b>\$1,038,385.09</b>

General Fund (10)

2511 Supervision of Fiscal Services - Head of Component

Elementary                      Secondary                      Federal                      Total

100 Personnel Services – Salaries

100 Personnel Services – Salaries 157,383.02

**Total Personnel Services – Salaries \$157,383.02**

200 Personnel Services – Employee Benefits

210 Group Insurance – Contracted Provider 282.00

220 Social Security Contributions 10,784.17

230 PSERS Retirement Contributions 51,944.62

250 Unemployment Compensation 3.48

260 Workers' Compensation 545.96

270 Group Insurance – Self-Insurance 20,208.22

**Total Personnel Services – Employee Benefits \$83,768.45**

500 Other Purchased Services

530 Communications 723.90

580 Travel 143.19

**Total Other Purchased Services \$867.09**

800 Other Objects

810 Dues and Fees 525.00

**Total Other Objects \$525.00**

**Total 2511 Supervision of Fiscal Services - Head of Component \$242,543.56**

General Fund (10)

2512 Budgeting Services

Elementary                      Secondary                      Federal                      Total

**100 Personnel Services – Salaries**  
100 Personnel Services – Salaries 50,190.22

**Total Personnel Services – Salaries \$50,190.22**

**200 Personnel Services – Employee Benefits**  
210 Group Insurance – Contracted Provider 106.08  
220 Social Security Contributions 3,792.42  
230 PSERS Retirement Contributions 16,110.12  
250 Unemployment Compensation 1.74  
260 Workers' Compensation 169.96  
270 Group Insurance – Self-Insurance 9,417.29

**Total Personnel Services – Employee Benefits \$29,597.61**

**500 Other Purchased Services**  
530 Communications 559.87  
549 Other Advertising/Public Relations 521.45

**Total Other Purchased Services \$1,081.32**

**800 Other Objects**  
810 Dues and Fees 125.00

**Total Other Objects \$125.00**

**Total 2512 Budgeting Services \$80,994.15**

General Fund (10)

2513 Receiving and Disbursing Funds Services

Elementary

Secondary

Federal

Total

100 Personnel Services – Salaries

100 Personnel Services – Salaries

81,151.77

**Total Personnel Services – Salaries**

**\$81,151.77**

200 Personnel Services – Employee Benefits

210 Group Insurance – Contracted Provider

108.10

220 Social Security Contributions

5,801.32

230 PSERS Retirement Contributions

27,123.31

250 Unemployment Compensation

6.95

260 Workers' Compensation

262.54

270 Group Insurance – Self-Insurance

39,319.62

**Total Personnel Services – Employee Benefits**

**\$72,621.84**

400 Purchased Property Services

430 Repairs and Maintenance Services

395.00

**Total Purchased Property Services**

**\$395.00**

500 Other Purchased Services

550 Printing and Binding

364.00

580 Travel

273.89

**Total Other Purchased Services**

**\$637.89**

600 Supplies

610 General Supplies

1,334.73

650 Supplies & Fees – Technology Related

36.01

**Total Supplies**

**\$1,370.74**

**Total 2513 Receiving and Disbursing Funds Services**

**\$156,177.24**



General Fund (10)

2515 Financial Accounting Services

Elementary

Secondary

Federal

Total

100 Personnel Services – Salaries

100 Personnel Services – Salaries

66,625.87

**Total Personnel Services – Salaries**

**\$66,625.87**

200 Personnel Services – Employee Benefits

210 Group Insurance – Contracted Provider

120.72

220 Social Security Contributions

5,061.80

230 PSERS Retirement Contributions

22,272.64

250 Unemployment Compensation

3.48

260 Workers' Compensation

277.20

270 Group Insurance – Self-Insurance

8,405.11

**Total Personnel Services – Employee Benefits**

**\$36,140.95**

500 Other Purchased Services

580 Travel

93.54

**Total Other Purchased Services**

**\$93.54**

600 Supplies

610 General Supplies

132.82

**Total Supplies**

**\$132.82**

800 Other Objects

810 Dues and Fees

175.50

**Total Other Objects**

**\$175.50**

**Total 2515 Financial Accounting Services**

**\$103,168.68**

General Fund (10)

2516 Internal Auditing Services

Elementary

Secondary

Federal

Total

100 Personnel Services – Salaries

100 Personnel Services – Salaries

48,189.96

**Total Personnel Services – Salaries**

**\$48,189.96**

200 Personnel Services – Employee Benefits

210 Group Insurance – Contracted Provider

105.96

220 Social Security Contributions

3,625.11

230 PSERS Retirement Contributions

16,109.86

250 Unemployment Compensation

1.74

260 Workers' Compensation

169.96

270 Group Insurance – Self-Insurance

9,417.05

**Total Personnel Services – Employee Benefits**

**\$29,429.68**

500 Other Purchased Services

530 Communications

559.93

**Total Other Purchased Services**

**\$559.93**

800 Other Objects

810 Dues and Fees

125.00

**Total Other Objects**

**\$125.00**

**Total 2516 Internal Auditing Services**

**\$78,304.57**

General Fund (10)

2517 Property Accounting Services

Elementary

Secondary

Federal

Total

100 Personnel Services – Salaries

100 Personnel Services – Salaries

14,592.46

**Total Personnel Services – Salaries**

**\$14,592.46**

200 Personnel Services – Employee Benefits

210 Group Insurance – Contracted Provider

24.70

220 Social Security Contributions

1,102.09

230 PSERS Retirement Contributions

4,537.52

250 Unemployment Compensation

3.48

260 Workers' Compensation

185.15

270 Group Insurance – Self-Insurance

6,040.04

**Total Personnel Services – Employee Benefits**

**\$11,892.98**

**Total 2517 Property Accounting Services**

**\$26,485.44**



General Fund (10)

2520 Purchasing Services

Elementary

Secondary

Federal

Total

100 Personnel Services – Salaries

100 Personnel Services – Salaries

12,900.04

**Total Personnel Services – Salaries**

**\$12,900.04**

200 Personnel Services – Employee Benefits

210 Group Insurance – Contracted Provider

24.70

220 Social Security Contributions

971.84

230 PSERS Retirement Contributions

4,312.48

270 Group Insurance – Self-Insurance

6,039.91

**Total Personnel Services – Employee Benefits**

**\$11,348.93**

500 Other Purchased Services

549 Other Advertising/Public Relations

490.74

**Total Other Purchased Services**

**\$490.74**

**Total 2520 Purchasing Services**

**\$24,739.71**

General Fund (10)

2530 Warehousing and Distributing Services

Elementary

Secondary

Federal

Total

100 Personnel Services – Salaries

100 Personnel Services – Salaries

26,223.83

**Total Personnel Services – Salaries**

**\$26,223.83**

200 Personnel Services – Employee Benefits

210 Group Insurance – Contracted Provider

56.40

220 Social Security Contributions

2,006.18

230 PSERS Retirement Contributions

8,764.46

250 Unemployment Compensation

3.48

260 Workers' Compensation

94.00

**Total Personnel Services – Employee Benefits**

**\$10,924.52**

400 Purchased Property Services

430 Repairs and Maintenance Services

120.00

**Total Purchased Property Services**

**\$120.00**

500 Other Purchased Services

530 Communications

667.02

**Total Other Purchased Services**

**\$667.02**

600 Supplies

610 General Supplies

497.28

**Total Supplies**

**\$497.28**

**Total 2530 Warehousing and Distributing Services**

**\$38,432.65**

General Fund (10)

2540 Printing, Publishing and Duplicating Services

Elementary

Secondary

Federal

Total

100 Personnel Services – Salaries

100 Personnel Services – Salaries

2,191.57

**Total Personnel Services – Salaries**

**\$2,191.57**

200 Personnel Services – Employee Benefits

220 Social Security Contributions

167.60

230 PSERS Retirement Contributions

231.21

**Total Personnel Services – Employee Benefits**

**\$398.81**

600 Supplies

610 General Supplies

4,936.73

650 Supplies & Fees – Technology Related

6,674.40

**Total Supplies**

**\$11,611.13**

800 Other Objects

810 Dues and Fees

3,125.12

**Total Other Objects**

**\$3,125.12**

**Total 2540 Printing, Publishing and Duplicating Services**

**\$17,326.63**

General Fund (10)

2590 Other Support Services – Business

Elementary

Secondary

Federal

Total

300 Purchased Professional and Technical Services

390 Other Purchased Professional and Technical Services

835.78

**Total Purchased Professional and Technical Services**

**\$835.78**

400 Purchased Property Services

430 Repairs and Maintenance Services

4,139.76

440 Rentals

15,390.93

**Total Purchased Property Services**

**\$19,530.69**

500 Other Purchased Services

530 Communications

21,704.06

550 Printing and Binding

1,061.21

**Total Other Purchased Services**

**\$22,765.27**

600 Supplies

610 General Supplies

(2,892.85)

**Total Supplies**

**(\$2,892.85)**

800 Other Objects

810 Dues and Fees

900.39

890 Miscellaneous Expenditures

15,624.77

**Total Other Objects**

**\$16,525.16**

**Total 2590 Other Support Services – Business**

**\$56,764.05**

General Fund (10)

2600 Operation and Maintenance of Plant Services

Elementary

Secondary

Federal

Total

100 Personnel Services – Salaries

100 Personnel Services – Salaries 2,978,291.82

Total Personnel Services – Salaries \$2,978,291.82

200 Personnel Services – Employee Benefits

210 Group Insurance – Contracted Provider 3,035.00

220 Social Security Contributions 221,842.31

230 PSERS Retirement Contributions 996,820.47

250 Unemployment Compensation 177.31

260 Workers' Compensation 10,748.58

270 Group Insurance – Self-Insurance 788,484.68

291 Other Retirement Plans 2,293.50

Total Personnel Services – Employee Benefits \$2,023,401.85

300 Purchased Professional and Technical Services

330 Other Professional Services 71,894.48

350 Security / Safety Services 22,976.00

Total Purchased Professional and Technical Services \$94,870.48

400 Purchased Property Services

410 Cleaning Services 2,227,908.22

420 Utility Services 257,054.42

430 Repairs and Maintenance Services 489,707.07

440 Rentals 13,535.86

450 Construction Services 24,611.00

460 Extermination Services 5,424.00

490 Other Purchased Property Services 307.94

Total Purchased Property Services \$3,018,548.51

500 Other Purchased Services

522 Automotive Liability Insurance 55,233.00

523 General Property and Liability Insurance 280,725.00

530 Communications 29,630.95

549 Other Advertising/Public Relations 659.21

550 Printing and Binding 936.34

580 Travel 2,035.94

Total Other Purchased Services \$369,220.44

600 Supplies

610 General Supplies 402,943.16 410,581.04 813,524.20

620 Energy 1,609,889.08

630 Food 56.34

650 Supplies & Fees – Technology Related 5,235.33

Total Supplies \$402,943.16 \$410,581.04 \$2,428,704.95

700 Property

752 Capital Equipment – Original and Additional 121,835.24

758 Capitalized Technology Software - Original 12,364.00

762 Capitalized Equipment - Replacement 79,854.94

General Fund (10)

2600 Operation and Maintenance of Plant Services

Elementary

Secondary

Federal

Total

Total Property				\$214,054.18
----------------	--	--	--	--------------

800 Other Objects

810 Dues and Fees

1,229.50

Total Other Objects				\$1,229.50
---------------------	--	--	--	------------

Total 2600 Operation and Maintenance of Plant Services	\$402,943.16	\$410,581.04		\$11,128,321.73
--	--------------	--------------	--	-----------------

General Fund (10)

	<u>Elementary</u>	<u>Secondary</u>	<u>Federal</u>	<u>Total</u>
<b>2610 Supervision of Operation and Maintenance of Plant Services</b>				
<b>100 Personnel Services – Salaries</b>				
100 Personnel Services – Salaries				268,340.17
<b>Total Personnel Services – Salaries</b>				<b>\$268,340.17</b>
<b>200 Personnel Services – Employee Benefits</b>				
210 Group Insurance – Contracted Provider				426.50
220 Social Security Contributions				20,361.52
230 PSERS Retirement Contributions				88,034.74
250 Unemployment Compensation				10.43
260 Workers' Compensation				973.23
270 Group Insurance – Self-Insurance				21,515.86
<b>Total Personnel Services – Employee Benefits</b>				<b>\$131,322.28</b>
<b>500 Other Purchased Services</b>				
530 Communications				698.99
550 Printing and Binding				13.48
<b>Total Other Purchased Services</b>				<b>\$712.47</b>
<b>700 Property</b>				
758 Capitalized Technology Software - Original				12,364.00
<b>Total Property</b>				<b>\$12,364.00</b>
<b>800 Other Objects</b>				
810 Dues and Fees				120.00
<b>Total Other Objects</b>				<b>\$120.00</b>
<b>Total 2610 Supervision of Operation and Maintenance of Plant Services</b>				<b>\$412,858.92</b>

General Fund (10)

2611 Supervision of Operation and Maintenance of Plant Services – Head of Component

Elementary

Secondary

Federal

Total

100 Personnel Services – Salaries

100 Personnel Services – Salaries

172,420.89

**Total Personnel Services – Salaries**

**\$172,420.89**

200 Personnel Services – Employee Benefits

210 Group Insurance – Contracted Provider

218.90

220 Social Security Contributions

13,228.87

230 PSERS Retirement Contributions

56,637.40

250 Unemployment Compensation

6.95

260 Workers' Compensation

640.43

270 Group Insurance – Self-Insurance

2,441.16

**Total Personnel Services – Employee Benefits**

**\$73,173.71**

500 Other Purchased Services

530 Communications

310.51

550 Printing and Binding

13.48

**Total Other Purchased Services**

**\$323.99**

800 Other Objects

810 Dues and Fees

120.00

**Total Other Objects**

**\$120.00**

**Total 2611 Supervision of Operation and Maintenance of Plant Services – Head of Component**

**\$246,038.59**

**General Fund (10)**

**2619 Supervision of Operation and Maintenance of Plant Services – All Other Supervision**

Elementary

Secondary

Federal

Total

**100 Personnel Services – Salaries**

100 Personnel Services – Salaries 95,919.28

**Total Personnel Services – Salaries \$95,919.28**

**200 Personnel Services – Employee Benefits**

210 Group Insurance – Contracted Provider 207.60

220 Social Security Contributions 7,132.65

230 PSERS Retirement Contributions 31,397.34

250 Unemployment Compensation 3.48

260 Workers' Compensation 332.80

270 Group Insurance – Self-Insurance 19,074.70

**Total Personnel Services – Employee Benefits \$58,148.57**

**500 Other Purchased Services**

530 Communications 388.48

**Total Other Purchased Services \$388.48**

**700 Property**

758 Capitalized Technology Software - Original 12,364.00

**Total Property \$12,364.00**

**Total 2619 Supervision of Operation and Maintenance of Plant Services – All Other Supervision \$166,820.33**

**General Fund (10)**

	<u>Elementary</u>	<u>Secondary</u>	<u>Federal</u>	<u>Total</u>
<b>2620 Operation of Buildings Services</b>				
<b>100 Personnel Services – Salaries</b>				
100 Personnel Services – Salaries				1,954,072.30
<b>Total Personnel Services – Salaries</b>				<b>\$1,954,072.30</b>
<b>200 Personnel Services – Employee Benefits</b>				
210 Group Insurance – Contracted Provider				1,974.00
220 Social Security Contributions				144,555.42
230 PSERS Retirement Contributions				655,501.17
250 Unemployment Compensation				128.63
260 Workers' Compensation				7,234.02
270 Group Insurance – Self-Insurance				579,454.46
291 Other Retirement Plans				2,293.50
<b>Total Personnel Services – Employee Benefits</b>				<b>\$1,391,141.20</b>
<b>300 Purchased Professional and Technical Services</b>				
330 Other Professional Services				64,480.63
<b>Total Purchased Professional and Technical Services</b>				<b>\$64,480.63</b>
<b>400 Purchased Property Services</b>				
410 Cleaning Services				2,123,908.84
420 Utility Services				257,054.42
430 Repairs and Maintenance Services				416,574.79
440 Rentals				12,729.61
460 Extermination Services				5,424.00
490 Other Purchased Property Services				307.94
<b>Total Purchased Property Services</b>				<b>\$2,815,999.60</b>
<b>500 Other Purchased Services</b>				
523 General Property and Liability Insurance				276,600.00
530 Communications				14,842.28
549 Other Advertising/Public Relations				659.21
550 Printing and Binding				325.15
<b>Total Other Purchased Services</b>				<b>\$292,426.64</b>
<b>600 Supplies</b>				
610 General Supplies	306,815.73	345,033.13		651,848.86
620 Energy				1,573,690.25
650 Supplies & Fees – Technology Related				676.20
<b>Total Supplies</b>	<b>\$306,815.73</b>	<b>\$345,033.13</b>		<b>\$2,226,215.31</b>
<b>700 Property</b>				
752 Capital Equipment – Original and Additional				73,700.71
762 Capitalized Equipment - Replacement				79,854.94
<b>Total Property</b>				<b>\$153,555.65</b>
<b>800 Other Objects</b>				
810 Dues and Fees				574.50
<b>Total Other Objects</b>				<b>\$574.50</b>
<b>Total 2620 Operation of Buildings Services</b>	<b>\$306,815.73</b>	<b>\$345,033.13</b>		<b>\$8,898,465.83</b>

**General Fund (10)**

	<u>Elementary</u>	<u>Secondary</u>	<u>Federal</u>	<u>Total</u>
<b>2630 Care and Upkeep of Grounds Services</b>				
<b>100 Personnel Services – Salaries</b>				
100 Personnel Services – Salaries				301,607.57
<b>Total Personnel Services – Salaries</b>				<b>\$301,607.57</b>
<b>200 Personnel Services – Employee Benefits</b>				
210 Group Insurance – Contracted Provider				282.00
220 Social Security Contributions				22,497.12
230 PSERS Retirement Contributions				100,451.52
250 Unemployment Compensation				17.38
260 Workers' Compensation				949.97
270 Group Insurance – Self-Insurance				93,852.78
<b>Total Personnel Services – Employee Benefits</b>				<b>\$218,050.77</b>
<b>300 Purchased Professional and Technical Services</b>				
330 Other Professional Services				3,775.00
<b>Total Purchased Professional and Technical Services</b>				<b>\$3,775.00</b>
<b>400 Purchased Property Services</b>				
410 Cleaning Services				103,999.38
430 Repairs and Maintenance Services				2,380.00
450 Construction Services				24,611.00
<b>Total Purchased Property Services</b>				<b>\$130,990.38</b>
<b>500 Other Purchased Services</b>				
530 Communications				9,095.74
<b>Total Other Purchased Services</b>				<b>\$9,095.74</b>
<b>600 Supplies</b>				
610 General Supplies	51,998.83	28,086.74		80,085.57
<b>Total Supplies</b>	<b>\$51,998.83</b>	<b>\$28,086.74</b>		<b>\$80,085.57</b>
<b>800 Other Objects</b>				
810 Dues and Fees				35.00
<b>Total Other Objects</b>				<b>\$35.00</b>
<b>Total 2630 Care and Upkeep of Grounds Services</b>	<b>\$51,998.83</b>	<b>\$28,086.74</b>		<b>\$743,640.03</b>



**General Fund (10)**

	<u>Elementary</u>	<u>Secondary</u>	<u>Federal</u>	<u>Total</u>
<b>2650 Vehicle Operation and Maintenance Services (Other Than Student Transportation Vehicles)</b>				
<b>100 Personnel Services – Salaries</b>				
100 Personnel Services – Salaries				64,754.36
<b>Total Personnel Services – Salaries</b>				<b>\$64,754.36</b>
<b>200 Personnel Services – Employee Benefits</b>				
210 Group Insurance – Contracted Provider				56.40
220 Social Security Contributions				4,801.09
230 PSERS Retirement Contributions				21,572.19
250 Unemployment Compensation				3.48
260 Workers' Compensation				225.98
270 Group Insurance – Self-Insurance				21,969.28
<b>Total Personnel Services – Employee Benefits</b>				<b>\$48,628.42</b>
<b>400 Purchased Property Services</b>				
430 Repairs and Maintenance Services				43,740.49
<b>Total Purchased Property Services</b>				<b>\$43,740.49</b>
<b>500 Other Purchased Services</b>				
522 Automotive Liability Insurance				55,233.00
530 Communications				577.30
<b>Total Other Purchased Services</b>				<b>\$55,810.30</b>
<b>600 Supplies</b>				
610 General Supplies	5,756.59	4,871.10		10,627.69
620 Energy				31,921.02
<b>Total Supplies</b>	<b>\$5,756.59</b>	<b>\$4,871.10</b>		<b>\$42,548.71</b>
<b>Total 2650 Vehicle Operation and Maintenance Services (Other Than Student Transportation Vehicles)</b>	<b>\$5,756.59</b>	<b>\$4,871.10</b>		<b>\$255,482.28</b>

**General Fund (10)**

	<u>Elementary</u>	<u>Secondary</u>	<u>Federal</u>	<u>Total</u>
<b>2660 Safety and Security Services</b>				
<b>100 Personnel Services – Salaries</b>				
100 Personnel Services – Salaries				254,911.70
<b>Total Personnel Services – Salaries</b>				<b>\$254,911.70</b>
<b>200 Personnel Services – Employee Benefits</b>				
210 Group Insurance – Contracted Provider				183.30
220 Social Security Contributions				19,539.60
230 PSERS Retirement Contributions				86,412.44
250 Unemployment Compensation				10.43
260 Workers' Compensation				905.82
270 Group Insurance – Self-Insurance				42,411.82
<b>Total Personnel Services – Employee Benefits</b>				<b>\$149,463.41</b>
<b>300 Purchased Professional and Technical Services</b>				
330 Other Professional Services				138.85
350 Security / Safety Services				22,976.00
<b>Total Purchased Professional and Technical Services</b>				<b>\$23,114.85</b>
<b>400 Purchased Property Services</b>				
430 Repairs and Maintenance Services				1,712.70
<b>Total Purchased Property Services</b>				<b>\$1,712.70</b>
<b>500 Other Purchased Services</b>				
523 General Property and Liability Insurance				4,125.00
530 Communications				3,073.03
550 Printing and Binding				597.71
580 Travel				2,035.94
<b>Total Other Purchased Services</b>				<b>\$9,831.68</b>
<b>600 Supplies</b>				
610 General Supplies	26,650.12	26,958.53		53,608.65
650 Supplies & Fees – Technology Related				4,559.13
<b>Total Supplies</b>	<b>\$26,650.12</b>	<b>\$26,958.53</b>		<b>\$58,167.78</b>
<b>700 Property</b>				
752 Capital Equipment – Original and Additional				36,267.63
<b>Total Property</b>				<b>\$36,267.63</b>
<b>800 Other Objects</b>				
810 Dues and Fees				500.00
<b>Total Other Objects</b>				<b>\$500.00</b>
<b>Total 2660 Safety and Security Services</b>	<b>\$26,650.12</b>	<b>\$26,958.53</b>		<b>\$533,969.75</b>

General Fund (10)

	<u>Elementary</u>	<u>Secondary</u>	<u>Federal</u>	<u>Total</u>
<b>2690 Other Operation and Maintenance of Plant Services</b>				
<b>100 Personnel Services – Salaries</b>				
100 Personnel Services – Salaries				65,874.58
<b>Total Personnel Services – Salaries</b>				<b>\$65,874.58</b>
<b>200 Personnel Services – Employee Benefits</b>				
210 Group Insurance – Contracted Provider				56.40
220 Social Security Contributions				4,976.17
230 PSERS Retirement Contributions				21,946.73
250 Unemployment Compensation				3.48
260 Workers' Compensation				228.83
270 Group Insurance – Self-Insurance				8,875.12
<b>Total Personnel Services – Employee Benefits</b>				<b>\$36,086.73</b>
<b>500 Other Purchased Services</b>				
530 Communications				766.31
<b>Total Other Purchased Services</b>				<b>\$766.31</b>
<b>600 Supplies</b>				
630 Food				56.34
<b>Total Supplies</b>				<b>\$56.34</b>
<b>Total 2690 Other Operation and Maintenance of Plant Services</b>				<b>\$102,783.96</b>

General Fund (10)

	<u>Elementary</u>	<u>Secondary</u>	<u>Federal</u>	<u>Total</u>
<b>2700 Student Transportation Services</b>				
<b>100 Personnel Services – Salaries</b>				
100 Personnel Services – Salaries				133,131.59
<b>Total Personnel Services – Salaries</b>				<b>\$133,131.59</b>
<b>200 Personnel Services – Employee Benefits</b>				
210 Group Insurance – Contracted Provider				242.64
220 Social Security Contributions				9,829.60
230 PSERS Retirement Contributions				43,837.29
250 Unemployment Compensation				6.95
260 Workers' Compensation				452.91
270 Group Insurance – Self-Insurance				39,480.07
<b>Total Personnel Services – Employee Benefits</b>				<b>\$93,849.46</b>
<b>400 Purchased Property Services</b>				
430 Repairs and Maintenance Services				3,751.40
440 Rentals				3,600.00
<b>Total Purchased Property Services</b>				<b>\$7,351.40</b>
<b>500 Other Purchased Services</b>				
511 Student Transportation Services from Another LEA Within the State				2,040.00
513 Contracted Carriers				7,164,226.26
516 Student Transportation Services From the IU				289,895.02
519 Student Transportation Services From Other Sources				11,742.00
530 Communications				508.22
<b>Total Other Purchased Services</b>				<b>\$7,468,411.50</b>
<b>600 Supplies</b>				
610 General Supplies				4.24
620 Energy				5,435.90
650 Supplies & Fees – Technology Related				5,583.39
<b>Total Supplies</b>				<b>\$11,023.53</b>
<b>800 Other Objects</b>				
810 Dues and Fees				242.00
<b>Total Other Objects</b>				<b>\$242.00</b>
<b>Total 2700 Student Transportation Services</b>				<b>\$7,714,009.48</b>

General Fund (10)

2710 Supervision of Student Transportation Services

Elementary

Secondary

Federal

Total

100 Personnel Services – Salaries

100 Personnel Services – Salaries

133,131.59

**Total Personnel Services – Salaries**

**\$133,131.59**

200 Personnel Services – Employee Benefits

210 Group Insurance – Contracted Provider

242.64

220 Social Security Contributions

9,829.60

230 PSERS Retirement Contributions

43,837.29

250 Unemployment Compensation

6.95

260 Workers' Compensation

452.91

270 Group Insurance – Self-Insurance

39,480.07

**Total Personnel Services – Employee Benefits**

**\$93,849.46**

500 Other Purchased Services

530 Communications

219.95

**Total Other Purchased Services**

**\$219.95**

800 Other Objects

810 Dues and Fees

242.00

**Total Other Objects**

**\$242.00**

**Total 2710 Supervision of Student Transportation Services**

**\$227,443.00**

**General Fund (10)**

	<u>Elementary</u>	<u>Secondary</u>	<u>Federal</u>	<u>Total</u>
<b>2711 Supervision of Student Transportation Services – Head of Component</b>				
<b>100 Personnel Services – Salaries</b>				
100 Personnel Services – Salaries				133,131.59
<b>Total Personnel Services – Salaries</b>				<b>\$133,131.59</b>
<b>200 Personnel Services – Employee Benefits</b>				
210 Group Insurance – Contracted Provider				242.64
220 Social Security Contributions				9,829.60
230 PSERS Retirement Contributions				43,837.29
250 Unemployment Compensation				6.95
260 Workers' Compensation				452.91
270 Group Insurance – Self-Insurance				39,480.07
<b>Total Personnel Services – Employee Benefits</b>				<b>\$93,849.46</b>
<b>500 Other Purchased Services</b>				
530 Communications				219.95
<b>Total Other Purchased Services</b>				<b>\$219.95</b>
<b>800 Other Objects</b>				
810 Dues and Fees				242.00
<b>Total Other Objects</b>				<b>\$242.00</b>
<b>Total 2711 Supervision of Student Transportation Services – Head of Component</b>				<b>\$227,443.00</b>

General Fund (10)

	<u>Elementary</u>	<u>Secondary</u>	<u>Federal</u>	<u>Total</u>
<b>2720 Vehicle Operation Services</b>				
<b>400 <u>Purchased Property Services</u></b>				
440 Rentals				3,600.00
<b>Total Purchased Property Services</b>				<b>\$3,600.00</b>
<b>500 <u>Other Purchased Services</u></b>				
511 Student Transportation Services from Another LEA Within the State				2,040.00
513 Contracted Carriers				4,286,160.20
516 Student Transportation Services From the IU				289,895.02
530 Communications				288.27
<b>Total Other Purchased Services</b>				<b>\$4,578,383.49</b>
<b>600 <u>Supplies</u></b>				
650 Supplies & Fees – Technology Related				5,583.39
<b>Total Supplies</b>				<b>\$5,583.39</b>
<b>Total 2720 Vehicle Operation Services</b>				<b>\$4,587,566.88</b>

General Fund (10)

2740 Vehicle Servicing and Maintenance Services

Elementary

Secondary

Federal

Total

400 Purchased Property Services

430 Repairs and Maintenance Services

3,751.40

**Total Purchased Property Services**

**\$3,751.40**

500 Other Purchased Services

513 Contracted Carriers

460,617.55

**Total Other Purchased Services**

**\$460,617.55**

600 Supplies

610 General Supplies

4.24

620 Energy

5,435.90

**Total Supplies**

**\$5,440.14**

**Total 2740 Vehicle Servicing and Maintenance Services**

**\$469,809.09**

General Fund (10)

2750 Nonpublic Transportation

Elementary

Secondary

Federal

Total

500 Other Purchased Services

513 Contracted Carriers

2,410,239.24

519 Student Transportation Services From Other Sources

11,742.00

**Total Other Purchased Services**

**\$2,421,981.24**

**Total 2750 Nonpublic Transportation**

**\$2,421,981.24**

General Fund (10)

2790 Other Student Transportation Services

Elementary

Secondary

Federal

Total

500 Other Purchased Services

513 Contracted Carriers

7,209.27

**Total Other Purchased Services**

**\$7,209.27**

**Total 2790 Other Student Transportation Services**

**\$7,209.27**

**General Fund (10)**

	<u>Elementary</u>	<u>Secondary</u>	<u>Federal</u>	<u>Total</u>
<b>2800 Support Services – Central</b>				
<b>100 Personnel Services – Salaries</b>				
100 Personnel Services – Salaries				1,414,431.32
<b>Total Personnel Services – Salaries</b>				<b>\$1,414,431.32</b>
<b>200 Personnel Services – Employee Benefits</b>				
210 Group Insurance – Contracted Provider				2,501.24
220 Social Security Contributions				109,073.05
230 PSERS Retirement Contributions				469,598.87
240 Tuition Reimbursement				45,556.00
250 Unemployment Compensation				83.42
260 Workers' Compensation				5,133.20
270 Group Insurance – Self-Insurance				323,664.35
<b>Total Personnel Services – Employee Benefits</b>				<b>\$955,610.13</b>
<b>300 Purchased Professional and Technical Services</b>				
330 Other Professional Services				52,458.76
340 Technical Services				129,821.93
360 Employee Training and Development Services			973.00	41,386.12
<b>Total Purchased Professional and Technical Services</b>			<b>\$973.00</b>	<b>\$223,666.81</b>
<b>400 Purchased Property Services</b>				
430 Repairs and Maintenance Services				120,105.29
440 Rentals				401,494.56
<b>Total Purchased Property Services</b>				<b>\$521,599.85</b>
<b>500 Other Purchased Services</b>				
530 Communications				179,325.88
549 Other Advertising/Public Relations				2,642.17
550 Printing and Binding				44.05
580 Travel			1,462.78	18,170.69
<b>Total Other Purchased Services</b>			<b>\$1,462.78</b>	<b>\$200,182.79</b>
<b>600 Supplies</b>				
610 General Supplies				11,170.97
640 Books and Periodicals				244.65
650 Supplies & Fees – Technology Related				431,248.88
<b>Total Supplies</b>				<b>\$442,664.50</b>
<b>700 Property</b>				
756 Capitalized Technology Equipment – Original				5,543.35
766 Capitalized Technology Equipment – Replacement				9,730.52
768 Capitalized Technology Software - Replacement				13,768.45
<b>Total Property</b>				<b>\$29,042.32</b>
<b>800 Other Objects</b>				
810 Dues and Fees				2,494.00
<b>Total Other Objects</b>				<b>\$2,494.00</b>
<b>Total 2800 Support Services – Central</b>			<b>\$2,435.78</b>	<b>\$3,789,691.72</b>

General Fund (10)

2810 Planning, Research, Development and Evaluation Services

Elementary

Secondary

Federal

Total

100 Personnel Services – Salaries

100 Personnel Services – Salaries 1,123,197.98

**Total Personnel Services – Salaries \$1,123,197.98**

200 Personnel Services – Employee Benefits

210 Group Insurance – Contracted Provider 1,941.68

220 Social Security Contributions 84,735.28

230 PSERS Retirement Contributions 374,080.85

250 Unemployment Compensation 69.52

260 Workers' Compensation 4,118.43

270 Group Insurance – Self-Insurance 292,523.53

**Total Personnel Services – Employee Benefits \$757,469.29**

300 Purchased Professional and Technical Services

340 Technical Services 84,037.50

**Total Purchased Professional and Technical Services \$84,037.50**

400 Purchased Property Services

430 Repairs and Maintenance Services 120,105.29

440 Rentals 401,494.56

**Total Purchased Property Services \$521,599.85**

500 Other Purchased Services

530 Communications 178,511.51

549 Other Advertising/Public Relations 522.17

550 Printing and Binding 44.05

580 Travel 3,006.80

**Total Other Purchased Services \$182,084.53**

600 Supplies

610 General Supplies 9,116.07

650 Supplies & Fees – Technology Related 431,198.39

**Total Supplies \$440,314.46**

700 Property

756 Capitalized Technology Equipment – Original 5,543.35

766 Capitalized Technology Equipment – Replacement 9,730.52

768 Capitalized Technology Software - Replacement 13,768.45

**Total Property \$29,042.32**

800 Other Objects

810 Dues and Fees 150.00

**Total Other Objects \$150.00**

**Total 2810 Planning, Research, Development and Evaluation Services \$3,137,895.93**

**General Fund (10)**

**2830 Staff Services**

	<u>Elementary</u>	<u>Secondary</u>	<u>Federal</u>	<u>Total</u>
<b>100 Personnel Services – Salaries</b>				
100 Personnel Services – Salaries				291,233.34
<b>Total Personnel Services – Salaries</b>				<b>\$291,233.34</b>
<b>200 Personnel Services – Employee Benefits</b>				
210 Group Insurance – Contracted Provider				559.56
220 Social Security Contributions				24,337.77
230 PSERS Retirement Contributions				95,518.02
240 Tuition Reimbursement				45,556.00
250 Unemployment Compensation				13.90
260 Workers' Compensation				1,014.77
270 Group Insurance – Self-Insurance				31,140.82
<b>Total Personnel Services – Employee Benefits</b>				<b>\$198,140.84</b>
<b>300 Purchased Professional and Technical Services</b>				
330 Other Professional Services				52,458.76
340 Technical Services				45,784.43
360 Employee Training and Development Services			973.00	41,386.12
<b>Total Purchased Professional and Technical Services</b>			<b>\$973.00</b>	<b>\$139,629.31</b>
<b>500 Other Purchased Services</b>				
530 Communications				814.37
549 Other Advertising/Public Relations				2,120.00
580 Travel			1,462.78	15,163.89
<b>Total Other Purchased Services</b>			<b>\$1,462.78</b>	<b>\$18,098.26</b>
<b>600 Supplies</b>				
610 General Supplies				2,054.90
640 Books and Periodicals				244.65
650 Supplies & Fees – Technology Related				50.49
<b>Total Supplies</b>				<b>\$2,350.04</b>
<b>800 Other Objects</b>				
810 Dues and Fees				2,344.00
<b>Total Other Objects</b>				<b>\$2,344.00</b>
<b>Total 2830 Staff Services</b>			<b>\$2,435.78</b>	<b>\$651,795.79</b>



General Fund (10)

2834 Staff Development Services – Non-Instructional, Certified Staff Only

Elementary

Secondary

Federal

Total

200 Personnel Services – Employee Benefits

220 Social Security Contributions

2,778.54

240 Tuition Reimbursement

41,752.00

**Total Personnel Services – Employee Benefits**

**\$44,530.54**

300 Purchased Professional and Technical Services

360 Employee Training and Development Services

973.00

6,049.00

**Total Purchased Professional and Technical Services**

**\$973.00**

**\$6,049.00**

500 Other Purchased Services

580 Travel

1,284.78

6,281.25

**Total Other Purchased Services**

**\$1,284.78**

**\$6,281.25**

600 Supplies

640 Books and Periodicals

244.65

**Total Supplies**

**\$244.65**

**Total 2834 Staff Development Services – Non-Instructional, Certified Staff Only**

**\$2,257.78**

**\$57,105.44**

**General Fund (10)**

	<u>Elementary</u>	<u>Secondary</u>	<u>Federal</u>	<u>Total</u>
<b>2836 Staff Development Services – Non-Instructional, Non-Certified Staff Only</b>				
<b>200 Personnel Services – Employee Benefits</b>				
240 Tuition Reimbursement				3,804.00
<b>Total Personnel Services – Employee Benefits</b>				<b>\$3,804.00</b>
<b>300 Purchased Professional and Technical Services</b>				
360 Employee Training and Development Services				35,337.12
<b>Total Purchased Professional and Technical Services</b>				<b>\$35,337.12</b>
<b>500 Other Purchased Services</b>				
580 Travel			178.00	8,634.46
<b>Total Other Purchased Services</b>			<b>\$178.00</b>	<b>\$8,634.46</b>
<b>Total 2836 Staff Development Services – Non-Instructional, Non-Certified Staff Only</b>			<b>\$178.00</b>	<b>\$47,775.58</b>

General Fund (10)

	<u>Elementary</u>	<u>Secondary</u>	<u>Federal</u>	<u>Total</u>
<b>2900 Other Support Services</b>				
<b>500 Other Purchased Services</b>				
595 IU Payments By Withholding				109,213.09
<b>Total Other Purchased Services</b>				<b>\$109,213.09</b>
<b>800 Other Objects</b>				
810 Dues and Fees				8,616.43
<b>Total Other Objects</b>				<b>\$8,616.43</b>
<b>Total 2900 Other Support Services</b>				<b>\$117,829.52</b>

General Fund (10)

2910 Support Services Not Listed Elsewhere In the 2000 Series

Elementary

Secondary

Federal

Total

500 Other Purchased Services

595 IU Payments By Withholding

109,213.09

**Total Other Purchased Services**

**\$109,213.09**

800 Other Objects

810 Dues and Fees

8,616.43

**Total Other Objects**

**\$8,616.43**

**Total 2910 Support Services Not Listed Elsewhere In the 2000 Series**

**\$117,829.52**

**General Fund (10)**

**3000 Operation of Non-Instructional Services**

**Total**

**100 Personnel Services – Salaries**

100 Personnel Services – Salaries 1,449,263.14

**Total Personnel Services – Salaries \$1,449,263.14**

**200 Personnel Services – Employee Benefits**

210 Group Insurance – Contracted Provider 471.06

220 Social Security Contributions 109,735.57

230 PSERS Retirement Contributions 459,106.30

250 Unemployment Compensation 16.95

260 Workers' Compensation 6,292.37

270 Group Insurance – Self-Insurance 97,179.93

**Total Personnel Services – Employee Benefits \$672,802.18**

**300 Purchased Professional and Technical Services**

329 Professional Educational Services – Other 49,703.75

330 Other Professional Services 20,364.70

340 Technical Services 1,950.00

350 Security / Safety Services 56,856.00

**Total Purchased Professional and Technical Services \$128,874.45**

**400 Purchased Property Services**

410 Cleaning Services 1,028.00

430 Repairs and Maintenance Services 30,182.31

440 Rentals 26,425.58

**Total Purchased Property Services \$57,635.89**

**500 Other Purchased Services**

510 Student Transportation Services 132,195.15

530 Communications 3,825.55

550 Printing and Binding 1,672.03

580 Travel 9,763.93

**Total Other Purchased Services \$147,456.66**

**600 Supplies**

610 General Supplies 151,354.08

620 Energy 21.04

630 Food 675.00

650 Supplies & Fees – Technology Related 6,270.00

**Total Supplies \$158,320.12**

**700 Property**

752 Capital Equipment – Original and Additional 18,940.00

762 Capitalized Equipment - Replacement 7,551.50

**Total Property \$26,491.50**

**800 Other Objects**

810 Dues and Fees 9,464.16

890 Miscellaneous Expenditures 18,905.07

General Fund (10)

3000 Operation of Non-Instructional Services

	<u>Total</u>
Total Other Objects	\$28,369.23
<b>Total 3000 Operation of Non-Instructional Services</b>	<b>\$2,669,213.17</b>

General Fund (10)

3200 Student Activities

Elementary                      Secondary                      Federal                      Total

100 Personnel Services – Salaries

100 Personnel Services – Salaries 1,421,713.14

**Total Personnel Services – Salaries \$1,421,713.14**

200 Personnel Services – Employee Benefits

210 Group Insurance – Contracted Provider 471.06

220 Social Security Contributions 107,631.35

230 PSERS Retirement Contributions 450,594.27

250 Unemployment Compensation 16.95

260 Workers' Compensation 6,152.75

270 Group Insurance – Self-Insurance 97,179.93

**Total Personnel Services – Employee Benefits \$662,046.31**

300 Purchased Professional and Technical Services

329 Professional Educational Services – Other 49,703.75

330 Other Professional Services 19,764.70

340 Technical Services 1,950.00

350 Security / Safety Services 56,856.00

**Total Purchased Professional and Technical Services \$128,274.45**

400 Purchased Property Services

410 Cleaning Services 1,028.00

430 Repairs and Maintenance Services 30,182.31

440 Rentals 26,425.58

**Total Purchased Property Services \$57,635.89**

500 Other Purchased Services

510 Student Transportation Services 132,195.15

530 Communications 3,825.55

550 Printing and Binding 1,672.03

580 Travel 9,210.93

**Total Other Purchased Services \$146,903.66**

600 Supplies

610 General Supplies 145,718.93

620 Energy 21.04

630 Food 675.00

650 Supplies & Fees – Technology Related 6,270.00

**Total Supplies \$152,684.97**

700 Property

752 Capital Equipment – Original and Additional 18,940.00

762 Capitalized Equipment - Replacement 7,551.50

**Total Property \$26,491.50**

800 Other Objects

810 Dues and Fees 7,164.16

890 Miscellaneous Expenditures 18,905.07

General Fund (10)

3200 Student Activities

Elementary

Secondary

Federal

Total

Total Other Objects				\$26,069.23
Total 3200 Student Activities				\$2,621,819.15

**General Fund (10)**

	<u>Elementary</u>	<u>Secondary</u>	<u>Federal</u>	<u>Total</u>
<b>3300 Community Services</b>				
<b>100 Personnel Services – Salaries</b>				
100 Personnel Services – Salaries				27,550.00
<b>Total Personnel Services – Salaries</b>				<b>\$27,550.00</b>
<b>200 Personnel Services – Employee Benefits</b>				
220 Social Security Contributions				2,104.22
230 PSERS Retirement Contributions				8,512.03
260 Workers’ Compensation				139.62
<b>Total Personnel Services – Employee Benefits</b>				<b>\$10,755.87</b>
<b>300 Purchased Professional and Technical Services</b>				
330 Other Professional Services				600.00
<b>Total Purchased Professional and Technical Services</b>				<b>\$600.00</b>
<b>500 Other Purchased Services</b>				
580 Travel				553.00
<b>Total Other Purchased Services</b>				<b>\$553.00</b>
<b>600 Supplies</b>				
610 General Supplies			905.50	5,635.15
<b>Total Supplies</b>			<b>\$905.50</b>	<b>\$5,635.15</b>
<b>800 Other Objects</b>				
810 Dues and Fees				2,300.00
<b>Total Other Objects</b>				<b>\$2,300.00</b>
<b>Total 3300 Community Services</b>			<b>\$905.50</b>	<b>\$47,394.02</b>

**General Fund (10)**

**4000 Facilities Acquisition, Construction and Improvement Services**

**Total**

**400 Purchased Property Services**

450 Construction Services

38,536.24

**Total Purchased Property Services**

**\$38,536.24**

**Total 4000 Facilities Acquisition, Construction and Improvement Services**

**\$38,536.24**

General Fund (10)

	<u>Elementary</u>	<u>Secondary</u>	<u>Federal</u>	<u>Total</u>
4600 Existing Building Improvement Services				
400 <u>Purchased Property Services</u>				
450 Construction Services				38,536.24
<b>Total Purchased Property Services</b>				<b>\$38,536.24</b>
<b>Total 4600 Existing Building Improvement Services</b>				<b>\$38,536.24</b>

**General Fund (10)**

**5000 Other Expenditures and Financing Uses**

**Total**

**800 Other Objects**

830 Interest	3,867,488.39
880 Refunds of Prior Years' Receipts	6.98

<b>Total Other Objects</b>	<b>\$3,867,495.37</b>
----------------------------	-----------------------

**900 Other Uses of Funds**

910 Redemption of Principal	10,624,397.99
932 Capital Reserve Fund Transfers Applicable To Fund 32	2,517,882.00

<b>Total Other Uses of Funds</b>	<b>\$13,142,279.99</b>
----------------------------------	------------------------

<b>Total 5000 Other Expenditures and Financing Uses</b>	<b>\$17,009,775.36</b>
---	------------------------

General Fund (10)

	<u>Elementary</u>	<u>Secondary</u>	<u>Federal</u>	<u>Total</u>
<b>5100 Debt Service / Other Expenditures and Financing Uses</b>				
<b>800 Other Objects</b>				
830 Interest				3,867,488.39
880 Refunds of Prior Years' Receipts				6.98
<b>Total Other Objects</b>				<b>\$3,867,495.37</b>
<b>900 Other Uses of Funds</b>				
910 Redemption of Principal				10,624,397.99
<b>Total Other Uses of Funds</b>				<b>\$10,624,397.99</b>
<b>Total 5100 Debt Service / Other Expenditures and Financing Uses</b>				<b>\$14,491,893.36</b>

General Fund (10)

	<u>Elementary</u>	<u>Secondary</u>	<u>Federal</u>	<u>Total</u>
<b>5110 Debt Service</b>				
<b>800 Other Objects</b>				
830 Interest				3,867,488.39
<b>Total Other Objects</b>				<b>\$3,867,488.39</b>
<b>900 Other Uses of Funds</b>				
910 Redemption of Principal				10,624,397.99
<b>Total Other Uses of Funds</b>				<b>\$10,624,397.99</b>
<b>Total 5110 Debt Service</b>				<b>\$14,491,886.38</b>

General Fund (10)

	<u>Elementary</u>	<u>Secondary</u>	<u>Federal</u>	<u>Total</u>
5130 Refund of Prior Year Revenues / Receipts				
800 <u>Other Objects</u>				
880 Refunds of Prior Years' Receipts				6.98
<b>Total Other Objects</b>				<b>\$6.98</b>
<b>Total 5130 Refund of Prior Year Revenues / Receipts</b>				<b>\$6.98</b>

General Fund (10)

5200 Interfund Transfers – Out

Elementary

Secondary

Federal

Total

900 Other Uses of Funds

932 Capital Reserve Fund Transfers Applicable To Fund 32

2,517,882.00

**Total Other Uses of Funds**

**\$2,517,882.00**

**Total 5200 Interfund Transfers – Out**

**\$2,517,882.00**

LEA : 123467303 Spring-Ford Area SD

Printed 1/16/2020 3:40:08 PM

General Fund (10)

5230 Capital Projects Fund Transfers

Elementary

Secondary

Federal

Total

900 Other Uses of Funds

932 Capital Reserve Fund Transfers Applicable To Fund 32

2,517,882.00

**Total Other Uses of Funds**

**\$2,517,882.00**

**Total 5230 Capital Projects Fund Transfers**

**\$2,517,882.00**

**Capital Reserve Fund - § 1431 (32)**

**2000 Support Services**

**300 Purchased Professional and Technical Services**

340 Technical Services 6,400.00

**Total Purchased Professional and Technical Services \$6,400.00**

**400 Purchased Property Services**

430 Repairs and Maintenance Services 44,100.00

**Total Purchased Property Services \$44,100.00**

**600 Supplies**

650 Supplies & Fees – Technology Related 22,515.81

**Total Supplies \$22,515.81**

**700 Property**

752 Capital Equipment – Original and Additional 156,377.36

756 Capitalized Technology Equipment – Original 205,410.00

762 Capitalized Equipment - Replacement 53,540.55

766 Capitalized Technology Equipment – Replacement 1,774,217.43

**Total Property \$2,189,545.34**

**Total 2000 Support Services \$2,262,561.15**

LEA : 123467303 Spring-Ford Area SD

Printed 1/16/2020 3:39:53 PM

Capital Reserve Fund - § 1431 (32)

2200 Support Services – Instructional Staff

600 Supplies

650 Supplies & Fees – Technology Related

**Total Supplies**

**Total 2200 Support Services – Instructional Staff**

Elementary

Secondary

Federal

Total

5,015.81

5,015.81

**\$5,015.81**

**\$5,015.81**

**\$5,015.81**

**\$5,015.81**

Capital Reserve Fund - § 1431 (32)

2230 Educational Television Services

600 Supplies

650 Supplies & Fees – Technology Related

**Total Supplies**

**Total 2230 Educational Television Services**

Elementary

Secondary

Federal

Total

5,015.81

5,015.81

**\$5,015.81**

**\$5,015.81**

**\$5,015.81**

**\$5,015.81**

Capital Reserve Fund - § 1431 (32)

2600 Operation and Maintenance of Plant Services

Elementary

Secondary

Federal

Total

700 Property

752 Capital Equipment – Original and Additional

156,377.36

762 Capitalized Equipment - Replacement

53,540.55

**Total Property**

**\$209,917.91**

**Total 2600 Operation and Maintenance of Plant Services**

**\$209,917.91**

LEA : 123467303 Spring-Ford Area SD

Printed 1/16/2020 3:39:53 PM

Capital Reserve Fund - § 1431 (32)

2640 Care and Upkeep of Equipment Services

Elementary

Secondary

Federal

Total

700 Property

762 Capitalized Equipment - Replacement

12,157.00

**Total Property**

**\$12,157.00**

**Total 2640 Care and Upkeep of Equipment Services**

**\$12,157.00**

Capital Reserve Fund - § 1431 (32)

2650 Vehicle Operation and Maintenance Services (Other Than Student Transportation Vehicles)

Elementary

Secondary

Federal

Total

700 Property

752 Capital Equipment – Original and Additional

119,556.36

762 Capitalized Equipment - Replacement

41,383.55

**Total Property**

**\$160,939.91**

**Total 2650 Vehicle Operation and Maintenance Services (Other Than Student Transportation Vehicles)**

**\$160,939.91**

LEA : 123467303 Spring-Ford Area SD

Printed 1/16/2020 3:39:53 PM

Capital Reserve Fund - § 1431 (32)

2660 Safety and Security Services

Elementary

Secondary

Federal

Total

700 Property

752 Capital Equipment – Original and Additional

36,821.00

**Total Property**

**\$36,821.00**

**Total 2660 Safety and Security Services**

**\$36,821.00**

Capital Reserve Fund - § 1431 (32)

2800 Support Services – Central

Elementary

Secondary

Federal

Total

300 Purchased Professional and Technical Services

340 Technical Services

6,400.00

**Total Purchased Professional and Technical Services**

**\$6,400.00**

400 Purchased Property Services

430 Repairs and Maintenance Services

44,100.00

**Total Purchased Property Services**

**\$44,100.00**

600 Supplies

650 Supplies & Fees – Technology Related

17,500.00

**Total Supplies**

**\$17,500.00**

700 Property

756 Capitalized Technology Equipment – Original

205,410.00

766 Capitalized Technology Equipment – Replacement

1,774,217.43

**Total Property**

**\$1,979,627.43**

**Total 2800 Support Services – Central**

**\$2,047,627.43**

Capital Reserve Fund - § 1431 (32)

2810 Planning, Research, Development and Evaluation Services

Elementary

Secondary

Federal

Total

300 Purchased Professional and Technical Services

340 Technical Services

6,400.00

**Total Purchased Professional and Technical Services**

**\$6,400.00**

400 Purchased Property Services

430 Repairs and Maintenance Services

44,100.00

**Total Purchased Property Services**

**\$44,100.00**

600 Supplies

650 Supplies & Fees – Technology Related

17,500.00

**Total Supplies**

**\$17,500.00**

700 Property

756 Capitalized Technology Equipment – Original

205,410.00

766 Capitalized Technology Equipment – Replacement

1,774,217.43

**Total Property**

**\$1,979,627.43**

**Total 2810 Planning, Research, Development and Evaluation Services**

**\$2,047,627.43**

Capital Reserve Fund - § 1431 (32)

4000 Facilities Acquisition, Construction and Improvement Services

Total

300 Purchased Professional and Technical Services

330 Other Professional Services 4,027.50

**Total Purchased Professional and Technical Services \$4,027.50**

400 Purchased Property Services

430 Repairs and Maintenance Services 19,997.00

450 Construction Services 534,826.42

**Total Purchased Property Services \$554,823.42**

700 Property

710 Land and Improvements 23,129.75

762 Capitalized Equipment - Replacement 315,802.28

**Total Property \$338,932.03**

**Total 4000 Facilities Acquisition, Construction and Improvement Services \$897,782.95**

LEA : 123467303 Spring-Ford Area SD

Printed 1/16/2020 3:40:03 PM

Capital Reserve Fund - § 1431 (32)

4200 Existing Site Improvement Services

Elementary

Secondary

Federal

Total

700 Property

710 Land and Improvements

23,129.75

762 Capitalized Equipment - Replacement

46,560.14

**Total Property**

**\$69,689.89**

**Total 4200 Existing Site Improvement Services**

**\$69,689.89**

Capital Reserve Fund - § 1431 (32)

4600 Existing Building Improvement Services

Elementary

Secondary

Federal

Total

300 Purchased Professional and Technical Services

330 Other Professional Services

4,027.50

**Total Purchased Professional and Technical Services**

**\$4,027.50**

400 Purchased Property Services

430 Repairs and Maintenance Services

19,997.00

450 Construction Services

534,826.42

**Total Purchased Property Services**

**\$554,823.42**

700 Property

762 Capitalized Equipment - Replacement

269,242.14

**Total Property**

**\$269,242.14**

**Total 4600 Existing Building Improvement Services**

**\$828,093.06**

**Other Capital Projects Fund (39)**

**2000 Support Services**

**500 Other Purchased Services**

530 Communications

**Total Other Purchased Services**

**Total 2000 Support Services**

Total

1.79

**\$1.79**

**\$1.79**

Other Capital Projects Fund (39)

2600 Operation and Maintenance of Plant Services

Elementary

Secondary

Federal

Total

500 Other Purchased Services

530 Communications

1.79

**Total Other Purchased Services**

**\$1.79**

**Total 2600 Operation and Maintenance of Plant Services**

**\$1.79**

LEA : 123467303 Spring-Ford Area SD

Printed 1/16/2020 3:39:54 PM

Other Capital Projects Fund (39)

2620 Operation of Buildings Services

Elementary

Secondary

Federal

Total

500 Other Purchased Services

530 Communications

1.79

**Total Other Purchased Services**

**\$1.79**

**Total 2620 Operation of Buildings Services**

**\$1.79**

**Other Capital Projects Fund (39)**

**4000 Facilities Acquisition, Construction and Improvement Services**

**Total**

**300 Purchased Professional and Technical Services**

330 Other Professional Services

107,497.54

**Total Purchased Professional and Technical Services**

**\$107,497.54**

**400 Purchased Property Services**

450 Construction Services

7,470,119.65

**Total Purchased Property Services**

**\$7,470,119.65**

**500 Other Purchased Services**

520 Insurance – General

11,312.00

**Total Other Purchased Services**

**\$11,312.00**

**Total 4000 Facilities Acquisition, Construction and Improvement Services**

**\$7,588,929.19**

**Other Capital Projects Fund (39)**

	<u>Elementary</u>	<u>Secondary</u>	<u>Federal</u>	<u>Total</u>
<b>4600 Existing Building Improvement Services</b>				
<b>300 <u>Purchased Professional and Technical Services</u></b>				
330 Other Professional Services				107,497.54
<b>Total Purchased Professional and Technical Services</b>				<b>\$107,497.54</b>
<b>400 <u>Purchased Property Services</u></b>				
450 Construction Services				7,470,119.65
<b>Total Purchased Property Services</b>				<b>\$7,470,119.65</b>
<b>500 <u>Other Purchased Services</u></b>				
520 Insurance – General				11,312.00
<b>Total Other Purchased Services</b>				<b>\$11,312.00</b>
<b>Total 4600 Existing Building Improvement Services</b>				<b>\$7,588,929.19</b>

**Debt Service Fund (40)**

**5000 Other Expenditures and Financing Uses**

**Total**

**900 Other Uses of Funds**

939 Other Fund Transfers

1,750,000.00

**Total Other Uses of Funds**

**\$1,750,000.00**

**Total 5000 Other Expenditures and Financing Uses**

**\$1,750,000.00**

Debt Service Fund (40)

5200 Interfund Transfers – Out

Elementary

Secondary

Federal

Total

900 Other Uses of Funds

939 Other Fund Transfers

1,750,000.00

**Total Other Uses of Funds**

**\$1,750,000.00**

**Total 5200 Interfund Transfers – Out**

**\$1,750,000.00**

Debt Service Fund (40)

5210 General Fund Transfers

Elementary

Secondary

Federal

Total

900 Other Uses of Funds

939 Other Fund Transfers

1,750,000.00

**Total Other Uses of Funds**

**\$1,750,000.00**

**Total 5210 General Fund Transfers**

**\$1,750,000.00**

	<u>General Fund(10)</u>	<u>Public Purpose Trust(27)</u>	<u>Other Compt Approved (28)</u>	<u>Athletic / Activity(29)</u>	<u>Capital Reserve (690, 1850)(31)</u>
<b>1000 Instruction</b>					
1100 Regular Programs - Elementary / Secondary	60,945,178.55				
1200 Special Programs - Elementary / Secondary	32,629,819.60				
1300 Vocational Education	1,843,879.00				
1400 Other Instructional Programs - Elementary / Secondary	54,829.06				
1500 Nonpublic School Programs	972.00				
<b>Total Instruction</b>	<b>\$95,474,678.21</b>				
<b>2000 Support Services</b>					
2100 Support Services - Students	6,176,576.54				
2200 Support Services - Instructional Staff	5,777,386.25				
2300 Support Services - Administration	7,247,850.24				
2400 Support Services - Pupil Health	2,628,518.18				
2500 Support Services - Business	1,175,648.13				
2600 Operation and Maintenance of Plant Services	11,128,321.73				
2700 Student Transportation Services	7,714,009.48				
2800 Support Services - Central	3,789,691.72				
2900 Other Support Services	117,829.52				
<b>Total Support Services</b>	<b>\$45,755,831.79</b>				
<b>3000 Operation of Non-Instructional Services</b>					
3200 Student Activities	2,621,819.15				
3300 Community Services	47,394.02				
<b>Total Operation of Non-Instructional Services</b>	<b>\$2,669,213.17</b>				
<b>4000 Facilities Acquisition, Construction and Improvement Services</b>					
4200 Existing Site Improvement Services					
4600 Existing Building Improvement Services	38,536.24				
<b>Total Facilities Acquisition, Construction and Improvement Services</b>	<b>\$38,536.24</b>				
<b>5000 Other Expenditures and Financing Uses</b>					
5100 Debt Service / Other Expenditures and Financing Uses	14,491,893.36				
5200 Interfund Transfers - Out	2,517,882.00				
<b>Total Other Expenditures and Financing Uses</b>	<b>\$17,009,775.36</b>				
<b>TOTAL ACTUAL EXPENDITURES &amp; OTHER FINANCING USES</b>	<b>\$160,948,034.77</b>				

LEA : 123467303 Spring-Ford Area SD

Printed 1/16/2020 3:40:20 PM

	<u>Capital Reserve (1431)(32)</u>	<u>Other Capital Projects Fund(39)</u>	<u>Debt Service(40)</u>	<u>Permanent(90)</u>	<u>Total</u>
<b>1000 Instruction</b>					
1100 Regular Programs - Elementary / Secondary					60,945,178.55
1200 Special Programs - Elementary / Secondary					32,629,819.60
1300 Vocational Education					1,843,879.00
1400 Other Instructional Programs - Elementary / Secondary					54,829.06
1500 Nonpublic School Programs					972.00
<b>Total Instruction</b>					<b>\$95,474,678.21</b>
<b>2000 Support Services</b>					
2100 Support Services - Students					6,176,576.54
2200 Support Services - Instructional Staff	5,015.81				5,782,402.06
2300 Support Services - Administration					7,247,850.24
2400 Support Services - Pupil Health					2,628,518.18
2500 Support Services - Business					1,175,648.13
2600 Operation and Maintenance of Plant Services	209,917.91	1.79			11,338,241.43
2700 Student Transportation Services					7,714,009.48
2800 Support Services - Central	2,047,627.43				5,837,319.15
2900 Other Support Services					117,829.52
<b>Total Support Services</b>	<b>\$2,262,561.15</b>	<b>\$1.79</b>			<b>\$48,018,394.73</b>
<b>3000 Operation of Non-Instructional Services</b>					
3200 Student Activities					2,621,819.15
3300 Community Services					47,394.02
<b>Total Operation of Non-Instructional Services</b>					<b>\$2,669,213.17</b>
<b>4000 Facilities Acquisition, Construction and Improvement Services</b>					
4200 Existing Site Improvement Services	69,689.89				69,689.89
4600 Existing Building Improvement Services	828,093.06	7,588,929.19			8,455,558.49
<b>Total Facilities Acquisition, Construction and Improvement Services</b>	<b>\$897,782.95</b>	<b>\$7,588,929.19</b>			<b>\$8,525,248.38</b>
<b>5000 Other Expenditures and Financing Uses</b>					
5100 Debt Service / Other Expenditures and Financing Uses					14,491,893.36
5200 Interfund Transfers - Out			1,750,000.00		4,267,882.00
<b>Total Other Expenditures and Financing Uses</b>			<b>\$1,750,000.00</b>		<b>\$18,759,775.36</b>
<b>TOTAL ACTUAL EXPENDITURES &amp; OTHER FINANCING USES</b>	<b>\$3,160,344.10</b>	<b>\$7,588,930.98</b>	<b>\$1,750,000.00</b>		<b>\$173,447,309.85</b>

**PSERS Salary Data (Salary Data should relate to the General Fund only)**

<b>Amount Description</b>	<b>Amount</b>
Total Salary Base for salaries subject to PSERS withholding	67,845,657.34
Total Federally Funded salaries subject to PSERS withholding	644,933.47
	<hr/>

**Title I Expenditure Data**

<b>Amount Description</b>	<b>Amount</b>
Expenditures Funded with Current Title I Funds	215,930.13
Expenditures Funded with Carry over Title I Funds	
	<hr/>
<b>Total Title I Expenditure Data</b>	<b>\$215,930.13</b>
	<hr/>

**Benefits for Staff Relative to Collective Bargaining Agreements**

	OBJECT	COVERED	NOT COVERED	TOTAL
<b>10 General Fund</b>				
	211 Medical Insurance			
	212 Dental Insurance			
	215 Eye Care Insurance			
	216 Prescription Insurance			
	271 Self-Insurance Medical Benefits	6,635,693.74	3,401,861.01	10,037,554.75
	272 Self-Insurance Dental Benefits	429,966.47	341,438.12	771,404.59
	275 Self-Insurance Eye Care Benefits	121,374.05	54,073.73	175,447.78
	276 Self-Insurance Prescription Benefits	2,122,440.72	1,545,185.19	3,667,625.91
	<b>FUND TOTAL</b>	<b>\$9,309,474.98</b>	<b>\$5,342,558.05</b>	<b>\$14,652,033.03</b>
<b>50 Enterprise Fund</b>	No Self Insurance data to report			
	211 Medical Insurance			
	212 Dental Insurance			
	215 Eye Care Insurance			
	216 Prescription Insurance			
	271 Self-Insurance Medical Benefits			
	272 Self-Insurance Dental Benefits			
	275 Self-Insurance Eye Care Benefits			
	276 Self-Insurance Prescription Benefits			
	<b>FUND TOTAL</b>			
<b>60 Internal Service Fund</b>	No Self Insurance data to report			
	211 Medical Insurance			
	212 Dental Insurance			
	215 Eye Care Insurance			
	216 Prescription Insurance			
	271 Self-Insurance Medical Benefits			
	272 Self-Insurance Dental Benefits			
	275 Self-Insurance Eye Care Benefits			
	276 Self-Insurance Prescription Benefits			
	<b>FUND TOTAL</b>			
<b>Total of All Funds</b>		<b>\$9,309,474.98</b>	<b>\$5,342,558.05</b>	<b>\$14,652,033.03</b>

LEA : 123467303 Spring-Ford Area SD

Printed 1/16/2020 3:40:31 PM

Function	Special Education (Prior Year)	Nonspecial Education (Prior Year)	Total (Prior Year)	Special Education (Current Year)	Nonspecial Education (Current Year)	Total (Current Year)
2120 Guidance Services	213,964.75	3,677,302.13	3,891,266.88	370,800.00	4,017,740.88	4,388,540.88
2140 Psychological Services	1,312,341.79	119,161.00	1,431,502.79	1,310,558.92	114,140.42	1,424,699.34
2150 Speech Pathology and Audiology Services	94,457.59		94,457.59	117,723.21		117,723.21
2160 Social Work Services		154,215.16	154,215.16		168,058.28	168,058.28
2260 Instruction and Curriculum Development Services	1,015,237.75	770,468.45	1,785,706.20	1,019,851.49	842,646.81	1,862,498.30
2350 Legal and Accounting Services	38,193.48	131,164.56	169,358.04	116,360.78	120,093.25	236,454.03
2420 Medical Services	727,409.58	16,292.18	743,701.76	881,395.15	1,908.00	883,303.15
2440 Nursing Services	327,015.00	1,287,646.41	1,614,661.41	306,033.21	1,350,984.65	1,657,017.86
2700 Student Transportation Services	2,268,454.37	5,408,892.62	7,677,346.99	2,037,251.08	5,676,758.40	7,714,009.48
<b>Total</b>	<b>\$5,997,074.31</b>	<b>\$11,565,142.51</b>	<b>\$17,562,216.82</b>	<b>\$6,159,973.84</b>	<b>\$12,292,330.69</b>	<b>\$18,452,304.53</b>

(PRINCIPAL AMOUNTS ONLY)

**GOVERNMENTAL FUNDS/ ACTIVITIES**

	Short-Term Borrowing	General Obligation Bonds/Notes	Authority Building Obligations	Other Long-Term Debt	Other Post-Employment Benefits (OPEB)	Compensated Absences	Net Pension Liability	Total
1. Debt at Beginning of Fiscal Year		86,555,000.00		11,589,270.00	16,000,998.00	3,764,538.00	225,936,000.00	343,845,806.00
2. Additional Debt Incurred During Year						73,114.00	491,000.00	564,114.00
3. Retirements and Repayments		9,755,000.00		869,397.99	1,359,293.00			11,983,690.99
4. Debt at End of Fiscal Year		76,800,000.00		10,719,872.01	14,641,705.00	3,837,652.00	226,427,000.00	332,426,229.01
5. Accreted Interest at End Of Fiscal Year								
6. Total Debt and Accreted Interest		76,800,000.00		10,719,872.01	14,641,705.00	3,837,652.00	226,427,000.00	332,426,229.01
7. Current Portion P&I - Due within 1 year		13,217,575.00		1,338,399.18		886,406.00		15,442,380.18
8. Interest Paid during current fiscal year		3,393,563.00		202,135.99				3,595,698.99

(PRINCIPAL AMOUNTS ONLY)

**PROPRIETARY FUNDS**

	Short-Term Borrowing	General Obligation Bonds/Notes	Authority Building Obligations	Other Long-Term Debt	Other Post-Employment Benefits (OPEB)	Compensated Absences	Net Pension Liability	Total
1. Debt at Beginning of Fiscal Year							4,165,000.00	4,165,000.00
2. Additional Debt Incurred During Year							456,000.00	456,000.00
3. Retirements and Repayments								
4. Debt at End of Fiscal Year							4,621,000.00	4,621,000.00
5. Accreted Interest at End Of Fiscal Year								
6. Total Debt and Accreted Interest							4,621,000.00	4,621,000.00
7. Current Portion P&I - Due within 1 year								
8. Interest Paid during current fiscal year								

**Total Principal and Interest Payments Made by Your School - All Funds**

Function	Fund		Principal (910)	Principal (920)	Interest (830)	Total (Principal +Interest)	Misc Other Uses (990)
5110	10	General Fund	10,624,397.99		3,867,488.39	14,491,886.38	
5110	20	Special Revenue Funds					
5110	30	Capital Projects Funds					
5110	40	Debt Service Fund					
5110	90	Permanent Fund					
5120	10	General Fund					
5120	20	Special Revenue Funds					
5120	30	Capital Projects Funds					
5120	40	Debt Service Fund					

<b>Total Debt Payments - Governmental Funds</b>			<b>\$10,624,397.99</b>		<b>\$3,867,488.39</b>	<b>\$14,491,886.38</b>	
---	--	--	------------------------	--	-----------------------	------------------------	--

Function	Fund		Principal (910)	Principal (920)	Interest (830)	Total (Principal +Interest)
5110	50	Enterprise Fund				
5110	60	Internal Service Fund				
5120	50	Enterprise Fund				
5120	60	Internal Service Fund				

<b>Total Debt Payments - Proprietary Funds</b>						
--	--	--	--	--	--	--

**Debt Details**  
**Governmental Funds/ Activities**

Debt Category	Debt Issue Date (MM/YYYY)	Principal Amounts Only			Debt at End of Fiscal Year	Current Portion Due Within One Year (Principal and Interest)	Interest Paid During Fiscal Year
		Debt at Beginning of Fiscal Year	Additions	Reductions / Repayments			
General Obligation Bonds/Notes – CIB	04/2018	7,195,000.00		5,000.00	7,190,000.00	292,400.00	215,663.00
General Obligation Bonds/Notes – CIB	12/2016	25,560,000.00		3,075,000.00	22,485,000.00	4,136,400.00	1,071,025.00
General Obligation Bonds/Notes – CIB	02/2016	5,395,000.00		1,000,000.00	4,395,000.00	1,170,300.00	170,300.00
General Obligation Bonds/Notes – CIB	06/2015	35,235,000.00		3,265,000.00	31,970,000.00	4,624,575.00	1,357,175.00
General Obligation Bonds/Notes – CIB	03/2012	13,170,000.00		2,410,000.00	10,760,000.00	2,993,900.00	579,400.00
Other Long Term Debt/Liabilities		11,589,270.00		869,397.99	10,719,872.01	1,338,399.18	202,135.99
Compensated Absences		3,764,538.00	73,114.00		3,837,652.00	886,406.00	
Other Post-Employment Benefits (OPEB)		16,000,998.00		1,359,293.00	14,641,705.00		
Net Pension Liability		225,936,000.00	491,000.00		226,427,000.00		
<b>Totals for Debt Entered:</b>		<b>\$343,845,806.00</b>	<b>\$564,114.00</b>	<b>\$11,983,690.99</b>	<b>\$332,426,229.01</b>	<b>\$15,442,380.18</b>	<b>\$3,595,698.99</b>

**Bond Details**  
**Proprietary Funds**

Debt Category	Debt Issue Date (MM/YYYY)	Principal Amounts Only			Debt at End of Fiscal Year	Current Portion Due Within One Year (Principal and Interest)	Interest Paid During Fiscal Year
		Debt at Beginning of Fiscal Year	Additions	Reductions / Repayments			
Net Pension Liability		4,165,000.00	456,000.00		4,621,000.00		
<b>Totals for Debt Entered:</b>		<b>\$4,165,000.00</b>	<b>\$456,000.00</b>		<b>\$4,621,000.00</b>		

**General Fund (10)**

**Section 1: Tuition/Purchased Services as Reported within Expenditure Detail**

	Amount
Tuition Reported in General Fund Expenditures 1000-560	7,863,559.32
Purchased Services in General Fund Expenditures 1000-594 and 1000-597	1,829.69
<b>Section 1 Total</b>	<b>\$7,865,389.01</b>

**Section 2: Tuition Paid to Institution Types During Fiscal Year**

	Tuition Paid For Nonspecial Education	Tuition Paid For Special Education	Total
1 1306 Institutions			
2 Institutionalized Children's Programs		1,177.19	1,177.19
3 Juveniles Incarcerated in Adult Facilities			
4 Residential Treatment Facilities			
5 Other Local Education Agencies	14,934.42	547,452.52	562,386.94
6 Brick and Mortar Charter Schools	1,116,281.81	421,892.28	1,538,174.09
7 Cyber Charter Schools	782,750.67	687,367.45	1,470,118.12
8 Career and Technology Centers		1,873,838.48	1,873,838.48
9 Approved Private Schools		1,545,879.68	1,545,879.68
10 PA Chartered Schools for the Deaf and Blind			
11 Private Residential Rehabilitative Institutions	58,339.34	815,475.17	873,814.51
12 Juvenile Detention Centers			
13 Special Program Jointures			
14 Other Tuition Not Included Elsewhere In This Section			
<b>Section 2 Total</b>	<b>\$1,972,306.24</b>	<b>\$5,893,082.77</b>	<b>\$7,865,389.01</b>

**Food Service / Cafeteria Operations Fund (51)**

**2000 Support Services**

**Total**

**300 Purchased Professional and Technical Services**

360 Employee Training and Development Services 2,370.24

**Total Purchased Professional and Technical Services \$2,370.24**

**400 Purchased Property Services**

430 Repairs and Maintenance Services 28,064.87

**Total Purchased Property Services \$28,064.87**

**600 Supplies**

610 General Supplies 6,904.04

**Total Supplies \$6,904.04**

**Total 2000 Support Services \$37,339.15**

**Food Service / Cafeteria Operations Fund (51)**

**2600 Operation and Maintenance of Plant Services**

Elementary

Secondary

Federal

Total

**400 Purchased Property Services**

430 Repairs and Maintenance Services

28,064.87

28,064.87

**Total Purchased Property Services**

**\$28,064.87**

**\$28,064.87**

**600 Supplies**

610 General Supplies

6,904.04

6,904.04

**Total Supplies**

**\$6,904.04**

**\$6,904.04**

**Total 2600 Operation and Maintenance of Plant Services**

**\$34,968.91**

**\$34,968.91**

LEA : 123467303 Spring-Ford Area SD

Printed 1/16/2020 3:40:38 PM

Food Service / Cafeteria Operations Fund (51)

2620 Operation of Buildings Services

Elementary

Secondary

Federal

Total

600 Supplies

610 General Supplies

323.06

323.06

**Total Supplies**

**\$323.06**

**\$323.06**

**Total 2620 Operation of Buildings Services**

**\$323.06**

**\$323.06**

**Food Service / Cafeteria Operations Fund (51)**

**2640 Care and Upkeep of Equipment Services**

Elementary

Secondary

Federal

Total

**400 Purchased Property Services**

430 Repairs and Maintenance Services

28,064.87

28,064.87

**Total Purchased Property Services**

**\$28,064.87**

**\$28,064.87**

**600 Supplies**

610 General Supplies

6,580.98

6,580.98

**Total Supplies**

**\$6,580.98**

**\$6,580.98**

**Total 2640 Care and Upkeep of Equipment Services**

**\$34,645.85**

**\$34,645.85**

**Food Service / Cafeteria Operations Fund (51)**

**2800 Support Services – Central**

Elementary

Secondary

Federal

Total

**300 Purchased Professional and Technical Services**

360 Employee Training and Development Services

2,370.24

2,370.24

**Total Purchased Professional and Technical Services**

**\$2,370.24**

**\$2,370.24**

**Total 2800 Support Services – Central**

**\$2,370.24**

**\$2,370.24**

Food Service / Cafeteria Operations Fund (51)

2830 Staff Services

Elementary

Secondary

Federal

Total

300 Purchased Professional and Technical Services

360 Employee Training and Development Services

2,370.24

2,370.24

**Total Purchased Professional and Technical Services**

**\$2,370.24**

**\$2,370.24**

**Total 2830 Staff Services**

**\$2,370.24**

**\$2,370.24**

Food Service / Cafeteria Operations Fund (51)

2836 Staff Development Services – Non-Instructional, Non-Certified Staff Only

Elementary

Secondary

Federal

Total

300 Purchased Professional and Technical Services

360 Employee Training and Development Services

2,370.24

2,370.24

**Total Purchased Professional and Technical Services**

**\$2,370.24**

**\$2,370.24**

**Total 2836 Staff Development Services – Non-Instructional, Non-Certified Staff Only**

**\$2,370.24**

**\$2,370.24**

**Food Service / Cafeteria Operations Fund (51)**

**3000 Operation of Non-Instructional Services**

**Total**

**100 Personnel Services – Salaries**

100 Personnel Services – Salaries 1,075,485.19

**Total Personnel Services – Salaries \$1,075,485.19**

**200 Personnel Services – Employee Benefits**

210 Group Insurance – Contracted Provider 1,435.74

220 Social Security Contributions 80,153.14

230 PSERS Retirement Contributions 351,421.36

270 Group Insurance – Self-Insurance 338,965.99

**Total Personnel Services – Employee Benefits \$771,976.23**

**300 Purchased Professional and Technical Services**

330 Other Professional Services 9,613.50

**Total Purchased Professional and Technical Services \$9,613.50**

**400 Purchased Property Services**

440 Rentals 9,682.49

**Total Purchased Property Services \$9,682.49**

**500 Other Purchased Services**

530 Communications 153.92

540 Advertising 950.72

550 Printing and Binding 1,660.00

580 Travel 39.44

**Total Other Purchased Services \$2,804.08**

**600 Supplies**

610 General Supplies 68,702.89

620 Energy 8,101.08

630 Food 1,062,708.84

**Total Supplies \$1,139,512.81**

**700 Property**

740 Depreciation 15,000.00

**Total Property \$15,000.00**

**800 Other Objects**

810 Dues and Fees (114.00)

**Total Other Objects (\$114.00)**

**900 Other Uses of Funds**

900 Other Uses of Funds (3,570.49)

**Total Other Uses of Funds (\$3,570.49)**

**Total 3000 Operation of Non-Instructional Services \$3,020,389.81**

**Food Service / Cafeteria Operations Fund (51)**

	<u>Elementary</u>	<u>Secondary</u>	<u>Federal</u>	<u>Total</u>
<b>3100 Food Services</b>				
<b>100 Personnel Services – Salaries</b>				
100 Personnel Services – Salaries			1,075,485.19	1,075,485.19
<b>Total Personnel Services – Salaries</b>			<b>\$1,075,485.19</b>	<b>\$1,075,485.19</b>
<b>200 Personnel Services – Employee Benefits</b>				
210 Group Insurance – Contracted Provider			1,435.74	1,435.74
220 Social Security Contributions			80,153.14	80,153.14
230 PSERS Retirement Contributions			351,421.36	351,421.36
270 Group Insurance – Self-Insurance			338,965.99	338,965.99
<b>Total Personnel Services – Employee Benefits</b>			<b>\$771,976.23</b>	<b>\$771,976.23</b>
<b>300 Purchased Professional and Technical Services</b>				
330 Other Professional Services			9,613.50	9,613.50
<b>Total Purchased Professional and Technical Services</b>			<b>\$9,613.50</b>	<b>\$9,613.50</b>
<b>400 Purchased Property Services</b>				
440 Rentals			9,682.49	9,682.49
<b>Total Purchased Property Services</b>			<b>\$9,682.49</b>	<b>\$9,682.49</b>
<b>500 Other Purchased Services</b>				
530 Communications			153.92	153.92
540 Advertising			950.72	950.72
550 Printing and Binding			1,660.00	1,660.00
580 Travel			39.44	39.44
<b>Total Other Purchased Services</b>			<b>\$2,804.08</b>	<b>\$2,804.08</b>
<b>600 Supplies</b>				
610 General Supplies			68,702.89	68,702.89
620 Energy			8,101.08	8,101.08
630 Food			1,062,708.84	1,062,708.84
<b>Total Supplies</b>			<b>\$1,139,512.81</b>	<b>\$1,139,512.81</b>
<b>700 Property</b>				
740 Depreciation			15,000.00	15,000.00
<b>Total Property</b>			<b>\$15,000.00</b>	<b>\$15,000.00</b>
<b>800 Other Objects</b>				
810 Dues and Fees			(114.00)	(114.00)
<b>Total Other Objects</b>			<b>(\$114.00)</b>	<b>(\$114.00)</b>
<b>900 Other Uses of Funds</b>				
900 Other Uses of Funds			(3,570.49)	(3,570.49)
<b>Total Other Uses of Funds</b>			<b>(\$3,570.49)</b>	<b>(\$3,570.49)</b>
<b>Total 3100 Food Services</b>			<b>\$3,020,389.81</b>	<b>\$3,020,389.81</b>

	<u>Food Service(51)</u>	<u>Child Care Operations(52)</u>	<u>Other Enterprise(58)</u>	<u>Internal Service(60)</u>	<u>Total</u>
<b>2000 Support Services</b>					
2600 Operation and Maintenance of Plant Services	34,968.91				34,968.91
2800 Support Services - Central	2,370.24				2,370.24
<b>Total Support Services</b>	<b>\$37,339.15</b>				<b>\$37,339.15</b>
<b>3000 Operation of Non-Instructional Services</b>					
3100 Food Services	3,020,389.81				3,020,389.81
<b>Total Operation of Non-Instructional Services</b>	<b>\$3,020,389.81</b>				<b>\$3,020,389.81</b>
<b>TOTAL ACTUAL EXPENDITURES &amp; OTHER FINANCING USES</b>	<b>\$3,057,728.96</b>				<b>\$3,057,728.96</b>

Fund	School	School Number	Local Personnel	Local Nonpersonnel	State Personnel	State Nonpersonnel	Federal Personnel	Federal Nonpersonnel	Total	Explanation
10										
	Brooke El Sch	7321	5,041,729.72	638,994.83	1,334,060.24	168,472.98	3,176.39	19,384.06	7,205,818.22	
	Evans El Sch	7940	5,372,206.55	757,664.64	1,420,045.75	199,600.81	96,307.06	22,280.71	7,868,105.52	
	Limerick El Sch	3358	4,428,527.32	480,113.05	1,173,333.49	127,134.25	1,676.81	12,818.07	6,223,602.99	
	Oaks El Sch	4809	4,606,532.35	634,963.29	1,216,881.32	167,055.38	203.34	20,037.70	6,645,673.38	
	Royersford El Sch	3364	4,239,753.48	583,907.50	1,121,188.21	154,273.81	74,483.45	33,748.03	6,207,354.48	
	Spring City El Sch	7458	1,667,646.02	259,041.62	441,271.73	67,780.64	58,970.03	13,828.45	2,508,538.49	
	Spring-Ford Intrmd Sch 5th/6th	3365	2,795,688.90	1,297,740.65	725,778.75	341,459.96	62,882.85	52,213.04	5,275,764.15	
	Spring-Ford MS 7th Grade Ctr	7817	1,279,847.30	558,631.99	331,030.00	146,828.46	3,698.88	16,962.32	2,336,998.95	
	Spring-Ford MS 8th Grade Ctr	7818	1,274,270.42	377,472.16	330,779.71	98,847.65	219.29	14,914.09	2,096,503.32	
	Spring-Ford SHS 9-12 Ctr	3367	25,143,886.34	3,599,006.92	6,652,336.41	949,392.28	264,932.25	193,275.87	36,802,830.07	
	Upper Providence El Sch	7763	5,457,438.35	638,654.27	1,444,490.53	168,752.91	75,522.47	18,219.22	7,803,077.75	
<b>Total</b>			<b>61,307,526.75</b>	<b>9,826,190.92</b>	<b>16,191,196.14</b>	<b>2,589,599.13</b>	<b>642,072.82</b>	<b>417,681.56</b>	<b>90,974,267.32</b>	