

LEA Name : Spring-Ford Area SD  
Address : 857 South Lewis Road  
Royersford , PA 19468

County : Montgomery  
AUN Number : 123467303  
LEA Type : SD


## Annual Financial Report Accuracy Certification Statement

For Fiscal Year Ending  
6/30/2017


Pennsylvania Department of Education  
&  
Office of Comptroller Operations

PDE-2056: Intermediate Unit  
PDE-2057: School District, AVTS/CTC, Charter School,  
and Special Program Jointure

**CERTIFICATION: By signing this page I agree that the electronic data submitted is a complete and accurate statement of the financial operations and status of the local education agency for the fiscal year. It has been prepared in accordance with generally accepted accounting principles and established Commonwealth of PA reporting guidelines.**

  
\_\_\_\_\_  
Chief School Administrator Signature

2-26-18  
\_\_\_\_\_  
Date

  
\_\_\_\_\_  
Board Secretary Signature

2/26/18  
\_\_\_\_\_  
Date

Jim D Fink  
\_\_\_\_\_  
Contact Person

(610)705-6000 Ext :  
\_\_\_\_\_  
Contact Person Telephone Number

jfink@spring-ford.net  
\_\_\_\_\_  
Contact Person E-mail Address

(610)705-6245  
\_\_\_\_\_  
Contact Person Fax Number

**Audit Certification**  
**Annual Financial Report:**  
For Fiscal Year Ending **6/30/2017**  
**(Pursuant to PA School Code Section 218(b))**

LEA Name : Spring-Ford Area SD  
AUN Number : 123467303  
County : Montgomery

<b>Audit Certification Due:</b> 12/31/2017
---

This certification is applicable to the Annual Financial Report data submitted through the Consolidated Financial Reporting System on: 10/31/17, 12/22/17  
Date

Auditing Firm: Maillie LLP

Auditor Contact Name: Eric Gooding CPA  
Auditor Phone: 610-482-3153  
Auditor E-mail: egooding@maillie.com

CERTIFICATION: By signing this page I agree that the financial statements of the school have been properly audited as noted above pursuant to Article XXIV, and in the auditor's professional opinion, the Annual Financial Report (PDE-2057) submitted on the date referenced is materially consistent with the audited financial statements.

Chief School Administrator,

[Signature]  
Signature

12/22/17  
Date

Board Secretary

[Signature]  
Signature

12/22/17  
Date

Jim D Fink

\_\_\_\_\_  
Contact Person

jfink@spring-ford.net

\_\_\_\_\_  
Contact Person E-mail Address

(610)705-6000

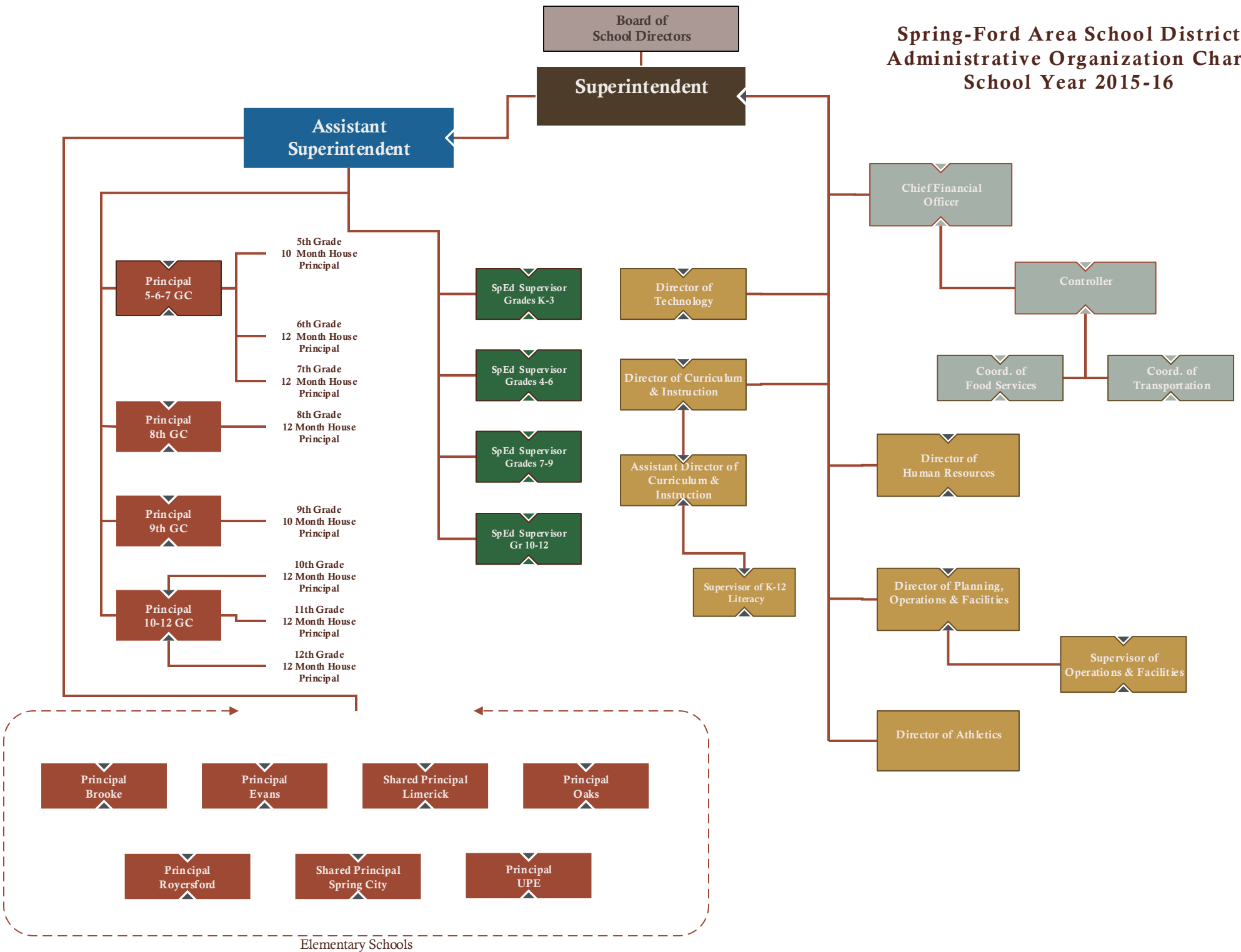
Ext :

\_\_\_\_\_  
Contact Person Telephone Number

(610)705-6245

\_\_\_\_\_  
Contact Person Fax Number

# Spring-Ford Area School District Administrative Organization Chart School Year 2015-16



<u>Val Number</u>	<u>Description</u>	<u>Justification</u>
30550	Revenue Detail: Tax Revenue Data must be reported consistently for current and prior year. Correct the data or enter a justification.  6120, Current AFR Rev Detail: \$0.00 6120, Prior AFR Rev Detail: \$101,370.90	Board action to stop collecting per capita taxes starting the 16/17 fiscal year. Only delinquent collection at this point.
30625	Revenue Detail: Current Tax Revenue amount cannot exceed 50% variance from prior year amount. Correct the data or enter a justification.  6120, Current AFR Rev Detail: \$0.00 6120, Prior AFR Rev Detail: \$101,370.90	Board action to stop collecting per capita taxes starting the 16/17 fiscal year. Only delinquent collection at this point.
30685	Revenue Detail: Current Tax Revenue amount cannot exceed 50% variance from prior year amount. Correct the data or enter a justification.  6153, Current AFR Rev Detail: \$2,625,161.03 6153, Prior AFR Rev Detail: \$1,749,767.77	Increase in the real estate market throughout the district along with land development.
50400	SESS - 2120 Guidance Services: SESS Schedule amounts for Special Education vary from prior year by 40% or more. Correct the data or enter a justification.  SESS Schedule 2120: \$265,307.76 Prior Year SESS Schedule 2120: \$0.00	Additional counseling services needed and proper coding of services.
50420	SESS - 2150 Speech Pathology and Audiology Services: SESS Schedule amounts for Special Education vary from prior year by 40% or more. Correct the data or enter a justification.  SESS Schedule 2150: \$2,734.36 Prior Year SESS Schedule 2150: \$0.00	Increase in speech and audiology services required for the year.
50430	SESS - 2160 Social Work Services: SESS Schedule amounts for Special Education vary from prior year by 40% or more. Correct the data or enter a justification.  SESS Schedule 2160: \$0.00 Prior Year SESS Schedule 2160: \$19,559.75	Increase in social work services needed.
50450	SESS - 2350 Legal and Accounting Services: SESS Schedule amounts for Special Education vary from prior year by 40% or more. Correct the data or enter a justification.  SESS Schedule 2350: \$23,683.93 Prior Year SESS Schedule 2350: \$159,372.26	Decrease in due process hearings compared to last fiscal year.

50470	<p>SESS - 2440 Nursing Services: SESS Schedule amounts for Special Education vary from prior year by 40% or more. Correct the data or enter a justification.</p> <p style="margin-left: 40px;">SESS Schedule 2440: \$303,635.42 Prior Year SESS Schedule 2440: \$44,946.50</p>	<p>Increase in nursing service contracts per IEPs.</p>
-------	--	--

Amounts Expressed in Whole Dollars	<u>General Fund</u> <u>(10)</u>	<u>Public Purpose Trust</u> <u>(27)</u>	<u>Other Compt Approved</u> <u>(28)</u>	<u>Athletic / Activity</u> <u>(29)</u>	<u>Capital Reserve (690.</u> <u>1850)</u> <u>(31)</u>
<b>Assets And Deferred Outflows Of Resources</b>					
<b>Assets</b>					
0100 Cash and Cash Equivalents	44,825,200				
0110 Investments	5,848,575				
0120 Taxes Receivable	1,889,117				
0130 Due From Other Funds	89,231				
0141 Due From Other Governments	33,617				
0142 State Revenue Receivable	4,557,994				
0143 Federal Revenue Receivable	1,008,891				
0145 Other Intergovernmental Revenue Receivable					
0146 Due from Primary Government					
0147 Due from Component Unit					
0150 Other Receivables	24,149				
0170 Inventories	(66)				
0180 Prepaid Expenses (Expenditures)	1,023,167				
0190 Other Current Assets					
<b>Total Assets</b>	<b>\$59,299,875</b>				
0910 Deferred Outflows of Resources					
<b>Total Assets And Deferred Outflows Of Resources</b>	<b>\$59,299,875</b>				

Amounts Expressed in Whole Dollars

	<u>Capital Reserve (1431)</u> <u>(32)</u>	<u>Other Capital Projects</u> <u>Fund</u> <u>(39)</u>	<u>Debt Service</u> <u>(40)</u>	<u>Permanent</u> <u>(90)</u>	<u>Total Governmental</u> <u>Funds</u>
<b>Assets And Deferred Outflows Of Resources</b>					
<b>Assets</b>					
0100 Cash and Cash Equivalents	12,774,097		8,304,098		65,903,395
0110 Investments	1,130,075				6,978,650
0120 Taxes Receivable					1,889,117
0130 Due From Other Funds	4,103		1,100,000		1,193,334
0141 Due From Other Governments					33,617
0142 State Revenue Receivable					4,557,994
0143 Federal Revenue Receivable					1,008,891
0145 Other Intergovernmental Revenue Receivable					
0146 Due from Primary Government					
0147 Due from Component Unit					
0150 Other Receivables					24,149
0170 Inventories					(66)
0180 Prepaid Expenses (Expenditures)					1,023,167
0190 Other Current Assets					
<b>Total Assets</b>	<b>\$13,908,275</b>		<b>\$9,404,098</b>		<b>\$82,612,248</b>
0910 Deferred Outflows of Resources					
<b>Total Assets And Deferred Outflows Of Resources</b>	<b>\$13,908,275</b>		<b>\$9,404,098</b>		<b>\$82,612,248</b>

Amounts Expressed in Whole Dollars

	<u>General Fund</u> <u>(10)</u>	<u>Public Purpose Trust</u> <u>(27)</u>	<u>Other Compt Approved</u> <u>(28)</u>	<u>Athletic / Activity</u> <u>(29)</u>	<u>Capital Reserve (690.</u> <u>1850)</u> <u>(31)</u>
<b>Liabilities And Deferred Inflows Of Resources And Fund Balances</b>					
<b>Liabilities</b>					
0400 Due to Other Funds	9,764,665				
0411 Due to Other Governments	105,028				
0412 Due to Primary Government					
0413 Due to Component Unit					
0420 Accounts Payable	2,743,823				
0430 Contracts Payable					
0440 Current Portion of Long-Term Debt	160,355				
0450 Short-Term Payables					
0461 Accrued Salaries and Benefits	13,932,998				
0462 Payroll Deductions and Withholding					
0480 Unearned Revenues	1,941,248				
0490 Other Current Liabilities	2,149,223				
<b>Total Liabilities</b>	<b>\$30,797,340</b>				
0950 Deferred Inflows of Resources					
<b>Fund Balances</b>					
0810 Nonspendable Fund Balance	1,023,166				
0820 Restricted Fund Balance	1,515,917				
0830 Committed Fund Balance	4,011,152				
0840 Assigned Fund Balance	7,644,312				
0850 Unassigned Fund Balance	14,307,988				
<b>Total Fund Balances</b>	<b>\$28,502,535</b>				
<b>Total Liabilities, Deferred Inflows Of Resources And Fund Balances</b>	<b>\$59,299,875</b>				

Amounts Expressed in Whole Dollars	<u>Capital Reserve (1431)</u> <u>(32)</u>	<u>Other Capital Projects</u> <u>Fund</u> <u>(39)</u>	<u>Debt Service</u> <u>(40)</u>	<u>Permanent</u> <u>(90)</u>	<u>Total Governmental</u> <u>Funds</u>
<b>Liabilities And Deferred Inflows Of Resources And Fund Balances</b>					
<b>Liabilities</b>					
0400 Due to Other Funds					9,764,665
0411 Due to Other Governments					105,028
0412 Due to Primary Government					
0413 Due to Component Unit					
0420 Accounts Payable	716,541				3,460,364
0430 Contracts Payable					
0440 Current Portion of Long-Term Debt					160,355
0450 Short-Term Payables					
0461 Accrued Salaries and Benefits					13,932,998
0462 Payroll Deductions and Withholding					
0480 Unearned Revenues					1,941,248
0490 Other Current Liabilities					2,149,223
<b>Total Liabilities</b>	<b>\$716,541</b>				<b>\$31,513,881</b>
0950 Deferred Inflows of Resources					
<b>Fund Balances</b>					
0810 Nonspendable Fund Balance					1,023,166
0820 Restricted Fund Balance					1,515,917
0830 Committed Fund Balance	13,191,734				17,202,886
0840 Assigned Fund Balance			9,404,098		17,048,410
0850 Unassigned Fund Balance					14,307,988
<b>Total Fund Balances</b>	<b>\$13,191,734</b>		<b>\$9,404,098</b>		<b>\$51,098,367</b>
<b>Total Liabilities, Deferred Inflows Of Resources And Fund Balances</b>	<b>\$13,908,275</b>		<b>\$9,404,098</b>		<b>\$82,612,248</b>

Amounts Expressed in Whole Dollars	<u>General Fund</u> <u>(10)</u>	<u>Public Purpose Trust</u> <u>(27)</u>	<u>Other Compt Approved</u> <u>(28)</u>	<u>Athletic / Activity</u> <u>(29)</u>	<u>Capital Reserve (690.</u> <u>1850)</u> <u>(31)</u>
<b>Revenues</b>					
6000 Revenue from Local Sources	120,169,258				
7000 Revenue from State Sources	29,769,462				
8000 Revenue from Federal Sources	918,663				
<b>Total Revenues</b>	<b>\$150,857,383</b>				
<b>Expenditures</b>					
1000 Instruction	83,835,446				
2000 Support Services	42,938,046				
3000 Operation of Non-Instructional Services	2,290,459				
4000 Facilities Acquisition, Construction and Improvement Services	245,414				
5110 Debt Service	13,188,840				
5130 Refund of Prior Year Revenues / Receipts	3,357				
<b>Total Expenditures</b>	<b>\$142,501,562</b>				
<b>Excess (Deficiency) Of Revenues Over Expenditures</b>	<b>\$8,355,821</b>				
<b>Other Financing Sources (Uses)</b>					
9110 Face Value of Bonds Issued					
9120 Proceeds from Refunding of Bonds					
9130 Bond Premiums					
9200 Proceeds from Extended-Term Financing					
9300 Interfund Transfers - IN					
9400 Sale of or Compensation for Loss of Fixed Assets					
9710 Transfers from Component Units					
9720 Transfers from Primary Governments					
9910 Other Financing Sources Not Listed in the 9000 Series					
9990 Insurance Recoveries	97,301				
5120 Debt Service – Refunded Bonds					
5150 Bond Discounts					
5200 Interfund Transfers – Out	2,820,928				
5300 Transfers Out to Component Units/Primary Governments					
<b>Total Other Financing Sources (Uses)</b>	<b>(\$2,723,627)</b>				

Amounts Expressed in Whole Dollars	<u>Capital Reserve (1431)</u> <u>(32)</u>	<u>Other Capital Projects</u> <u>Fund</u> <u>(39)</u>	<u>Debt Service</u> <u>(40)</u>	<u>Permanent</u> <u>(90)</u>	<u>Total Governmental</u> <u>Funds</u>
<b>Revenues</b>					
6000 Revenue from Local Sources	35,556		20,992		120,225,806
7000 Revenue from State Sources					29,769,462
8000 Revenue from Federal Sources					918,663
<b>Total Revenues</b>	<b>\$35,556</b>		<b>\$20,992</b>		<b>\$150,913,931</b>
<b>Expenditures</b>					
1000 Instruction					83,835,446
2000 Support Services	1,245,685				44,183,731
3000 Operation of Non-Instructional Services					2,290,459
4000 Facilities Acquisition, Construction and Improvement Services	1,162,239				1,407,653
5110 Debt Service					13,188,840
5130 Refund of Prior Year Revenues / Receipts					3,357
<b>Total Expenditures</b>	<b>\$2,407,924</b>				<b>\$144,909,486</b>
<b>Excess (Deficiency) Of Revenues Over Expenditures</b>	<b>(\$2,372,368)</b>		<b>\$20,992</b>		<b>\$6,004,445</b>
<b>Other Financing Sources (Uses)</b>					
9110 Face Value of Bonds Issued					
9120 Proceeds from Refunding of Bonds		30,105,000			30,105,000
9130 Bond Premiums					
9200 Proceeds from Extended-Term Financing					
9300 Interfund Transfers - IN	1,513,953		1,300,000		2,813,953
9400 Sale of or Compensation for Loss of Fixed Assets					
9710 Transfers from Component Units					
9720 Transfers from Primary Governments					
9910 Other Financing Sources Not Listed in the 9000 Series					
9990 Insurance Recoveries					97,301
5120 Debt Service – Refunded Bonds		30,105,000			30,105,000
5150 Bond Discounts					
5200 Interfund Transfers – Out					2,820,928
5300 Transfers Out to Component Units/Primary Governments					
<b>Total Other Financing Sources (Uses)</b>	<b>\$1,513,953</b>	<b>\$0</b>	<b>\$1,300,000</b>		<b>\$90,326</b>

Amounts Expressed in Whole Dollars	<u>General Fund</u> <u>(10)</u>	<u>Public Purpose Trust</u> <u>(27)</u>	<u>Other Compt Approved</u> <u>(28)</u>	<u>Athletic / Activity</u> <u>(29)</u>	<u>Capital Reserve</u> <u>(690.</u> <u>1850)</u> <u>(31)</u>
<b>Special And Extraordinary Items</b>					
9920 Special Items – Gains					
9930 Extraordinary Items – Gains					
5520 Special Items – Losses					
5530 Extraordinary Items – Losses					
<b>Net Change In Fund Balances</b>	<b>\$5,632,194</b>				
<b>Fund Balance</b>					
0001 Fund Balance - Beginning of Fiscal Year	22,870,344				
<b>Fund Balance - End Of Year</b>	<b>\$28,502,538</b>				

Amounts Expressed in Whole Dollars	<u>Capital Reserve (1431)</u> <u>(32)</u>	<u>Other Capital Projects</u> <u>Fund</u> <u>(39)</u>	<u>Debt Service</u> <u>(40)</u>	<u>Permanent</u> <u>(90)</u>	<u>Total Governmental</u> <u>Funds</u>
<b>Special And Extraordinary Items</b>					
9920 Special Items – Gains					
9930 Extraordinary Items – Gains					
5520 Special Items – Losses					
5530 Extraordinary Items – Losses					
<b>Net Change In Fund Balances</b>	<b>(\$858,415)</b>		<b>\$1,320,992</b>		<b>\$6,094,771</b>
<b>Fund Balance</b>					
0001 Fund Balance - Beginning of Fiscal Year	14,050,149		8,083,106		45,003,599
<b>Fund Balance - End Of Year</b>	<b>\$13,191,734</b>		<b>\$9,404,098</b>		<b>\$51,098,370</b>

Amounts Expressed in Whole Dollars	<u>Food Service</u> <u>(51)</u>	<u>Child Care</u> <u>Operations</u> <u>(52)</u>	<u>Other Enterprise</u> <u>(58)</u>	<u>TOTAL</u>	<u>Internal Service</u> <u>(60)</u>
<b>Assets And Deferred Outflows Of Resources</b>					
<b>Current Assets</b>					
0100 Cash and Cash Equivalents	504,771			504,771	
0110 Investments					
0130 Due From Other Funds	30,046			30,046	8,630,517
0141 Due From Other Governments					
0142 State Revenue Receivable	9,233			9,233	
0143 Federal Revenue Receivable	105,760			105,760	
0146 Due from Primary Government					
0147 Due from Component Unit					
0150 Other Receivables	702			702	
0170 Inventories	77,713			77,713	
0180 Prepaid Expenses (Expenditures)					
0190 Other Current Assets					
<b>Total Current Assets</b>	<b>\$728,225</b>			<b>\$728,225</b>	<b>\$8,630,517</b>
<b>Noncurrent Assets</b>					
0211 Land					
0212 Site Improvements (Net)					
0220 Buildings and Building Improvements (Net)					
0230 Machinery, Equipment and Furniture (Net)	194,220			194,220	
0250 Construction in Progress					
0260 Long Term Prepayments					
0290 Other Noncurrent Assets					
<b>Total Noncurrent Assets</b>	<b>\$194,220</b>			<b>\$194,220</b>	
0910 Deferred Outflows of Resources	734,000			734,000	
<b>Total Assets And Deferred Outflows Of Resources</b>	<b>\$1,656,445</b>			<b>\$1,656,445</b>	<b>\$8,630,517</b>

Amounts Expressed in Whole Dollars	<u>Food Service</u> (51)	<u>Child Care</u> <u>Operations</u> (52)	<u>Other Enterprise</u> (58)	<u>TOTAL</u>	<u>Internal Service</u> (60)
<b>Liabilities And Deferred Inflows Of Resources And Net Position</b>					
<b>Current Liabilities</b>					
0400 Due to Other Funds	89,230			89,230	
0411 Due to Other Governments					
0413 Due to Component Unit					
0420 Accounts Payable	9,551			9,551	
0430 Contracts Payable					
0440 Current Portion of Long-Term Debt					
0450 Short-Term Payables					
0461 Accrued Salaries and Benefits	128,779			128,779	
0462 Payroll Deductions and Withholding					
0480 Unearned Revenues	139,701			139,701	
0490 Other Current Liabilities					
<b>Total Current Liabilities</b>	<b>\$367,261</b>			<b>\$367,261</b>	
<b>Noncurrent Liabilities</b>					
0510 Bonds Payable					
0520 Extended-Term Financing Agreements Payable					
0530 Lease-Purchase Obligations					
0540 Accumulated Compensated Absences	55,587			55,587	
0550 Authority Lease Obligations					
0560 Other Post-Employment Benefits (OPEB)					
0570 Net Pension Liability					
0599 Other Noncurrent Liabilities	3,751,000			3,751,000	
<b>Total Noncurrent Liabilities</b>	<b>\$3,806,587</b>			<b>\$3,806,587</b>	
<b>Total Liabilities</b>	<b>\$4,173,848</b>			<b>\$4,173,848</b>	
0950 Deferred Inflows of Resources	279,000			279,000	
<b>Net Position</b>					
0791 Net Investment in Capital Assets	313,597			313,597	
0008 Restricted Net Position (0792 – 0798)					
0799 Unrestricted Net Position	(3,110,000)			(3,110,000)	8,630,517
<b>Total Net Position</b>	<b>(\$2,796,403)</b>			<b>(\$2,796,403)</b>	<b>\$8,630,517</b>
<b>Total Liabilities And Deferred Inflows Of Resources And Net Position</b>	<b>\$1,656,445</b>			<b>\$1,656,445</b>	<b>\$8,630,517</b>

Amounts Expressed in Whole Dollars	<u>Food Service</u> <u>(51)</u>	<u>Child Care Operations</u> <u>(52)</u>	<u>Other Enterprise</u> <u>(58)</u>	<u>TOTAL</u>	<u>Internal Service</u> <u>(60)</u>
<b>Operating Revenues</b>					
6600 Food Service Revenue	1,892,396			1,892,396	
0071 Charges for Services					
0072 Other Operating Revenue					
<b>Total Operating Revenues</b>	<b>\$1,892,396</b>			<b>\$1,892,396</b>	
<b>Operating Expenses</b>					
100 Personnel Services – Salaries	1,086,099			1,086,099	
200 Personnel Services – Employee Benefits	699,802			699,802	
300 Purchased Professional and Technical Services	1,660			1,660	
400 Purchased Property Services	57,888			57,888	
500 Other Purchased Services	5,228			5,228	
600 Supplies	1,044,503			1,044,503	
740 Depreciation	15,745			15,745	
810 Dues and Fees	2,607			2,607	
890 Miscellaneous Expenditures					
<b>Total Operating Expenses</b>	<b>\$2,913,532</b>			<b>\$2,913,532</b>	
<b>Operating Income (Loss)</b>	<b>(\$1,021,136)</b>			<b>(\$1,021,136)</b>	
<b>Non Operating Revenues (Expenses)</b>					
6500 Earnings on Investments	1,907			1,907	
6920 Contributions and Donations from Private Sources					
6930 Gains or Losses on Sale of Fixed Assets					
6991 Refunds of a Prior Year Expenditure					
7000 Revenue from State Sources	252,661			252,661	
8000 Revenue from Federal Sources	770,227			770,227	
820 Claims and Judgments Against the LEA					
830 Interest					
<b>TOTAL Non Operating Revenues (Expenses)</b>	<b>\$1,024,795</b>			<b>\$1,024,795</b>	
<b>Income (Loss) Before Contributions And Transfers</b>	<b>\$3,659</b>			<b>\$3,659</b>	

Amounts Expressed in Whole Dollars	<u>Food Service</u> <u>(51)</u>	<u>Child Care Operations</u> <u>(52)</u>	<u>Other Enterprise</u> <u>(58)</u>	<u>TOTAL</u>	<u>Internal Service</u> <u>(60)</u>
<b>Contributions, Transfers, and Special and Extraordinary Items</b>					
5200 Interfund Transfers – Out					
5300 Transfers Out to Component Units/Primary Governments					
5520 Special Items – Losses					
5530 Extraordinary Items – Losses					
9300 Interfund Transfers - IN	6,975			6,975	
9500 Capital Contributions					
9700 Transfers IN From Component Units/Primary Governments					
9920 Special Items – Gains					
9930 Extraordinary Items – Gains					
<b>Change In Net Position</b>	<b>\$10,634</b>			<b>\$10,634</b>	
0002 Net Position - Beginning of Fiscal Year	(2,806,039)			(2,806,039)	8,630,517
0003 Accounting Changes / Residual Equity Transfers	(998)			(998)	
<b>Net Position - End Of Year</b>	<b>(\$2,796,403)</b>			<b>(\$2,796,403)</b>	<b>\$8,630,517</b>

Amounts Expressed in Whole Dollars	<u>Food Service</u> <u>(51)</u>	<u>Child Care Operations</u> <u>(52)</u>	<u>Other Enterprise</u> <u>(58)</u>	<u>TOTAL</u>	<u>Internal Service(60)</u>
<b>Cash Flows From Operating Activities</b>					
0011 Cash Receipts From Users	1,880,913			1,880,913	
0012 Cash Receipts From Assessments Made to Other Funds					
0013 Cash Receipts From Earnings on Investments					
0014 Cash Receipts From Other Operating Revenue					
0015 Cash Payments To Employees For Services	1,636,863			1,636,863	
0016 Cash Payments For Insurance Claims					
0017 Cash Payments To Suppliers For Goods and Services	1,068,900			1,068,900	
0018 Cash Payments For Other Operating Expenses	58,129			58,129	
<b>Net Cash Provided By (Used For) Operating Activities</b>	<b>(\$882,979)</b>			<b>(\$882,979)</b>	
<b>Cash Flows From Non-Capital Financing Activities</b>					
0021 Receipts From Local Sources - 6000					
0022 Receipts From State Sources - 7000	246,679			246,679	
0023 Receipts From Federal Sources -8000	522,133			522,133	
0024 Notes and Loans Received (Repaid)					
0025 Interest Paid on Notes/Loans - 5100-830					
0026 Operating Transfers In (Out)/Residual Equity Trans					
0027 Operating Transfers In (Out) Primary Government / Comp Unit	(23,070)			(23,070)	
0028 Receipts From Refund of Prior Year Expenditures - 6991					
0029 Special and Extraordinary Gains (losses)					
<b>Net Cash Prov By (Used for) Non-Capital Financing Activities</b>	<b>\$745,742</b>			<b>\$745,742</b>	
<b>Cash Flows From Capital and Related Financing Activities</b>					
0031 Payments For Fac Acq, Const, and Imp - 4000					
0032 Gain / (Loss) on Sale of Fixed Assets - 6930					
0033 Proceeds From Extended Term Financing - 9200					
0034 Principal Paid on Financing Agreements					
0035 Interest Paid on Financing Agreements - 5100-830					
0036 (Inc) Dec in Contributed Capital					
<b>Net Cash Prov By (Used for) Capital and Related Financing Activities</b>					
<b>Cash Flows From Investing Activities</b>					
0041 Earnings on Investments - 6500	1,907			1,907	
0042 Purchase of Inv Securities / Deposits to Inv Pools					
0043 Receipts From Investment Pool Withdrawals					
0044 Proceeds from Sale and Maturity of Inv Securities					
0045 Loans Received (Paid)					
<b>Net Cash Prov By (Used for) Investing Activities</b>	<b>\$1,907</b>			<b>\$1,907</b>	

	<u>Food Service</u> <u>(51)</u>	<u>Child Care Operations</u> <u>(52)</u>	<u>Other Enterprise</u> <u>(58)</u>	<u>TOTAL</u>	<u>Internal Service</u> <u>(60)</u>
<b>Net Increase (Decrease) in Cash Flows</b>	<b>(135,330)</b>			<b>(135,330)</b>	
0004 Cash and Cash Equivalents Beginning of Year	640,101			640,101	
<b>Cash and Cash Equivalents at Year End</b>	<b>\$504,771</b>			<b>\$504,771</b>	
<hr/>					
<b>Reconciliation of Operating Income (Loss) To Net Cash Provided by (Used For) Operating Activities</b>					
0005 Operating Income (Loss) per REP	(1,021,136)			(1,021,136)	
<b>Adjustments</b>					
0051 Depreciation and Net Amortization	15,745			15,745	
0052 Provision for Uncollectible Accounts					
0053 Other Adjustments	(10)			(10)	
<b>Effect of Changes in Assets, Liabilities, Deferred Outflows and Deferred Inflows</b>					
0054 (Inc) Dec In Accounts Receivable (0120-0150)	3,439			3,439	
0055 Advances to Other Funds (0160)	(116,941)			(116,941)	
0056 (Inc) Dec in Inventories (0170)	16,311			16,311	
0057 (Inc) Dec in Prepaid Expenses (0180)					
0058 (Inc) Dec in Other Current or Noncurrent Assets	176,702			176,702	
0064 Deferred Outflows (0910)					
0059 Inc (Dec) in Accounts Payable (0400-0450)	7,067			7,067	
0060 Inc (Dec) in Accrued Salaries/Benefits (0461)	32,721			32,721	
0065 Inc (Dec) in Net Pension Liabilities (0570)	20,000			20,000	
0066 Inc (Dec) in Other Postemp Benefit Oblig (0560)					
0061 Inc (Dec) in Payroll Deductions/Withholding (0462)					
0062 Inc (Dec) in Unearned Revenue (0480)	(14,922)			(14,922)	
0063 Inc (Dec) in Other Current or Noncurrent Liabilities	(1,955)			(1,955)	
0067 Deferred Inflows (0950)					
<b>Total Adjustments</b>	<b>\$138,157</b>			<b>\$138,157</b>	
<b>Cash Provided By (Used for) Total</b>	<b>(\$882,979)</b>			<b>(\$882,979)</b>	

COMBINED STATEMENT OF CASH FLOWS  
SCHEDULE OF NONCASH INVESTING, CAPITAL, AND FINANCING ACTIVITIES

Explanation of Transaction and Balance Sheet Effect	Amount
<b>Total</b>	

LEA : 123467303 Spring-Ford Area SD

Printed 7/18/2018 8:50:02 AM

Amounts Expressed in Whole Dollars

	<u>Private Purpose Trust</u> (71)	<u>Investment Trust</u> (72)	<u>Pension Trust</u> (73)	<u>Activity</u> (81)
<b>Assets And Deferred Outflows Of Resources</b>				
<b>Assets</b>				
0100 Cash and Cash Equivalents	44,561			251,774
0110 Investments	37,881			
0130 Due From Other Funds				
0147 Due from Component Unit				
0150 Other Receivables				
0170 Inventories				
0180 Prepaid Expenses (Expenditures)				
0190 Other Current Assets				
0220 Buildings and Building Improvements (Net)				
0230 Machinery, Equipment and Furniture (Net)				
<b>Total Assets</b>	<b>\$82,442</b>			<b>\$251,774</b>
0910 Deferred Outflows of Resources				
<b>Total Assets And Deferred Outflows Of Resources</b>	<b>\$82,442</b>			<b>\$251,774</b>

LEA : 123467303 Spring-Ford Area SD

Printed 7/18/2018 8:50:02 AM

Amounts Expressed in Whole Dollars	<u>Other Agency</u> <u>(89)</u>	<u>Discrete Component Units</u> <u>(98)</u>	<u>Discrete Component Units</u> <u>(99)</u>	<u>Total Fiduciary Funds</u>
<b>Assets And Deferred Outflows Of Resources</b>				
<b>Assets</b>				
0100 Cash and Cash Equivalents				296,335
0110 Investments				37,881
0130 Due From Other Funds				
0147 Due from Component Unit				
0150 Other Receivables				
0170 Inventories				
0180 Prepaid Expenses (Expenditures)				
0190 Other Current Assets				
0220 Buildings and Building Improvements (Net)				
0230 Machinery, Equipment and Furniture (Net)				
<b>Total Assets</b>				<b>\$334,216</b>
0910 Deferred Outflows of Resources				
<b>Total Assets And Deferred Outflows Of Resources</b>				<b>\$334,216</b>

LEA : 123467303 Spring-Ford Area SD

Printed 7/18/2018 8:50:02 AM

Amounts Expressed in Whole Dollars	<u>Private Purpose Trust</u> (71)	<u>Investment Trust</u> (72)	<u>Pension Trust</u> (73)	<u>Activity</u> (81)
<b>Liabilities, Deferred Inflows Of Resources And Net Position</b>				
<b>Liabilities</b>				
0400 Due to Other Funds				
0411 Due to Other Governments				
0412 Due to Primary Government				
0413 Due to Component Unit				
0420 Accounts Payable	400			251,774
0430 Contracts Payable				
0450 Short-Term Payables				
0461 Accrued Salaries and Benefits				
0462 Payroll Deductions and Withholding				
0480 Unearned Revenues				
0490 Other Current Liabilities				
<b>Total Liabilities</b>	<b>\$400</b>			<b>\$251,774</b>
0950 Deferred Inflows of Resources				
<b>Net Position</b>				
0791 Net Investment in Capital Assets				
0009 Restricted Net Position (0792 – 0798)	82,042			
0799 Unrestricted Net Position				
<b>Total Net Position</b>	<b>\$82,042</b>			
<b>Total Liabilities, Deferred Inflows Of Resources And Net Position</b>	<b>\$82,442</b>			<b>\$251,774</b>

LEA : 123467303 Spring-Ford Area SD

Printed 7/18/2018 8:50:02 AM

Amounts Expressed in Whole Dollars

<u>Other Agency</u>	<u>Discrete Component Units</u>	<u>Discrete Component Units</u>	<u>Total Fiduciary Funds</u>
(89)	(98)	(99)	

**Liabilities, Deferred Inflows Of Resources And Net Position**

**Liabilities**

0400 Due to Other Funds			
0411 Due to Other Governments			
0412 Due to Primary Government			
0413 Due to Component Unit			
0420 Accounts Payable			252,174
0430 Contracts Payable			
0450 Short-Term Payables			
0461 Accrued Salaries and Benefits			
0462 Payroll Deductions and Withholding			
0480 Unearned Revenues			
0490 Other Current Liabilities			

<b>Total Liabilities</b>			<b>\$252,174</b>
--------------------------	--	--	------------------

0950 Deferred Inflows of Resources

**Net Position**

0791 Net Investment in Capital Assets			
0009 Restricted Net Position (0792 – 0798)			82,042
0799 Unrestricted Net Position			

<b>Total Net Position</b>			<b>\$82,042</b>
---------------------------	--	--	-----------------

<b>Total Liabilities, Deferred Inflows Of Resources And Net Position</b>			<b>\$334,216</b>
--	--	--	------------------

Amounts Expressed in Whole Dollars	<u>Private Purpose Trust</u> <u>(71)</u>	<u>Investment Trust</u> <u>(72)</u>	<u>Pension Trust</u> <u>(73)</u>	<u>Discrete Component</u> <u>Units</u> <u>(98)</u>	<u>Discrete Component</u> <u>Units</u> <u>(99)</u>	<u>Total Fiduciary</u> <u>Funds</u>
<b>Additions</b>						
0091 Gifts and Contributions	329					329
0092 Other Additions	325					325
<b>Deductions</b>						
0093 Scholarships Awarded	2,734					2,734
0094 Other Deductions						
<b>Change In Net Position</b>	<b>(\$2,080)</b>					<b>(\$2,080)</b>
0006 Net Position – Beginning of Fiscal Year	84,122					84,122
0007 Net Position Held in Trust for Pension Benefits						
<b>Net Position - End of Fiscal Year</b>	<b>\$82,042</b>					<b>\$82,042</b>

	<u>Revenue Reported In Current Year</u>	<u>Current Year Tax Accrual</u>	<u>Prior Year Tax Accrual</u>	<u>Taxes Collected In Current Year</u>
<b><u>Revenue from Local Sources</u></b>				
6111 Current Real Estate Taxes	96,729,627.88			96,729,627.88
6112 Interim Real Estate Taxes	1,035,120.17			1,035,120.17
6113 Public Utility Realty Taxes	120,231.21			120,231.21
6114 Payments in Lieu of Current Taxes - State / Local	1,663,580.22			1,663,580.22
6143 Current Act 511 Local Services Taxes	173,548.36			173,548.36
6151 Current Act 511 Earned Income Taxes	10,230,082.59			10,230,082.59
6153 Current Act 511 Real Estate Transfer Taxes	2,625,161.03			2,625,161.03
6411 Delinquent Real Estate Taxes	4,575,538.20			4,575,538.20
6420 Delinquent Per Capita Taxes, Section 679	55,545.92			55,545.92
6500 Earnings on Investments	264,373.35			
6700 Revenues from LEA Activities	435,116.07			
6810 Revenue from Local Governmental Units	70,000.00			
6829 State Revenue Received from Other Sources	2,000.00			
6831 Federal Revenue Received from Other Pennsylvania Public LEAs	7,162.11			
6832 Federal IDEA Revenue Received as Pass Through	1,495,623.94			
6910 Rentals	221,957.75			
6920 Contributions and Donations from Private Sources	52,901.41			
6942 Summer School Tuition	12,940.00			
6944 Receipts from Other LEAs in Pennsylvania - Education	33,617.08			
6991 Refunds of a Prior Year Expenditure	143,141.06			
6992 Energy Efficiency Revenues and Incentives	51,962.32			
6999 Other Revenues Not Specified Above	170,027.00			
<b>TOTAL Revenue from Local Sources</b>	<b>\$120,169,257.67</b>			<b>\$117,208,435.58</b>

**Revenue Reported  
In Current Year**

**Revenue from State Sources**

7110 Basic Education Funding	9,499,470.45		
7160 Tuition for Orphans Subsidy	86,070.81		
7271 Special Education funds for School-Aged Pupils	2,637,507.18		
7299 Program Revenues Not Listed Previously in the 7200 Series	2,338.07		
7311 Pupil Transportation Subsidy	1,566,827.39		
7312 Nonpublic and Charter School Pupil Transportation Subsidy	386,155.00		
7320 Rental and Sinking Fund Payments / Building Reimbursement Subsidy	980,170.74		
7330 Health Services (Medical, Dental, Nurse, Act 25)	168,038.53		
7340 State Property Tax Reduction Allocation	2,427,984.65		
7505 Ready to Learn Block Grant	442,498.00		
7810 State Share of Social Security and Medicare Taxes	2,362,175.06		
7820 State Share of Retirement Contributions	9,210,226.12		
<b>TOTAL Revenue from State Sources</b>	<b>\$29,769,462.00</b>		

**Revenue Reported  
In Current Year**

**Revenue from Federal Sources**

8514 NCLB, Title I - Improving the Academic Achievement of the Disadvantaged	490,639.00			
8515 NCLB, Title II - Preparing, Training and Recruiting High Quality Teachers and Principals	102,974.00			
8810 School-Based Access Medicaid Reimbursement Program (SBAP) Reimbursements (Access)	300,000.00			
8820 Medical Assistance Reimbursement for Administrative Claiming (Quarterly) Program	25,050.24			
<b>TOTAL Revenue from Federal Sources</b>	<b>\$918,663.24</b>			

**Revenue Reported  
In Current Year**

**Other Financing Sources**

9990 Insurance Recoveries 97,300.84

**TOTAL Other Financing Sources \$97,300.84**

**TOTAL FROM ALL SOURCES \$150,954,683.75 \$117,208,435.58**

Revenue from Local Sources	120,169,257.67
Revenue from State Sources	29,769,462.00
Revenue from Federal Sources	918,663.24
Other Financing Sources	97,300.84
<b>TOTAL FROM ALL SOURCES</b>	<b>\$150,954,683.75</b>

**General Fund (10)**

	<u>Total</u>
<b>1000 Instruction</b>	
<b>100 Personnel Services – Salaries</b>	
100 Personnel Services – Salaries	44,887,946.57
<b>Total Personnel Services – Salaries</b>	<b>\$44,887,946.57</b>
<b>200 Personnel Services – Employee Benefits</b>	
210 Group Insurance – Contracted Provider	37,773.90
220 Social Security Contributions	3,314,032.04
230 PSERS Retirement Contributions	13,421,892.20
250 Unemployment Compensation	17,925.67
260 Workers’ Compensation	142,110.58
270 Group Insurance – Self-Insurance	8,983,057.63
299 All Other Employee Benefits	25,087.50
<b>Total Personnel Services – Employee Benefits</b>	<b>\$25,941,879.52</b>
<b>300 Purchased Professional and Technical Services</b>	
322 Professional Educational Services – Ius	2,007,781.77
323 Professional Educational Services – Other Educational Agencies	11,463.36
329 Professional Educational Services – Other	1,554,348.81
330 Other Professional Services	922,739.50
<b>Total Purchased Professional and Technical Services</b>	<b>\$4,496,333.44</b>
<b>400 Purchased Property Services</b>	
430 Repairs and Maintenance Services	235,716.11
440 Rentals	180,690.24
<b>Total Purchased Property Services</b>	<b>\$416,406.35</b>
<b>500 Other Purchased Services</b>	
510 Student Transportation Services	20,503.02
530 Communications	10,785.92
550 Printing and Binding	9,626.09
561 Tuition To Other School Districts Within the State	47,812.61
562 Tuition To Pennsylvania Charter Schools	2,617,449.12
564 Tuition To Career and Technology Centers	1,987,509.52
567 Tuition To Approved Private Schools (APS) and PA Chartered Schools for the Deaf and Blind	1,178,117.69
568 Tuition To Private Residential Rehabilitative Institutions (PRRI) [In-State] and Detention Centers	677,539.17
569 Tuition – Other	101,474.33
580 Travel	6,906.40
<b>Total Other Purchased Services</b>	<b>\$6,657,723.87</b>
<b>600 Supplies</b>	
610 General Supplies	472,671.61
630 Food	2,112.81
640 Books and Periodicals	611,483.91
650 Supplies & Fees – Technology Related	297,427.08
<b>Total Supplies</b>	<b>\$1,383,695.41</b>
<b>700 Property</b>	
762 Capitalized Equipment - Replacement	20,168.20
<b>Total Property</b>	<b>\$20,168.20</b>

**General Fund (10)**

<b>1000 Instruction</b>	<b><u>Total</u></b>
<b>800 <u>Other Objects</u></b>	
810 Dues and Fees	27,316.65
890 Miscellaneous Expenditures	3,975.85
<b>Total Other Objects</b>	<b>\$31,292.50</b>
<b>Total 1000 Instruction</b>	<b>\$83,835,445.86</b>

**General Fund (10)**

**1100 Regular Programs – Elementary / Secondary**

	<u>Elementary</u>	<u>Secondary</u>	<u>Federal</u>	<u>Total</u>
<b>100 Personnel Services – Salaries</b>				
100 Personnel Services – Salaries	16,540,331.38	15,463,922.24	348,676.82	32,352,930.44
<b>Total Personnel Services – Salaries</b>	<b>\$16,540,331.38</b>	<b>\$15,463,922.24</b>	<b>\$348,676.82</b>	<b>\$32,352,930.44</b>
<b>200 Personnel Services – Employee Benefits</b>				
210 Group Insurance – Contracted Provider	11,884.56	11,498.57	304.77	23,687.90
220 Social Security Contributions	1,224,886.30	1,145,695.25	25,049.64	2,395,631.19
230 PSERS Retirement Contributions	5,005,453.63	4,627,708.43	50,099.38	9,683,261.44
250 Unemployment Compensation	9,255.09	8,659.66		17,914.75
260 Workers' Compensation	73,427.72	68,595.87		142,023.59
270 Group Insurance – Self-Insurance	2,816,357.57	2,627,940.57	100,108.10	5,544,406.24
299 All Other Employee Benefits	5,475.00	10,120.00		15,595.00
<b>Total Personnel Services – Employee Benefits</b>	<b>\$9,146,739.87</b>	<b>\$8,500,218.35</b>	<b>\$175,561.89</b>	<b>\$17,822,520.11</b>
<b>300 Purchased Professional and Technical Services</b>				
322 Professional Educational Services – lus	90.85	54,489.67		54,580.52
323 Professional Educational Services – Other Educational Agencies		4,669.08		4,669.08
329 Professional Educational Services – Other	556,082.05	564,641.74	157.50	1,120,881.29
330 Other Professional Services	1,473.75	161.25	386.00	2,021.00
<b>Total Purchased Professional and Technical Services</b>	<b>\$557,646.65</b>	<b>\$623,961.74</b>	<b>\$543.50</b>	<b>\$1,182,151.89</b>
<b>400 Purchased Property Services</b>				
430 Repairs and Maintenance Services	110,437.40	124,983.21		235,420.61
440 Rentals	93,601.25	87,088.99		180,690.24
<b>Total Purchased Property Services</b>	<b>\$204,038.65</b>	<b>\$212,072.20</b>		<b>\$416,110.85</b>
<b>500 Other Purchased Services</b>				
510 Student Transportation Services	598.10	123.30	1,444.81	2,166.21
530 Communications	4,665.22	6,120.70		10,785.92
550 Printing and Binding	2,136.90	7,489.19		9,626.09
561 Tuition To Other School Districts Within the State		10,850.99		10,850.99
562 Tuition To Pennsylvania Charter Schools	618,383.98	967,916.88		1,586,300.86
568 Tuition To Private Residential Rehabilitative Institutions (PRRI) [In-State] and Detention Centers		8,615.63		8,615.63
580 Travel	987.51	435.99		1,423.50
<b>Total Other Purchased Services</b>	<b>\$626,771.71</b>	<b>\$1,001,552.68</b>	<b>\$1,444.81</b>	<b>\$1,629,769.20</b>
<b>600 Supplies</b>				
610 General Supplies	232,303.63	211,523.83	467.08	444,294.54
630 Food	1,215.46	410.98		1,626.44
640 Books and Periodicals	241,431.98	331,105.95	990.00	573,527.93
650 Supplies & Fees – Technology Related	111,861.38	155,331.05	2,051.90	269,244.33
<b>Total Supplies</b>	<b>\$586,812.45</b>	<b>\$698,371.81</b>	<b>\$3,508.98</b>	<b>\$1,288,693.24</b>
<b>700 Property</b>				
762 Capitalized Equipment - Replacement		20,168.20		20,168.20
<b>Total Property</b>		<b>\$20,168.20</b>		<b>\$20,168.20</b>
<b>800 Other Objects</b>				

General Fund (10)

	<u>Elementary</u>	<u>Secondary</u>	<u>Federal</u>	<u>Total</u>
<b>1100 Regular Programs – Elementary / Secondary</b>				
<b>800 Other Objects</b>				
810 Dues and Fees	9,498.39	17,518.26		27,016.65
890 Miscellaneous Expenditures	294.90	1,689.95	741.00	2,725.85
<b>Total Other Objects</b>	<b>\$9,793.29</b>	<b>\$19,208.21</b>	<b>\$741.00</b>	<b>\$29,742.50</b>
<b>Total 1100 Regular Programs – Elementary / Secondary</b>	<b>\$27,672,134.00</b>	<b>\$26,539,475.43</b>	<b>\$530,477.00</b>	<b>\$54,742,086.43</b>

**General Fund (10)**

**1110 Regular Programs**

	<u>Elementary</u>	<u>Secondary</u>	<u>Federal</u>	<u>Total</u>
<b>100 Personnel Services – Salaries</b>				
100 Personnel Services – Salaries	16,540,331.38	15,463,922.24		32,004,253.62
<b>Total Personnel Services – Salaries</b>	<b>\$16,540,331.38</b>	<b>\$15,463,922.24</b>		<b>\$32,004,253.62</b>
<b>200 Personnel Services – Employee Benefits</b>				
210 Group Insurance – Contracted Provider	11,884.56	11,498.57		23,383.13
220 Social Security Contributions	1,224,886.30	1,145,695.25		2,370,581.55
230 PSERS Retirement Contributions	5,005,453.63	4,627,708.43		9,633,162.06
250 Unemployment Compensation	9,255.09	8,659.66		17,914.75
260 Workers' Compensation	73,427.72	68,595.87		142,023.59
270 Group Insurance – Self-Insurance	2,816,357.57	2,627,940.57		5,444,298.14
299 All Other Employee Benefits	5,475.00	10,120.00		15,595.00
<b>Total Personnel Services – Employee Benefits</b>	<b>\$9,146,739.87</b>	<b>\$8,500,218.35</b>		<b>\$17,646,958.22</b>
<b>300 Purchased Professional and Technical Services</b>				
322 Professional Educational Services – Ius	90.85	54,489.67		54,580.52
323 Professional Educational Services – Other Educational Agencies		4,669.08		4,669.08
329 Professional Educational Services – Other	556,082.05	564,641.74	157.50	1,120,881.29
330 Other Professional Services	1,473.75	161.25	386.00	2,021.00
<b>Total Purchased Professional and Technical Services</b>	<b>\$557,646.65</b>	<b>\$623,961.74</b>	<b>\$543.50</b>	<b>\$1,182,151.89</b>
<b>400 Purchased Property Services</b>				
430 Repairs and Maintenance Services	110,437.40	124,983.21		235,420.61
440 Rentals	93,601.25	87,088.99		180,690.24
<b>Total Purchased Property Services</b>	<b>\$204,038.65</b>	<b>\$212,072.20</b>		<b>\$416,110.85</b>
<b>500 Other Purchased Services</b>				
510 Student Transportation Services	598.10	123.30	1,444.81	2,166.21
530 Communications	4,665.22	6,120.70		10,785.92
550 Printing and Binding	2,136.90	7,489.19		9,626.09
561 Tuition To Other School Districts Within the State		10,850.99		10,850.99
562 Tuition To Pennsylvania Charter Schools	618,383.98	967,916.88		1,586,300.86
568 Tuition To Private Residential Rehabilitative Institutions (PRRI) [In-State] and Detention Centers		8,615.63		8,615.63
580 Travel	987.51	435.99		1,423.50
<b>Total Other Purchased Services</b>	<b>\$626,771.71</b>	<b>\$1,001,552.68</b>	<b>\$1,444.81</b>	<b>\$1,629,769.20</b>
<b>600 Supplies</b>				
610 General Supplies	232,303.63	211,523.83	467.08	444,294.54
630 Food	1,215.46	410.98		1,626.44
640 Books and Periodicals	241,431.98	331,105.95	990.00	573,527.93
650 Supplies & Fees – Technology Related	111,861.38	155,331.05	2,051.90	269,244.33
<b>Total Supplies</b>	<b>\$586,812.45</b>	<b>\$698,371.81</b>	<b>\$3,508.98</b>	<b>\$1,288,693.24</b>
<b>700 Property</b>				
762 Capitalized Equipment - Replacement		20,168.20		20,168.20
<b>Total Property</b>		<b>\$20,168.20</b>		<b>\$20,168.20</b>
<b>800 Other Objects</b>				

LEA : 123467303 Spring-Ford Area SD

Printed 7/18/2018 8:50:05 AM

General Fund (10)

1110 Regular Programs

800 Other Objects

810 Dues and Fees

890 Miscellaneous Expenditures

Total Other Objects

Total 1110 Regular Programs

Elementary

Secondary

Federal

Total

9,498.39

17,518.26

27,016.65

294.90

1,689.95

741.00

2,725.85

\$9,793.29

\$19,208.21

\$741.00

\$29,742.50

\$27,672,134.00

\$26,539,475.43

\$6,238.29

\$54,217,847.72

General Fund (10)

1190 Federally-Funded Regular Programs

Elementary

Secondary

Federal

Total

100 Personnel Services – Salaries

100 Personnel Services – Salaries

348,676.82

348,676.82

**Total Personnel Services – Salaries**

**\$348,676.82**

**\$348,676.82**

200 Personnel Services – Employee Benefits

210 Group Insurance – Contracted Provider

304.77

304.77

220 Social Security Contributions

25,049.64

25,049.64

230 PSERS Retirement Contributions

50,099.38

50,099.38

270 Group Insurance – Self-Insurance

100,108.10

100,108.10

**Total Personnel Services – Employee Benefits**

**\$175,561.89**

**\$175,561.89**

**Total 1190 Federally-Funded Regular Programs**

**\$524,238.71**

**\$524,238.71**

**General Fund (10)**

**1200 Special Programs – Elementary / Secondary**

	<u>Elementary</u>	<u>Secondary</u>	<u>Federal</u>	<u>Total</u>
<b>100 Personnel Services – Salaries</b>				
100 Personnel Services – Salaries	7,252,621.49	5,101,274.08	161,065.56	12,514,961.13
<b>Total Personnel Services – Salaries</b>	<b>\$7,252,621.49</b>	<b>\$5,101,274.08</b>	<b>\$161,065.56</b>	<b>\$12,514,961.13</b>
<b>200 Personnel Services – Employee Benefits</b>				
210 Group Insurance – Contracted Provider	8,762.59	5,323.41		14,086.00
220 Social Security Contributions	532,356.01	372,314.12	12,215.36	916,885.49
230 PSERS Retirement Contributions	2,169,155.08	1,542,221.98	21,163.91	3,732,540.97
270 Group Insurance – Self-Insurance	2,102,265.51	1,336,385.88		3,438,651.39
299 All Other Employee Benefits	4,974.00	4,518.50		9,492.50
<b>Total Personnel Services – Employee Benefits</b>	<b>\$4,817,513.19</b>	<b>\$3,260,763.89</b>	<b>\$33,379.27</b>	<b>\$8,111,656.35</b>
<b>300 Purchased Professional and Technical Services</b>				
322 Professional Educational Services – lus	600,640.50	695,307.27	650,098.48	1,946,046.25
323 Professional Educational Services – Other Educational Agencies		1,230.00		1,230.00
329 Professional Educational Services – Other	303,941.96	126,275.56	3,250.00	433,467.52
330 Other Professional Services	273,407.40	212,877.68	434,433.42	920,718.50
<b>Total Purchased Professional and Technical Services</b>	<b>\$1,177,989.86</b>	<b>\$1,035,690.51</b>	<b>\$1,087,781.90</b>	<b>\$3,301,462.27</b>
<b>400 Purchased Property Services</b>				
430 Repairs and Maintenance Services	231.00	64.50		295.50
<b>Total Purchased Property Services</b>	<b>\$231.00</b>	<b>\$64.50</b>		<b>\$295.50</b>
<b>500 Other Purchased Services</b>				
510 Student Transportation Services	9,532.27	8,804.54		18,336.81
561 Tuition To Other School Districts Within the State	8,520.76	28,440.86		36,961.62
562 Tuition To Pennsylvania Charter Schools	401,828.53	629,319.73		1,031,148.26
567 Tuition To Approved Private Schools (APS) and PA Chartered Schools for the Deaf and Blind	665,125.14	512,992.55		1,178,117.69
568 Tuition To Private Residential Rehabilitative Institutions (PRRI) [In-State] and Detention Centers	90,339.85	576,707.27		667,047.12
569 Tuition – Other	1,630.00	99,844.33		101,474.33
580 Travel	2,516.45	2,966.45		5,482.90
<b>Total Other Purchased Services</b>	<b>\$1,179,493.00</b>	<b>\$1,859,075.73</b>		<b>\$3,038,568.73</b>
<b>600 Supplies</b>				
610 General Supplies	18,545.22	9,831.85		28,377.07
630 Food	32.34	454.03		486.37
640 Books and Periodicals	18,360.03	9,300.49	10,295.46	37,955.98
650 Supplies & Fees – Technology Related	13,635.06	14,547.69		28,182.75
<b>Total Supplies</b>	<b>\$50,572.65</b>	<b>\$34,134.06</b>	<b>\$10,295.46</b>	<b>\$95,002.17</b>
<b>800 Other Objects</b>				
810 Dues and Fees	79.50	220.50		300.00
890 Miscellaneous Expenditures		1,250.00		1,250.00
<b>Total Other Objects</b>	<b>\$79.50</b>	<b>\$1,470.50</b>		<b>\$1,550.00</b>
<b>Total 1200 Special Programs – Elementary / Secondary</b>	<b>\$14,478,500.69</b>	<b>\$11,292,473.27</b>	<b>\$1,292,522.19</b>	<b>\$27,063,496.15</b>

**General Fund (10)**

**1210 Life Skills Support**

	<u>Elementary</u>	<u>Secondary</u>	<u>Federal</u>	<u>Total</u>
<b>100 Personnel Services – Salaries</b>				
100 Personnel Services – Salaries	15.00	271,731.62	3,489.36	275,235.98
<b>Total Personnel Services – Salaries</b>	<b>\$15.00</b>	<b>\$271,731.62</b>	<b>\$3,489.36</b>	<b>\$275,235.98</b>
<b>200 Personnel Services – Employee Benefits</b>				
210 Group Insurance – Contracted Provider		394.80		394.80
220 Social Security Contributions	1.15	20,331.51	265.93	20,598.59
230 PSERS Retirement Contributions	4.50	81,674.62	523.93	82,203.05
270 Group Insurance – Self-Insurance		98,101.93		98,101.93
<b>Total Personnel Services – Employee Benefits</b>	<b>\$5.65</b>	<b>\$200,502.86</b>	<b>\$789.86</b>	<b>\$201,298.37</b>
<b>300 Purchased Professional and Technical Services</b>				
322 Professional Educational Services – Ius	55,969.96	89,382.28	123,505.42	268,857.66
329 Professional Educational Services – Other		3,437.93		3,437.93
330 Other Professional Services		1,379.10		1,379.10
<b>Total Purchased Professional and Technical Services</b>	<b>\$55,969.96</b>	<b>\$94,199.31</b>	<b>\$123,505.42</b>	<b>\$273,674.69</b>
<b>500 Other Purchased Services</b>				
510 Student Transportation Services		1,325.65		1,325.65
567 Tuition To Approved Private Schools (APS) and PA Chartered Schools for the Deaf and Blind		1,565.17		1,565.17
580 Travel		145.50		145.50
<b>Total Other Purchased Services</b>		<b>\$3,036.32</b>		<b>\$3,036.32</b>
<b>600 Supplies</b>				
610 General Supplies		1,173.66		1,173.66
640 Books and Periodicals		40.80		40.80
<b>Total Supplies</b>		<b>\$1,214.46</b>		<b>\$1,214.46</b>
<b>Total 1210 Life Skills Support</b>	<b>\$55,990.61</b>	<b>\$570,684.57</b>	<b>\$127,784.64</b>	<b>\$754,459.82</b>

**General Fund (10)**

	<u>Elementary</u>	<u>Secondary</u>	<u>Federal</u>	<u>Total</u>
<b>1220 Sensory Support</b>				
<b>100 Personnel Services – Salaries</b>				
100 Personnel Services – Salaries	771,192.90	146,300.00	5,745.00	923,237.90
<b>Total Personnel Services – Salaries</b>	<b>\$771,192.90</b>	<b>\$146,300.00</b>	<b>\$5,745.00</b>	<b>\$923,237.90</b>
<b>200 Personnel Services – Employee Benefits</b>				
210 Group Insurance – Contracted Provider	502.90	112.80		615.70
220 Social Security Contributions	56,974.75	10,919.99	433.52	68,328.26
230 PSERS Retirement Contributions	229,457.01	43,895.71	862.61	274,215.33
270 Group Insurance – Self-Insurance	127,908.55	17,691.09		145,599.64
299 All Other Employee Benefits	1,932.00			1,932.00
<b>Total Personnel Services – Employee Benefits</b>	<b>\$416,775.21</b>	<b>\$72,619.59</b>	<b>\$1,296.13</b>	<b>\$490,690.93</b>
<b>300 Purchased Professional and Technical Services</b>				
322 Professional Educational Services – lus	136,942.26	72,723.75	306,626.38	516,292.39
329 Professional Educational Services – Other	7,069.23	1,800.98		8,870.21
330 Other Professional Services	2,497.50	668.43		3,165.93
<b>Total Purchased Professional and Technical Services</b>	<b>\$146,508.99</b>	<b>\$75,193.16</b>	<b>\$306,626.38</b>	<b>\$528,328.53</b>
<b>500 Other Purchased Services</b>				
561 Tuition To Other School Districts Within the State	8,520.76			8,520.76
580 Travel	641.65			641.65
<b>Total Other Purchased Services</b>	<b>\$9,162.41</b>			<b>\$9,162.41</b>
<b>600 Supplies</b>				
610 General Supplies	3,944.15	1,175.16		5,119.31
640 Books and Periodicals	260.56	36.29		296.85
650 Supplies & Fees – Technology Related	7,757.79	243.03		8,000.82
<b>Total Supplies</b>	<b>\$11,962.50</b>	<b>\$1,454.48</b>		<b>\$13,416.98</b>
<b>Total 1220 Sensory Support</b>	<b>\$1,355,602.01</b>	<b>\$295,567.23</b>	<b>\$313,667.51</b>	<b>\$1,964,836.75</b>

**General Fund (10)**

**1230 Emotional Support**

	<u>Elementary</u>	<u>Secondary</u>	<u>Federal</u>	<u>Total</u>
<b>100 Personnel Services – Salaries</b>				
100 Personnel Services – Salaries	1,932,101.74	1,002,451.78	31,337.72	2,965,891.24
<b>Total Personnel Services – Salaries</b>	<b>\$1,932,101.74</b>	<b>\$1,002,451.78</b>	<b>\$31,337.72</b>	<b>\$2,965,891.24</b>
<b>200 Personnel Services – Employee Benefits</b>				
210 Group Insurance – Contracted Provider	3,059.04	1,281.41		4,340.45
220 Social Security Contributions	142,101.49	72,076.23	2,367.93	216,545.65
230 PSERS Retirement Contributions	577,213.58	303,357.17	4,705.37	885,276.12
270 Group Insurance – Self-Insurance	727,971.84	307,531.74		1,035,503.58
299 All Other Employee Benefits		1,550.00		1,550.00
<b>Total Personnel Services – Employee Benefits</b>	<b>\$1,450,345.95</b>	<b>\$685,796.55</b>	<b>\$7,073.30</b>	<b>\$2,143,215.80</b>
<b>300 Purchased Professional and Technical Services</b>				
322 Professional Educational Services – lus	124,323.09	260,084.73	58,428.65	442,836.47
323 Professional Educational Services – Other Educational Agencies		900.00		900.00
329 Professional Educational Services – Other	54,189.70	16,812.43	3,250.00	74,252.13
330 Other Professional Services	232,182.64	135,699.24	21,374.57	389,256.45
<b>Total Purchased Professional and Technical Services</b>	<b>\$410,695.43</b>	<b>\$413,496.40</b>	<b>\$83,053.22</b>	<b>\$907,245.05</b>
<b>500 Other Purchased Services</b>				
510 Student Transportation Services	2,292.44	704.49		2,996.93
561 Tuition To Other School Districts Within the State		28,440.86		28,440.86
568 Tuition To Private Residential Rehabilitative Institutions (PRRI) [In-State] and Detention Centers	86,939.85	531,557.27		618,497.12
569 Tuition – Other	1,630.00			1,630.00
580 Travel	1,270.92	218.34		1,489.26
<b>Total Other Purchased Services</b>	<b>\$92,133.21</b>	<b>\$560,920.96</b>		<b>\$653,054.17</b>
<b>600 Supplies</b>				
610 General Supplies	9,265.35	2,015.53		11,280.88
630 Food	32.34			32.34
640 Books and Periodicals	5,100.35			5,100.35
650 Supplies & Fees – Technology Related	1,091.77	249.99		1,341.76
<b>Total Supplies</b>	<b>\$15,489.81</b>	<b>\$2,265.52</b>		<b>\$17,755.33</b>
<b>800 Other Objects</b>				
810 Dues and Fees	79.50	70.50		150.00
<b>Total Other Objects</b>	<b>\$79.50</b>	<b>\$70.50</b>		<b>\$150.00</b>
<b>Total 1230 Emotional Support</b>	<b>\$3,900,845.64</b>	<b>\$2,665,001.71</b>	<b>\$121,464.24</b>	<b>\$6,687,311.59</b>

**General Fund (10)**

**1240 Academic Support**

	<u>Elementary</u>	<u>Secondary</u>	<u>Federal</u>	<u>Total</u>
<b>100 Personnel Services – Salaries</b>				
100 Personnel Services – Salaries	4,503,681.85	3,680,400.68	117,103.48	8,301,186.01
<b>Total Personnel Services – Salaries</b>	<b>\$4,503,681.85</b>	<b>\$3,680,400.68</b>	<b>\$117,103.48</b>	<b>\$8,301,186.01</b>
<b>200 Personnel Services – Employee Benefits</b>				
210 Group Insurance – Contracted Provider	5,144.25	3,534.40		8,678.65
220 Social Security Contributions	329,839.46	268,956.55	8,890.22	607,686.23
230 PSERS Retirement Contributions	1,348,777.23	1,112,668.35	14,563.00	2,476,008.58
270 Group Insurance – Self-Insurance	1,239,272.00	913,061.12		2,152,333.12
299 All Other Employee Benefits	3,042.00	2,968.50		6,010.50
<b>Total Personnel Services – Employee Benefits</b>	<b>\$2,926,074.94</b>	<b>\$2,301,188.92</b>	<b>\$23,453.22</b>	<b>\$5,250,717.08</b>
<b>300 Purchased Professional and Technical Services</b>				
322 Professional Educational Services – lus		5,341.52		5,341.52
323 Professional Educational Services – Other Educational Agencies		330.00		330.00
329 Professional Educational Services – Other	242,683.03	104,224.22		346,907.25
330 Other Professional Services	22,479.09	66,625.91		89,105.00
<b>Total Purchased Professional and Technical Services</b>	<b>\$265,162.12</b>	<b>\$176,521.65</b>		<b>\$441,683.77</b>
<b>400 Purchased Property Services</b>				
430 Repairs and Maintenance Services	231.00	64.50		295.50
<b>Total Purchased Property Services</b>	<b>\$231.00</b>	<b>\$64.50</b>		<b>\$295.50</b>
<b>500 Other Purchased Services</b>				
510 Student Transportation Services	7,239.83	5,297.69		12,537.52
569 Tuition – Other		99,844.33		99,844.33
580 Travel	603.88	2,602.61		3,206.49
<b>Total Other Purchased Services</b>	<b>\$7,843.71</b>	<b>\$107,744.63</b>		<b>\$115,588.34</b>
<b>600 Supplies</b>				
610 General Supplies	4,787.33	5,382.74		10,170.07
630 Food		454.03		454.03
640 Books and Periodicals	12,999.12	9,223.40	10,295.46	32,517.98
650 Supplies & Fees – Technology Related	3,411.90	13,039.09		16,450.99
<b>Total Supplies</b>	<b>\$21,198.35</b>	<b>\$28,099.26</b>	<b>\$10,295.46</b>	<b>\$59,593.07</b>
<b>800 Other Objects</b>				
810 Dues and Fees		150.00		150.00
890 Miscellaneous Expenditures		1,250.00		1,250.00
<b>Total Other Objects</b>		<b>\$1,400.00</b>		<b>\$1,400.00</b>
<b>Total 1240 Academic Support</b>	<b>\$7,724,191.97</b>	<b>\$6,295,419.64</b>	<b>\$150,852.16</b>	<b>\$14,170,463.77</b>

**General Fund (10)**

	<u>Elementary</u>	<u>Secondary</u>	<u>Federal</u>	<u>Total</u>
<b>1241 Learning Support – Public</b>				
<b>100 Personnel Services – Salaries</b>				
100 Personnel Services – Salaries	4,125,531.85	3,336,200.68	117,103.48	7,578,836.01
<b>Total Personnel Services – Salaries</b>	<b>\$4,125,531.85</b>	<b>\$3,336,200.68</b>	<b>\$117,103.48</b>	<b>\$7,578,836.01</b>
<b>200 Personnel Services – Employee Benefits</b>				
210 Group Insurance – Contracted Provider	4,892.70	3,308.80		8,201.50
220 Social Security Contributions	302,219.86	243,249.69	8,890.22	554,359.77
230 PSERS Retirement Contributions	1,235,218.88	1,009,305.23	14,563.00	2,259,087.11
270 Group Insurance – Self-Insurance	1,160,449.85	854,149.10		2,014,598.95
299 All Other Employee Benefits	3,042.00	2,968.50		6,010.50
<b>Total Personnel Services – Employee Benefits</b>	<b>\$2,705,823.29</b>	<b>\$2,112,981.32</b>	<b>\$23,453.22</b>	<b>\$4,842,257.83</b>
<b>300 Purchased Professional and Technical Services</b>				
322 Professional Educational Services – lus		5,341.52		5,341.52
323 Professional Educational Services – Other Educational Agencies		150.00		150.00
329 Professional Educational Services – Other	240,539.14	99,703.69		340,242.83
330 Other Professional Services	22,479.09	66,625.91		89,105.00
<b>Total Purchased Professional and Technical Services</b>	<b>\$263,018.23</b>	<b>\$171,821.12</b>		<b>\$434,839.35</b>
<b>400 Purchased Property Services</b>				
430 Repairs and Maintenance Services	231.00	64.50		295.50
<b>Total Purchased Property Services</b>	<b>\$231.00</b>	<b>\$64.50</b>		<b>\$295.50</b>
<b>500 Other Purchased Services</b>				
510 Student Transportation Services	7,239.83	4,970.95		12,210.78
569 Tuition – Other		99,844.33		99,844.33
580 Travel	189.84	2,555.61		2,745.45
<b>Total Other Purchased Services</b>	<b>\$7,429.67</b>	<b>\$107,370.89</b>		<b>\$114,800.56</b>
<b>600 Supplies</b>				
610 General Supplies	4,041.76	5,301.53		9,343.29
630 Food		454.03		454.03
640 Books and Periodicals	12,381.45	9,090.63	10,295.46	31,767.54
650 Supplies & Fees – Technology Related	3,411.90	13,039.09		16,450.99
<b>Total Supplies</b>	<b>\$19,835.11</b>	<b>\$27,885.28</b>	<b>\$10,295.46</b>	<b>\$58,015.85</b>
<b>Total 1241 Learning Support – Public</b>	<b>\$7,121,869.15</b>	<b>\$5,756,323.79</b>	<b>\$150,852.16</b>	<b>\$13,029,045.10</b>

**General Fund (10)**

	<u>Elementary</u>	<u>Secondary</u>	<u>Federal</u>	<u>Total</u>
<b>1243 Gifted Support</b>				
<b>100 Personnel Services – Salaries</b>				
100 Personnel Services – Salaries	378,150.00	344,200.00		722,350.00
<b>Total Personnel Services – Salaries</b>	<b>\$378,150.00</b>	<b>\$344,200.00</b>		<b>\$722,350.00</b>
<b>200 Personnel Services – Employee Benefits</b>				
210 Group Insurance – Contracted Provider	251.55	225.60		477.15
220 Social Security Contributions	27,619.60	25,706.86		53,326.46
230 PSERS Retirement Contributions	113,558.35	103,363.12		216,921.47
270 Group Insurance – Self-Insurance	78,822.15	58,912.02		137,734.17
<b>Total Personnel Services – Employee Benefits</b>	<b>\$220,251.65</b>	<b>\$188,207.60</b>		<b>\$408,459.25</b>
<b>300 Purchased Professional and Technical Services</b>				
323 Professional Educational Services – Other Educational Agencies		180.00		180.00
329 Professional Educational Services – Other	2,143.89	4,520.53		6,664.42
<b>Total Purchased Professional and Technical Services</b>	<b>\$2,143.89</b>	<b>\$4,700.53</b>		<b>\$6,844.42</b>
<b>500 Other Purchased Services</b>				
510 Student Transportation Services		326.74		326.74
580 Travel	414.04	47.00		461.04
<b>Total Other Purchased Services</b>	<b>\$414.04</b>	<b>\$373.74</b>		<b>\$787.78</b>
<b>600 Supplies</b>				
610 General Supplies	745.57	81.21		826.78
640 Books and Periodicals	617.67	132.77		750.44
<b>Total Supplies</b>	<b>\$1,363.24</b>	<b>\$213.98</b>		<b>\$1,577.22</b>
<b>800 Other Objects</b>				
810 Dues and Fees		150.00		150.00
890 Miscellaneous Expenditures		1,250.00		1,250.00
<b>Total Other Objects</b>		<b>\$1,400.00</b>		<b>\$1,400.00</b>
<b>Total 1243 Gifted Support</b>	<b>\$602,322.82</b>	<b>\$539,095.85</b>		<b>\$1,141,418.67</b>

**General Fund (10)**

	<u>Elementary</u>	<u>Secondary</u>	<u>Federal</u>	<u>Total</u>
<b>1270 Multi-Handicapped Support</b>				
<b>100 Personnel Services – Salaries</b>				
100 Personnel Services – Salaries	45,630.00	390.00	3,390.00	49,410.00
<b>Total Personnel Services – Salaries</b>	<b>\$45,630.00</b>	<b>\$390.00</b>	<b>\$3,390.00</b>	<b>\$49,410.00</b>
<b>200 Personnel Services – Employee Benefits</b>				
210 Group Insurance – Contracted Provider	56.40			56.40
220 Social Security Contributions	3,439.16	29.84	257.76	3,726.76
230 PSERS Retirement Contributions	13,702.76	626.13	509.00	14,837.89
270 Group Insurance – Self-Insurance	7,113.12			7,113.12
<b>Total Personnel Services – Employee Benefits</b>	<b>\$24,311.44</b>	<b>\$655.97</b>	<b>\$766.76</b>	<b>\$25,734.17</b>
<b>300 Purchased Professional and Technical Services</b>				
322 Professional Educational Services – Ius	37,806.54	92,216.60	89,588.66	219,611.80
330 Other Professional Services	16,248.17	6,345.00	413,058.85	435,652.02
<b>Total Purchased Professional and Technical Services</b>	<b>\$54,054.71</b>	<b>\$98,561.60</b>	<b>\$502,647.51</b>	<b>\$655,263.82</b>
<b>500 Other Purchased Services</b>				
510 Student Transportation Services		1,476.71		1,476.71
<b>Total Other Purchased Services</b>		<b>\$1,476.71</b>		<b>\$1,476.71</b>
<b>600 Supplies</b>				
610 General Supplies	548.39	84.76		633.15
650 Supplies & Fees – Technology Related	595.57	445.67		1,041.24
<b>Total Supplies</b>	<b>\$1,143.96</b>	<b>\$530.43</b>		<b>\$1,674.39</b>
<b>Total 1270 Multi-Handicapped Support</b>	<b>\$125,140.11</b>	<b>\$101,614.71</b>	<b>\$506,804.27</b>	<b>\$733,559.09</b>

General Fund (10)

1280 Early Intervention Support

300 Purchased Professional and Technical Services

322 Professional Educational Services – lus

**Total Purchased Professional and Technical Services**

**Total 1280 Early Intervention Support**

	<u>Elementary</u>	<u>Secondary</u>	<u>Federal</u>	<u>Total</u>
	235,220.52		4,952.00	240,172.52
	<b>\$235,220.52</b>		<b>\$4,952.00</b>	<b>\$240,172.52</b>
	<b>\$235,220.52</b>		<b>\$4,952.00</b>	<b>\$240,172.52</b>

**General Fund (10)**

	<u>Elementary</u>	<u>Secondary</u>	<u>Federal</u>	<u>Total</u>
<b>1290 Special Programs - Other Support</b>				
<b>300 <u>Purchased Professional and Technical Services</u></b>				
322 Professional Educational Services – Ius	10,378.13	175,558.39	66,997.37	252,933.89
330 Other Professional Services		2,160.00		2,160.00
<b>Total Purchased Professional and Technical Services</b>	<b>\$10,378.13</b>	<b>\$177,718.39</b>	<b>\$66,997.37</b>	<b>\$255,093.89</b>
<b>500 <u>Other Purchased Services</u></b>				
562 Tuition To Pennsylvania Charter Schools	401,828.53	629,319.73		1,031,148.26
567 Tuition To Approved Private Schools (APS) and PA Chartered Schools for the Deaf and Blind	665,125.14	511,427.38		1,176,552.52
568 Tuition To Private Residential Rehabilitative Institutions (PRRI) [In-State] and Detention Centers	3,400.00	45,150.00		48,550.00
<b>Total Other Purchased Services</b>	<b>\$1,070,353.67</b>	<b>\$1,185,897.11</b>		<b>\$2,256,250.78</b>
<b>600 <u>Supplies</u></b>				
650 Supplies & Fees – Technology Related	778.03	569.91		1,347.94
<b>Total Supplies</b>	<b>\$778.03</b>	<b>\$569.91</b>		<b>\$1,347.94</b>
<b>Total 1290 Special Programs - Other Support</b>	<b>\$1,081,509.83</b>	<b>\$1,364,185.41</b>	<b>\$66,997.37</b>	<b>\$2,512,692.61</b>

General Fund (10)

1300 Vocational Education

500 Other Purchased Services

564 Tuition To Career and Technology Centers

Total Other Purchased Services

Total 1300 Vocational Education

Elementary

Secondary

Federal

Total

1,987,509.52

1,987,509.52

\$1,987,509.52

\$1,987,509.52

\$1,987,509.52

\$1,987,509.52

**General Fund (10)**

	<u>Elementary</u>	<u>Secondary</u>	<u>Federal</u>	<u>Total</u>
<b>1400 Other Instructional Programs – Elementary / Secondary</b>				
<b>100 Personnel Services – Salaries</b>				
100 Personnel Services – Salaries	6,487.50	13,567.50		20,055.00
<b>Total Personnel Services – Salaries</b>	<b>\$6,487.50</b>	<b>\$13,567.50</b>		<b>\$20,055.00</b>
<b>200 Personnel Services – Employee Benefits</b>				
220 Social Security Contributions	489.22	1,026.14		1,515.36
230 PSERS Retirement Contributions	2,015.44	4,074.35		6,089.79
250 Unemployment Compensation	3.33	7.59		10.92
260 Workers' Compensation	26.51	60.48		86.99
<b>Total Personnel Services – Employee Benefits</b>	<b>\$2,534.50</b>	<b>\$5,168.56</b>		<b>\$7,703.06</b>
<b>300 Purchased Professional and Technical Services</b>				
322 Professional Educational Services – Ius		7,155.00		7,155.00
323 Professional Educational Services – Other Educational Agencies		5,564.28		5,564.28
<b>Total Purchased Professional and Technical Services</b>		<b>\$12,719.28</b>		<b>\$12,719.28</b>
<b>500 Other Purchased Services</b>				
568 Tuition To Private Residential Rehabilitative Institutions (PRRI) [In-State] and Detention Centers		1,876.42		1,876.42
<b>Total Other Purchased Services</b>		<b>\$1,876.42</b>		<b>\$1,876.42</b>
<b>Total 1400 Other Instructional Programs – Elementary / Secondary</b>	<b>\$9,022.00</b>	<b>\$33,331.76</b>		<b>\$42,353.76</b>

**General Fund (10)**

	<u>Elementary</u>	<u>Secondary</u>	<u>Federal</u>	<u>Total</u>
<b>1420 Summer School</b>				
<b>100 Personnel Services – Salaries</b>				
100 Personnel Services – Salaries	3,330.00	4,965.00		8,295.00
<b>Total Personnel Services – Salaries</b>	<b>\$3,330.00</b>	<b>\$4,965.00</b>		<b>\$8,295.00</b>
<b>200 Personnel Services – Employee Benefits</b>				
220 Social Security Contributions	254.49	378.76		633.25
230 PSERS Retirement Contributions	1,067.22	1,490.99		2,558.21
250 Unemployment Compensation	1.56	2.78		4.34
260 Workers' Compensation	12.44	22.13		34.57
<b>Total Personnel Services – Employee Benefits</b>	<b>\$1,335.71</b>	<b>\$1,894.66</b>		<b>\$3,230.37</b>
<b>Total 1420 Summer School</b>	<b>\$4,665.71</b>	<b>\$6,859.66</b>		<b>\$11,525.37</b>

**General Fund (10)**

	<u>Elementary</u>	<u>Secondary</u>	<u>Federal</u>	<u>Total</u>
<b>1430 Homebound Instruction</b>				
<b>100 Personnel Services – Salaries</b>				
100 Personnel Services – Salaries	3,157.50	8,602.50		11,760.00
<b>Total Personnel Services – Salaries</b>	<b>\$3,157.50</b>	<b>\$8,602.50</b>		<b>\$11,760.00</b>
<b>200 Personnel Services – Employee Benefits</b>				
220 Social Security Contributions	234.73	647.38		882.11
230 PSERS Retirement Contributions	948.22	2,583.36		3,531.58
250 Unemployment Compensation	1.77	4.81		6.58
260 Workers' Compensation	14.07	38.35		52.42
<b>Total Personnel Services – Employee Benefits</b>	<b>\$1,198.79</b>	<b>\$3,273.90</b>		<b>\$4,472.69</b>
<b>300 Purchased Professional and Technical Services</b>				
323 Professional Educational Services – Other Educational Agencies		5,564.28		5,564.28
<b>Total Purchased Professional and Technical Services</b>		<b>\$5,564.28</b>		<b>\$5,564.28</b>
<b>Total 1430 Homebound Instruction</b>	<b>\$4,356.29</b>	<b>\$17,440.68</b>		<b>\$21,796.97</b>

General Fund (10)

	<u>Elementary</u>	<u>Secondary</u>	<u>Federal</u>	<u>Total</u>
<b>1440 Alternative Regular Education Programs</b>				
<b>300 <u>Purchased Professional and Technical Services</u></b>				
322 Professional Educational Services – Ius		7,155.00		7,155.00
<b>Total Purchased Professional and Technical Services</b>		<b>\$7,155.00</b>		<b>\$7,155.00</b>
<b>500 <u>Other Purchased Services</u></b>				
568 Tuition To Private Residential Rehabilitative Institutions (PRRI) [In-State] and Detention Centers		1,876.42		1,876.42
<b>Total Other Purchased Services</b>		<b>\$1,876.42</b>		<b>\$1,876.42</b>
<b>Total 1440 Alternative Regular Education Programs</b>		<b>\$9,031.42</b>		<b>\$9,031.42</b>

General Fund (10)

1441 Adjudicated / Court-Placed Programs

Elementary

Secondary

Federal

Total

300 Purchased Professional and Technical Services

322 Professional Educational Services – lus

7,155.00

7,155.00

**Total Purchased Professional and Technical Services**

**\$7,155.00**

**\$7,155.00**

**Total 1441 Adjudicated / Court-Placed Programs**

**\$7,155.00**

**\$7,155.00**

General Fund (10)

1442 Alternative Education Programs

Elementary

Secondary

Federal

Total

500 Other Purchased Services

568 Tuition To Private Residential Rehabilitative Institutions (PRRI) [In-State] and Detention Centers

1,876.42

1,876.42

**Total Other Purchased Services**

**\$1,876.42**

**\$1,876.42**

**Total 1442 Alternative Education Programs**

**\$1,876.42**

**\$1,876.42**

General Fund (10)

2000 Support Services

Total

100 Personnel Services – Salaries

100 Personnel Services – Salaries 15,793,372.87

Total Personnel Services – Salaries \$15,793,372.87

200 Personnel Services – Employee Benefits

210 Group Insurance – Contracted Provider 21,364.59

220 Social Security Contributions 1,154,032.27

230 PSERS Retirement Contributions 4,674,255.51

240 Tuition Reimbursement 134,584.75

250 Unemployment Compensation 8,014.41

260 Workers' Compensation 63,697.32

270 Group Insurance – Self-Insurance 3,293,212.58

299 All Other Employee Benefits 17,903.50

Total Personnel Services – Employee Benefits \$9,367,064.93

300 Purchased Professional and Technical Services

322 Professional Educational Services – Ius 123,359.75

324 Professional Educational Services – Employee Training and Development Services 105,491.11

329 Professional Educational Services – Other 158,558.59

330 Other Professional Services 1,906,401.22

340 Technical Services 173,998.60

350 Security / Safety Services 27,770.00

390 Other Purchased Professional and Technical Services 2,322.19

Total Purchased Professional and Technical Services \$2,497,901.46

400 Purchased Property Services

410 Cleaning Services 1,898,272.78

420 Utility Services 224,973.55

430 Repairs and Maintenance Services 727,018.51

440 Rentals 993,042.92

450 Construction Services 8,898.75

460 Extermination Services 3,276.00

Total Purchased Property Services \$3,855,482.51

500 Other Purchased Services

511 Student Transportation Services from Another LEA Within the State 10,792.72

513 Contracted Carriers 6,878,218.40

516 Student Transportation Services From the IU 264,760.77

520 Insurance – General 116,998.00

522 Automotive Liability Insurance 52,330.00

523 General Property and Liability Insurance 252,789.00

530 Communications 206,180.26

541 Advertising Related to Federal Grant Awards 275.00

549 Other Advertising/Public Relations 7,211.45

550 Printing and Binding 11,763.14

580 Travel 27,901.83

595 IU Payments By Withholding 106,645.46

596 Direct Payments To Intermediate Units 8,495.00

General Fund (10)

2000 Support Services

Total

**Total Other Purchased Services \$7,944,361.03**

600 Supplies

610 General Supplies	895,055.98
620 Energy	1,582,202.00
630 Food	11,983.05
640 Books and Periodicals	55,005.24
650 Supplies & Fees – Technology Related	722,157.24

**Total Supplies \$3,266,403.51**

700 Property

752 Capital Equipment – Original and Additional	81,855.11
758 Capitalized Technology Software - Original	56,515.00
762 Capitalized Equipment - Replacement	14,238.00
768 Capitalized Technology Software - Replacement	469.00

**Total Property \$153,077.11**

800 Other Objects

810 Dues and Fees	60,382.86
-------------------	-----------

**Total Other Objects \$60,382.86**

**Total 2000 Support Services \$42,938,046.28**

**General Fund (10)**

**2100 Support Services – Students**

**100 Personnel Services – Salaries**

	<u>Elementary</u>	<u>Secondary</u>	<u>Federal</u>	<u>Total</u>
100 Personnel Services – Salaries	1,314,889.27	1,519,382.97		2,979,042.79
<b>Total Personnel Services – Salaries</b>	<b>\$1,314,889.27</b>	<b>\$1,519,382.97</b>		<b>\$2,979,042.79</b>

**200 Personnel Services – Employee Benefits**

210 Group Insurance – Contracted Provider	1,069.49	1,431.11		2,613.40
220 Social Security Contributions	97,612.78	112,040.99		220,437.77
230 PSERS Retirement Contributions	392,542.55	452,591.19		888,608.32
250 Unemployment Compensation	519.65	660.93		1,261.95
260 Workers' Compensation	4,122.89	5,244.03		10,012.56
270 Group Insurance – Self-Insurance	242,843.48	344,652.64		610,817.05
<b>Total Personnel Services – Employee Benefits</b>	<b>\$738,710.84</b>	<b>\$916,620.89</b>		<b>\$1,733,751.05</b>

**300 Purchased Professional and Technical Services**

322 Professional Educational Services – Ius	297.58	1,089.56	1,919.15	3,306.29
329 Professional Educational Services – Other	10,044.98			10,044.98
330 Other Professional Services	209,274.04	188,091.45		397,365.49
<b>Total Purchased Professional and Technical Services</b>	<b>\$219,616.60</b>	<b>\$189,181.01</b>	<b>\$1,919.15</b>	<b>\$410,716.76</b>

**500 Other Purchased Services**

530 Communications				484.91
550 Printing and Binding	14.98	1,519.00		1,533.98
580 Travel	247.43	219.42		910.79
<b>Total Other Purchased Services</b>	<b>\$262.41</b>	<b>\$1,738.42</b>		<b>\$2,929.68</b>

**600 Supplies**

610 General Supplies	80,926.15	66,478.11		147,404.26
640 Books and Periodicals	1,403.41			1,403.41
650 Supplies & Fees – Technology Related	19,144.65	5,887.49		25,032.14
<b>Total Supplies</b>	<b>\$101,474.21</b>	<b>\$72,365.60</b>		<b>\$173,839.81</b>

**800 Other Objects**

810 Dues and Fees		625.00		625.00
<b>Total Other Objects</b>		<b>\$625.00</b>		<b>\$625.00</b>

<b>Total 2100 Support Services – Students</b>	<b>\$2,374,953.33</b>	<b>\$2,699,913.89</b>	<b>\$1,919.15</b>	<b>\$5,300,905.09</b>
---	-----------------------	-----------------------	-------------------	-----------------------

**General Fund (10)**

**2120 Guidance Services**

	<u>Elementary</u>	<u>Secondary</u>	<u>Federal</u>	<u>Total</u>
<b>100 Personnel Services – Salaries</b>				
100 Personnel Services – Salaries	930,886.04	1,178,851.81		2,109,737.85
<b>Total Personnel Services – Salaries</b>	<b>\$930,886.04</b>	<b>\$1,178,851.81</b>		<b>\$2,109,737.85</b>
<b>200 Personnel Services – Employee Benefits</b>				
210 Group Insurance – Contracted Provider	775.50	1,170.40		1,945.90
220 Social Security Contributions	68,888.69	86,568.68		155,457.37
230 PSERS Retirement Contributions	277,743.80	350,788.53		628,532.33
250 Unemployment Compensation	519.65	660.93		1,180.58
260 Workers' Compensation	4,122.89	5,244.03		9,366.92
270 Group Insurance – Self-Insurance	172,363.63	282,151.63		454,515.26
<b>Total Personnel Services – Employee Benefits</b>	<b>\$524,414.16</b>	<b>\$726,584.20</b>		<b>\$1,250,998.36</b>
<b>300 Purchased Professional and Technical Services</b>				
329 Professional Educational Services – Other	10,044.98			10,044.98
330 Other Professional Services	143,212.76	127,000.00		270,212.76
<b>Total Purchased Professional and Technical Services</b>	<b>\$153,257.74</b>	<b>\$127,000.00</b>		<b>\$280,257.74</b>
<b>500 Other Purchased Services</b>				
550 Printing and Binding	14.98	1,519.00		1,533.98
<b>Total Other Purchased Services</b>	<b>\$14.98</b>	<b>\$1,519.00</b>		<b>\$1,533.98</b>
<b>600 Supplies</b>				
610 General Supplies	7,326.21	338.64		7,664.85
640 Books and Periodicals	1,403.41			1,403.41
650 Supplies & Fees – Technology Related		5,887.49		5,887.49
<b>Total Supplies</b>	<b>\$8,729.62</b>	<b>\$6,226.13</b>		<b>\$14,955.75</b>
<b>800 Other Objects</b>				
810 Dues and Fees		625.00		625.00
<b>Total Other Objects</b>		<b>\$625.00</b>		<b>\$625.00</b>
<b>Total 2120 Guidance Services</b>	<b>\$1,617,302.54</b>	<b>\$2,040,806.14</b>		<b>\$3,658,108.68</b>

**General Fund (10)**

	<u>Elementary</u>	<u>Secondary</u>	<u>Federal</u>	<u>Total</u>
<b>2140 Psychological Services</b>				
<b>100 Personnel Services – Salaries</b>				
100 Personnel Services – Salaries	384,003.23	340,531.16		724,534.39
<b>Total Personnel Services – Salaries</b>	<b>\$384,003.23</b>	<b>\$340,531.16</b>		<b>\$724,534.39</b>
<b>200 Personnel Services – Employee Benefits</b>				
210 Group Insurance – Contracted Provider	293.99	260.71		554.70
220 Social Security Contributions	28,724.09	25,472.31		54,196.40
230 PSERS Retirement Contributions	114,798.75	101,802.66		216,601.41
270 Group Insurance – Self-Insurance	70,479.85	62,501.01		132,980.86
<b>Total Personnel Services – Employee Benefits</b>	<b>\$214,296.68</b>	<b>\$190,036.69</b>		<b>\$404,333.37</b>
<b>300 Purchased Professional and Technical Services</b>				
322 Professional Educational Services – lus	94.67	94.67	1,253.97	1,443.31
330 Other Professional Services	66,061.28	59,554.89		125,616.17
<b>Total Purchased Professional and Technical Services</b>	<b>\$66,155.95</b>	<b>\$59,649.56</b>	<b>\$1,253.97</b>	<b>\$127,059.48</b>
<b>500 Other Purchased Services</b>				
580 Travel	247.43	219.42		466.85
<b>Total Other Purchased Services</b>	<b>\$247.43</b>	<b>\$219.42</b>		<b>\$466.85</b>
<b>600 Supplies</b>				
610 General Supplies	73,599.94	66,139.47		139,739.41
650 Supplies & Fees – Technology Related	19,144.65			19,144.65
<b>Total Supplies</b>	<b>\$92,744.59</b>	<b>\$66,139.47</b>		<b>\$158,884.06</b>
<b>Total 2140 Psychological Services</b>	<b>\$757,447.88</b>	<b>\$656,576.30</b>	<b>\$1,253.97</b>	<b>\$1,415,278.15</b>

General Fund (10)

2150 Speech Pathology and Audiology Services

300 Purchased Professional and Technical Services

322 Professional Educational Services – lus

330 Other Professional Services

Total Purchased Professional and Technical Services

Total 2150 Speech Pathology and Audiology Services

Elementary

Secondary

Federal

Total

202.91

994.89

665.18

1,862.98

1,536.56

1,536.56

\$202.91

\$2,531.45

\$665.18

\$3,399.54

\$202.91

\$2,531.45

\$665.18

\$3,399.54

General Fund (10)

2160 Social Work Services

Elementary

Secondary

Federal

Total

100 Personnel Services – Salaries

100 Personnel Services – Salaries

97,000.00

**Total Personnel Services – Salaries**

**\$97,000.00**

200 Personnel Services – Employee Benefits

210 Group Insurance – Contracted Provider

56.40

220 Social Security Contributions

7,307.62

230 PSERS Retirement Contributions

29,129.09

250 Unemployment Compensation

54.52

260 Workers' Compensation

432.60

270 Group Insurance – Self-Insurance

15,463.03

**Total Personnel Services – Employee Benefits**

**\$52,443.26**

500 Other Purchased Services

530 Communications

409.91

580 Travel

443.94

**Total Other Purchased Services**

**\$853.85**

**Total 2160 Social Work Services**

**\$150,297.11**

General Fund (10)

2170 Student Accounting Services

Elementary                      Secondary                      Federal                      Total

100 Personnel Services – Salaries

100 Personnel Services – Salaries 47,770.55

**Total Personnel Services – Salaries \$47,770.55**

200 Personnel Services – Employee Benefits

210 Group Insurance – Contracted Provider 56.40

220 Social Security Contributions 3,476.38

230 PSERS Retirement Contributions 14,345.49

250 Unemployment Compensation 26.85

260 Workers' Compensation 213.04

270 Group Insurance – Self-Insurance 7,857.90

**Total Personnel Services – Employee Benefits \$25,976.06**

500 Other Purchased Services

530 Communications 75.00

**Total Other Purchased Services \$75.00**

**Total 2170 Student Accounting Services \$73,821.61**

**General Fund (10)**

	<u>Elementary</u>	<u>Secondary</u>	<u>Federal</u>	<u>Total</u>
<b>2200 Support Services – Instructional Staff</b>				
<b>100 Personnel Services – Salaries</b>				
100 Personnel Services – Salaries	1,871,604.93	1,111,716.28	3,240.00	2,986,561.21
<b>Total Personnel Services – Salaries</b>	<b>\$1,871,604.93</b>	<b>\$1,111,716.28</b>	<b>\$3,240.00</b>	<b>\$2,986,561.21</b>
<b>200 Personnel Services – Employee Benefits</b>				
210 Group Insurance – Contracted Provider	2,000.29	1,249.97		3,250.26
220 Social Security Contributions	139,182.19	82,516.60		221,698.79
230 PSERS Retirement Contributions	559,271.48	330,843.68		890,115.16
240 Tuition Reimbursement	57,750.75	26,962.00		84,712.75
250 Unemployment Compensation	852.85	445.25		1,298.10
260 Workers' Compensation	6,881.51	3,532.88		10,414.39
270 Group Insurance – Self-Insurance	330,134.23	148,695.18		478,829.41
299 All Other Employee Benefits		2,755.50		2,755.50
<b>Total Personnel Services – Employee Benefits</b>	<b>\$1,096,073.30</b>	<b>\$597,001.06</b>		<b>\$1,693,074.36</b>
<b>300 Purchased Professional and Technical Services</b>				
322 Professional Educational Services – Ius	30,252.40	26,827.60		57,080.00
324 Professional Educational Services – Employee Training and Development Services	8,134.66	13,240.79	63,974.51	85,349.96
329 Professional Educational Services – Other	51,336.86	48,351.49	721.90	100,410.25
<b>Total Purchased Professional and Technical Services</b>	<b>\$89,723.92</b>	<b>\$88,419.88</b>	<b>\$64,696.41</b>	<b>\$242,840.21</b>
<b>500 Other Purchased Services</b>				
530 Communications	4,719.25	4,184.99		8,904.24
549 Other Advertising/Public Relations	808.91	717.34		1,526.25
580 Travel	3,226.54	6,149.70	201.92	9,578.16
<b>Total Other Purchased Services</b>	<b>\$8,754.70</b>	<b>\$11,052.03</b>	<b>\$201.92</b>	<b>\$20,008.65</b>
<b>600 Supplies</b>				
610 General Supplies	12,947.24	8,070.57		21,017.81
630 Food	1,101.17	976.50		2,077.67
640 Books and Periodicals	36,653.50	13,134.01		49,787.51
650 Supplies & Fees – Technology Related	103,948.32	43,300.48		147,248.80
<b>Total Supplies</b>	<b>\$154,650.23</b>	<b>\$65,481.56</b>		<b>\$220,131.79</b>
<b>700 Property</b>				
752 Capital Equipment – Original and Additional	14,725.15	13,058.16		27,783.31
<b>Total Property</b>	<b>\$14,725.15</b>	<b>\$13,058.16</b>		<b>\$27,783.31</b>
<b>800 Other Objects</b>				
810 Dues and Fees	1,991.74	1,766.26		3,758.00
<b>Total Other Objects</b>	<b>\$1,991.74</b>	<b>\$1,766.26</b>		<b>\$3,758.00</b>
<b>Total 2200 Support Services – Instructional Staff</b>	<b>\$3,237,523.97</b>	<b>\$1,888,495.23</b>	<b>\$68,138.33</b>	<b>\$5,194,157.53</b>

General Fund (10)

2220 Technology Support Services

600 Supplies  
650 Supplies & Fees – Technology Related

	<u>Elementary</u>	<u>Secondary</u>	<u>Federal</u>	<u>Total</u>
650 Supplies & Fees – Technology Related	3,002.58	1,332.98		4,335.56
<b>Total Supplies</b>	<b>\$3,002.58</b>	<b>\$1,332.98</b>		<b>\$4,335.56</b>
<b>Total 2220 Technology Support Services</b>	<b>\$3,002.58</b>	<b>\$1,332.98</b>		<b>\$4,335.56</b>

**General Fund (10)**

	<u>Elementary</u>	<u>Secondary</u>	<u>Federal</u>	<u>Total</u>
<b>2250 School Library Services</b>				
<b>100 Personnel Services – Salaries</b>				
100 Personnel Services – Salaries	747,258.02	449,100.00		1,196,358.02
<b>Total Personnel Services – Salaries</b>	<b>\$747,258.02</b>	<b>\$449,100.00</b>		<b>\$1,196,358.02</b>
<b>200 Personnel Services – Employee Benefits</b>				
210 Group Insurance – Contracted Provider	507.60	282.00		789.60
220 Social Security Contributions	55,844.98	33,009.34		88,854.32
230 PSERS Retirement Contributions	223,496.28	134,864.59		358,360.87
250 Unemployment Compensation	403.86	252.43		656.29
260 Workers' Compensation	3,319.13	2,002.89		5,322.02
270 Group Insurance – Self-Insurance	152,151.08	56,800.21		208,951.29
<b>Total Personnel Services – Employee Benefits</b>	<b>\$435,722.93</b>	<b>\$227,211.46</b>		<b>\$662,934.39</b>
<b>300 Purchased Professional and Technical Services</b>				
329 Professional Educational Services – Other	12,331.23	13,914.84		26,246.07
<b>Total Purchased Professional and Technical Services</b>	<b>\$12,331.23</b>	<b>\$13,914.84</b>		<b>\$26,246.07</b>
<b>600 Supplies</b>				
610 General Supplies	5,169.96	1,173.74		6,343.70
640 Books and Periodicals	35,746.35	12,329.55		48,075.90
650 Supplies & Fees – Technology Related	18,013.28	22,233.32		40,246.60
<b>Total Supplies</b>	<b>\$58,929.59</b>	<b>\$35,736.61</b>		<b>\$94,666.20</b>
<b>Total 2250 School Library Services</b>	<b>\$1,254,241.77</b>	<b>\$725,962.91</b>		<b>\$1,980,204.68</b>

**General Fund (10)**

**2260 Instruction and Curriculum Development Services**

	<u>Elementary</u>	<u>Secondary</u>	<u>Federal</u>	<u>Total</u>
<b>100 Personnel Services – Salaries</b>				
100 Personnel Services – Salaries	551,965.15	521,876.11		1,073,841.26
<b>Total Personnel Services – Salaries</b>	<b>\$551,965.15</b>	<b>\$521,876.11</b>		<b>\$1,073,841.26</b>
<b>200 Personnel Services – Employee Benefits</b>				
210 Group Insurance – Contracted Provider	1,041.91	864.15		1,906.06
220 Social Security Contributions	41,086.70	38,957.53		80,044.23
230 PSERS Retirement Contributions	164,774.16	154,033.82		318,807.98
250 Unemployment Compensation	129.88	115.17		245.05
260 Workers' Compensation	1,030.49	913.85		1,944.34
270 Group Insurance – Self-Insurance	95,337.77	76,474.69		171,812.46
299 All Other Employee Benefits		2,755.50		2,755.50
<b>Total Personnel Services – Employee Benefits</b>	<b>\$303,400.91</b>	<b>\$274,114.71</b>		<b>\$577,515.62</b>
<b>300 Purchased Professional and Technical Services</b>				
322 Professional Educational Services – lus	30,252.40	26,827.60		57,080.00
324 Professional Educational Services – Employee Training and Development Services	103.35	91.65	450.00	645.00
329 Professional Educational Services – Other	26,685.57	23,664.56		50,350.13
<b>Total Purchased Professional and Technical Services</b>	<b>\$57,041.32</b>	<b>\$50,583.81</b>	<b>\$450.00</b>	<b>\$108,075.13</b>
<b>500 Other Purchased Services</b>				
530 Communications	4,719.25	4,184.99		8,904.24
549 Other Advertising/Public Relations	808.91	717.34		1,526.25
580 Travel	2,305.75	1,753.13		4,058.88
<b>Total Other Purchased Services</b>	<b>\$7,833.91</b>	<b>\$6,655.46</b>		<b>\$14,489.37</b>
<b>600 Supplies</b>				
610 General Supplies	6,464.62	5,732.78		12,197.40
630 Food	98.65	87.48		186.13
640 Books and Periodicals	862.82	765.15		1,627.97
650 Supplies & Fees – Technology Related	82,932.46	19,734.18		102,666.64
<b>Total Supplies</b>	<b>\$90,358.55</b>	<b>\$26,319.59</b>		<b>\$116,678.14</b>
<b>700 Property</b>				
752 Capital Equipment – Original and Additional	14,725.15	13,058.16		27,783.31
<b>Total Property</b>	<b>\$14,725.15</b>	<b>\$13,058.16</b>		<b>\$27,783.31</b>
<b>800 Other Objects</b>				
810 Dues and Fees	401.74	356.26		758.00
<b>Total Other Objects</b>	<b>\$401.74</b>	<b>\$356.26</b>		<b>\$758.00</b>
<b>Total 2260 Instruction and Curriculum Development Services</b>	<b>\$1,025,726.73</b>	<b>\$892,964.10</b>	<b>\$450.00</b>	<b>\$1,919,140.83</b>

**General Fund (10)**

2270 Instructional Staff Professional Development Services	<u>Elementary</u>	<u>Secondary</u>	<u>Federal</u>	<u>Total</u>
<b>100 Personnel Services – Salaries</b>				
100 Personnel Services – Salaries	572,381.76	140,740.17	3,240.00	716,361.93
<b>Total Personnel Services – Salaries</b>	<b>\$572,381.76</b>	<b>\$140,740.17</b>	<b>\$3,240.00</b>	<b>\$716,361.93</b>
<b>200 Personnel Services – Employee Benefits</b>				
210 Group Insurance – Contracted Provider	450.78	103.82		554.60
220 Social Security Contributions	42,250.51	10,549.73		52,800.24
230 PSERS Retirement Contributions	171,001.04	41,945.27		212,946.31
240 Tuition Reimbursement	57,750.75	26,962.00		84,712.75
250 Unemployment Compensation	319.11	77.65		396.76
260 Workers' Compensation	2,531.89	616.14		3,148.03
270 Group Insurance – Self-Insurance	82,645.38	15,420.28		98,065.66
<b>Total Personnel Services – Employee Benefits</b>	<b>\$356,949.46</b>	<b>\$95,674.89</b>		<b>\$452,624.35</b>
<b>300 Purchased Professional and Technical Services</b>				
324 Professional Educational Services – Employee Training and Development Services	8,031.31	13,149.14	63,524.51	84,704.96
329 Professional Educational Services – Other	12,320.06	10,772.09	721.90	23,814.05
<b>Total Purchased Professional and Technical Services</b>	<b>\$20,351.37</b>	<b>\$23,921.23</b>	<b>\$64,246.41</b>	<b>\$108,519.01</b>
<b>500 Other Purchased Services</b>				
580 Travel	920.79	4,396.57	201.92	5,519.28
<b>Total Other Purchased Services</b>	<b>\$920.79</b>	<b>\$4,396.57</b>	<b>\$201.92</b>	<b>\$5,519.28</b>
<b>600 Supplies</b>				
610 General Supplies	1,312.66	1,164.05		2,476.71
630 Food	1,002.52	889.02		1,891.54
640 Books and Periodicals	44.33	39.31		83.64
<b>Total Supplies</b>	<b>\$2,359.51</b>	<b>\$2,092.38</b>		<b>\$4,451.89</b>
<b>800 Other Objects</b>				
810 Dues and Fees	1,590.00	1,410.00		3,000.00
<b>Total Other Objects</b>	<b>\$1,590.00</b>	<b>\$1,410.00</b>		<b>\$3,000.00</b>
<b>Total 2270 Instructional Staff Professional Development Services</b>	<b>\$954,552.89</b>	<b>\$268,235.24</b>	<b>\$67,688.33</b>	<b>\$1,290,476.46</b>

**General Fund (10)**

	<u>Elementary</u>	<u>Secondary</u>	<u>Federal</u>	<u>Total</u>
<b>2300 Support Services – Administration</b>				
<b>100 Personnel Services – Salaries</b>				
100 Personnel Services – Salaries	1,743,003.19	1,736,529.98		4,209,918.29
<b>Total Personnel Services – Salaries</b>	<b>\$1,743,003.19</b>	<b>\$1,736,529.98</b>		<b>\$4,209,918.29</b>
<b>200 Personnel Services – Employee Benefits</b>				
210 Group Insurance – Contracted Provider	3,176.22	3,287.04		7,674.36
220 Social Security Contributions	125,501.48	123,678.68		299,584.27
230 PSERS Retirement Contributions	515,828.58	509,666.57		1,223,011.66
250 Unemployment Compensation	972.58	969.32		2,351.59
260 Workers' Compensation	7,717.27	7,690.72		18,658.63
270 Group Insurance – Self-Insurance	333,891.18	316,424.95		748,337.60
299 All Other Employee Benefits				10,557.00
<b>Total Personnel Services – Employee Benefits</b>	<b>\$987,087.31</b>	<b>\$961,717.28</b>		<b>\$2,310,175.11</b>
<b>300 Purchased Professional and Technical Services</b>				
324 Professional Educational Services – Employee Training and Development Services		150.00		1,900.60
330 Other Professional Services				423,179.87
340 Technical Services				1,017.14
350 Security / Safety Services				1,606.00
390 Other Purchased Professional and Technical Services				1,518.52
<b>Total Purchased Professional and Technical Services</b>		<b>\$150.00</b>		<b>\$429,222.13</b>
<b>500 Other Purchased Services</b>				
520 Insurance – General				116,998.00
530 Communications	5,161.79	5,906.62		24,879.12
549 Other Advertising/Public Relations				1,433.32
550 Printing and Binding				8,905.65
580 Travel	1,073.25	1,495.61		7,134.60
<b>Total Other Purchased Services</b>	<b>\$6,235.04</b>	<b>\$7,402.23</b>		<b>\$159,350.69</b>
<b>600 Supplies</b>				
610 General Supplies	2,641.85	513.54		38,702.63
630 Food	126.93	1,754.35		9,403.66
640 Books and Periodicals	1,865.87	79.00		3,532.41
650 Supplies & Fees – Technology Related	167.00			1,157.91
<b>Total Supplies</b>	<b>\$4,801.65</b>	<b>\$2,346.89</b>		<b>\$52,796.61</b>
<b>800 Other Objects</b>				
810 Dues and Fees	5,871.50	6,574.50		44,651.01
<b>Total Other Objects</b>	<b>\$5,871.50</b>	<b>\$6,574.50</b>		<b>\$44,651.01</b>
<b>Total 2300 Support Services – Administration</b>	<b>\$2,746,998.69</b>	<b>\$2,714,720.88</b>		<b>\$7,206,113.84</b>

General Fund (10)

2310 Board Services

Elementary

Secondary

Federal

Total

100 Personnel Services – Salaries

100 Personnel Services – Salaries 7,131.77

**Total Personnel Services – Salaries \$7,131.77**

200 Personnel Services – Employee Benefits

220 Social Security Contributions 531.76

230 PSERS Retirement Contributions 2,141.67

250 Unemployment Compensation 4.00

260 Workers' Compensation 31.80

**Total Personnel Services – Employee Benefits \$2,709.23**

300 Purchased Professional and Technical Services

324 Professional Educational Services – Employee Training and Development Services 1,330.60

**Total Purchased Professional and Technical Services \$1,330.60**

500 Other Purchased Services

520 Insurance – General 116,998.00

530 Communications 26.00

549 Other Advertising/Public Relations 1,433.32

550 Printing and Binding 134.74

580 Travel 1,642.87

**Total Other Purchased Services \$120,234.93**

600 Supplies

610 General Supplies 530.68

630 Food 869.12

640 Books and Periodicals 250.00

**Total Supplies \$1,649.80**

800 Other Objects

810 Dues and Fees 13,895.00

**Total Other Objects \$13,895.00**

**Total 2310 Board Services \$146,951.33**

**General Fund (10)**

	<u>Elementary</u>	<u>Secondary</u>	<u>Federal</u>	<u>Total</u>
<b>2330 Tax Assessment and Collection Services</b>				
<b>100 Personnel Services – Salaries</b>				
100 Personnel Services – Salaries				52,871.70
<b>Total Personnel Services – Salaries</b>				<b>\$52,871.70</b>
<b>200 Personnel Services – Employee Benefits</b>				
220 Social Security Contributions				6,281.66
250 Unemployment Compensation				29.72
260 Workers’ Compensation				235.79
<b>Total Personnel Services – Employee Benefits</b>				<b>\$6,547.17</b>
<b>300 Purchased Professional and Technical Services</b>				
330 Other Professional Services				203,308.17
340 Technical Services				1,017.14
390 Other Purchased Professional and Technical Services				1,258.52
<b>Total Purchased Professional and Technical Services</b>				<b>\$205,583.83</b>
<b>500 Other Purchased Services</b>				
530 Communications				12,919.85
550 Printing and Binding				5,671.74
<b>Total Other Purchased Services</b>				<b>\$18,591.59</b>
<b>600 Supplies</b>				
610 General Supplies				4,721.18
650 Supplies & Fees – Technology Related				591.66
<b>Total Supplies</b>				<b>\$5,312.84</b>
<b>Total 2330 Tax Assessment and Collection Services</b>				<b>\$288,907.13</b>

General Fund (10)

2350 Legal and Accounting Services

Elementary

Secondary

Federal

Total

300 Purchased Professional and Technical Services

330 Other Professional Services

219,871.70

**Total Purchased Professional and Technical Services**

**\$219,871.70**

**Total 2350 Legal and Accounting Services**

**\$219,871.70**

**General Fund (10)**

	<u>Elementary</u>	<u>Secondary</u>	<u>Federal</u>	<u>Total</u>
<b>2360 Office of the Superintendent / Executive Director Services</b>				
<b>100 Personnel Services – Salaries</b>				
100 Personnel Services – Salaries				516,322.13
<b>Total Personnel Services – Salaries</b>				<b>\$516,322.13</b>
<b>200 Personnel Services – Employee Benefits</b>				
210 Group Insurance – Contracted Provider				898.08
220 Social Security Contributions				31,847.60
230 PSERS Retirement Contributions				152,414.79
250 Unemployment Compensation				289.37
260 Workers' Compensation				2,295.98
270 Group Insurance – Self-Insurance				73,445.69
299 All Other Employee Benefits				10,557.00
<b>Total Personnel Services – Employee Benefits</b>				<b>\$271,748.51</b>
<b>300 Purchased Professional and Technical Services</b>				
324 Professional Educational Services – Employee Training and Development Services				420.00
390 Other Purchased Professional and Technical Services				260.00
<b>Total Purchased Professional and Technical Services</b>				<b>\$680.00</b>
<b>500 Other Purchased Services</b>				
530 Communications	725.88	643.70		1,369.58
550 Printing and Binding				76.12
580 Travel				2,622.78
<b>Total Other Purchased Services</b>	<b>\$725.88</b>	<b>\$643.70</b>		<b>\$4,068.48</b>
<b>600 Supplies</b>				
610 General Supplies				3,522.20
630 Food				4,310.72
640 Books and Periodicals				1,337.54
650 Supplies & Fees – Technology Related				228.00
<b>Total Supplies</b>				<b>\$9,398.46</b>
<b>800 Other Objects</b>				
810 Dues and Fees				13,103.00
<b>Total Other Objects</b>				<b>\$13,103.00</b>
<b>Total 2360 Office of the Superintendent / Executive Director Services</b>	<b>\$725.88</b>	<b>\$643.70</b>		<b>\$815,320.58</b>

General Fund (10)

2370 Community Relations Services

Elementary

Secondary

Federal

Total

100 Personnel Services – Salaries

100 Personnel Services – Salaries

154,059.52

**Total Personnel Services – Salaries**

**\$154,059.52**

200 Personnel Services – Employee Benefits

210 Group Insurance – Contracted Provider

313.02

220 Social Security Contributions

11,743.09

230 PSERS Retirement Contributions

42,960.05

250 Unemployment Compensation

86.60

260 Workers' Compensation

687.07

270 Group Insurance – Self-Insurance

24,575.78

**Total Personnel Services – Employee Benefits**

**\$80,365.61**

500 Other Purchased Services

530 Communications

864.86

550 Printing and Binding

98.66

580 Travel

300.09

**Total Other Purchased Services**

**\$1,263.61**

600 Supplies

610 General Supplies

4,403.08

630 Food

50.29

650 Supplies & Fees – Technology Related

99.00

**Total Supplies**

**\$4,552.37**

800 Other Objects

810 Dues and Fees

190.00

**Total Other Objects**

**\$190.00**

**Total 2370 Community Relations Services**

**\$240,431.11**

**General Fund (10)**

**2380 Office of the Principal Services**

	<u>Elementary</u>	<u>Secondary</u>	<u>Federal</u>	<u>Total</u>
<b>100 Personnel Services – Salaries</b>				
100 Personnel Services – Salaries	1,743,003.19	1,736,529.98		3,479,533.17
<b>Total Personnel Services – Salaries</b>	<b>\$1,743,003.19</b>	<b>\$1,736,529.98</b>		<b>\$3,479,533.17</b>
<b>200 Personnel Services – Employee Benefits</b>				
210 Group Insurance – Contracted Provider	3,176.22	3,287.04		6,463.26
220 Social Security Contributions	125,501.48	123,678.68		249,180.16
230 PSERS Retirement Contributions	515,828.58	509,666.57		1,025,495.15
250 Unemployment Compensation	972.58	969.32		1,941.90
260 Workers' Compensation	7,717.27	7,690.72		15,407.99
270 Group Insurance – Self-Insurance	333,891.18	316,424.95		650,316.13
<b>Total Personnel Services – Employee Benefits</b>	<b>\$987,087.31</b>	<b>\$961,717.28</b>		<b>\$1,948,804.59</b>
<b>300 Purchased Professional and Technical Services</b>				
324 Professional Educational Services – Employee Training and Development Services		150.00		150.00
<b>Total Purchased Professional and Technical Services</b>		<b>\$150.00</b>		<b>\$150.00</b>
<b>500 Other Purchased Services</b>				
530 Communications	4,435.91	5,262.92		9,698.83
580 Travel	1,073.25	1,495.61		2,568.86
<b>Total Other Purchased Services</b>	<b>\$5,509.16</b>	<b>\$6,758.53</b>		<b>\$12,267.69</b>
<b>600 Supplies</b>				
610 General Supplies	2,641.85	513.54		3,155.39
630 Food	126.93	1,754.35		1,881.28
640 Books and Periodicals	1,865.87	79.00		1,944.87
650 Supplies & Fees – Technology Related	167.00			167.00
<b>Total Supplies</b>	<b>\$4,801.65</b>	<b>\$2,346.89</b>		<b>\$7,148.54</b>
<b>800 Other Objects</b>				
810 Dues and Fees	5,871.50	6,574.50		12,446.00
<b>Total Other Objects</b>	<b>\$5,871.50</b>	<b>\$6,574.50</b>		<b>\$12,446.00</b>
<b>Total 2380 Office of the Principal Services</b>	<b>\$2,746,272.81</b>	<b>\$2,714,077.18</b>		<b>\$5,460,349.99</b>

General Fund (10)

	<u>Elementary</u>	<u>Secondary</u>	<u>Federal</u>	<u>Total</u>
<b>2390 Other Administration Services</b>				
<b>300 <u>Purchased Professional and Technical Services</u></b>				
350 Security / Safety Services				1,606.00
<b>Total Purchased Professional and Technical Services</b>				<b>\$1,606.00</b>
<b>500 <u>Other Purchased Services</u></b>				
550 Printing and Binding				2,924.39
<b>Total Other Purchased Services</b>				<b>\$2,924.39</b>
<b>600 <u>Supplies</u></b>				
610 General Supplies				22,370.10
630 Food				2,292.25
650 Supplies & Fees – Technology Related				72.25
<b>Total Supplies</b>				<b>\$24,734.60</b>
<b>800 <u>Other Objects</u></b>				
810 Dues and Fees				5,017.01
<b>Total Other Objects</b>				<b>\$5,017.01</b>
<b>Total 2390 Other Administration Services</b>				<b>\$34,282.00</b>

**General Fund (10)**

	<u>Elementary</u>	<u>Secondary</u>	<u>Federal</u>	<u>Total</u>
<b>2400 Support Services – Pupil Health</b>				
<b>100 Personnel Services – Salaries</b>				
100 Personnel Services – Salaries			3,465.00	768,879.69
<b>Total Personnel Services – Salaries</b>			<b>\$3,465.00</b>	<b>\$768,879.69</b>
<b>200 Personnel Services – Employee Benefits</b>				
210 Group Insurance – Contracted Provider				827.20
220 Social Security Contributions			262.78	56,506.13
230 PSERS Retirement Contributions			520.27	230,849.32
250 Unemployment Compensation				415.12
260 Workers' Compensation				3,294.34
270 Group Insurance – Self-Insurance				232,877.56
<b>Total Personnel Services – Employee Benefits</b>			<b>\$783.05</b>	<b>\$524,769.67</b>
<b>300 Purchased Professional and Technical Services</b>				
322 Professional Educational Services – Ius			30,671.31	62,973.46
324 Professional Educational Services – Employee Training and Development Services				2,500.00
329 Professional Educational Services – Other				48,103.36
330 Other Professional Services			272,840.35	1,025,662.50
<b>Total Purchased Professional and Technical Services</b>			<b>\$303,511.66</b>	<b>\$1,139,239.32</b>
<b>400 Purchased Property Services</b>				
430 Repairs and Maintenance Services				443.00
<b>Total Purchased Property Services</b>				<b>\$443.00</b>
<b>500 Other Purchased Services</b>				
530 Communications				265.00
<b>Total Other Purchased Services</b>				<b>\$265.00</b>
<b>600 Supplies</b>				
610 General Supplies				15,973.02
630 Food				314.22
<b>Total Supplies</b>				<b>\$16,287.24</b>
<b>Total 2400 Support Services – Pupil Health</b>			<b>\$307,759.71</b>	<b>\$2,449,883.92</b>

General Fund (10)

2420 Medical Services

Elementary

Secondary

Federal

Total

300 Purchased Professional and Technical Services

322 Professional Educational Services – lus

30,671.31

62,973.46

330 Other Professional Services

241,966.15

689,928.15

**Total Purchased Professional and Technical Services**

**\$272,637.46**

**\$752,901.61**

600 Supplies

610 General Supplies

467.92

**Total Supplies**

**\$467.92**

**Total 2420 Medical Services**

**\$272,637.46**

**\$753,369.53**

**General Fund (10)**

**2430 Dental Services**

	<u>Elementary</u>	<u>Secondary</u>	<u>Federal</u>	<u>Total</u>
<b>100 Personnel Services – Salaries</b>				
100 Personnel Services – Salaries				161.93
<b>Total Personnel Services – Salaries</b>				<b>\$161.93</b>
<b>200 Personnel Services – Employee Benefits</b>				
220 Social Security Contributions				12.38
230 PSERS Retirement Contributions				11.44
250 Unemployment Compensation				0.05
260 Workers' Compensation				0.68
<b>Total Personnel Services – Employee Benefits</b>				<b>\$24.55</b>
<b>300 Purchased Professional and Technical Services</b>				
330 Other Professional Services				1,745.00
<b>Total Purchased Professional and Technical Services</b>				<b>\$1,745.00</b>
<b>600 Supplies</b>				
610 General Supplies				2,657.00
<b>Total Supplies</b>				<b>\$2,657.00</b>
<b>Total 2430 Dental Services</b>				<b>\$4,588.48</b>

**General Fund (10)**

**2440 Nursing Services**

	<u>Elementary</u>	<u>Secondary</u>	<u>Federal</u>	<u>Total</u>
<b>100 Personnel Services – Salaries</b>				
100 Personnel Services – Salaries			3,465.00	704,691.35
<b>Total Personnel Services – Salaries</b>			<b>\$3,465.00</b>	<b>\$704,691.35</b>
<b>200 Personnel Services – Employee Benefits</b>				
210 Group Insurance – Contracted Provider				770.80
220 Social Security Contributions			262.78	51,683.80
230 PSERS Retirement Contributions			520.27	211,610.86
250 Unemployment Compensation				394.09
260 Workers' Compensation				3,127.18
270 Group Insurance – Self-Insurance				225,269.79
<b>Total Personnel Services – Employee Benefits</b>			<b>\$783.05</b>	<b>\$492,856.52</b>
<b>300 Purchased Professional and Technical Services</b>				
329 Professional Educational Services – Other				27,690.17
330 Other Professional Services			30,874.20	333,989.35
<b>Total Purchased Professional and Technical Services</b>			<b>\$30,874.20</b>	<b>\$361,679.52</b>
<b>400 Purchased Property Services</b>				
430 Repairs and Maintenance Services				443.00
<b>Total Purchased Property Services</b>				<b>\$443.00</b>
<b>500 Other Purchased Services</b>				
530 Communications				265.00
<b>Total Other Purchased Services</b>				<b>\$265.00</b>
<b>600 Supplies</b>				
610 General Supplies				9,748.10
<b>Total Supplies</b>				<b>\$9,748.10</b>
<b>Total 2440 Nursing Services</b>			<b>\$35,122.25</b>	<b>\$1,569,683.49</b>

General Fund (10)

2450 Nonpublic Health Services

Elementary

Secondary

Federal

Total

100 Personnel Services – Salaries

100 Personnel Services – Salaries

37,329.78

**Total Personnel Services – Salaries**

**\$37,329.78**

200 Personnel Services – Employee Benefits

210 Group Insurance – Contracted Provider

56.40

220 Social Security Contributions

2,835.68

230 PSERS Retirement Contributions

11,210.09

250 Unemployment Compensation

20.98

260 Workers' Compensation

166.48

270 Group Insurance – Self-Insurance

7,607.77

**Total Personnel Services – Employee Benefits**

**\$21,897.40**

**Total 2450 Nonpublic Health Services**

**\$59,227.18**

General Fund (10)

	<u>Elementary</u>	<u>Secondary</u>	<u>Federal</u>	<u>Total</u>
<b>2490 Other Health Services</b>				
<b>100 Personnel Services – Salaries</b>				
100 Personnel Services – Salaries				26,696.63
<b>Total Personnel Services – Salaries</b>				<b>\$26,696.63</b>
<b>200 Personnel Services – Employee Benefits</b>				
220 Social Security Contributions				1,974.27
230 PSERS Retirement Contributions				8,016.93
<b>Total Personnel Services – Employee Benefits</b>				<b>\$9,991.20</b>
<b>300 Purchased Professional and Technical Services</b>				
324 Professional Educational Services – Employee Training and Development Services				2,500.00
329 Professional Educational Services – Other				20,413.19
<b>Total Purchased Professional and Technical Services</b>				<b>\$22,913.19</b>
<b>600 Supplies</b>				
610 General Supplies				3,100.00
630 Food				314.22
<b>Total Supplies</b>				<b>\$3,414.22</b>
<b>Total 2490 Other Health Services</b>				<b>\$63,015.24</b>

**General Fund (10)**

	<u>Elementary</u>	<u>Secondary</u>	<u>Federal</u>	<u>Total</u>
<b>2500 Support Services – Business</b>				
<b>100 Personnel Services – Salaries</b>				
100 Personnel Services – Salaries			43,194.77	658,514.32
<b>Total Personnel Services – Salaries</b>			<b>\$43,194.77</b>	<b>\$658,514.32</b>
<b>200 Personnel Services – Employee Benefits</b>				
210 Group Insurance – Contracted Provider			56.40	1,183.04
220 Social Security Contributions			3,240.72	47,595.78
230 PSERS Retirement Contributions			6,485.71	194,152.77
250 Unemployment Compensation				344.98
260 Workers' Compensation				2,737.55
270 Group Insurance – Self-Insurance			6,151.36	125,587.88
299 All Other Employee Benefits				1,094.00
<b>Total Personnel Services – Employee Benefits</b>			<b>\$15,934.19</b>	<b>\$372,696.00</b>
<b>300 Purchased Professional and Technical Services</b>				
340 Technical Services				2,108.88
390 Other Purchased Professional and Technical Services				803.67
<b>Total Purchased Professional and Technical Services</b>				<b>\$2,912.55</b>
<b>400 Purchased Property Services</b>				
430 Repairs and Maintenance Services				3,178.26
440 Rentals				3,744.00
<b>Total Purchased Property Services</b>				<b>\$6,922.26</b>
<b>500 Other Purchased Services</b>				
530 Communications				8,007.00
549 Other Advertising/Public Relations				1,937.95
580 Travel			62.05	263.51
<b>Total Other Purchased Services</b>			<b>\$62.05</b>	<b>\$10,208.46</b>
<b>600 Supplies</b>				
610 General Supplies				6,901.80
650 Supplies & Fees – Technology Related				6,300.00
<b>Total Supplies</b>				<b>\$13,201.80</b>
<b>800 Other Objects</b>				
810 Dues and Fees				4,702.99
<b>Total Other Objects</b>				<b>\$4,702.99</b>
<b>Total 2500 Support Services – Business</b>			<b>\$59,191.01</b>	<b>\$1,069,158.38</b>

**General Fund (10)**

**2510 Fiscal Services**

	<u>Elementary</u>	<u>Secondary</u>	<u>Federal</u>	<u>Total</u>
<b>100 Personnel Services – Salaries</b>				
100 Personnel Services – Salaries			43,194.77	562,388.93
<b>Total Personnel Services – Salaries</b>			<b>\$43,194.77</b>	<b>\$562,388.93</b>
<b>200 Personnel Services – Employee Benefits</b>				
210 Group Insurance – Contracted Provider			56.40	1,012.66
220 Social Security Contributions			3,240.72	40,428.45
230 PSERS Retirement Contributions			6,485.71	166,340.09
250 Unemployment Compensation				291.79
260 Workers' Compensation				2,315.43
270 Group Insurance – Self-Insurance			6,151.36	114,383.36
299 All Other Employee Benefits				1,094.00
<b>Total Personnel Services – Employee Benefits</b>			<b>\$15,934.19</b>	<b>\$325,865.78</b>
<b>500 Other Purchased Services</b>				
530 Communications				1,150.92
549 Other Advertising/Public Relations				314.41
580 Travel			62.05	226.40
<b>Total Other Purchased Services</b>			<b>\$62.05</b>	<b>\$1,691.73</b>
<b>600 Supplies</b>				
610 General Supplies				928.33
<b>Total Supplies</b>				<b>\$928.33</b>
<b>800 Other Objects</b>				
810 Dues and Fees				2,512.12
<b>Total Other Objects</b>				<b>\$2,512.12</b>
<b>Total 2510 Fiscal Services</b>			<b>\$59,191.01</b>	<b>\$893,386.89</b>

General Fund (10)

	<u>Elementary</u>	<u>Secondary</u>	<u>Federal</u>	<u>Total</u>
<b>2511 Supervision of Fiscal Services - Head of Component</b>				
<b>100 Personnel Services – Salaries</b>				
100 Personnel Services – Salaries				148,537.50
<b>Total Personnel Services – Salaries</b>				<b>\$148,537.50</b>
<b>200 Personnel Services – Employee Benefits</b>				
210 Group Insurance – Contracted Provider				282.00
220 Social Security Contributions				9,548.14
230 PSERS Retirement Contributions				44,305.55
250 Unemployment Compensation				83.49
260 Workers' Compensation				662.44
270 Group Insurance – Self-Insurance				18,271.24
<b>Total Personnel Services – Employee Benefits</b>				<b>\$73,152.86</b>
<b>500 Other Purchased Services</b>				
530 Communications				475.95
580 Travel				1.27
<b>Total Other Purchased Services</b>				<b>\$477.22</b>
<b>800 Other Objects</b>				
810 Dues and Fees				230.00
<b>Total Other Objects</b>				<b>\$230.00</b>
<b>Total 2511 Supervision of Fiscal Services - Head of Component</b>				<b>\$222,397.58</b>

**General Fund (10)**

	<u>Elementary</u>	<u>Secondary</u>	<u>Federal</u>	<u>Total</u>
<b>2512 Budgeting Services</b>				
<b>100 Personnel Services – Salaries</b>				
100 Personnel Services – Salaries				46,756.88
<b>Total Personnel Services – Salaries</b>				<b>\$46,756.88</b>
<b>200 Personnel Services – Employee Benefits</b>				
210 Group Insurance – Contracted Provider				92.62
220 Social Security Contributions				3,520.30
230 PSERS Retirement Contributions				13,890.89
250 Unemployment Compensation				26.28
260 Workers' Compensation				208.52
270 Group Insurance – Self-Insurance				7,038.27
<b>Total Personnel Services – Employee Benefits</b>				<b>\$24,776.88</b>
<b>500 Other Purchased Services</b>				
530 Communications				352.03
549 Other Advertising/Public Relations				314.41
<b>Total Other Purchased Services</b>				<b>\$666.44</b>
<b>600 Supplies</b>				
610 General Supplies				15.50
<b>Total Supplies</b>				<b>\$15.50</b>
<b>800 Other Objects</b>				
810 Dues and Fees				115.00
<b>Total Other Objects</b>				<b>\$115.00</b>
<b>Total 2512 Budgeting Services</b>				<b>\$72,330.70</b>

General Fund (10)

2513 Receiving and Disbursing Funds Services

Elementary

Secondary

Federal

Total

100 Personnel Services – Salaries

100 Personnel Services – Salaries

45,885.96

**Total Personnel Services – Salaries**

**\$45,885.96**

200 Personnel Services – Employee Benefits

210 Group Insurance – Contracted Provider

56.40

220 Social Security Contributions

3,167.92

230 PSERS Retirement Contributions

13,338.73

250 Unemployment Compensation

25.78

260 Workers' Compensation

204.62

270 Group Insurance – Self-Insurance

18,203.64

**Total Personnel Services – Employee Benefits**

**\$34,997.09**

**Total 2513 Receiving and Disbursing Funds Services**

**\$80,883.05**

**General Fund (10)**

**2514 Payroll Services**

**100 Personnel Services – Salaries**

	<u>Elementary</u>	<u>Secondary</u>	<u>Federal</u>	<u>Total</u>
100 Personnel Services – Salaries				52,707.30
<b>Total Personnel Services – Salaries</b>				<b>\$52,707.30</b>
<b>200 Personnel Services – Employee Benefits</b>				
210 Group Insurance – Contracted Provider				114.00
220 Social Security Contributions				3,997.64
230 PSERS Retirement Contributions				15,827.98
250 Unemployment Compensation				29.62
260 Workers' Compensation				235.06
270 Group Insurance – Self-Insurance				17,314.52
299 All Other Employee Benefits				1,094.00
<b>Total Personnel Services – Employee Benefits</b>				<b>\$38,612.82</b>
<b>600 Supplies</b>				
610 General Supplies				203.95
<b>Total Supplies</b>				<b>\$203.95</b>
<b>Total 2514 Payroll Services</b>				<b>\$91,524.07</b>

General Fund (10)

2515 Financial Accounting Services

Elementary

Secondary

Federal

Total

100 Personnel Services – Salaries

100 Personnel Services – Salaries

91,108.80

**Total Personnel Services – Salaries**

**\$91,108.80**

200 Personnel Services – Employee Benefits

210 Group Insurance – Contracted Provider

169.20

220 Social Security Contributions

6,914.56

230 PSERS Retirement Contributions

27,359.98

250 Unemployment Compensation

51.21

260 Workers' Compensation

406.32

270 Group Insurance – Self-Insurance

7,474.35

**Total Personnel Services – Employee Benefits**

**\$42,375.62**

500 Other Purchased Services

580 Travel

163.08

**Total Other Purchased Services**

**\$163.08**

**Total 2515 Financial Accounting Services**

**\$133,647.50**

**General Fund (10)**

	<u>Elementary</u>	<u>Secondary</u>	<u>Federal</u>	<u>Total</u>
<b>2516 Internal Auditing Services</b>				
<b>100 Personnel Services – Salaries</b>				
100 Personnel Services – Salaries				45,756.87
<b>Total Personnel Services – Salaries</b>				<b>\$45,756.87</b>
<b>200 Personnel Services – Employee Benefits</b>				
210 Group Insurance – Contracted Provider				109.34
220 Social Security Contributions				3,445.44
230 PSERS Retirement Contributions				13,590.59
250 Unemployment Compensation				25.72
260 Workers' Compensation				204.06
270 Group Insurance – Self-Insurance				9,786.50
<b>Total Personnel Services – Employee Benefits</b>				<b>\$27,161.65</b>
<b>500 Other Purchased Services</b>				
530 Communications				322.94
<b>Total Other Purchased Services</b>				<b>\$322.94</b>
<b>600 Supplies</b>				
610 General Supplies				15.48
<b>Total Supplies</b>				<b>\$15.48</b>
<b>800 Other Objects</b>				
810 Dues and Fees				334.00
<b>Total Other Objects</b>				<b>\$334.00</b>
<b>Total 2516 Internal Auditing Services</b>				<b>\$73,590.94</b>

General Fund (10)

2517 Property Accounting Services

Elementary

Secondary

Federal

Total

100 Personnel Services – Salaries

100 Personnel Services – Salaries

26,073.75

**Total Personnel Services – Salaries**

**\$26,073.75**

200 Personnel Services – Employee Benefits

210 Group Insurance – Contracted Provider

52.80

220 Social Security Contributions

1,986.90

230 PSERS Retirement Contributions

7,830.13

250 Unemployment Compensation

14.65

260 Workers' Compensation

116.28

270 Group Insurance – Self-Insurance

3,307.67

**Total Personnel Services – Employee Benefits**

**\$13,308.43**

600 Supplies

610 General Supplies

8.04

**Total Supplies**

**\$8.04**

**Total 2517 Property Accounting Services**

**\$39,390.22**

**General Fund (10)**

**2519 Other Fiscal Services**

**100 Personnel Services – Salaries**

	<u>Elementary</u>	<u>Secondary</u>	<u>Federal</u>	<u>Total</u>
100 Personnel Services – Salaries			43,194.77	105,561.87
<b>Total Personnel Services – Salaries</b>			<b>\$43,194.77</b>	<b>\$105,561.87</b>

**200 Personnel Services – Employee Benefits**

210 Group Insurance – Contracted Provider			56.40	136.30
220 Social Security Contributions			3,240.72	7,847.55
230 PSERS Retirement Contributions			6,485.71	30,196.24
250 Unemployment Compensation				35.04
260 Workers' Compensation				278.13
270 Group Insurance – Self-Insurance			6,151.36	32,987.17
<b>Total Personnel Services – Employee Benefits</b>			<b>\$15,934.19</b>	<b>\$71,480.43</b>

**500 Other Purchased Services**

580 Travel			62.05	62.05
<b>Total Other Purchased Services</b>			<b>\$62.05</b>	<b>\$62.05</b>

**600 Supplies**

610 General Supplies				685.36
<b>Total Supplies</b>				<b>\$685.36</b>

**800 Other Objects**

810 Dues and Fees				1,833.12
<b>Total Other Objects</b>				<b>\$1,833.12</b>

**Total 2519 Other Fiscal Services**

			<b>\$59,191.01</b>	<b>\$179,622.83</b>
--	--	--	--------------------	---------------------

**General Fund (10)**

**2520 Purchasing Services**

	<u>Elementary</u>	<u>Secondary</u>	<u>Federal</u>	<u>Total</u>
--	-------------------	------------------	----------------	--------------

**100 Personnel Services – Salaries**

100 Personnel Services – Salaries				26,073.75
-----------------------------------	--	--	--	-----------

<b>Total Personnel Services – Salaries</b>				<b>\$26,073.75</b>
--	--	--	--	--------------------

**200 Personnel Services – Employee Benefits**

210 Group Insurance – Contracted Provider				62.28
---	--	--	--	-------

220 Social Security Contributions				1,986.47
-----------------------------------	--	--	--	----------

230 PSERS Retirement Contributions				7,829.87
------------------------------------	--	--	--	----------

250 Unemployment Compensation				14.65
-------------------------------	--	--	--	-------

260 Workers' Compensation				116.28
---------------------------	--	--	--	--------

270 Group Insurance – Self-Insurance				4,195.73
--------------------------------------	--	--	--	----------

<b>Total Personnel Services – Employee Benefits</b>				<b>\$14,205.28</b>
---	--	--	--	--------------------

**500 Other Purchased Services**

549 Other Advertising/Public Relations				67.38
--	--	--	--	-------

580 Travel				37.11
------------	--	--	--	-------

<b>Total Other Purchased Services</b>				<b>\$104.49</b>
---------------------------------------	--	--	--	-----------------

**600 Supplies**

610 General Supplies				83.60
----------------------	--	--	--	-------

<b>Total Supplies</b>				<b>\$83.60</b>
-----------------------	--	--	--	----------------

**800 Other Objects**

810 Dues and Fees				300.00
-------------------	--	--	--	--------

<b>Total Other Objects</b>				<b>\$300.00</b>
----------------------------	--	--	--	-----------------

<b>Total 2520 Purchasing Services</b>				<b>\$40,767.12</b>
---------------------------------------	--	--	--	--------------------

General Fund (10)

	<u>Elementary</u>	<u>Secondary</u>	<u>Federal</u>	<u>Total</u>
<b>2530 Warehousing and Distributing Services</b>				
<b>100 Personnel Services – Salaries</b>				
100 Personnel Services – Salaries				36,103.40
<b>Total Personnel Services – Salaries</b>				<b>\$36,103.40</b>
<b>200 Personnel Services – Employee Benefits</b>				
210 Group Insurance – Contracted Provider				51.70
220 Social Security Contributions				2,583.77
230 PSERS Retirement Contributions				10,238.64
250 Unemployment Compensation				20.30
260 Workers' Compensation				161.13
270 Group Insurance – Self-Insurance				7,008.79
<b>Total Personnel Services – Employee Benefits</b>				<b>\$20,064.33</b>
<b>300 Purchased Professional and Technical Services</b>				
340 Technical Services				2,108.88
<b>Total Purchased Professional and Technical Services</b>				<b>\$2,108.88</b>
<b>500 Other Purchased Services</b>				
530 Communications				653.61
<b>Total Other Purchased Services</b>				<b>\$653.61</b>
<b>Total 2530 Warehousing and Distributing Services</b>				<b>\$58,930.22</b>

General Fund (10)

2540 Printing, Publishing and Duplicating Services

Elementary

Secondary

Federal

Total

100 Personnel Services – Salaries

100 Personnel Services – Salaries

33,948.24

**Total Personnel Services – Salaries**

**\$33,948.24**

200 Personnel Services – Employee Benefits

210 Group Insurance – Contracted Provider

56.40

220 Social Security Contributions

2,597.09

230 PSERS Retirement Contributions

9,744.17

250 Unemployment Compensation

18.24

260 Workers' Compensation

144.71

**Total Personnel Services – Employee Benefits**

**\$12,560.61**

600 Supplies

610 General Supplies

4,629.41

650 Supplies & Fees – Technology Related

6,300.00

**Total Supplies**

**\$10,929.41**

**Total 2540 Printing, Publishing and Duplicating Services**

**\$57,438.26**

General Fund (10)

2590 Other Support Services – Business

Elementary

Secondary

Federal

Total

300 Purchased Professional and Technical Services

390 Other Purchased Professional and Technical Services

803.67

**Total Purchased Professional and Technical Services**

**\$803.67**

400 Purchased Property Services

430 Repairs and Maintenance Services

3,178.26

440 Rentals

3,744.00

**Total Purchased Property Services**

**\$6,922.26**

500 Other Purchased Services

530 Communications

6,202.47

549 Other Advertising/Public Relations

1,556.16

**Total Other Purchased Services**

**\$7,758.63**

600 Supplies

610 General Supplies

1,260.46

**Total Supplies**

**\$1,260.46**

800 Other Objects

810 Dues and Fees

1,890.87

**Total Other Objects**

**\$1,890.87**

**Total 2590 Other Support Services – Business**

**\$18,635.89**



General Fund (10)

2600 Operation and Maintenance of Plant Services

Elementary

Secondary

Federal

Total

800 Other Objects

810 Dues and Fees

1,443.74

**Total Other Objects**

**\$1,443.74**

**Total 2600 Operation and Maintenance of Plant Services**

**\$346,898.79**

**\$314,769.01**

**\$10,229,049.76**

**General Fund (10)**

	<u>Elementary</u>	<u>Secondary</u>	<u>Federal</u>	<u>Total</u>
<b>2610 Supervision of Operation and Maintenance of Plant Services</b>				
<b>100 <u>Personnel Services – Salaries</u></b>				
100 Personnel Services – Salaries				257,477.19
<b>Total Personnel Services – Salaries</b>				<b>\$257,477.19</b>
<b>200 <u>Personnel Services – Employee Benefits</u></b>				
210 Group Insurance – Contracted Provider				534.60
220 Social Security Contributions				18,887.90
230 PSERS Retirement Contributions				76,269.24
250 Unemployment Compensation				143.87
260 Workers' Compensation				1,141.59
270 Group Insurance – Self-Insurance				36,665.02
<b>Total Personnel Services – Employee Benefits</b>				<b>\$133,642.22</b>
<b>500 <u>Other Purchased Services</u></b>				
530 Communications				749.15
<b>Total Other Purchased Services</b>				<b>\$749.15</b>
<b>600 <u>Supplies</u></b>				
640 Books and Periodicals				281.91
<b>Total Supplies</b>				<b>\$281.91</b>
<b>800 <u>Other Objects</u></b>				
810 Dues and Fees				460.00
<b>Total Other Objects</b>				<b>\$460.00</b>
<b>Total 2610 Supervision of Operation and Maintenance of Plant Services</b>				<b>\$392,610.47</b>

General Fund (10)

2611 Supervision of Operation and Maintenance of Plant Services – Head of Component

Elementary

Secondary

Federal

Total

100 Personnel Services – Salaries

100 Personnel Services – Salaries 166,864.99

**Total Personnel Services – Salaries \$166,864.99**

200 Personnel Services – Employee Benefits

210 Group Insurance – Contracted Provider 336.12

220 Social Security Contributions 12,138.64

230 PSERS Retirement Contributions 49,358.77

250 Unemployment Compensation 92.94

260 Workers' Compensation 737.48

270 Group Insurance – Self-Insurance 19,592.31

**Total Personnel Services – Employee Benefits \$82,256.26**

500 Other Purchased Services

530 Communications 273.20

**Total Other Purchased Services \$273.20**

600 Supplies

640 Books and Periodicals 281.91

**Total Supplies \$281.91**

**Total 2611 Supervision of Operation and Maintenance of Plant Services – Head of Component \$249,676.36**

General Fund (10)

2619 Supervision of Operation and Maintenance of Plant Services – All Other Supervision

Elementary

Secondary

Federal

Total

100 Personnel Services – Salaries

100 Personnel Services – Salaries

90,612.20

**Total Personnel Services – Salaries**

**\$90,612.20**

200 Personnel Services – Employee Benefits

210 Group Insurance – Contracted Provider

198.48

220 Social Security Contributions

6,749.26

230 PSERS Retirement Contributions

26,910.47

250 Unemployment Compensation

50.93

260 Workers' Compensation

404.11

270 Group Insurance – Self-Insurance

17,072.71

**Total Personnel Services – Employee Benefits**

**\$51,385.96**

500 Other Purchased Services

530 Communications

475.95

**Total Other Purchased Services**

**\$475.95**

800 Other Objects

810 Dues and Fees

460.00

**Total Other Objects**

**\$460.00**

**Total 2619 Supervision of Operation and Maintenance of Plant Services – All Other Supervision**

**\$142,934.11**

**General Fund (10)**

	<u>Elementary</u>	<u>Secondary</u>	<u>Federal</u>	<u>Total</u>
<b>2620 Operation of Buildings Services</b>				
<b>100 Personnel Services – Salaries</b>				
100 Personnel Services – Salaries				2,035,816.69
<b>Total Personnel Services – Salaries</b>				<b>\$2,035,816.69</b>
<b>200 Personnel Services – Employee Benefits</b>				
210 Group Insurance – Contracted Provider				2,199.60
220 Social Security Contributions				148,515.41
230 PSERS Retirement Contributions				609,620.50
250 Unemployment Compensation				1,138.66
260 Workers' Compensation				9,034.54
270 Group Insurance – Self-Insurance				589,194.76
<b>Total Personnel Services – Employee Benefits</b>				<b>\$1,359,703.47</b>
<b>300 Purchased Professional and Technical Services</b>				
330 Other Professional Services				18,528.00
<b>Total Purchased Professional and Technical Services</b>				<b>\$18,528.00</b>
<b>400 Purchased Property Services</b>				
410 Cleaning Services				1,815,475.12
420 Utility Services				224,973.55
430 Repairs and Maintenance Services				575,314.55
440 Rentals				6,577.17
460 Extermination Services				3,276.00
<b>Total Purchased Property Services</b>				<b>\$2,625,616.39</b>
<b>500 Other Purchased Services</b>				
522 Automotive Liability Insurance				50,826.00
523 General Property and Liability Insurance				250,264.00
530 Communications				10,303.98
549 Other Advertising/Public Relations				1,131.74
550 Printing and Binding				1,298.41
<b>Total Other Purchased Services</b>				<b>\$313,824.13</b>
<b>600 Supplies</b>				
610 General Supplies	287,692.54	268,189.28		555,881.82
620 Energy				1,548,886.34
<b>Total Supplies</b>	<b>\$287,692.54</b>	<b>\$268,189.28</b>		<b>\$2,104,768.16</b>
<b>700 Property</b>				
752 Capital Equipment – Original and Additional				8,533.00
762 Capitalized Equipment - Replacement				14,238.00
<b>Total Property</b>				<b>\$22,771.00</b>
<b>800 Other Objects</b>				
810 Dues and Fees				860.63
<b>Total Other Objects</b>				<b>\$860.63</b>
<b>Total 2620 Operation of Buildings Services</b>	<b>\$287,692.54</b>	<b>\$268,189.28</b>		<b>\$8,481,888.47</b>

General Fund (10)

	<u>Elementary</u>	<u>Secondary</u>	<u>Federal</u>	<u>Total</u>
<b>2630 Care and Upkeep of Grounds Services</b>				
<b>100 Personnel Services – Salaries</b>				
100 Personnel Services – Salaries				266,786.54
<b>Total Personnel Services – Salaries</b>				<b>\$266,786.54</b>
<b>200 Personnel Services – Employee Benefits</b>				
210 Group Insurance – Contracted Provider				282.00
220 Social Security Contributions				19,872.05
230 PSERS Retirement Contributions				79,778.13
250 Unemployment Compensation				149.33
260 Workers' Compensation				1,184.79
270 Group Insurance – Self-Insurance				81,318.99
<b>Total Personnel Services – Employee Benefits</b>				<b>\$182,585.29</b>
<b>400 Purchased Property Services</b>				
410 Cleaning Services				82,797.66
430 Repairs and Maintenance Services				4,642.39
440 Rentals				500.00
450 Construction Services				8,898.75
<b>Total Purchased Property Services</b>				<b>\$96,838.80</b>
<b>500 Other Purchased Services</b>				
530 Communications				2,002.09
<b>Total Other Purchased Services</b>				<b>\$2,002.09</b>
<b>600 Supplies</b>				
610 General Supplies	44,174.59	27,077.24		71,251.83
<b>Total Supplies</b>	<b>\$44,174.59</b>	<b>\$27,077.24</b>		<b>\$71,251.83</b>
<b>800 Other Objects</b>				
810 Dues and Fees				80.00
<b>Total Other Objects</b>				<b>\$80.00</b>
<b>Total 2630 Care and Upkeep of Grounds Services</b>	<b>\$44,174.59</b>	<b>\$27,077.24</b>		<b>\$619,544.55</b>

**General Fund (10)**

	<u>Elementary</u>	<u>Secondary</u>	<u>Federal</u>	<u>Total</u>
<b>2640 Care and Upkeep of Equipment Services</b>				
<b>100 Personnel Services – Salaries</b>				
100 Personnel Services – Salaries				62,935.54
<b>Total Personnel Services – Salaries</b>				<b>\$62,935.54</b>
<b>200 Personnel Services – Employee Benefits</b>				
210 Group Insurance – Contracted Provider				56.40
220 Social Security Contributions				4,667.30
230 PSERS Retirement Contributions				18,831.92
250 Unemployment Compensation				35.24
260 Workers' Compensation				279.66
270 Group Insurance – Self-Insurance				18,203.64
<b>Total Personnel Services – Employee Benefits</b>				<b>\$42,074.16</b>
<b>300 Purchased Professional and Technical Services</b>				
330 Other Professional Services				838.50
<b>Total Purchased Professional and Technical Services</b>				<b>\$838.50</b>
<b>400 Purchased Property Services</b>				
430 Repairs and Maintenance Services				23,738.91
440 Rentals				2,391.02
<b>Total Purchased Property Services</b>				<b>\$26,129.93</b>
<b>500 Other Purchased Services</b>				
530 Communications				314.83
<b>Total Other Purchased Services</b>				<b>\$314.83</b>
<b>600 Supplies</b>				
610 General Supplies	7,657.28	10,860.85		18,518.13
620 Energy				4,207.24
650 Supplies & Fees – Technology Related				181.56
<b>Total Supplies</b>	<b>\$7,657.28</b>	<b>\$10,860.85</b>		<b>\$22,906.93</b>
<b>700 Property</b>				
752 Capital Equipment – Original and Additional				33,720.24
<b>Total Property</b>				<b>\$33,720.24</b>
<b>Total 2640 Care and Upkeep of Equipment Services</b>	<b>\$7,657.28</b>	<b>\$10,860.85</b>		<b>\$188,920.13</b>

**General Fund (10)**

	<u>Elementary</u>	<u>Secondary</u>	<u>Federal</u>	<u>Total</u>
<b>2650 Vehicle Operation and Maintenance Services (Other Than Student Transportation Vehicles)</b>				
<b>100 Personnel Services – Salaries</b>				
100 Personnel Services – Salaries				62,134.18
<b>Total Personnel Services – Salaries</b>				<b>\$62,134.18</b>
<b>200 Personnel Services – Employee Benefits</b>				
210 Group Insurance – Contracted Provider				56.40
220 Social Security Contributions				4,605.56
230 PSERS Retirement Contributions				18,591.33
250 Unemployment Compensation				34.79
260 Workers' Compensation				276.09
270 Group Insurance – Self-Insurance				19,671.31
<b>Total Personnel Services – Employee Benefits</b>				<b>\$43,235.48</b>
<b>400 Purchased Property Services</b>				
430 Repairs and Maintenance Services				32,201.92
<b>Total Purchased Property Services</b>				<b>\$32,201.92</b>
<b>500 Other Purchased Services</b>				
522 Automotive Liability Insurance				1,504.00
530 Communications				314.83
<b>Total Other Purchased Services</b>				<b>\$1,818.83</b>
<b>600 Supplies</b>				
610 General Supplies	6,265.72	6,192.23		12,457.95
620 Energy				23,379.42
<b>Total Supplies</b>	<b>\$6,265.72</b>	<b>\$6,192.23</b>		<b>\$35,837.37</b>
<b>Total 2650 Vehicle Operation and Maintenance Services (Other Than Student Transportation Vehicles)</b>	<b>\$6,265.72</b>	<b>\$6,192.23</b>		<b>\$175,227.78</b>

**General Fund (10)**

	<u>Elementary</u>	<u>Secondary</u>	<u>Federal</u>	<u>Total</u>
<b>2660 Safety and Security Services</b>				
<b>100 Personnel Services – Salaries</b>				
100 Personnel Services – Salaries				133,440.31
<b>Total Personnel Services – Salaries</b>				<b>\$133,440.31</b>
<b>200 Personnel Services – Employee Benefits</b>				
210 Group Insurance – Contracted Provider				159.80
220 Social Security Contributions				9,578.38
230 PSERS Retirement Contributions				39,621.73
250 Unemployment Compensation				74.16
260 Workers' Compensation				588.42
270 Group Insurance – Self-Insurance				36,458.44
<b>Total Personnel Services – Employee Benefits</b>				<b>\$86,480.93</b>
<b>300 Purchased Professional and Technical Services</b>				
350 Security / Safety Services				26,164.00
<b>Total Purchased Professional and Technical Services</b>				<b>\$26,164.00</b>
<b>400 Purchased Property Services</b>				
430 Repairs and Maintenance Services				322.50
<b>Total Purchased Property Services</b>				<b>\$322.50</b>
<b>500 Other Purchased Services</b>				
523 General Property and Liability Insurance				2,525.00
530 Communications				1,894.38
<b>Total Other Purchased Services</b>				<b>\$4,419.38</b>
<b>600 Supplies</b>				
610 General Supplies	1,108.66	2,449.41		3,558.07
<b>Total Supplies</b>	<b>\$1,108.66</b>	<b>\$2,449.41</b>		<b>\$3,558.07</b>
<b>700 Property</b>				
752 Capital Equipment – Original and Additional				11,818.56
<b>Total Property</b>				<b>\$11,818.56</b>
<b>Total 2660 Safety and Security Services</b>	<b>\$1,108.66</b>	<b>\$2,449.41</b>		<b>\$266,203.75</b>

General Fund (10)

	<u>Elementary</u>	<u>Secondary</u>	<u>Federal</u>	<u>Total</u>
<b>2690 Other Operation and Maintenance of Plant Services</b>				
<b>100 Personnel Services – Salaries</b>				
100 Personnel Services – Salaries				62,622.10
<b>Total Personnel Services – Salaries</b>				<b>\$62,622.10</b>
<b>200 Personnel Services – Employee Benefits</b>				
210 Group Insurance – Contracted Provider				56.40
220 Social Security Contributions				4,368.54
230 PSERS Retirement Contributions				18,737.79
250 Unemployment Compensation				35.06
260 Workers' Compensation				278.26
270 Group Insurance – Self-Insurance				18,203.55
<b>Total Personnel Services – Employee Benefits</b>				<b>\$41,679.60</b>
<b>500 Other Purchased Services</b>				
530 Communications				309.80
<b>Total Other Purchased Services</b>				<b>\$309.80</b>
<b>800 Other Objects</b>				
810 Dues and Fees				43.11
<b>Total Other Objects</b>				<b>\$43.11</b>
<b>Total 2690 Other Operation and Maintenance of Plant Services</b>				<b>\$104,654.61</b>

General Fund (10)

	<u>Elementary</u>	<u>Secondary</u>	<u>Federal</u>	<u>Total</u>
<b>2700 Student Transportation Services</b>				
<b>100 Personnel Services – Salaries</b>				
100 Personnel Services – Salaries				123,058.10
<b>Total Personnel Services – Salaries</b>				<b>\$123,058.10</b>
<b>200 Personnel Services – Employee Benefits</b>				
210 Group Insurance – Contracted Provider				234.60
220 Social Security Contributions				9,030.97
230 PSERS Retirement Contributions				36,653.91
250 Unemployment Compensation				69.16
260 Workers' Compensation				548.81
270 Group Insurance – Self-Insurance				35,739.02
<b>Total Personnel Services – Employee Benefits</b>				<b>\$82,276.47</b>
<b>300 Purchased Professional and Technical Services</b>				
330 Other Professional Services				5,112.99
<b>Total Purchased Professional and Technical Services</b>				<b>\$5,112.99</b>
<b>400 Purchased Property Services</b>				
430 Repairs and Maintenance Services				2,890.81
440 Rentals				3,600.00
<b>Total Purchased Property Services</b>				<b>\$6,490.81</b>
<b>500 Other Purchased Services</b>				
511 Student Transportation Services from Another LEA Within the State				10,792.72
513 Contracted Carriers			159,282.12	6,878,218.40
516 Student Transportation Services From the IU				264,760.77
530 Communications				522.95
<b>Total Other Purchased Services</b>			<b>\$159,282.12</b>	<b>\$7,154,294.84</b>
<b>600 Supplies</b>				
610 General Supplies				47.68
620 Energy				5,729.00
<b>Total Supplies</b>				<b>\$5,776.68</b>
<b>800 Other Objects</b>				
810 Dues and Fees				898.58
<b>Total Other Objects</b>				<b>\$898.58</b>
<b>Total 2700 Student Transportation Services</b>			<b>\$159,282.12</b>	<b>\$7,377,908.47</b>

**General Fund (10)**

**2710 Supervision of Student Transportation Services**

Elementary

Secondary

Federal

Total

**100 Personnel Services – Salaries**

100 Personnel Services – Salaries 123,058.10

**Total Personnel Services – Salaries \$123,058.10**

**200 Personnel Services – Employee Benefits**

210 Group Insurance – Contracted Provider 234.60

220 Social Security Contributions 9,030.97

230 PSERS Retirement Contributions 36,653.91

250 Unemployment Compensation 69.16

260 Workers' Compensation 548.81

270 Group Insurance – Self-Insurance 35,739.02

**Total Personnel Services – Employee Benefits \$82,276.47**

**500 Other Purchased Services**

530 Communications 317.11

**Total Other Purchased Services \$317.11**

**800 Other Objects**

810 Dues and Fees 215.00

**Total Other Objects \$215.00**

**Total 2710 Supervision of Student Transportation Services \$205,866.68**

**General Fund (10)**

2711 Supervision of Student Transportation Services – Head of Component	<u>Elementary</u>	<u>Secondary</u>	<u>Federal</u>	<u>Total</u>
<b>100 Personnel Services – Salaries</b>				
100 Personnel Services – Salaries				123,058.10
<b>Total Personnel Services – Salaries</b>				<b>\$123,058.10</b>
<b>200 Personnel Services – Employee Benefits</b>				
210 Group Insurance – Contracted Provider				234.60
220 Social Security Contributions				9,030.97
230 PSERS Retirement Contributions				36,653.91
250 Unemployment Compensation				69.16
260 Workers' Compensation				548.81
270 Group Insurance – Self-Insurance				35,739.02
<b>Total Personnel Services – Employee Benefits</b>				<b>\$82,276.47</b>
<b>500 Other Purchased Services</b>				
530 Communications				317.11
<b>Total Other Purchased Services</b>				<b>\$317.11</b>
<b>800 Other Objects</b>				
810 Dues and Fees				215.00
<b>Total Other Objects</b>				<b>\$215.00</b>
<b>Total 2711 Supervision of Student Transportation Services – Head of Component</b>				<b>\$205,866.68</b>

**General Fund (10)**

	<u>Elementary</u>	<u>Secondary</u>	<u>Federal</u>	<u>Total</u>
<b>2720 Vehicle Operation Services</b>				
<b>300 <u>Purchased Professional and Technical Services</u></b>				
330 Other Professional Services				5,112.99
<b>Total Purchased Professional and Technical Services</b>				<b>\$5,112.99</b>
<b>400 <u>Purchased Property Services</u></b>				
440 Rentals				3,600.00
<b>Total Purchased Property Services</b>				<b>\$3,600.00</b>
<b>500 <u>Other Purchased Services</u></b>				
511 Student Transportation Services from Another LEA Within the State				10,792.72
513 Contracted Carriers			159,282.12	4,668,133.61
516 Student Transportation Services From the IU				264,760.77
530 Communications				205.84
<b>Total Other Purchased Services</b>			<b>\$159,282.12</b>	<b>\$4,943,892.94</b>
<b>600 <u>Supplies</u></b>				
610 General Supplies				47.68
<b>Total Supplies</b>				<b>\$47.68</b>
<b>800 <u>Other Objects</u></b>				
810 Dues and Fees				683.58
<b>Total Other Objects</b>				<b>\$683.58</b>
<b>Total 2720 Vehicle Operation Services</b>			<b>\$159,282.12</b>	<b>\$4,953,337.19</b>

General Fund (10)

	<u>Elementary</u>	<u>Secondary</u>	<u>Federal</u>	<u>Total</u>
<b>2740 Vehicle Servicing and Maintenance Services</b>				
<b>400 <u>Purchased Property Services</u></b>				
430 Repairs and Maintenance Services				2,890.81
<b>Total Purchased Property Services</b>				<b>\$2,890.81</b>
<b>500 <u>Other Purchased Services</u></b>				
513 Contracted Carriers				360,942.75
<b>Total Other Purchased Services</b>				<b>\$360,942.75</b>
<b>600 <u>Supplies</u></b>				
620 Energy				5,729.00
<b>Total Supplies</b>				<b>\$5,729.00</b>
<b>Total 2740 Vehicle Servicing and Maintenance Services</b>				<b>\$369,562.56</b>

General Fund (10)

2750 Nonpublic Transportation

Elementary

Secondary

Federal

Total

500 Other Purchased Services

513 Contracted Carriers

1,833,991.43

**Total Other Purchased Services**

**\$1,833,991.43**

**Total 2750 Nonpublic Transportation**

**\$1,833,991.43**

General Fund (10)

2790 Other Student Transportation Services

Elementary

Secondary

Federal

Total

500 Other Purchased Services

513 Contracted Carriers

15,150.61

**Total Other Purchased Services**

**\$15,150.61**

**Total 2790 Other Student Transportation Services**

**\$15,150.61**

**General Fund (10)**

**2800 Support Services – Central**

Elementary                      Secondary                      Federal                      Total

<b>100</b>	<b><u>Personnel Services – Salaries</u></b>			
	100 Personnel Services – Salaries			1,186,185.92
<b>Total Personnel Services – Salaries</b>				<b>\$1,186,185.92</b>
<b>200</b>	<b><u>Personnel Services – Employee Benefits</u></b>			
	210 Group Insurance – Contracted Provider			2,236.53
	220 Social Security Contributions			88,683.42
	230 PSERS Retirement Contributions			349,413.73
	240 Tuition Reimbursement			49,872.00
	250 Unemployment Compensation			662.40
	260 Workers' Compensation			5,247.69
	270 Group Insurance – Self-Insurance			261,308.35
	299 All Other Employee Benefits			3,497.00
<b>Total Personnel Services – Employee Benefits</b>				<b>\$760,921.12</b>
<b>300</b>	<b><u>Purchased Professional and Technical Services</u></b>			
	324 Professional Educational Services – Employee Training and Development Services		660.00	15,740.55
	330 Other Professional Services			35,713.87
	340 Technical Services			170,872.58
<b>Total Purchased Professional and Technical Services</b>				<b>\$660.00      \$222,327.00</b>
<b>400</b>	<b><u>Purchased Property Services</u></b>			
	430 Repairs and Maintenance Services			84,286.17
	440 Rentals			976,230.73
<b>Total Purchased Property Services</b>				<b>\$1,060,516.90</b>
<b>500</b>	<b><u>Other Purchased Services</u></b>			
	530 Communications			147,227.98
	541 Advertising Related to Federal Grant Awards			275.00
	549 Other Advertising/Public Relations			1,182.19
	550 Printing and Binding			25.10
	580 Travel		473.78	10,014.77
<b>Total Other Purchased Services</b>				<b>\$473.78      \$158,725.04</b>
<b>600</b>	<b><u>Supplies</u></b>			
	610 General Supplies			3,340.98
	630 Food			187.50
	650 Supplies & Fees – Technology Related			542,236.83
<b>Total Supplies</b>				<b>\$545,765.31</b>
<b>700</b>	<b><u>Property</u></b>			
	758 Capitalized Technology Software - Original			56,515.00
	768 Capitalized Technology Software - Replacement			469.00
<b>Total Property</b>				<b>\$56,984.00</b>
<b>800</b>	<b><u>Other Objects</u></b>			
	810 Dues and Fees			4,303.54
<b>Total Other Objects</b>				<b>\$4,303.54</b>
<b>Total 2800 Support Services – Central</b>				<b>\$1,133.78      \$3,995,728.83</b>



General Fund (10)

2820 Information Services

Elementary

Secondary

Federal

Total

500 Other Purchased Services

530 Communications

1,124.17

**Total Other Purchased Services**

**\$1,124.17**

**Total 2820 Information Services**

**\$1,124.17**

General Fund (10)

2829 Other Information Services

Elementary

Secondary

Federal

Total

500 Other Purchased Services

530 Communications

1,124.17

**Total Other Purchased Services**

**\$1,124.17**

**Total 2829 Other Information Services**

**\$1,124.17**

**General Fund (10)**

**2830 Staff Services**

	<u>Elementary</u>	<u>Secondary</u>	<u>Federal</u>	<u>Total</u>
<b>100 Personnel Services – Salaries</b>				
100 Personnel Services – Salaries				255,623.57
<b>Total Personnel Services – Salaries</b>				<b>\$255,623.57</b>
<b>200 Personnel Services – Employee Benefits</b>				
210 Group Insurance – Contracted Provider				485.84
220 Social Security Contributions				19,098.42
230 PSERS Retirement Contributions				76,859.91
240 Tuition Reimbursement				49,872.00
250 Unemployment Compensation				141.99
260 Workers' Compensation				1,118.74
270 Group Insurance – Self-Insurance				26,587.37
<b>Total Personnel Services – Employee Benefits</b>				<b>\$174,164.27</b>
<b>300 Purchased Professional and Technical Services</b>				
324 Professional Educational Services – Employee Training and Development Services			660.00	15,740.55
330 Other Professional Services				35,713.87
340 Technical Services				14,979.08
<b>Total Purchased Professional and Technical Services</b>			<b>\$660.00</b>	<b>\$66,433.50</b>
<b>500 Other Purchased Services</b>				
530 Communications				1,203.30
541 Advertising Related to Federal Grant Awards				275.00
549 Other Advertising/Public Relations				1,182.19
550 Printing and Binding				12.55
580 Travel			473.78	7,917.36
<b>Total Other Purchased Services</b>			<b>\$473.78</b>	<b>\$10,590.40</b>
<b>600 Supplies</b>				
610 General Supplies				1,520.41
630 Food				187.50
<b>Total Supplies</b>				<b>\$1,707.91</b>
<b>800 Other Objects</b>				
810 Dues and Fees				435.00
<b>Total Other Objects</b>				<b>\$435.00</b>
<b>Total 2830 Staff Services</b>			<b>\$1,133.78</b>	<b>\$508,954.65</b>

**General Fund (10)**

	<u>Elementary</u>	<u>Secondary</u>	<u>Federal</u>	<u>Total</u>
<b>2831 Supervision of Staff Services</b>				
<b>100 Personnel Services – Salaries</b>				
100 Personnel Services – Salaries				255,623.57
<b>Total Personnel Services – Salaries</b>				<b>\$255,623.57</b>
<b>200 Personnel Services – Employee Benefits</b>				
210 Group Insurance – Contracted Provider				485.84
220 Social Security Contributions				18,223.30
230 PSERS Retirement Contributions				76,859.91
250 Unemployment Compensation				141.99
260 Workers' Compensation				1,118.74
270 Group Insurance – Self-Insurance				26,587.37
<b>Total Personnel Services – Employee Benefits</b>				<b>\$123,417.15</b>
<b>300 Purchased Professional and Technical Services</b>				
324 Professional Educational Services – Employee Training and Development Services				495.00
330 Other Professional Services				35,713.87
340 Technical Services				14,979.08
<b>Total Purchased Professional and Technical Services</b>				<b>\$51,187.95</b>
<b>500 Other Purchased Services</b>				
530 Communications				1,203.30
541 Advertising Related to Federal Grant Awards				275.00
549 Other Advertising/Public Relations				1,182.19
550 Printing and Binding				12.55
580 Travel				104.76
<b>Total Other Purchased Services</b>				<b>\$2,777.80</b>
<b>600 Supplies</b>				
610 General Supplies				1,520.41
<b>Total Supplies</b>				<b>\$1,520.41</b>
<b>800 Other Objects</b>				
810 Dues and Fees				435.00
<b>Total Other Objects</b>				<b>\$435.00</b>
<b>Total 2831 Supervision of Staff Services</b>				<b>\$434,961.88</b>

General Fund (10)

2834 Staff Development Services – Non-Instructional, Certified Staff Only

Elementary

Secondary

Federal

Total

200 Personnel Services – Employee Benefits

220 Social Security Contributions

875.12

240 Tuition Reimbursement

45,194.00

**Total Personnel Services – Employee Benefits**

**\$46,069.12**

300 Purchased Professional and Technical Services

324 Professional Educational Services – Employee Training and Development Services

330.00

6,354.00

**Total Purchased Professional and Technical Services**

**\$330.00**

**\$6,354.00**

500 Other Purchased Services

580 Travel

2,763.10

**Total Other Purchased Services**

**\$2,763.10**

600 Supplies

630 Food

187.50

**Total Supplies**

**\$187.50**

**Total 2834 Staff Development Services – Non-Instructional, Certified Staff Only**

**\$330.00**

**\$55,373.72**

General Fund (10)

	<u>Elementary</u>	<u>Secondary</u>	<u>Federal</u>	<u>Total</u>
<b>2836 Staff Development Services – Non-Instructional, Non-Certified Staff Only</b>				
<b>200 Personnel Services – Employee Benefits</b>				
240 Tuition Reimbursement				4,678.00
<b>Total Personnel Services – Employee Benefits</b>				<b>\$4,678.00</b>
<b>300 Purchased Professional and Technical Services</b>				
324 Professional Educational Services – Employee Training and Development Services			330.00	8,891.55
<b>Total Purchased Professional and Technical Services</b>			<b>\$330.00</b>	<b>\$8,891.55</b>
<b>500 Other Purchased Services</b>				
580 Travel			473.78	5,049.50
<b>Total Other Purchased Services</b>			<b>\$473.78</b>	<b>\$5,049.50</b>
<b>Total 2836 Staff Development Services – Non-Instructional, Non-Certified Staff Only</b>			<b>\$803.78</b>	<b>\$18,619.05</b>

General Fund (10)

2900 Other Support Services

Elementary

Secondary

Federal

Total

500 Other Purchased Services

595 IU Payments By Withholding

106,645.46

596 Direct Payments To Intermediate Units

8,495.00

**Total Other Purchased Services**

**\$115,140.46**

**Total 2900 Other Support Services**

**\$115,140.46**

General Fund (10)

2910 Support Services Not Listed Elsewhere In the 2000 Series

Elementary

Secondary

Federal

Total

500 Other Purchased Services

595 IU Payments By Withholding

106,645.46

596 Direct Payments To Intermediate Units

8,495.00

**Total Other Purchased Services**

**\$115,140.46**

**Total 2910 Support Services Not Listed Elsewhere In the 2000 Series**

**\$115,140.46**

**General Fund (10)**

**3000 Operation of Non-Instructional Services**

**Total**

**100 Personnel Services – Salaries**

100 Personnel Services – Salaries 1,245,027.39

**Total Personnel Services – Salaries \$1,245,027.39**

**200 Personnel Services – Employee Benefits**

210 Group Insurance – Contracted Provider 447.84

220 Social Security Contributions 93,550.95

230 PSERS Retirement Contributions 337,791.83

250 Unemployment Compensation 697.24

260 Workers’ Compensation 5,537.92

270 Group Insurance – Self-Insurance 84,786.04

**Total Personnel Services – Employee Benefits \$522,811.82**

**300 Purchased Professional and Technical Services**

324 Professional Educational Services – Employee Training and Development Services 75.00

329 Professional Educational Services – Other 48,525.00

330 Other Professional Services 6,325.00

350 Security / Safety Services 30,913.00

**Total Purchased Professional and Technical Services \$85,838.00**

**400 Purchased Property Services**

410 Cleaning Services 1,071.00

420 Utility Services 1,515.00

430 Repairs and Maintenance Services 48,881.11

440 Rentals 18,047.15

**Total Purchased Property Services \$69,514.26**

**500 Other Purchased Services**

510 Student Transportation Services 136,885.12

520 Insurance – General 16,411.00

530 Communications 3,187.71

550 Printing and Binding 1,151.67

580 Travel 30,684.96

**Total Other Purchased Services \$188,320.46**

**600 Supplies**

610 General Supplies 135,699.89

620 Energy 69.90

630 Food 1,483.75

650 Supplies & Fees – Technology Related 5,810.00

**Total Supplies \$143,063.54**

**700 Property**

752 Capital Equipment – Original and Additional 6,128.00

**Total Property \$6,128.00**

**800 Other Objects**

810 Dues and Fees 9,776.86

LEA : 123467303 Spring-Ford Area SD

Printed 7/18/2018 8:50:11 AM

General Fund (10)

3000 Operation of Non-Instructional Services

Total

800 Other Objects

890 Miscellaneous Expenditures

19,978.92

**Total Other Objects**

**\$29,755.78**

**Total 3000 Operation of Non-Instructional Services**

**\$2,290,459.25**

**General Fund (10)**

**3200 Student Activities**

Elementary                      Secondary                      Federal                      Total

<b>100</b>	<b><u>Personnel Services – Salaries</u></b>				
	100 Personnel Services – Salaries				1,202,842.39
<b>Total Personnel Services – Salaries</b>					<b>\$1,202,842.39</b>
<b>200</b>	<b><u>Personnel Services – Employee Benefits</u></b>				
	210 Group Insurance – Contracted Provider				447.84
	220 Social Security Contributions				90,370.84
	230 PSERS Retirement Contributions				325,119.68
	250 Unemployment Compensation				673.57
	260 Workers' Compensation				5,349.81
	270 Group Insurance – Self-Insurance				84,786.04
<b>Total Personnel Services – Employee Benefits</b>					<b>\$506,747.78</b>
<b>300</b>	<b><u>Purchased Professional and Technical Services</u></b>				
	324 Professional Educational Services – Employee Training and Development Services				75.00
	329 Professional Educational Services – Other				48,525.00
	330 Other Professional Services				6,325.00
	350 Security / Safety Services				30,913.00
<b>Total Purchased Professional and Technical Services</b>					<b>\$85,838.00</b>
<b>400</b>	<b><u>Purchased Property Services</u></b>				
	410 Cleaning Services				1,071.00
	420 Utility Services				1,515.00
	430 Repairs and Maintenance Services				48,881.11
	440 Rentals				18,047.15
<b>Total Purchased Property Services</b>					<b>\$69,514.26</b>
<b>500</b>	<b><u>Other Purchased Services</u></b>				
	510 Student Transportation Services				136,885.12
	520 Insurance – General				16,411.00
	530 Communications				3,187.71
	550 Printing and Binding				932.67
	580 Travel				9,279.12
<b>Total Other Purchased Services</b>					<b>\$166,695.62</b>
<b>600</b>	<b><u>Supplies</u></b>				
	610 General Supplies				126,334.71
	620 Energy				69.90
	630 Food				1,483.75
	650 Supplies & Fees – Technology Related				5,690.00
<b>Total Supplies</b>					<b>\$133,578.36</b>
<b>800</b>	<b><u>Other Objects</u></b>				
	810 Dues and Fees				9,776.86
	890 Miscellaneous Expenditures				16,688.92
<b>Total Other Objects</b>					<b>\$26,465.78</b>
<b>Total 3200 Student Activities</b>					<b>\$2,191,682.19</b>

**General Fund (10)**

	<u>Elementary</u>	<u>Secondary</u>	<u>Federal</u>	<u>Total</u>
<b>3300 Community Services</b>				
<b>100 Personnel Services – Salaries</b>				
100 Personnel Services – Salaries				42,185.00
<b>Total Personnel Services – Salaries</b>				<b>\$42,185.00</b>
<b>200 Personnel Services – Employee Benefits</b>				
220 Social Security Contributions				3,180.11
230 PSERS Retirement Contributions				12,672.15
250 Unemployment Compensation				23.67
260 Workers' Compensation				188.11
<b>Total Personnel Services – Employee Benefits</b>				<b>\$16,064.04</b>
<b>500 Other Purchased Services</b>				
550 Printing and Binding			219.00	219.00
580 Travel				21,405.84
<b>Total Other Purchased Services</b>			<b>\$219.00</b>	<b>\$21,624.84</b>
<b>600 Supplies</b>				
610 General Supplies			687.00	9,365.18
650 Supplies & Fees – Technology Related			120.00	120.00
<b>Total Supplies</b>			<b>\$807.00</b>	<b>\$9,485.18</b>
<b>700 Property</b>				
752 Capital Equipment – Original and Additional				6,128.00
<b>Total Property</b>				<b>\$6,128.00</b>
<b>800 Other Objects</b>				
890 Miscellaneous Expenditures				3,290.00
<b>Total Other Objects</b>				<b>\$3,290.00</b>
<b>Total 3300 Community Services</b>			<b>\$1,026.00</b>	<b>\$98,777.06</b>

**General Fund (10)**

**4000 Facilities Acquisition, Construction and Improvement Services**

**Total**

**300 Purchased Professional and Technical Services**

330 Other Professional Services 184,409.62

**Total Purchased Professional and Technical Services \$184,409.62**

**400 Purchased Property Services**

450 Construction Services 20,928.21

**Total Purchased Property Services \$20,928.21**

**600 Supplies**

610 General Supplies 4,615.08

**Total Supplies \$4,615.08**

**700 Property**

710 Land and Improvements 17,498.24

780 Infrastructure Assets 5,544.17

790 Other Property 12,418.21

**Total Property \$35,460.62**

**Total 4000 Facilities Acquisition, Construction and Improvement Services \$245,413.53**

LEA : 123467303 Spring-Ford Area SD

Printed 7/18/2018 8:50:12 AM

General Fund (10)

4200 Existing Site Improvement Services

Elementary

Secondary

Federal

Total

700 Property

710 Land and Improvements

17,498.24

**Total Property**

**\$17,498.24**

**Total 4200 Existing Site Improvement Services**

**\$17,498.24**

General Fund (10)

4300 Architecture and Engineering Services / Educational Specifications Development – Original and Additional

Elementary

Secondary

Federal

Total

300 Purchased Professional and Technical Services

330 Other Professional Services

184,409.62

**Total Purchased Professional and Technical Services**

**\$184,409.62**

**Total 4300 Architecture and Engineering Services / Educational Specifications Development – Original and Additional**

**\$184,409.62**

General Fund (10)

	<u>Elementary</u>	<u>Secondary</u>	<u>Federal</u>	<u>Total</u>
<b>4600 Existing Building Improvement Services</b>				
<b>400 <u>Purchased Property Services</u></b>				
450 Construction Services				20,928.21
<b>Total Purchased Property Services</b>				<b>\$20,928.21</b>
<b>600 <u>Supplies</u></b>				
610 General Supplies				4,615.08
<b>Total Supplies</b>				<b>\$4,615.08</b>
<b>700 <u>Property</u></b>				
780 Infrastructure Assets				5,544.17
790 Other Property				12,418.21
<b>Total Property</b>				<b>\$17,962.38</b>
<b>Total 4600 Existing Building Improvement Services</b>				<b>\$43,505.67</b>

**General Fund (10)**

**5000 Other Expenditures and Financing Uses**

**Total**

**800 Other Objects**

830 Interest	3,653,839.75
880 Refunds of Prior Years' Receipts	3,356.98

<b>Total Other Objects</b>	<b>\$3,657,196.73</b>
----------------------------	-----------------------

**900 Other Uses of Funds**

910 Redemption of Principal	9,535,000.00
930 Fund Transfers	1,306,975.48
932 Capital Reserve Fund Transfers Applicable To Fund 32	1,513,953.00

<b>Total Other Uses of Funds</b>	<b>\$12,355,928.48</b>
----------------------------------	------------------------

<b>Total 5000 Other Expenditures and Financing Uses</b>	<b>\$16,013,125.21</b>
---	------------------------

General Fund (10)

	<u>Elementary</u>	<u>Secondary</u>	<u>Federal</u>	<u>Total</u>
<b>5100 Debt Service / Other Expenditures and Financing Uses</b>				
<b>800 Other Objects</b>				
830 Interest				3,653,839.75
880 Refunds of Prior Years' Receipts				3,356.98
<b>Total Other Objects</b>				<b>\$3,657,196.73</b>
<b>900 Other Uses of Funds</b>				
910 Redemption of Principal				9,535,000.00
<b>Total Other Uses of Funds</b>				<b>\$9,535,000.00</b>
<b>Total 5100 Debt Service / Other Expenditures and Financing Uses</b>				<b>\$13,192,196.73</b>

General Fund (10)

	<u>Elementary</u>	<u>Secondary</u>	<u>Federal</u>	<u>Total</u>
<b>5110 Debt Service</b>				
<b>800 Other Objects</b>				
830 Interest				3,653,839.75
<b>Total Other Objects</b>				<b>\$3,653,839.75</b>
<b>900 Other Uses of Funds</b>				
910 Redemption of Principal				9,535,000.00
<b>Total Other Uses of Funds</b>				<b>\$9,535,000.00</b>
<b>Total 5110 Debt Service</b>				<b>\$13,188,839.75</b>

General Fund (10)

	<u>Elementary</u>	<u>Secondary</u>	<u>Federal</u>	<u>Total</u>
5130 Refund of Prior Year Revenues / Receipts				
800 <u>Other Objects</u>				
880 Refunds of Prior Years' Receipts				3,356.98
<b>Total Other Objects</b>				<b>\$3,356.98</b>
<b>Total 5130 Refund of Prior Year Revenues / Receipts</b>				<b>\$3,356.98</b>

General Fund (10)

	<u>Elementary</u>	<u>Secondary</u>	<u>Federal</u>	<u>Total</u>
<b>5200 Interfund Transfers – Out</b>				
<b>900 Other Uses of Funds</b>				
930 Fund Transfers				1,306,975.48
932 Capital Reserve Fund Transfers Applicable To Fund 32				1,513,953.00
<b>Total Other Uses of Funds</b>				<b>\$2,820,928.48</b>
<b>Total 5200 Interfund Transfers – Out</b>				<b>\$2,820,928.48</b>

General Fund (10)

5230 Capital Projects Fund Transfers

Elementary

Secondary

Federal

Total

900 Other Uses of Funds

932 Capital Reserve Fund Transfers Applicable To Fund 32

1,513,953.00

**Total Other Uses of Funds**

**\$1,513,953.00**

**Total 5230 Capital Projects Fund Transfers**

**\$1,513,953.00**

General Fund (10)

5240 Debt Service Fund Transfers

Elementary

Secondary

Federal

Total

900 Other Uses of Funds

930 Fund Transfers

1,300,000.00

**Total Other Uses of Funds**

**\$1,300,000.00**

**Total 5240 Debt Service Fund Transfers**

**\$1,300,000.00**

General Fund (10)

5250 Enterprise Fund Transfers

Elementary

Secondary

Federal

Total

900 Other Uses of Funds

930 Fund Transfers

6,975.48

**Total Other Uses of Funds**

**\$6,975.48**

**Total 5250 Enterprise Fund Transfers**

**\$6,975.48**

Capital Reserve Fund - § 1431 (32)

2000 Support Services

300 Purchased Professional and Technical Services

340 Technical Services	41,956.41
350 Security / Safety Services	3,898.60

<b>Total Purchased Professional and Technical Services</b>	<b>\$45,855.01</b>
--	--------------------

400 Purchased Property Services

440 Rentals	6,747.74
-------------	----------

<b>Total Purchased Property Services</b>	<b>\$6,747.74</b>
--	-------------------

600 Supplies

610 General Supplies	3,232.32
650 Supplies & Fees – Technology Related	86,302.16

<b>Total Supplies</b>	<b>\$89,534.48</b>
-----------------------	--------------------

700 Property

752 Capital Equipment – Original and Additional	26,936.00
756 Capitalized Technology Hardware and Equipment – Original	701,837.62
762 Capitalized Equipment - Replacement	175,397.73
766 Capitalized Technology Hardware and Equipment – Replacement	199,376.80

<b>Total Property</b>	<b>\$1,103,548.15</b>
-----------------------	-----------------------

<b>Total 2000 Support Services</b>	<b>\$1,245,685.38</b>
------------------------------------	-----------------------

Capital Reserve Fund - § 1431 (32)

	<u>Elementary</u>	<u>Secondary</u>	<u>Federal</u>	<u>Total</u>
<b>2600 Operation and Maintenance of Plant Services</b>				
<b>300 <u>Purchased Professional and Technical Services</u></b>				
350 Security / Safety Services				3,898.60
<b>Total Purchased Professional and Technical Services</b>				<b>\$3,898.60</b>
<b>400 <u>Purchased Property Services</u></b>				
440 Rentals				990.00
<b>Total Purchased Property Services</b>				<b>\$990.00</b>
<b>600 <u>Supplies</u></b>				
610 General Supplies	3,232.32			3,232.32
<b>Total Supplies</b>	<b>\$3,232.32</b>			<b>\$3,232.32</b>
<b>700 <u>Property</u></b>				
752 Capital Equipment – Original and Additional				26,936.00
762 Capitalized Equipment - Replacement				175,397.73
<b>Total Property</b>				<b>\$202,333.73</b>
<b>Total 2600 Operation and Maintenance of Plant Services</b>	<b>\$3,232.32</b>			<b>\$210,454.65</b>

Capital Reserve Fund - § 1431 (32)

2620 Operation of Buildings Services

400 Purchased Property Services

440 Rentals 990.00

Total Purchased Property Services \$990.00

600 Supplies

610 General Supplies 3,232.32 3,232.32

Total Supplies \$3,232.32 \$3,232.32

700 Property

762 Capitalized Equipment - Replacement 162,467.85

Total Property \$162,467.85

Total 2620 Operation of Buildings Services \$3,232.32 \$166,690.17

LEA : 123467303 Spring-Ford Area SD

Printed 7/18/2018 8:50:10 AM

Capital Reserve Fund - § 1431 (32)

2650 Vehicle Operation and Maintenance Services (Other Than Student Transportation Vehicles)

Elementary

Secondary

Federal

Total

700 Property

752 Capital Equipment – Original and Additional

26,936.00

762 Capitalized Equipment - Replacement

10,914.88

**Total Property**

**\$37,850.88**

**Total 2650 Vehicle Operation and Maintenance Services (Other Than Student Transportation Vehicles)**

**\$37,850.88**

LEA : 123467303 Spring-Ford Area SD

Printed 7/18/2018 8:50:10 AM

Capital Reserve Fund - § 1431 (32)

2660 Safety and Security Services

Elementary

Secondary

Federal

Total

300 Purchased Professional and Technical Services

350 Security / Safety Services

3,898.60

**Total Purchased Professional and Technical Services**

**\$3,898.60**

**Total 2660 Safety and Security Services**

**\$3,898.60**

LEA : 123467303 Spring-Ford Area SD

Printed 7/18/2018 8:50:10 AM

Capital Reserve Fund - § 1431 (32)

2690 Other Operation and Maintenance of Plant Services

Elementary

Secondary

Federal

Total

700 Property

762 Capitalized Equipment - Replacement

2,015.00

<b>Total Property</b>				<b>\$2,015.00</b>
<b>Total 2690 Other Operation and Maintenance of Plant Services</b>				<b>\$2,015.00</b>

Capital Reserve Fund - § 1431 (32)

2800 Support Services – Central

Elementary

Secondary

Federal

Total

300 Purchased Professional and Technical Services

340 Technical Services

41,956.41

**Total Purchased Professional and Technical Services**

**\$41,956.41**

400 Purchased Property Services

440 Rentals

5,757.74

**Total Purchased Property Services**

**\$5,757.74**

600 Supplies

650 Supplies & Fees – Technology Related

86,302.16

**Total Supplies**

**\$86,302.16**

700 Property

756 Capitalized Technology Hardware and Equipment – Original

701,837.62

766 Capitalized Technology Hardware and Equipment – Replacement

199,376.80

**Total Property**

**\$901,214.42**

**Total 2800 Support Services – Central**

**\$1,035,230.73**

Capital Reserve Fund - § 1431 (32)

2810 Planning, Research, Development and Evaluation Services

Elementary

Secondary

Federal

Total

300 Purchased Professional and Technical Services

340 Technical Services

41,956.41

**Total Purchased Professional and Technical Services**

**\$41,956.41**

400 Purchased Property Services

440 Rentals

5,757.74

**Total Purchased Property Services**

**\$5,757.74**

600 Supplies

650 Supplies & Fees – Technology Related

86,302.16

**Total Supplies**

**\$86,302.16**

700 Property

756 Capitalized Technology Hardware and Equipment – Original

701,837.62

766 Capitalized Technology Hardware and Equipment – Replacement

199,376.80

**Total Property**

**\$901,214.42**

**Total 2810 Planning, Research, Development and Evaluation Services**

**\$1,035,230.73**

Capital Reserve Fund - § 1431 (32)

4000 Facilities Acquisition, Construction and Improvement Services

Total

300 Purchased Professional and Technical Services

330 Other Professional Services 41,912.88

**Total Purchased Professional and Technical Services \$41,912.88**

400 Purchased Property Services

430 Repairs and Maintenance Services 157,110.50

450 Construction Services 809,669.39

**Total Purchased Property Services \$966,779.89**

700 Property

762 Capitalized Equipment - Replacement 27,366.00

780 Infrastructure Assets 126,180.44

**Total Property \$153,546.44**

**Total 4000 Facilities Acquisition, Construction and Improvement Services \$1,162,239.21**

Capital Reserve Fund - § 1431 (32)

4200 Existing Site Improvement Services

Elementary

Secondary

Federal

Total

300 Purchased Professional and Technical Services

330 Other Professional Services

7,069.34

**Total Purchased Professional and Technical Services**

**\$7,069.34**

400 Purchased Property Services

430 Repairs and Maintenance Services

157,110.50

450 Construction Services

212,995.00

**Total Purchased Property Services**

**\$370,105.50**

**Total 4200 Existing Site Improvement Services**

**\$377,174.84**

Capital Reserve Fund - § 1431 (32)

4400 Architecture and Engineering Services / Educational Specifications – Improvements

Elementary

Secondary

Federal

Total

300 Purchased Professional and Technical Services

330 Other Professional Services

20,048.87

**Total Purchased Professional and Technical Services**

**\$20,048.87**

**Total 4400 Architecture and Engineering Services / Educational Specifications – Improvements**

**\$20,048.87**

Capital Reserve Fund - § 1431 (32)

	<u>Elementary</u>	<u>Secondary</u>	<u>Federal</u>	<u>Total</u>
<b>4600 Existing Building Improvement Services</b>				
<b>300 <u>Purchased Professional and Technical Services</u></b>				
330 Other Professional Services				14,794.67
<b>Total Purchased Professional and Technical Services</b>				<b>\$14,794.67</b>
<b>400 <u>Purchased Property Services</u></b>				
450 Construction Services				596,674.39
<b>Total Purchased Property Services</b>				<b>\$596,674.39</b>
<b>700 <u>Property</u></b>				
762 Capitalized Equipment - Replacement				27,366.00
780 Infrastructure Assets				126,180.44
<b>Total Property</b>				<b>\$153,546.44</b>
<b>Total 4600 Existing Building Improvement Services</b>				<b>\$765,015.50</b>

**Other Capital Projects Fund (39)**

**5000 Other Expenditures and Financing Uses**

**Total**

**900 Other Uses of Funds**

910 Redemption of Principal

30,105,000.00

**Total Other Uses of Funds**

**\$30,105,000.00**

**Total 5000 Other Expenditures and Financing Uses**

**\$30,105,000.00**

Other Capital Projects Fund (39)

5100 Debt Service / Other Expenditures and Financing Uses

Elementary

Secondary

Federal

Total

900 Other Uses of Funds

910 Redemption of Principal

30,105,000.00

**Total Other Uses of Funds**

**\$30,105,000.00**

**Total 5100 Debt Service / Other Expenditures and Financing Uses**

**\$30,105,000.00**

LEA : 123467303 Spring-Ford Area SD

Printed 7/18/2018 8:50:15 AM

Other Capital Projects Fund (39)

5120 Debt Service – Refunded Bonds

Elementary

Secondary

Federal

Total

900 Other Uses of Funds

910 Redemption of Principal

30,105,000.00

**Total Other Uses of Funds**

**\$30,105,000.00**

**Total 5120 Debt Service – Refunded Bonds**

**\$30,105,000.00**

	<u>General Fund(10)</u>	<u>Public Purpose Trust(27)</u>	<u>Other Compt Approved (28)</u>	<u>Athletic / Activity(29)</u>	<u>Capital Reserve (690. 1850)(31)</u>
<b>1000 Instruction</b>					
1100 Regular Programs - Elementary / Secondary	54,742,086.43				
1200 Special Programs - Elementary / Secondary	27,063,496.15				
1300 Vocational Education	1,987,509.52				
1400 Other Instructional Programs - Elementary / Secondary	42,353.76				
<b>Total Instruction</b>	<b>\$83,835,445.86</b>				
<b>2000 Support Services</b>					
2100 Support Services - Students	5,300,905.09				
2200 Support Services - Instructional Staff	5,194,157.53				
2300 Support Services - Administration	7,206,113.84				
2400 Support Services - Pupil Health	2,449,883.92				
2500 Support Services - Business	1,069,158.38				
2600 Operation and Maintenance of Plant Services	10,229,049.76				
2700 Student Transportation Services	7,377,908.47				
2800 Support Services - Central	3,995,728.83				
2900 Other Support Services	115,140.46				
<b>Total Support Services</b>	<b>\$42,938,046.28</b>				
<b>3000 Operation of Non-Instructional Services</b>					
3200 Student Activities	2,191,682.19				
3300 Community Services	98,777.06				
<b>Total Operation of Non-Instructional Services</b>	<b>\$2,290,459.25</b>				
<b>4000 Facilities Acquisition, Construction and Improvement Services</b>					
4200 Existing Site Improvement Services	17,498.24				
4300 Architecture and Engineering Services / Educational Specifications Development - Original and Additional	184,409.62				
4400 Architecture and Engineering Services / Educational Specifications - Improvements					
4600 Existing Building Improvement Services	43,505.67				
<b>Total Facilities Acquisition, Construction and Improvement Services</b>	<b>\$245,413.53</b>				
<b>5000 Other Expenditures and Financing Uses</b>					
5100 Debt Service / Other Expenditures and Financing Uses	13,192,196.73				
5200 Interfund Transfers - Out	2,820,928.48				
<b>Total Other Expenditures and Financing Uses</b>	<b>\$16,013,125.21</b>				
<b>TOTAL ACTUAL EXPENDITURES &amp; OTHER FINANCING USES</b>	<b>\$145,322,490.13</b>				

	<u>Capital Reserve (1431)(32)</u>	<u>Other Capital Projects Fund(39)</u>	<u>Debt Service(40)</u>	<u>Permanent(90)</u>	<u>Total</u>
<b>1000 Instruction</b>					
1100 Regular Programs - Elementary / Secondary					54,742,086.43
1200 Special Programs - Elementary / Secondary					27,063,496.15
1300 Vocational Education					1,987,509.52
1400 Other Instructional Programs - Elementary / Secondary					42,353.76
<b>Total Instruction</b>					<b>\$83,835,445.86</b>
<b>2000 Support Services</b>					
2100 Support Services - Students					5,300,905.09
2200 Support Services - Instructional Staff					5,194,157.53
2300 Support Services - Administration					7,206,113.84
2400 Support Services - Pupil Health					2,449,883.92
2500 Support Services - Business					1,069,158.38
2600 Operation and Maintenance of Plant Services	210,454.65				10,439,504.41
2700 Student Transportation Services					7,377,908.47
2800 Support Services - Central	1,035,230.73				5,030,959.56
2900 Other Support Services					115,140.46
<b>Total Support Services</b>	<b>\$1,245,685.38</b>				<b>\$44,183,731.66</b>
<b>3000 Operation of Non-Instructional Services</b>					
3200 Student Activities					2,191,682.19
3300 Community Services					98,777.06
<b>Total Operation of Non-Instructional Services</b>					<b>\$2,290,459.25</b>
<b>4000 Facilities Acquisition, Construction and Improvement Services</b>					
4200 Existing Site Improvement Services	377,174.84				394,673.08
4300 Architecture and Engineering Services / Educational Specifications Development - Original and Additional					184,409.62
4400 Architecture and Engineering Services / Educational Specifications - Improvements	20,048.87				20,048.87
4600 Existing Building Improvement Services	765,015.50				808,521.17
<b>Total Facilities Acquisition, Construction and Improvement Services</b>	<b>\$1,162,239.21</b>				<b>\$1,407,652.74</b>
<b>5000 Other Expenditures and Financing Uses</b>					
5100 Debt Service / Other Expenditures and Financing Uses		30,105,000.00			43,297,196.73
5200 Interfund Transfers - Out					2,820,928.48
<b>Total Other Expenditures and Financing Uses</b>		<b>\$30,105,000.00</b>			<b>\$46,118,125.21</b>
<b>TOTAL ACTUAL EXPENDITURES &amp; OTHER FINANCING USES</b>	<b>\$2,407,924.59</b>	<b>\$30,105,000.00</b>			<b>\$177,835,414.72</b>

**PSERS Salary Data (Salary Data should relate to the General Fund only)**

<b>Amount Description</b>	<b>Amount</b>
Total Salary Base for salaries subject to PSERS withholding	61,311,509.83
Total Federally Funded salaries subject to PSERS withholding	555,547.81
	<hr/>

**Title I Expenditure Data**

<b>Amount Description</b>	<b>Amount</b>
Expenditures Funded with Current Title I Funds	490,639.00
Expenditures Funded with Carry over Title I Funds	
<b>Total Title I Expenditure Data</b>	<hr/> <b>\$490,639.00</b> <hr/>

**Title I ARRA Amount**

<b>Amount Description</b>	<b>Amount</b>
Portion of Total Title I Expenditures funded with ARRA Title I	<hr/>

**Benefits for Staff Relative to Collective Bargaining Agreements**

	OBJECT	COVERED	NOT COVERED	TOTAL
<b>10 General Fund</b>				
	211 Medical Insurance			
	212 Dental Insurance			
	215 Eye Care Insurance			
	216 Prescription Insurance			
	271 Self-Insurance Medical Benefits	6,455,750.20	2,303,853.40	8,759,603.60
	272 Self-Insurance Dental Benefits	455,903.53	200,511.59	656,415.12
	275 Self-Insurance Eye Care Benefits	129,524.28	68,990.59	198,514.87
	276 Self-Insurance Prescription Benefits	2,227,303.94	519,218.72	2,746,522.66
	<b>FUND TOTAL</b>	<b>\$9,268,481.95</b>	<b>\$3,092,574.30</b>	<b>\$12,361,056.25</b>
<b>50 Enterprise Fund</b>				
	211 Medical Insurance			
	212 Dental Insurance			
	215 Eye Care Insurance			
	216 Prescription Insurance			
	271 Self-Insurance Medical Benefits	206,641.60		206,641.60
	272 Self-Insurance Dental Benefits	12,671.45		12,671.45
	275 Self-Insurance Eye Care Benefits	3,063.61		3,063.61
	276 Self-Insurance Prescription Benefits	44,901.57		44,901.57
	<b>FUND TOTAL</b>	<b>\$267,278.23</b>		<b>\$267,278.23</b>
<b>60 Internal Service Fund</b>	<b>No Self Insurance data to report</b>			
	211 Medical Insurance			
	212 Dental Insurance			
	215 Eye Care Insurance			
	216 Prescription Insurance			
	271 Self-Insurance Medical Benefits			
	272 Self-Insurance Dental Benefits			
	275 Self-Insurance Eye Care Benefits			
	276 Self-Insurance Prescription Benefits			
	<b>FUND TOTAL</b>			
<b>Total of All Funds</b>		<b>\$9,535,760.18</b>	<b>\$3,092,574.30</b>	<b>\$12,628,334.48</b>

LEA : 123467303 Spring-Ford Area SD

Printed 7/18/2018 8:50:24 AM

Function	Special Education (Prior Year)	Nonspecial Education (Prior Year)	Total (Prior Year)	Special Education (Current Year)	Nonspecial Education (Current Year)	Total (Current Year)
2120 Guidance Services		3,164,405.57	3,164,405.57	265,307.76	3,392,800.92	3,658,108.68
2140 Psychological Services	1,155,566.55		1,155,566.55	1,278,147.26	135,876.92	1,414,024.18
2150 Speech Pathology and Audiology Services				2,734.36		2,734.36
2160 Social Work Services	19,559.75	120,152.72	139,712.47		150,297.11	150,297.11
2260 Instruction and Curriculum Development Services	881,742.16	894,061.77	1,775,803.93	987,063.64	859,198.50	1,846,262.14
2350 Legal and Accounting Services	159,372.26	150,175.90	309,548.16	23,683.93	196,187.77	219,871.70
2420 Medical Services	401,976.06	3,230.00	405,206.06	473,608.20	7,123.87	480,732.07
2440 Nursing Services	44,946.50	1,218,393.65	1,263,340.15	303,635.42	1,230,925.82	1,534,561.24
2700 Student Transportation Services	1,561,232.31	5,258,244.45	6,819,476.76	1,998,463.06	5,220,163.29	7,218,626.35
<b>Total</b>	<b>\$4,224,395.59</b>	<b>\$10,808,664.06</b>	<b>\$15,033,059.65</b>	<b>\$5,332,643.63</b>	<b>\$11,192,574.20</b>	<b>\$16,525,217.83</b>

(PRINCIPAL AMOUNTS ONLY)

**GOVERNMENTAL FUNDS/ ACTIVITIES**

	Short-Term Borrowing	General Obligation Bonds/Notes	Authority Building Obligations	Other Long-Term Debt	Other Post-Employment Benefits (OPEB)	Compensated Absences	Net Pension Liability	Total
1. Debt at Beginning of Fiscal Year		101,780,000.00		13,108,857.07	3,403,697.00	2,069,363.00	194,580,000.00	314,941,917.07
2. Additional Debt Incurred During Year		26,930,000.00			550,043.00	114,871.00	8,916,000.00	36,510,914.00
3. Retirements and Repayments		39,640,000.00		709,008.07				40,349,008.07
4. Debt at End of Fiscal Year		89,070,000.00		12,399,849.00	3,953,740.00	2,184,234.00	203,496,000.00	311,103,823.00
5. Accreted Interest at End Of Fiscal Year								
6. Total Debt and Accreted Interest		89,070,000.00		12,399,849.00	3,953,740.00	2,184,234.00	203,496,000.00	311,103,823.00
7. Current Portion P&I - Due within 1 year		13,188,839.25		929,783.00				14,118,622.25
8. Interest Paid during current fiscal year		3,653,839.25		425,979.52				4,079,818.77

(PRINCIPAL AMOUNTS ONLY)

**PROPRIETARY FUNDS**

	Short-Term Borrowing	General Obligation Bonds/Notes	Authority Building Obligations	Other Long-Term Debt	Other Post-Employment Benefits (OPEB)	Compensated Absences	Net Pension Liability	Total
1. Debt at Beginning of Fiscal Year							3,587,000.00	3,587,000.00
2. Additional Debt Incurred During Year							164,000.00	164,000.00
3. Retirements and Repayments								
4. Debt at End of Fiscal Year							3,751,000.00	3,751,000.00
5. Accreted Interest at End Of Fiscal Year								
6. Total Debt and Accreted Interest							3,751,000.00	3,751,000.00
7. Current Portion P&I - Due within 1 year								
8. Interest Paid during current fiscal year								

**Total Principal and Interest Payments Made by Your School - All Funds**

Function	Fund		Principal (910)	Principal (920)	Interest (830)	Total (Principal +Interest)	Misc Other Uses (990)
5110	10	General Fund	9,535,000.00		3,653,839.75	13,188,839.75	
5110	20	Special Revenue Funds					
5110	30	Capital Projects Funds					
5110	40	Debt Service Fund					
5110	90	Permanent Fund					
5120	10	General Fund					
5120	20	Special Revenue Funds					
5120	30	Capital Projects Funds	30,105,000.00			30,105,000.00	
5120	40	Debt Service Fund					

<b>Total Debt Payments - Governmental Funds</b>			<b>\$39,640,000.00</b>		<b>\$3,653,839.75</b>	<b>\$43,293,839.75</b>	
---	--	--	------------------------	--	-----------------------	------------------------	--

Function	Fund		Principal (910)	Principal (920)	Interest (830)	Total (Principal +Interest)
5110	50	Enterprise Fund				
5110	60	Internal Service Fund				
5120	50	Enterprise Fund				
5120	60	Internal Service Fund				

<b>Total Debt Payments - Proprietary Funds</b>						
--	--	--	--	--	--	--

**Debt Details**  
**Governmental Funds/ Activities**

Debt Category	Debt Issue Date (MM/YYYY)	Principal Amounts Only			Debt at End of Fiscal Year	Current Portion Due Within One Year (Principal and Interest)	Interest Paid During Fiscal Year
		Debt at Beginning of Fiscal Year	Additions	Reductions / Repayments			
General Obligation Bonds/Notes – CIB	12/2016		26,930,000.00		26,930,000.00	273,420.00	273,420.00
General Obligation Bonds/Notes – CIB	02/2016	7,055,000.00		700,000.00	6,355,000.00	919,573.00	219,573.00
General Obligation Bonds/Notes – CIB	06/2015	41,875,000.00		2,890,000.00	38,985,000.00	4,512,775.00	1,622,775.00
General Obligation Bonds/Notes – CIB	03/2012	4,995,000.00		3,685,000.00	1,310,000.00	3,831,850.00	146,850.00
General Obligation Bonds/Notes – CIB	03/2012	17,750,000.00		2,260,000.00	15,490,000.00	3,000,000.00	740,000.00
General Obligation Bonds/Notes – CIB	01/2007	30,105,000.00		30,105,000.00		651,221.25	651,221.25
Other Long Term Debt/Liabilities		13,108,857.07		709,008.07	12,399,849.00	929,783.00	425,979.52
Compensated Absences		2,069,363.00	114,871.00		2,184,234.00		
Other Post-Employment Benefits (OPEB)		3,403,697.00	550,043.00		3,953,740.00		
Net Pension Liability		194,580,000.00	8,916,000.00		203,496,000.00		
<b>Totals for Debt Entered:</b>		<b>\$314,941,917.07</b>	<b>\$36,510,914.00</b>	<b>\$40,349,008.07</b>	<b>\$311,103,823.00</b>	<b>\$14,118,622.25</b>	<b>\$4,079,818.77</b>

**Bond Details**  
**Proprietary Funds**

Debt Category	Debt Issue Date (MM/YYYY)	Principal Amounts Only			Debt at End of Fiscal Year	Current Portion Due Within One Year (Principal and Interest)	Interest Paid During Fiscal Year
		Debt at Beginning of Fiscal Year	Additions	Reductions / Repayments			
Net Pension Liability		3,587,000.00	164,000.00		3,751,000.00		
<b>Totals for Debt Entered:</b>		<b>\$3,587,000.00</b>	<b>\$164,000.00</b>		<b>\$3,751,000.00</b>		

**General Fund (10)**

**Section 1: Tuition/Purchased Services as Reported within Expenditure Detail**

	<b>Amount</b>
Tuition Reported in General Fund Expenditures 1000-560	6,609,902.44
Purchased Services in General Fund Expenditures 1000-594 and 1000-597	

<b>Section 1 Total</b>	<b>\$6,609,902.44</b>
------------------------	-----------------------

**Section 2: Tuition Paid to Institution Types During Fiscal Year**

	<b>Tuition Paid For Nonspecial Education</b>	<b>Tuition Paid For Special Education</b>	<b>Total</b>
1 1306 Institutions	10,850.99	36,961.62	47,812.61
2 Institutionalized Children's Programs			
3 Juveniles Incarcerated in Adult Facilities			
4 Residential Treatment Facilities			
5 Other Local Education Agencies			
6 Brick and Mortar Charter Schools	908,977.84	413,699.52	1,322,677.36
7 Cyber Charter Schools	677,323.02	617,448.74	1,294,771.76
8 Career and Technology Centers	1,987,509.52		1,987,509.52
9 Approved Private Schools		1,178,117.69	1,178,117.69
10 PA Chartered Schools for the Deaf and Blind			
11 Private Residential Rehabilitative Institutions	8,615.63	667,047.12	675,662.75
12 Juvenile Detention Centers	1,876.42		1,876.42
13 Special Program Jointures			
14 Other Tuition Not Included Elsewhere In This Section		101,474.33	101,474.33

<b>Section 2 Total</b>	<b>\$3,595,153.42</b>	<b>\$3,014,749.02</b>	<b>\$6,609,902.44</b>
------------------------	-----------------------	-----------------------	-----------------------

**Food Service / Cafeteria Operations Fund (51)**

**2000 Support Services**

**100 Personnel Services – Salaries**

100 Personnel Services – Salaries 21,763.56

**Total Personnel Services – Salaries \$21,763.56**

**200 Personnel Services – Employee Benefits**

210 Group Insurance – Contracted Provider 28.20

220 Social Security Contributions 1,647.85

230 PSERS Retirement Contributions 6,535.59

250 Unemployment Compensation 10.99

260 Workers’ Compensation 87.22

270 Group Insurance – Self-Insurance 10,069.11

**Total Personnel Services – Employee Benefits \$18,378.96**

**300 Purchased Professional and Technical Services**

324 Professional Educational Services – Employee Training and Development Services 1,604.33

330 Other Professional Services 55.39

**Total Purchased Professional and Technical Services \$1,659.72**

**400 Purchased Property Services**

430 Repairs and Maintenance Services 28,334.22

**Total Purchased Property Services \$28,334.22**

**500 Other Purchased Services**

580 Travel 38.73

**Total Other Purchased Services \$38.73**

**600 Supplies**

610 General Supplies 9,418.13

**Total Supplies \$9,418.13**

**Total 2000 Support Services \$79,593.32**

Food Service / Cafeteria Operations Fund (51)

2300 Support Services – Administration

Elementary

Secondary

Federal

Total

300 Purchased Professional and Technical Services

330 Other Professional Services

55.39

**Total Purchased Professional and Technical Services**

**\$55.39**

**Total 2300 Support Services – Administration**

**\$55.39**

Food Service / Cafeteria Operations Fund (51)

2350 Legal and Accounting Services

Elementary

Secondary

Federal

Total

300 Purchased Professional and Technical Services

330 Other Professional Services

55.39

**Total Purchased Professional and Technical Services**

**\$55.39**

**Total 2350 Legal and Accounting Services**

**\$55.39**

Food Service / Cafeteria Operations Fund (51)

2600 Operation and Maintenance of Plant Services

Elementary

Secondary

Federal

Total

100 Personnel Services – Salaries

100 Personnel Services – Salaries

21,763.56

**Total Personnel Services – Salaries**

**\$21,763.56**

200 Personnel Services – Employee Benefits

210 Group Insurance – Contracted Provider

28.20

220 Social Security Contributions

1,647.85

230 PSERS Retirement Contributions

6,535.59

250 Unemployment Compensation

10.99

260 Workers' Compensation

87.22

270 Group Insurance – Self-Insurance

10,069.11

**Total Personnel Services – Employee Benefits**

**\$18,378.96**

400 Purchased Property Services

430 Repairs and Maintenance Services

28,334.22

**Total Purchased Property Services**

**\$28,334.22**

600 Supplies

610 General Supplies

9,418.13

**Total Supplies**

**\$9,418.13**

**Total 2600 Operation and Maintenance of Plant Services**

**\$77,894.87**

Food Service / Cafeteria Operations Fund (51)

	<u>Elementary</u>	<u>Secondary</u>	<u>Federal</u>	<u>Total</u>
<b>2620 Operation of Buildings Services</b>				
<b>600 Supplies</b>				
610 General Supplies				763.83
<b>Total Supplies</b>				<b>\$763.83</b>
<b>Total 2620 Operation of Buildings Services</b>				<b>\$763.83</b>

Food Service / Cafeteria Operations Fund (51)

2640 Care and Upkeep of Equipment Services

Elementary

Secondary

Federal

Total

100 Personnel Services – Salaries

100 Personnel Services – Salaries

21,763.56

**Total Personnel Services – Salaries**

**\$21,763.56**

200 Personnel Services – Employee Benefits

210 Group Insurance – Contracted Provider

28.20

220 Social Security Contributions

1,647.85

230 PSERS Retirement Contributions

6,535.59

250 Unemployment Compensation

10.99

260 Workers' Compensation

87.22

270 Group Insurance – Self-Insurance

10,069.11

**Total Personnel Services – Employee Benefits**

**\$18,378.96**

400 Purchased Property Services

430 Repairs and Maintenance Services

28,334.22

**Total Purchased Property Services**

**\$28,334.22**

600 Supplies

610 General Supplies

8,654.30

**Total Supplies**

**\$8,654.30**

**Total 2640 Care and Upkeep of Equipment Services**

**\$77,131.04**

**Food Service / Cafeteria Operations Fund (51)**

	<u>Elementary</u>	<u>Secondary</u>	<u>Federal</u>	<u>Total</u>
<b>2800 Support Services – Central</b>				
<b>300 <u>Purchased Professional and Technical Services</u></b>				
324 Professional Educational Services – Employee Training and Development Services				1,604.33
<b>Total Purchased Professional and Technical Services</b>				<b>\$1,604.33</b>
<b>500 <u>Other Purchased Services</u></b>				
580 Travel				38.73
<b>Total Other Purchased Services</b>				<b>\$38.73</b>
<b>Total 2800 Support Services – Central</b>				<b>\$1,643.06</b>

Food Service / Cafeteria Operations Fund (51)

	<u>Elementary</u>	<u>Secondary</u>	<u>Federal</u>	<u>Total</u>
<b>2830 Staff Services</b>				
<b>300 <u>Purchased Professional and Technical Services</u></b>				
324 Professional Educational Services – Employee Training and Development Services				1,604.33
<b>Total Purchased Professional and Technical Services</b>				<b>\$1,604.33</b>
<b>500 <u>Other Purchased Services</u></b>				
580 Travel				38.73
<b>Total Other Purchased Services</b>				<b>\$38.73</b>
<b>Total 2830 Staff Services</b>				<b>\$1,643.06</b>

Food Service / Cafeteria Operations Fund (51)

	<u>Elementary</u>	<u>Secondary</u>	<u>Federal</u>	<u>Total</u>
<b>2836 Staff Development Services – Non-Instructional, Non-Certified Staff Only</b>				
<b>300 <u>Purchased Professional and Technical Services</u></b>				
324 Professional Educational Services – Employee Training and Development Services				1,604.33
<b>Total Purchased Professional and Technical Services</b>				<b>\$1,604.33</b>
<b>500 <u>Other Purchased Services</u></b>				
580 Travel				38.73
<b>Total Other Purchased Services</b>				<b>\$38.73</b>
<b>Total 2836 Staff Development Services – Non-Instructional, Non-Certified Staff Only</b>				<b>\$1,643.06</b>

**Food Service / Cafeteria Operations Fund (51)**

**3000 Operation of Non-Instructional Services**

Total

**100 Personnel Services – Salaries**

100 Personnel Services – Salaries 1,064,335.18

**Total Personnel Services – Salaries**

**\$1,064,335.18**

**200 Personnel Services – Employee Benefits**

210 Group Insurance – Contracted Provider 1,554.62

220 Social Security Contributions 78,879.30

230 PSERS Retirement Contributions 333,067.40

250 Unemployment Compensation 532.69

260 Workers’ Compensation 4,225.96

270 Group Insurance – Self-Insurance 257,209.12

299 All Other Employee Benefits 5,953.50

**Total Personnel Services – Employee Benefits**

**\$681,422.59**

**400 Purchased Property Services**

410 Cleaning Services 13,612.50

430 Repairs and Maintenance Services 1,010.00

440 Rentals 14,931.28

**Total Purchased Property Services**

**\$29,553.78**

**500 Other Purchased Services**

530 Communications 4,835.47

540 Advertising 43.80

550 Printing and Binding 310.00

**Total Other Purchased Services**

**\$5,189.27**

**600 Supplies**

610 General Supplies 56,384.80

620 Energy 5,961.32

630 Food 972,716.55

650 Supplies & Fees – Technology Related 21.94

**Total Supplies**

**\$1,035,084.61**

**700 Property**

740 Depreciation 15,745.00

**Total Property**

**\$15,745.00**

**800 Other Objects**

810 Dues and Fees 2,607.00

**Total Other Objects**

**\$2,607.00**

**Total 3000 Operation of Non-Instructional Services**

**\$2,833,937.43**

**Food Service / Cafeteria Operations Fund (51)**

	<u>Elementary</u>	<u>Secondary</u>	<u>Federal</u>	<u>Total</u>
<b>3100 Food Services</b>				
<b>100 Personnel Services – Salaries</b>				
100 Personnel Services – Salaries				1,064,335.18
<b>Total Personnel Services – Salaries</b>				<b>\$1,064,335.18</b>
<b>200 Personnel Services – Employee Benefits</b>				
210 Group Insurance – Contracted Provider				1,554.62
220 Social Security Contributions				78,879.30
230 PSERS Retirement Contributions				333,067.40
250 Unemployment Compensation				532.69
260 Workers' Compensation				4,225.96
270 Group Insurance – Self-Insurance				257,209.12
299 All Other Employee Benefits				5,953.50
<b>Total Personnel Services – Employee Benefits</b>				<b>\$681,422.59</b>
<b>400 Purchased Property Services</b>				
410 Cleaning Services				13,612.50
430 Repairs and Maintenance Services				1,010.00
440 Rentals				14,931.28
<b>Total Purchased Property Services</b>				<b>\$29,553.78</b>
<b>500 Other Purchased Services</b>				
530 Communications				4,835.47
540 Advertising				43.80
550 Printing and Binding				310.00
<b>Total Other Purchased Services</b>				<b>\$5,189.27</b>
<b>600 Supplies</b>				
610 General Supplies				56,384.80
620 Energy				5,961.32
630 Food				972,716.55
650 Supplies & Fees – Technology Related				21.94
<b>Total Supplies</b>				<b>\$1,035,084.61</b>
<b>700 Property</b>				
740 Depreciation				15,745.00
<b>Total Property</b>				<b>\$15,745.00</b>
<b>800 Other Objects</b>				
810 Dues and Fees				2,607.00
<b>Total Other Objects</b>				<b>\$2,607.00</b>
<b>Total 3100 Food Services</b>				<b>\$2,833,937.43</b>

	<u>Food Service(51)</u>	<u>Child Care Operations(52)</u>	<u>Other Enterprise(58)</u>	<u>Internal Service(60)</u>	<u>Total</u>
<b>2000 Support Services</b>					
2300 Support Services - Administration		55.39			55.39
2600 Operation and Maintenance of Plant Services		77,894.87			77,894.87
2800 Support Services - Central		1,643.06			1,643.06
<b>Total Support Services</b>		<b>\$79,593.32</b>			<b>\$79,593.32</b>
<b>3000 Operation of Non-Instructional Services</b>					
3100 Food Services		2,833,937.43			2,833,937.43
<b>Total Operation of Non-Instructional Services</b>		<b>\$2,833,937.43</b>			<b>\$2,833,937.43</b>
<b>TOTAL ACTUAL EXPENDITURES &amp; OTHER FINANCING USES</b>		<b>\$2,913,530.75</b>			<b>\$2,913,530.75</b>