

LEA Name : Spring-Ford Area SD
Address : 857 South Lewis Road
Royersford , PA 19468

County : Montgomery
AUN Number : 123467303
LEA Type : SD

Annual Financial Report

Accuracy Certification Statement

For Fiscal Year Ending

6/30/2016

Pennsylvania Department of Education

&

Office of Comptroller Operations

PDE-2056: Intermediate Unit

PDE-2057: School District, AVTS/CTC, Charter School,
and Special Program Jointure

CERTIFICATION: By signing this page I agree that the electronic data submitted is a complete and accurate statement of the financial operations and status of the local education agency for the fiscal year. It has been prepared in accordance with generally accepted accounting principles and established Commonwealth of PA reporting guidelines.


Chief School Administrator Signature

12-5-16
Date


Board Secretary Signature

12-5-16
Date

James D Fink

Contact Person

jfink@spring-ford.net

Contact Person E-mail Address

(610)705-6000

Ext :

Contact Person Telephone Number

(610)705-6245

Contact Person Fax Number

Audit Certification
Annual Financial Report:
For Fiscal Year Ending 6/30/2016
(Pursuant to PA School Code Section 218(b))

LEA Name : Spring-Ford Area SD
AUN Number : 123467303
County : Montgomery

Audit Certification Due: 12/31/2016

This certification is applicable to:

☒ Orig. Annual Financial Report submitted to
Comptroller Operations: 10-31-16
Date

☐ Annual Financial Report revisions submitted on: _____
Date

Auditing Firm: Maillic LLP

Auditor Contact Name: Eric Gooding
Auditor Phone: 610-482-3153
Auditor E-mail: egooding@maillic.com

CERTIFICATION: By signing this page I agree that the financial statements of the school have been properly audited as noted above pursuant to Article XXIV, and in the auditor's professional opinion, the Annual Financial Report (PDE-2057) submitted on the date referenced is materially consistent with the audited financial statements.

Chief School Administrator

Signature

Date

10-31-16

Board Secretary

Signature

Date

10-31-16

James D Fink

Contact Person

jfink@spring-ford.net

Contact Person E-mail Address

(610)705-6000

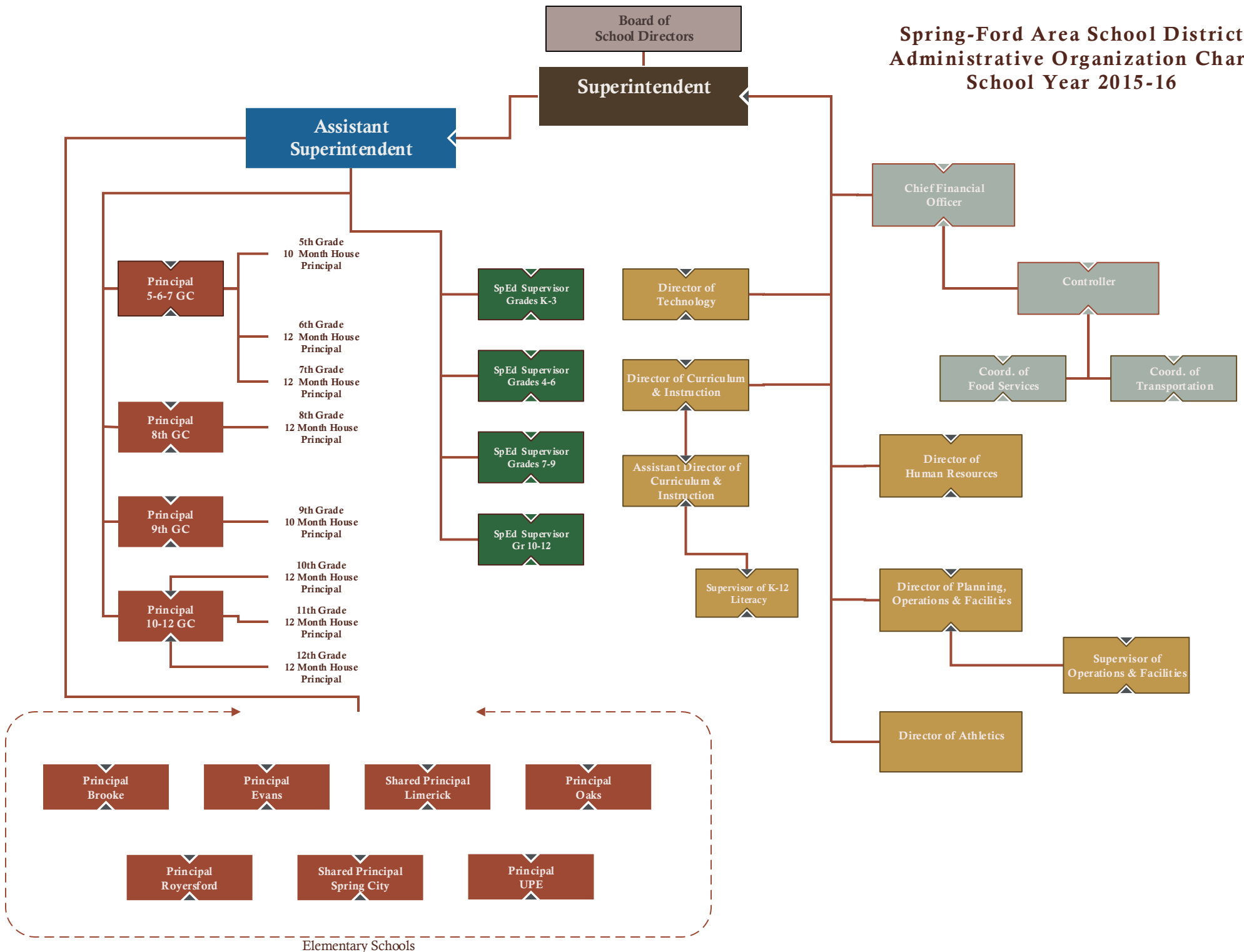
Ext :

Contact Person Telephone Number

(610)705-6245

Contact Person Fax Number

Spring-Ford Area School District Administrative Organization Chart School Year 2015-16



<u>Val Number</u>	<u>Description</u>	<u>Justification</u>
50075	SOIN: Governmental Fund, General Obligation Bond reductions exceed the amount reported as GOB principal payment expenditures in Functions 5110 and 5120, Object 910. Correct or provide a justification. SOIN, GOB Reduction: \$16,930,000.00 Expenditure Detail, Function 5110 and 5120, Object 910: \$16,706,032.71	GOB Series 2010 was refinanced - Per instructions the retired debt was listed as a reduction (\$8,195,000) and the new issue was listed as an addition (\$7,055,000).
50160	SOIN: All Governmental Fund General Obligation Bonds must include an amount for Interest Paid during Fiscal Year. Correct data or enter a justification.	New Bond Refinance - settlement February 2016 - no interest payment or principal payments due/paid until the 16/17 fiscal year.
50180	SOIN: All Governmental Fund General Obligation Bonds must include an amount for Amount Due Within One Year (Principal and Interest). Correct data or enter a justification.	New Bond Refinance - settlement February 2016 - no interest payment or principal payments due/paid until the 16/17 fiscal year.
50450	SESS - 2350 Legal and Accounting Services: SESS Schedule amounts for Special Education vary from prior year by 40% or more. Correct the data or enter a justification. SESS Schedule 2350: \$159,372.26 Prior Year SESS Schedule 2350: \$288,293.76	Increased due process cases.
50470	SESS - 2440 Nursing Services: SESS Schedule amounts for Special Education vary from prior year by 40% or more. Correct the data or enter a justification. SESS Schedule 2440: \$44,946.50 Prior Year SESS Schedule 2440: \$0.00	Increased nursing service contracts per IEPs.

LEA : 123467303 Spring-Ford Area SD

Printed 9/27/2017 10:56:55 AM

Amounts Expressed in Whole Dollars		<u>General Fund</u> <u>(10)</u>	<u>Public Purpose Trust</u> <u>(27)</u>	<u>Other Compt Approved</u> <u>(28)</u>	<u>Athletic / Activity</u> <u>(29)</u>	<u>Capital Reserve (690.</u> <u>1850)</u> <u>(31)</u>
Assets And Deferred Outflows Of Resources						
Assets						
0100	Cash and Cash Equivalents	38,336,309				
0110	Investments	7,349,625				
0120	Taxes Receivable	4,617,905				
0130	Due From Other Funds	273,765				
0141	Due From Other Governments	6,794				
0142	State Revenue Receivable	4,181,583				
0143	Federal Revenue Receivable	20,993				
0145	Other Intergovernmental Revenue Receivable					
0146	Due from Primary Government					
0147	Due from Component Unit					
0150	Other Receivables	342,458				
0170	Inventories					
0180	Prepaid Expenses (Expenditures)	710,383				
0190	Other Current Assets					
Total Assets		\$55,839,815				
0910	Deferred Outflows of Resources					
Total Assets And Deferred Outflows Of Resources		\$55,839,815				

LEA : 123467303 Spring-Ford Area SD

Printed 9/27/2017 10:56:55 AM

Amounts Expressed in Whole Dollars		<u>Capital Reserve (1431</u> <u>(32)</u>	<u>Other Capital Projects</u> <u>Fund</u> <u>(39)</u>	<u>Debt Service</u> <u>(40)</u>	<u>Permanent</u> <u>(90)</u>	<u>Total Governmental</u> <u>Funds</u>
Assets And Deferred Outflows Of Resources						
Assets						
0100	Cash and Cash Equivalents	11,057,527		8,083,106		57,476,942
0110	Investments	1,123,226				8,472,851
0120	Taxes Receivable					4,617,905
0130	Due From Other Funds	1,869,146				2,142,911
0141	Due From Other Governments					6,794
0142	State Revenue Receivable					4,181,583
0143	Federal Revenue Receivable					20,993
0145	Other Intergovernmental Revenue Receivable					
0146	Due from Primary Government					
0147	Due from Component Unit					
0150	Other Receivables	250				342,708
0170	Inventories					
0180	Prepaid Expenses (Expenditures)					710,383
0190	Other Current Assets					
Total Assets		\$14,050,149		\$8,083,106		\$77,973,070
0910	Deferred Outflows of Resources					
Total Assets And Deferred Outflows Of Resources		\$14,050,149		\$8,083,106		\$77,973,070

LEA : 123467303 Spring-Ford Area SD

Printed 9/27/2017 10:56:55 AM

Amounts Expressed in Whole Dollars	<u>General Fund</u> <u>(10)</u>	<u>Public Purpose Trust</u> <u>(27)</u>	<u>Other Compt Approved</u> <u>(28)</u>	<u>Athletic / Activity</u> <u>(29)</u>	<u>Capital Reserve (690.</u> <u>1850)</u> <u>(31)</u>
Liabilities And Deferred Inflows Of Resources And Fund Balances					
Liabilities					
0400 Due to Other Funds	10,567,247				
0411 Due to Other Governments	16,125				
0412 Due to Primary Government					
0413 Due to Component Unit					
0420 Accounts Payable	2,427,323				
0430 Contracts Payable					
0440 Current Portion of Long-Term Debt	137,727				
0450 Short-Term Payables					
0461 Accrued Salaries and Benefits	12,333,677				
0462 Payroll Deductions and Withholding					
0480 Unearned Revenues	696,861				
0490 Other Current Liabilities	2,648,346				
Total Liabilities	\$28,827,306				
0950 Deferred Inflows of Resources	4,142,165				
Fund Balances					
0810 Nonspendable Fund Balance	710,383				
0820 Restricted Fund Balance	1,621,327				
0830 Committed Fund Balance	4,011,152				
0840 Assigned Fund Balance	6,627,979				
0850 Unassigned Fund Balance	9,899,503				
Total Fund Balances	\$22,870,344				
Total Liabilities, Deferred Inflows Of Resources And Fund Balances	\$55,839,815				

LEA : 123467303 Spring-Ford Area SD

Printed 9/27/2017 10:56:55 AM

Amounts Expressed in Whole Dollars		<u>Capital Reserve (1431)</u> <u>(32)</u>	<u>Other Capital Projects</u> <u>Fund</u> <u>(39)</u>	<u>Debt Service</u> <u>(40)</u>	<u>Permanent</u> <u>(90)</u>	<u>Total Governmental</u> <u>Funds</u>
Liabilities And Deferred Inflows Of Resources And Fund Balances						
Liabilities						
0400	Due to Other Funds					10,567,247
0411	Due to Other Governments					16,125
0412	Due to Primary Government					
0413	Due to Component Unit					
0420	Accounts Payable					2,427,323
0430	Contracts Payable					
0440	Current Portion of Long-Term Debt					137,727
0450	Short-Term Payables					
0461	Accrued Salaries and Benefits					12,333,677
0462	Payroll Deductions and Withholding					
0480	Unearned Revenues					696,861
0490	Other Current Liabilities					2,648,346
Total Liabilities						\$28,827,306
0950	Deferred Inflows of Resources					4,142,165
Fund Balances						
0810	Nonspendable Fund Balance					710,383
0820	Restricted Fund Balance					1,621,327
0830	Committed Fund Balance	14,050,149				18,061,301
0840	Assigned Fund Balance			8,083,106		14,711,085
0850	Unassigned Fund Balance					9,899,503
Total Fund Balances		\$14,050,149		\$8,083,106		\$45,003,599
Total Liabilities, Deferred Inflows Of Resources And Fund Balances		\$14,050,149		\$8,083,106		\$77,973,070

Amounts Expressed in Whole Dollars		<u>General Fund</u> <u>(10)</u>	<u>Public Purpose Trust</u> <u>(27)</u>	<u>Other Compt Approved</u> <u>(28)</u>	<u>Athletic / Activity</u> <u>(29)</u>	<u>Capital Reserve (690.</u> <u>1850)</u> <u>(31)</u>
Revenues						
6000	Revenue from Local Sources	113,264,689				
7000	Revenue from State Sources	27,198,095				
8000	Revenue from Federal Sources	717,392				
Total Revenues		\$141,180,176				
Expenditures						
1000	Instruction	81,368,832				
2000	Support Services	40,666,076				
3000	Operation of Non-Instructional Services	2,161,775				
4000	Facilities Acquisition, Construction and Improvement Services	239,548				
5110	Debt Service	13,836,137				
5130	Refund of Prior Year Revenues / Receipts	106				
5140	Short-Term Borrowing – Interest and Costs					
Total Expenditures		\$138,272,474				
Excess (Deficiency) Of Revenues Over Expenditures		\$2,907,702				
Other Financing Sources (Uses)						
9110	Face Value of Bonds Issued					
9120	Proceeds from Refunding of Bonds					
9130	Bond Premiums					
9200	Proceeds from Extended-Term Financing					
9300	Interfund Transfers - IN					
9400	Sale of or Compensation for Loss of Fixed Assets					
9710	Transfers from Component Units					
9720	Transfers from Primary Governments					
9910	Other Financing Sources Not Listed in the 9000 Series					
9990	Insurance Recoveries	19,053				
5120	Debt Service – Refunded Bonds					
5150	Bond Discounts					
5200	Interfund Transfers – Out	1,925,423				
5300	Transfers Out to Component Units/Primary Governments					
Total Other Financing Sources (Uses)		(\$1,906,370)				

LEA : 123467303 Spring-Ford Area SD

Printed 9/27/2017 10:57:00 AM

Amounts Expressed in Whole Dollars		<u>Capital Reserve (1431)</u> <u>(32)</u>	<u>Other Capital Projects</u> <u>Fund</u> <u>(39)</u>	<u>Debt Service</u> <u>(40)</u>	<u>Permanent</u> <u>(90)</u>	<u>Total Governmental</u> <u>Funds</u>
Revenues						
6000	Revenue from Local Sources	28,261		20,210		113,313,160
7000	Revenue from State Sources					27,198,095
8000	Revenue from Federal Sources					717,392
Total Revenues		\$28,261		\$20,210		\$141,228,647
Expenditures						
1000	Instruction					81,368,832
2000	Support Services	330,684				40,996,760
3000	Operation of Non-Instructional Services					2,161,775
4000	Facilities Acquisition, Construction and Improvement Services	1,152,333				1,391,881
5110	Debt Service					13,836,137
5130	Refund of Prior Year Revenues / Receipts					106
5140	Short-Term Borrowing – Interest and Costs					
Total Expenditures		\$1,483,017				\$139,755,491
Excess (Deficiency) Of Revenues Over Expenditures		(\$1,454,756)		\$20,210		\$1,473,156
Other Financing Sources (Uses)						
9110	Face Value of Bonds Issued					
9120	Proceeds from Refunding of Bonds		7,055,000			7,055,000
9130	Bond Premiums					
9200	Proceeds from Extended-Term Financing					
9300	Interfund Transfers - IN	1,909,953				1,909,953
9400	Sale of or Compensation for Loss of Fixed Assets					
9710	Transfers from Component Units					
9720	Transfers from Primary Governments					
9910	Other Financing Sources Not Listed in the 9000 Series					
9990	Insurance Recoveries					19,053
5120	Debt Service – Refunded Bonds		7,055,000			7,055,000
5150	Bond Discounts					
5200	Interfund Transfers – Out					1,925,423
5300	Transfers Out to Component Units/Primary Governments					
Total Other Financing Sources (Uses)		\$1,909,953	\$0			\$3,583

Amounts Expressed in Whole Dollars		<u>General Fund</u> <u>(10)</u>	<u>Public Purpose Trust</u> <u>(27)</u>	<u>Other Compt Approved</u> <u>(28)</u>	<u>Athletic / Activity</u> <u>(29)</u>	<u>Capital Reserve</u> <u>(690.</u> <u>1850)</u> <u>(31)</u>
Special And Extraordinary Items						
9920	Special Items – Gains					
9930	Extraordinary Items – Gains					
5520	Special Items – Losses					
5530	Extraordinary Items – Losses					
Net Change In Fund Balances		\$1,001,332				
Fund Balance						
0001	Fund Balance - Beginning of Fiscal Year	21,869,012				
Fund Balance - End Of Year		\$22,870,344				

Amounts Expressed in Whole Dollars		<u>Capital Reserve (1431</u> <u>(32)</u>	<u>Other Capital Projects</u> <u>Fund</u> <u>(39)</u>	<u>Debt Service</u> <u>(40)</u>	<u>Permanent</u> <u>(90)</u>	<u>Total Governmental</u> <u>Funds</u>
Special And Extraordinary Items						
9920	Special Items – Gains					
9930	Extraordinary Items – Gains					
5520	Special Items – Losses					
5530	Extraordinary Items – Losses					
Net Change In Fund Balances		\$455,197		\$20,210		\$1,476,739
Fund Balance						
0001	Fund Balance - Beginning of Fiscal Year	13,594,952		8,062,896		43,526,860
Fund Balance - End Of Year		\$14,050,149		\$8,083,106		\$45,003,599

LEA : 123467303 Spring-Ford Area SD

Printed 9/27/2017 10:57:00 AM

Amounts Expressed in Whole Dollars	Food Service (51)	Child Care Operations (52)	Other Enterprise (58)	TOTAL	Internal Service (60)
Assets And Deferred Outflows Of Resources					
Current Assets					
0100 Cash and Cash Equivalents	640,101			640,101	
0110 Investments					
0130 Due From Other Funds	26,777			26,777	8,630,517
0141 Due From Other Governments					
0142 State Revenue Receivable	3,247			3,247	
0143 Federal Revenue Receivable	34,370			34,370	
0146 Due from Primary Government					
0147 Due from Component Unit					
0150 Other Receivables	4,141			4,141	
0170 Inventories	94,023			94,023	
0180 Prepaid Expenses (Expenditures)					
0190 Other Current Assets					
Total Current Assets	\$802,659			\$802,659	\$8,630,517
Noncurrent Assets					
0211 Land					
0212 Site Improvements (Net)					
0220 Buildings and Building Improvements (Net)					
0230 Machinery, Equipment and Furniture (Net)	209,965			209,965	
0250 Construction in Progress					
0260 Long Term Prepayments					
0290 Other Noncurrent Assets					
Total Noncurrent Assets	\$209,965			\$209,965	
0910 Deferred Outflows of Resources	334,000			334,000	
Total Assets And Deferred Outflows Of Resources	\$1,346,624			\$1,346,624	\$8,630,517

LEA : 123467303 Spring-Ford Area SD

Printed 9/27/2017 10:57:00 AM

Amounts Expressed in Whole Dollars	Food Service (51)	Child Care Operations (52)	Other Enterprise (58)	TOTAL	Internal Service (60)
Liabilities And Deferred Inflows Of Resources And Net Position					
Current Liabilities					
0400 Due to Other Funds	232,958			232,958	
0411 Due to Other Governments					
0413 Due to Component Unit					
0420 Accounts Payable	2,480			2,480	
0430 Contracts Payable					
0440 Current Portion of Long-Term Debt					
0450 Short-Term Payables					
0461 Accrued Salaries and Benefits	96,060			96,060	
0462 Payroll Deductions and Withholding					
0480 Unearned Revenues	154,623			154,623	
0490 Other Current Liabilities					
Total Current Liabilities	\$486,121			\$486,121	
Noncurrent Liabilities					
0510 Bonds Payable					
0520 Extended-Term Financing Agreements Payable					
0530 Lease-Purchase Obligations					
0540 Accumulated Compensated Absences	57,542			57,542	
0550 Authority Lease Obligations					
0560 Other Post-Employment Benefits (OPEB)					
0570 Net Pension Liability					
0599 Other Noncurrent Liabilities	3,587,000			3,587,000	
Total Noncurrent Liabilities	\$3,644,542			\$3,644,542	
Total Liabilities	\$4,130,663			\$4,130,663	
0950 Deferred Inflows of Resources	22,000			22,000	
Net Position					
0791 Net Investment in Capital Assets	303,961			303,961	
0008 Restricted Net Position (0792 – 0798)					
0799 Unrestricted Net Position	(3,110,000)			(3,110,000)	8,630,517
Total Net Position	(\$2,806,039)			(\$2,806,039)	\$8,630,517
Total Liabilities And Deferred Inflows Of Resources And Net Position	\$1,346,624			\$1,346,624	\$8,630,517

Amounts Expressed in Whole Dollars	<u>Food Service</u> <u>(51)</u>	<u>Child Care Operations</u> <u>(52)</u>	<u>Other Enterprise</u> <u>(58)</u>	<u>TOTAL</u>	<u>Internal Service</u> <u>(60)</u>
Operating Revenues					
6600 Food Service Revenue	1,877,704			1,877,704	
0071 Charges for Services					
0072 Other Operating Revenue					
Total Operating Revenues	\$1,877,704			\$1,877,704	
Operating Expenses					
100 Personnel Services – Salaries	1,059,846			1,059,846	
200 Personnel Services – Employee Benefits	675,312			675,312	
300 Purchased Professional and Technical Services					
400 Purchased Property Services	69,533			69,533	
500 Other Purchased Services	3,289			3,289	
600 Supplies	996,942			996,942	
740 Depreciation	15,722			15,722	
810 Dues and Fees	20,603			20,603	
890 Miscellaneous Expenditures					
Total Operating Expenses	\$2,841,247			\$2,841,247	
Operating Income (Loss)	(\$963,543)			(\$963,543)	
Non Operating Revenues (Expenses)					
6500 Earnings on Investments	1,018			1,018	
6920 Contributions and Donations from Private Sources					
6930 Gains or Losses on Sale of Fixed Assets					
6991 Refunds of a Prior Year Expenditure					
7000 Revenue from State Sources	224,117			224,117	
8000 Revenue from Federal Sources	681,440			681,440	
820 Claims and Judgments Against the LEA					
830 Interest					
TOTAL Non Operating Revenues (Expenses)	\$906,575			\$906,575	
Income (Loss) Before Contributions And Transfers	(\$56,968)			(\$56,968)	

Amounts Expressed in Whole Dollars	<u>Food Service</u> <u>(51)</u>	<u>Child Care Operations</u> <u>(52)</u>	<u>Other Enterprise</u> <u>(58)</u>	<u>TOTAL</u>	<u>Internal Service</u> <u>(60)</u>
Contributions, Transfers, and Special and Extraordinary Items					
5200 Interfund Transfers – Out					
5300 Transfers Out to Component Units/Primary Governments					
5520 Special Items – Losses					
5530 Extraordinary Items – Losses					
9300 Interfund Transfers - IN	15,470			15,470	
9500 Capital Contributions					
9700 Transfers IN From Component Units/Primary Governments					
9920 Special Items – Gains					
9930 Extraordinary Items – Gains					
Change In Net Position	(\$41,498)			(\$41,498)	
0002 Net Position - Beginning of Fiscal Year	(2,764,541)			(2,764,541)	8,630,517
0003 Accounting Changes / Residual Equity Transfers					
Net Position - End Of Year	(\$2,806,039)			(\$2,806,039)	\$8,630,517

LEA : 123467303 Spring-Ford Area SD

Printed 9/27/2017 10:57:06 AM

Amounts Expressed in Whole Dollars	Food Service (51)	Child Care Operations (52)	Other Enterprise (58)	TOTAL	Internal Service(60)
Cash Flows From Operating Activities					
0011 Cash Receipts From Users	1,910,001			1,910,001	
0012 Cash Receipts From Assessments Made to Other Funds					
0013 Cash Receipts From Earnings on Investments					
0014 Cash Receipts From Other Operating Revenue					
0015 Cash Payments To Employees For Services	1,482,183			1,482,183	
0016 Cash Payments For Insurance Claims					
0017 Cash Payments To Suppliers For Goods and Services	1,090,506			1,090,506	
0018 Cash Payments For Other Operating Expenses	63,023			63,023	
Net Cash Provided By (Used For) Operating Activities	(\$725,711)			(\$725,711)	
Cash Flows From Non-Capital Financing Activities					
0021 Receipts From Local Sources - 6000					
0022 Receipts From State Sources - 7000	229,008			229,008	
0023 Receipts From Federal Sources -8000	609,642			609,642	
0024 Notes and Loans Received (Repaid)					
0025 Interest Paid on Notes/Loans - 5100-830					
0026 Operating Transfers In (Out)/Residual Equity Trans					
0027 Operating Transfers In (Out) Primary Government / Comp Unit					
0028 Receipts From Refund of Prior Year Expenditures - 6991					
0029 Special and Extraordinary Gains (losses)					
Net Cash Prov By (Used for) Non-Capital Financing Activities	\$838,650			\$838,650	
Cash Flows From Capital and Related Financing Activities					
0031 Payments For Fac Acq, Const, and Imp - 4000	(13,797)			(13,797)	
0032 Gain / (Loss) on Sale of Fixed Assets - 6930					
0033 Proceeds From Extended Term Financing - 9200					
0034 Principal Paid on Financing Agreements					
0035 Interest Paid on Financing Agreements - 5100-830					
0036 (Inc) Dec in Contributed Capital					
Net Cash Prov By (Used for) Capital and Related Financing Activities	(\$13,797)			(\$13,797)	
Cash Flows From Investing Activities					
0041 Earnings on Investments - 6500	1,018			1,018	
0042 Purchase of Inv Securities / Deposits to Inv Pools					
0043 Receipts From Investment Pool Withdrawals					
0044 Proceeds from Sale and Maturity of Inv Securities					
0045 Loans Received (Paid)					
Net Cash Prov By (Used for) Investing Activities	\$1,018			\$1,018	

LEA : 123467303 Spring-Ford Area SD

Printed 9/27/2017 10:57:06 AM

	Food Service (51)	Child Care Operations (52)	Other Enterprise (58)	TOTAL	Internal Service (60)
Net Increase (Decrease) in Cash Flows	100,160			100,160	
0004 Cash and Cash Equivalents Beginning of Year	539,941			539,941	
Cash and Cash Equivalents at Year End	\$640,101			\$640,101	
Reconciliation of Operating Income (Loss) To Net Cash Provided by (Used For) Operating Activities					
0005 Operating Income (Loss) per REP	(963,543)			(963,543)	
Adjustments					
0051 Depreciation and Net Amortization	15,728			15,728	
0052 Provision for Uncollectible Accounts					
0053 Other Adjustments					
Effect of Changes in Assets, Liabilities, Deferred Outflows and Deferred Inflows					
0054 (Inc) Dec In Accounts Receivable (0120-0150)	(1,627)			(1,627)	
0055 Advances to Other Funds (0160)	(107,135)			(107,135)	
0056 (Inc) Dec in Inventories (0170)	(18,950)			(18,950)	
0057 (Inc) Dec in Prepaid Expenses (0180)					
0058 (Inc) Dec in Other Current or Noncurrent Assets	124,578			124,578	
0064 Deferred Outflows (0910)					
0059 Inc (Dec) in Accounts Payable (0400-0450)	1,358			1,358	
0060 Inc (Dec) in Accrued Salaries/Benefits (0461)	96,060			96,060	
0065 Inc (Dec) in Net Pension Liabilities (0570)	90,000			90,000	
0066 Inc (Dec) in Other Postemp Benefit Oblig (0560)					
0061 Inc (Dec) in Payroll Deductions/Withholding (0462)					
0062 Inc (Dec) in Unearned Revenue (0480)	33,925			33,925	
0063 Inc (Dec) in Other Current or Noncurrent Liabilities	3,895			3,895	
0067 Deferred Inflows (0950)					
Total Adjustments	\$237,832			\$237,832	
Cash Provided By (Used for) Total	(\$725,711)			(\$725,711)	

COMBINED STATEMENT OF CASH FLOWS
SCHEDULE OF NONCASH INVESTING, CAPITAL, AND FINANCING ACTIVITIES

Explanation of Transaction and Balance Sheet Effect	Amount
Total	

LEA : 123467303 Spring-Ford Area SD

Printed 9/27/2017 10:57:07 AM

Amounts Expressed in Whole Dollars	<u>Private Purpose Trust</u> <u>(71)</u>	<u>Investment Trust</u> <u>(72)</u>	<u>Pension Trust</u> <u>(73)</u>	<u>Activity</u> <u>(81)</u>
Assets And Deferred Outflows Of Resources				
Assets				
0100 Cash and Cash Equivalents	45,413			252,859
0110 Investments	39,109			
0130 Due From Other Funds				
0147 Due from Component Unit				
0150 Other Receivables				
0170 Inventories				
0180 Prepaid Expenses (Expenditures)				
0190 Other Current Assets				
0220 Buildings and Building Improvements (Net)				
0230 Machinery, Equipment and Furniture (Net)				
Total Assets	\$84,522			\$252,859
0910 Deferred Outflows of Resources				
Total Assets And Deferred Outflows Of Resources	\$84,522			\$252,859

LEA : 123467303 Spring-Ford Area SD

Printed 9/27/2017 10:57:07 AM

Amounts Expressed in Whole Dollars		<u>Other Agency</u> <u>(89)</u>	<u>Discrete Component Units</u> <u>(98)</u>	<u>Discrete Component Units</u> <u>(99)</u>	<u>Total Fiduciary Funds</u>
Assets And Deferred Outflows Of Resources					
Assets					
0100	Cash and Cash Equivalents				298,272
0110	Investments				39,109
0130	Due From Other Funds				
0147	Due from Component Unit				
0150	Other Receivables				
0170	Inventories				
0180	Prepaid Expenses (Expenditures)				
0190	Other Current Assets				
0220	Buildings and Building Improvements (Net)				
0230	Machinery, Equipment and Furniture (Net)				
Total Assets					\$337,381
0910	Deferred Outflows of Resources				
Total Assets And Deferred Outflows Of Resources					\$337,381

LEA : 123467303 Spring-Ford Area SD

Printed 9/27/2017 10:57:07 AM

Amounts Expressed in Whole Dollars	<u>Private Purpose Trust</u> (71)	<u>Investment Trust</u> (72)	<u>Pension Trust</u> (73)	<u>Activity</u> (81)
Liabilities, Deferred Inflows Of Resources And Net Position				
Liabilities				
0400 Due to Other Funds				
0411 Due to Other Governments				
0412 Due to Primary Government				
0413 Due to Component Unit				
0420 Accounts Payable	400			252,859
0430 Contracts Payable				
0450 Short-Term Payables				
0461 Accrued Salaries and Benefits				
0462 Payroll Deductions and Withholding				
0480 Unearned Revenues				
0490 Other Current Liabilities				
Total Liabilities	\$400			\$252,859
0950 Deferred Inflows of Resources				
Net Position				
0791 Net Investment in Capital Assets				
0009 Restricted Net Position (0792 – 0798)	84,122			
0799 Unrestricted Net Position				
Total Net Position	\$84,122			
Total Liabilities, Deferred Inflows Of Resources And Net Position	\$84,522			\$252,859

LEA : 123467303 Spring-Ford Area SD

Printed 9/27/2017 10:57:07 AM

Amounts Expressed in Whole Dollars

<u>Other Agency</u>	<u>Discrete Component Units</u>	<u>Discrete Component Units</u>	<u>Total Fiduciary Funds</u>
(89)	(98)	(99)	

Liabilities, Deferred Inflows Of Resources And Net Position

Liabilities

0400	Due to Other Funds			
0411	Due to Other Governments			
0412	Due to Primary Government			
0413	Due to Component Unit			
0420	Accounts Payable			253,259
0430	Contracts Payable			
0450	Short-Term Payables			
0461	Accrued Salaries and Benefits			
0462	Payroll Deductions and Withholding			
0480	Unearned Revenues			
0490	Other Current Liabilities			

Total Liabilities				\$253,259
--------------------------	--	--	--	------------------

0950 Deferred Inflows of Resources

Net Position

0791	Net Investment in Capital Assets			
0009	Restricted Net Position (0792 – 0798)			84,122
0799	Unrestricted Net Position			

Total Net Position				\$84,122
---------------------------	--	--	--	-----------------

Total Liabilities, Deferred Inflows Of Resources And Net Position				\$337,381
--	--	--	--	------------------

LEA : 123467303 Spring-Ford Area SD

Printed 9/27/2017 10:57:08 AM

Amounts Expressed in Whole Dollars	<u>Private Purpose Trust</u> <u>(71)</u>	<u>Investment Trust</u> <u>(72)</u>	<u>Pension Trust</u> <u>(73)</u>	<u>Discrete Component</u> <u>Units</u> <u>(98)</u>	<u>Discrete Component</u> <u>Units</u> <u>(99)</u>	<u>Total Fiduciary</u> <u>Funds</u>
Additions						
0091 Gifts and Contributions	2,900					2,900
0092 Other Additions	172					172
Deductions						
0093 Scholarships Awarded	3,750					3,750
0094 Other Deductions						
Change In Net Position	(\$678)					(\$678)
0006 Net Position – Beginning of Fiscal Year	84,800					84,800
0007 Net Position Held in Trust for Pension Benefits						
Net Position - End of Fiscal Year	\$84,122					\$84,122

LEA : 123467303 Spring-Ford Area SD

General Fund (10)

Printed 9/27/2017 10:57:08 AM

Page - 1 of 4

	Revenue Reported In Current Year	Current Year Tax Accrual	Prior Year Tax Accrual	Taxes Collected In Current Year
Revenue from Local Sources				
6111 Current Real Estate Taxes	92,920,011.59			92,920,011.59
6112 Interim Real Estate Taxes	1,034,694.85			1,034,694.85
6113 Public Utility Realty Taxes	117,876.18			117,876.18
6114 Payments in Lieu of Current Taxes - State / Local	1,663,799.38			1,663,799.38
6120 Current Per Capita Taxes, Section 679	101,370.90			101,370.90
6141 Current Act 511 Per Capita Taxes	101,370.90			101,370.90
6143 Current Act 511 Local Services Taxes	154,375.55			154,375.55
6151 Current Act 511 Earned Income Taxes	9,822,594.29			9,822,594.29
6153 Current Act 511 Real Estate Transfer Taxes	1,749,767.77			1,749,767.77
6411 Delinquent Real Estate Taxes	2,408,896.27			2,408,896.27
6420 Delinquent Per Capita Taxes, Section 679	40,562.53			40,562.53
6500 Earnings on Investments	193,439.65			
6700 Revenues from LEA Activities	349,868.06			
6810 Revenue from Local Governmental Units	74,176.88			
6829 State Revenue Received from Other Sources	5,000.00			
6831 Federal Revenue Received from Other Pennsylvania Public LEAs	6,655.79			
6832 Federal IDEA Revenue Received as Pass Through	1,582,066.56			
6910 Rentals	342,943.50			
6920 Contributions and Donations from Private Sources	131,270.10			
6942 Summer School Tuition	7,840.00			
6944 Receipts from Other LEAs in Pennsylvania - Education	6,793.92			
6991 Refunds of a Prior Year Expenditure	274,044.57			
6992 Energy Efficiency Revenues and Incentives	74,419.17			
6999 Other Revenues Not Specified Above	100,850.90			
TOTAL Revenue from Local Sources	\$113,264,689.31			\$110,115,320.21

	Revenue Reported In Current Year			
Revenue from State Sources				
7110 Basic Education Funding	9,089,423.85			
7160 Tuition for Orphans Subsidy	110,174.87			
7271 Special Education funds for School-Aged Pupils	2,575,419.27			
7311 Pupil Transportation Subsidy	1,534,653.38			
7312 Nonpublic and Charter School Pupil Transportation Subsidy	390,672.89			
7320 Rental and Sinking Fund Payments / Building Reimbursement Subsidy	960,000.00			
7330 Health Services (Medical, Dental, Nurse, Act 25)	171,915.42			
7340 State Property Tax Reduction Allocation	2,385,484.94			
7505 Ready to Learn Block Grant	442,498.00			
7810 State Share of Social Security and Medicare Taxes	2,037,378.29			
7820 State Share of Retirement Contributions	7,500,474.39			
TOTAL Revenue from State Sources	\$27,198,095.30			

	Revenue Reported <u>In Current Year</u>			
<u>Revenue from Federal Sources</u>				
8514 NCLB, Title I - Improving the Academic Achievement of the Disadvantaged	262,816.00			
8515 NCLB, Title II - Preparing, Training and Recruiting High Quality Teachers and Principals	105,622.00			
8810 School-Based Access Medicaid Reimbursement Program (SBAP) Reimbursements (Access)	300,000.00			
8820 Medical Assistance Reimbursement for Administrative Claiming (Quarterly) Program	48,953.68			
TOTAL Revenue from Federal Sources	\$717,391.68			

Revenue Reported In Current Year				
Other Financing Sources				
9990 Insurance Recoveries	19,052.73			
TOTAL Other Financing Sources	\$19,052.73			
TOTAL FROM ALL SOURCES	\$141,199,229.02			\$110,115,320.21

Revenue from Local Sources	113,264,689.31
Revenue from State Sources	27,198,095.30
Revenue from Federal Sources	717,391.68
Other Financing Sources	19,052.73
TOTAL FROM ALL SOURCES	\$141,199,229.02

LEA : 123467303 Spring-Ford Area SD

Printed 9/27/2017 10:57:10 AM

General Fund (10)

1000 Instruction		Total
100 <u>Personnel Services – Salaries</u>		
100 Personnel Services – Salaries		42,270,864.87
Total Personnel Services – Salaries		\$42,270,864.87
200 <u>Personnel Services – Employee Benefits</u>		
210 Group Insurance – Contracted Provider		35,623.77
220 Social Security Contributions		3,125,040.66
230 PSERS Retirement Contributions		10,891,876.53
250 Unemployment Compensation		27,756.36
260 Workers’ Compensation		271,732.45
270 Group Insurance – Self-Insurance		9,746,044.10
290 Other Current Employee Benefits		16,942.50
Total Personnel Services – Employee Benefits		\$24,115,016.37
300 <u>Purchased Professional and Technical Services</u>		
322 Professional Educational Services – Ius		1,570,906.84
329 Professional Educational Services – Other		1,946,517.99
330 Other Professional Services		1,027,325.10
Total Purchased Professional and Technical Services		\$4,544,749.93
400 <u>Purchased Property Services</u>		
430 Repairs and Maintenance Services		84,015.60
440 Rentals		294,989.76
Total Purchased Property Services		\$379,005.36
500 <u>Other Purchased Services</u>		
530 Communications		11,129.58
550 Printing and Binding		13,200.00
561 Tuition To Other School Districts Within the State		14,062.89
562 Tuition To Pennsylvania Charter Schools		2,473,955.15
564 Tuition To Career and Technology Centers		2,659,011.85
567 Tuition To Approved Private Schools (APS) and PA Chartered Schools for the Deaf and Blind		1,620,038.24
568 Tuition To Private Residential Rehabilitative Institutions (PRRI) [In-State] and Detention Centers		1,010,399.48
569 Tuition – Other		45,932.40
580 Travel		7,562.38
594 IU Payment By Withholding for Institutionalized Children’s Programs – Special Classes		11,790.56
Total Other Purchased Services		\$7,867,082.53
600 <u>Supplies</u>		
610 General Supplies		502,594.21
630 Food		2,202.25
640 Books and Periodicals		1,362,687.93
650 Supplies & Fees – Technology Related		69,195.75
Total Supplies		\$1,936,680.14
700 <u>Property</u>		
750 Equipment – Original and Additional		132,638.19
760 Equipment – Replacement		60,753.03
Total Property		\$193,391.22

LEA : 123467303 Spring-Ford Area SD

Printed 9/27/2017 10:57:10 AM

General Fund (10)		
1000 Instruction		<u>Total</u>
800 <u>Other Objects</u>		
810 Dues and Fees		43,492.02
890 Miscellaneous Expenditures		18,550.00
Total Other Objects		\$62,042.02
Total 1000 Instruction		\$81,368,832.44

LEA : 123467303 Spring-Ford Area SD

Printed 9/27/2017 10:57:10 AM

General Fund (10)

1100 Regular Programs – Elementary / Secondary

	Elementary	Secondary	Federal	Total
100 <u>Personnel Services – Salaries</u>				
100 Personnel Services – Salaries	15,636,467.24	14,647,256.07	236,263.50	30,519,986.81
Total Personnel Services – Salaries	\$15,636,467.24	\$14,647,256.07	\$236,263.50	\$30,519,986.81
200 <u>Personnel Services – Employee Benefits</u>				
210 Group Insurance – Contracted Provider	11,552.43	10,155.82	212.78	21,921.03
220 Social Security Contributions	1,166,054.29	1,087,948.53	9,037.08	2,263,039.90
230 PSERS Retirement Contributions	4,057,267.65	3,774,023.95	34,437.99	7,865,729.59
250 Unemployment Compensation	10,356.33	9,687.34		20,043.67
260 Workers' Compensation	101,417.64	94,785.95		196,203.59
270 Group Insurance – Self-Insurance	3,163,519.11	2,828,584.75	86,922.55	6,079,026.41
290 Other Current Employee Benefits	8,902.50	6,960.00		15,862.50
Total Personnel Services – Employee Benefits	\$8,519,069.95	\$7,812,146.34	\$130,610.40	\$16,461,826.69
300 <u>Purchased Professional and Technical Services</u>				
322 Professional Educational Services – Ius		13,832.58		13,832.58
329 Professional Educational Services – Other	833,167.77	591,803.00		1,424,970.77
Total Purchased Professional and Technical Services	\$833,167.77	\$605,635.58		\$1,438,803.35
400 <u>Purchased Property Services</u>				
430 Repairs and Maintenance Services	42,437.13	41,428.47		83,865.60
440 Rentals	152,262.01	142,727.75		294,989.76
Total Purchased Property Services	\$194,699.14	\$184,156.22		\$378,855.36
500 <u>Other Purchased Services</u>				
530 Communications	4,465.20	6,650.47		11,115.67
550 Printing and Binding	2,605.00	10,595.00		13,200.00
561 Tuition To Other School Districts Within the State	1,977.48	1,260.72		3,238.20
562 Tuition To Pennsylvania Charter Schools	635,365.24	911,776.41		1,547,141.65
568 Tuition To Private Residential Rehabilitative Institutions (PRRI) [In-State] and Detention Centers	300.00	36,779.25		37,079.25
569 Tuition – Other		5,412.40		5,412.40
580 Travel	963.11	1,879.89		2,843.00
Total Other Purchased Services	\$645,676.03	\$974,354.14		\$1,620,030.17
600 <u>Supplies</u>				
610 General Supplies	234,933.58	233,092.57	340.19	468,366.34
630 Food	700.48	658.25	175.28	1,534.01
640 Books and Periodicals	940,938.79	357,954.26	375.29	1,299,268.34
650 Supplies & Fees – Technology Related	46,664.43	4,574.49	1,982.25	53,221.17
Total Supplies	\$1,223,237.28	\$596,279.57	\$2,873.01	\$1,822,389.86
700 <u>Property</u>				
750 Equipment – Original and Additional	33,375.89	78,693.98	3,390.11	115,459.98
760 Equipment – Replacement	9,930.98	50,522.43		60,453.41
Total Property	\$43,306.87	\$129,216.41	\$3,390.11	\$175,913.39
800 <u>Other Objects</u>				
810 Dues and Fees	8,525.83	34,712.14		43,237.97

LEA : 123467303 Spring-Ford Area SD

Printed 9/27/2017 10:57:10 AM

General Fund (10)				
1100 Regular Programs – Elementary / Secondary	<u>Elementary</u>	<u>Secondary</u>	<u>Federal</u>	<u>Total</u>
800 <u>Other Objects</u>				
890 Miscellaneous Expenditures		17,350.00		17,350.00
Total Other Objects	\$8,525.83	\$52,062.14		\$60,587.97
Total 1100 Regular Programs – Elementary / Secondary	\$27,104,150.11	\$25,001,106.47	\$373,137.02	\$52,478,393.60

LEA : 123467303 Spring-Ford Area SD

Printed 9/27/2017 10:57:10 AM

General Fund (10)

1110 Regular Programs

	Elementary	Secondary	Federal	Total
100 <u>Personnel Services – Salaries</u>				
100 Personnel Services – Salaries	15,636,467.24	14,647,256.07		30,283,723.31
Total Personnel Services – Salaries	\$15,636,467.24	\$14,647,256.07		\$30,283,723.31
200 <u>Personnel Services – Employee Benefits</u>				
210 Group Insurance – Contracted Provider	11,552.43	10,155.82		21,708.25
220 Social Security Contributions	1,166,054.29	1,087,948.53		2,254,002.82
230 PSERS Retirement Contributions	4,057,267.65	3,774,023.95		7,831,291.60
250 Unemployment Compensation	10,356.33	9,687.34		20,043.67
260 Workers' Compensation	101,417.64	94,785.95		196,203.59
270 Group Insurance – Self-Insurance	3,163,519.11	2,828,584.75		5,992,103.86
290 Other Current Employee Benefits	8,902.50	6,960.00		15,862.50
Total Personnel Services – Employee Benefits	\$8,519,069.95	\$7,812,146.34		\$16,331,216.29
300 <u>Purchased Professional and Technical Services</u>				
322 Professional Educational Services – Ius		13,832.58		13,832.58
329 Professional Educational Services – Other	833,167.77	591,803.00		1,424,970.77
Total Purchased Professional and Technical Services	\$833,167.77	\$605,635.58		\$1,438,803.35
400 <u>Purchased Property Services</u>				
430 Repairs and Maintenance Services	42,437.13	41,428.47		83,865.60
440 Rentals	152,262.01	142,727.75		294,989.76
Total Purchased Property Services	\$194,699.14	\$184,156.22		\$378,855.36
500 <u>Other Purchased Services</u>				
530 Communications	4,465.20	6,650.47		11,115.67
550 Printing and Binding	2,605.00	10,595.00		13,200.00
561 Tuition To Other School Districts Within the State	1,977.48	1,260.72		3,238.20
562 Tuition To Pennsylvania Charter Schools	635,365.24	911,776.41		1,547,141.65
568 Tuition To Private Residential Rehabilitative Institutions (PRRI) [In-State] and Detention Centers	300.00	36,779.25		37,079.25
569 Tuition – Other		5,412.40		5,412.40
580 Travel	963.11	1,879.89		2,843.00
Total Other Purchased Services	\$645,676.03	\$974,354.14		\$1,620,030.17
600 <u>Supplies</u>				
610 General Supplies	234,933.58	233,092.57	340.19	468,366.34
630 Food	700.48	658.25	175.28	1,534.01
640 Books and Periodicals	940,938.79	357,954.26	375.29	1,299,268.34
650 Supplies & Fees – Technology Related	46,664.43	4,574.49	1,982.25	53,221.17
Total Supplies	\$1,223,237.28	\$596,279.57	\$2,873.01	\$1,822,389.86
700 <u>Property</u>				
750 Equipment – Original and Additional	33,375.89	78,693.98	3,390.11	115,459.98
760 Equipment – Replacement	9,930.98	50,522.43		60,453.41
Total Property	\$43,306.87	\$129,216.41	\$3,390.11	\$175,913.39
800 <u>Other Objects</u>				
810 Dues and Fees	8,525.83	34,712.14		43,237.97

LEA : 123467303 Spring-Ford Area SD

Printed 9/27/2017 10:57:10 AM

General Fund (10)

1110 Regular Programs

800 Other Objects

890 Miscellaneous Expenditures			17,350.00	17,350.00
Total Other Objects	\$8,525.83	\$52,062.14		\$60,587.97
Total 1110 Regular Programs	\$27,104,150.11	\$25,001,106.47	\$6,263.12	\$52,111,519.70

LEA : 123467303 Spring-Ford Area SD

Printed 9/27/2017 10:57:10 AM

General Fund (10)

1190 Federally-Funded Regular Programs	<u>Elementary</u>	<u>Secondary</u>	<u>Federal</u>	<u>Total</u>
100 <u>Personnel Services – Salaries</u>				
100 Personnel Services – Salaries			236,263.50	236,263.50
Total Personnel Services – Salaries			\$236,263.50	\$236,263.50
200 <u>Personnel Services – Employee Benefits</u>				
210 Group Insurance – Contracted Provider			212.78	212.78
220 Social Security Contributions			9,037.08	9,037.08
230 PSERS Retirement Contributions			34,437.99	34,437.99
270 Group Insurance – Self-Insurance			86,922.55	86,922.55
Total Personnel Services – Employee Benefits			\$130,610.40	\$130,610.40
Total 1190 Federally-Funded Regular Programs			\$366,873.90	\$366,873.90

LEA : 123467303 Spring-Ford Area SD

Printed 9/27/2017 10:57:10 AM

General Fund (10)

1200 Special Programs – Elementary / Secondary

	Elementary	Secondary	Federal	Total
100 <u>Personnel Services – Salaries</u>				
100 Personnel Services – Salaries	6,842,184.53	4,575,621.30	310,527.23	11,728,333.06
Total Personnel Services – Salaries	\$6,842,184.53	\$4,575,621.30	\$310,527.23	\$11,728,333.06
200 <u>Personnel Services – Employee Benefits</u>				
210 Group Insurance – Contracted Provider	8,448.14	5,141.80	112.80	13,702.74
220 Social Security Contributions	504,944.91	338,524.38	16,850.48	860,319.77
230 PSERS Retirement Contributions	1,788,201.04	1,195,149.70	37,048.11	3,020,398.85
250 Unemployment Compensation	4,579.70	3,118.20		7,697.90
260 Workers' Compensation	44,848.09	30,535.86		75,383.95
270 Group Insurance – Self-Insurance	2,206,068.72	1,417,035.93	43,913.04	3,667,017.69
290 Other Current Employee Benefits	1,080.00			1,080.00
Total Personnel Services – Employee Benefits	\$4,558,170.60	\$2,989,505.87	\$97,924.43	\$7,645,600.90
300 <u>Purchased Professional and Technical Services</u>				
322 Professional Educational Services – lus	557,444.76	646,534.66	331,645.74	1,535,625.16
329 Professional Educational Services – Other	291,877.36	227,933.86		519,811.22
330 Other Professional Services	575,818.39	258,272.98	193,233.73	1,027,325.10
Total Purchased Professional and Technical Services	\$1,425,140.51	\$1,132,741.50	\$524,879.47	\$3,082,761.48
400 <u>Purchased Property Services</u>				
430 Repairs and Maintenance Services	150.00			150.00
Total Purchased Property Services	\$150.00			\$150.00
500 <u>Other Purchased Services</u>				
530 Communications	13.91			13.91
561 Tuition To Other School Districts Within the State	88.66	6,944.18		7,032.84
562 Tuition To Pennsylvania Charter Schools	305,124.43	621,689.07		926,813.50
567 Tuition To Approved Private Schools (APS) and PA Chartered Schools for the Deaf and Blind	803,116.12	412,058.80	404,863.32	1,620,038.24
568 Tuition To Private Residential Rehabilitative Institutions (PRRI) [In-State] and Detention Centers	65,853.96	907,466.27		973,320.23
569 Tuition – Other	22,691.20	17,828.80		40,520.00
580 Travel	1,338.60	3,380.78		4,719.38
594 IU Payment By Withholding for Institutionalized Children's Programs – Special Classes		11,790.56		11,790.56
Total Other Purchased Services	\$1,198,226.88	\$1,981,158.46	\$404,863.32	\$3,584,248.66
600 <u>Supplies</u>				
610 General Supplies	23,287.35	10,919.35	21.17	34,227.87
630 Food	93.89	574.35		668.24
640 Books and Periodicals	36,616.41	26,803.18		63,419.59
650 Supplies & Fees – Technology Related	7,293.68	8,281.90		15,575.58
Total Supplies	\$67,291.33	\$46,578.78	\$21.17	\$113,891.28
700 <u>Property</u>				
750 Equipment – Original and Additional	12,221.56	4,956.65		17,178.21
760 Equipment – Replacement	167.79	131.83		299.62
Total Property	\$12,389.35	\$5,088.48		\$17,477.83
800 <u>Other Objects</u>				

LEA : 123467303 Spring-Ford Area SD

Printed 9/27/2017 10:57:10 AM

General Fund (10)

1200 Special Programs – Elementary / Secondary	<u>Elementary</u>	<u>Secondary</u>	<u>Federal</u>	<u>Total</u>
800 <u>Other Objects</u>				
810 Dues and Fees	142.27	111.78		254.05
890 Miscellaneous Expenditures	300.00	900.00		1,200.00
Total Other Objects	\$442.27	\$1,011.78		\$1,454.05
Total 1200 Special Programs – Elementary / Secondary	\$14,103,995.47	\$10,731,706.17	\$1,338,215.62	\$26,173,917.26

LEA : 123467303 Spring-Ford Area SD

Printed 9/27/2017 10:57:10 AM

General Fund (10)				
1210 Life Skills Support				
	<u>Elementary</u>	<u>Secondary</u>	<u>Federal</u>	<u>Total</u>
100 <u>Personnel Services – Salaries</u>				
100 Personnel Services – Salaries		195,310.26	61,076.96	256,387.22
Total Personnel Services – Salaries		\$195,310.26	\$61,076.96	\$256,387.22
200 <u>Personnel Services – Employee Benefits</u>				
210 Group Insurance – Contracted Provider		319.60	37.60	357.20
220 Social Security Contributions		16,805.17	2,300.81	19,105.98
230 PSERS Retirement Contributions		59,871.96	5,991.12	65,863.08
250 Unemployment Compensation		168.27		168.27
260 Workers' Compensation		1,647.78		1,647.78
270 Group Insurance – Self-Insurance		75,554.83	15,108.64	90,663.47
Total Personnel Services – Employee Benefits		\$154,367.61	\$23,438.17	\$177,805.78
500 <u>Other Purchased Services</u>				
580 Travel		103.00		103.00
Total Other Purchased Services		\$103.00		\$103.00
600 <u>Supplies</u>				
610 General Supplies		629.69		629.69
640 Books and Periodicals		71.99		71.99
Total Supplies		\$701.68		\$701.68
Total 1210 Life Skills Support		\$350,482.55	\$84,515.13	\$434,997.68

LEA : 123467303 Spring-Ford Area SD

Printed 9/27/2017 10:57:10 AM

General Fund (10)

1220 Sensory Support	Elementary	Secondary	Federal	Total
100 <u>Personnel Services – Salaries</u>				
100 Personnel Services – Salaries	731,599.61	103,782.89	7,260.00	842,642.50
Total Personnel Services – Salaries	\$731,599.61	\$103,782.89	\$7,260.00	\$842,642.50
200 <u>Personnel Services – Employee Benefits</u>				
210 Group Insurance – Contracted Provider	502.90	112.80		615.70
220 Social Security Contributions	54,145.42	7,770.64	555.40	62,471.46
230 PSERS Retirement Contributions	189,207.76	26,171.61	937.99	216,317.36
250 Unemployment Compensation	482.82	70.21		553.03
260 Workers' Compensation	4,728.07	687.53		5,415.60
270 Group Insurance – Self-Insurance	148,119.95	19,429.78		167,549.73
Total Personnel Services – Employee Benefits	\$397,186.92	\$54,242.57	\$1,493.39	\$452,922.88
300 <u>Purchased Professional and Technical Services</u>				
329 Professional Educational Services – Other	315.00			315.00
330 Other Professional Services	81,691.99	685.14	225.32	82,602.45
Total Purchased Professional and Technical Services	\$82,006.99	\$685.14	\$225.32	\$82,917.45
500 <u>Other Purchased Services</u>				
580 Travel	355.40	279.24		634.64
Total Other Purchased Services	\$355.40	\$279.24		\$634.64
600 <u>Supplies</u>				
610 General Supplies	1,217.37	716.02		1,933.39
640 Books and Periodicals	632.23	468.43		1,100.66
Total Supplies	\$1,849.60	\$1,184.45		\$3,034.05
700 <u>Property</u>				
750 Equipment – Original and Additional	2,796.39			2,796.39
Total Property	\$2,796.39			\$2,796.39
Total 1220 Sensory Support	\$1,215,794.91	\$160,174.29	\$8,978.71	\$1,384,947.91

LEA : 123467303 Spring-Ford Area SD

Printed 9/27/2017 10:57:10 AM

General Fund (10)

1230 Emotional Support

	Elementary	Secondary	Federal	Total
100 <u>Personnel Services – Salaries</u>				
100 Personnel Services – Salaries	1,621,746.14	842,266.58	97,949.34	2,561,962.06
Total Personnel Services – Salaries	\$1,621,746.14	\$842,266.58	\$97,949.34	\$2,561,962.06
200 <u>Personnel Services – Employee Benefits</u>				
210 Group Insurance – Contracted Provider	2,608.50	1,118.60	37.60	3,764.70
220 Social Security Contributions	118,832.74	63,040.35	5,279.69	187,152.78
230 PSERS Retirement Contributions	421,063.92	225,744.51	12,655.05	659,463.48
250 Unemployment Compensation	1,079.97	601.44		1,681.41
260 Workers' Compensation	10,575.89	5,889.69		16,465.58
270 Group Insurance – Self-Insurance	669,442.18	280,106.48	15,958.32	965,506.98
Total Personnel Services – Employee Benefits	\$1,223,603.20	\$576,501.07	\$33,930.66	\$1,834,034.93
300 <u>Purchased Professional and Technical Services</u>				
322 Professional Educational Services – Ius	44,404.42	71,442.54		115,846.96
330 Other Professional Services	119,948.87	94,245.54	7,004.17	221,198.58
Total Purchased Professional and Technical Services	\$164,353.29	\$165,688.08	\$7,004.17	\$337,045.54
400 <u>Purchased Property Services</u>				
430 Repairs and Maintenance Services	150.00			150.00
Total Purchased Property Services	\$150.00			\$150.00
500 <u>Other Purchased Services</u>				
561 Tuition To Other School Districts Within the State		6,874.52		6,874.52
567 Tuition To Approved Private Schools (APS) and PA Chartered Schools for the Deaf and Blind	9,746.68	4,514.40		14,261.08
568 Tuition To Private Residential Rehabilitative Institutions (PRRI) [In-State] and Detention Centers	62,553.96	907,466.27		970,020.23
569 Tuition – Other	67.20	52.80		120.00
580 Travel	688.32	555.82		1,244.14
Total Other Purchased Services	\$73,056.16	\$919,463.81		\$992,519.97
600 <u>Supplies</u>				
610 General Supplies	6,042.35	1,176.95		7,219.30
630 Food	54.93			54.93
640 Books and Periodicals	1,116.74	1,315.81		2,432.55
650 Supplies & Fees – Technology Related	811.42	938.62		1,750.04
Total Supplies	\$8,025.44	\$3,431.38		\$11,456.82
700 <u>Property</u>				
750 Equipment – Original and Additional	382.92			382.92
Total Property	\$382.92			\$382.92
800 <u>Other Objects</u>				
890 Miscellaneous Expenditures	300.00			300.00
Total Other Objects	\$300.00			\$300.00
Total 1230 Emotional Support	\$3,091,617.15	\$2,507,350.92	\$138,884.17	\$5,737,852.24

LEA : 123467303 Spring-Ford Area SD

Printed 9/27/2017 10:57:10 AM

General Fund (10)

1240 Academic Support

	Elementary	Secondary	Federal	Total
100 <u>Personnel Services – Salaries</u>				
100 Personnel Services – Salaries	4,473,491.74	3,434,261.57	143,160.93	8,050,914.24
Total Personnel Services – Salaries	\$4,473,491.74	\$3,434,261.57	\$143,160.93	\$8,050,914.24
200 <u>Personnel Services – Employee Benefits</u>				
210 Group Insurance – Contracted Provider	5,317.94	3,590.80	37.60	8,946.34
220 Social Security Contributions	330,814.95	250,908.22	8,631.96	590,355.13
230 PSERS Retirement Contributions	1,173,824.19	883,361.62	17,324.42	2,074,510.23
250 Unemployment Compensation	3,006.44	2,277.97		5,284.41
260 Workers' Compensation	29,441.61	22,307.81		51,749.42
270 Group Insurance – Self-Insurance	1,384,862.86	1,041,944.84	12,846.08	2,439,653.78
290 Other Current Employee Benefits	1,080.00			1,080.00
Total Personnel Services – Employee Benefits	\$2,928,347.99	\$2,204,391.26	\$38,840.06	\$5,171,579.31
300 <u>Purchased Professional and Technical Services</u>				
322 Professional Educational Services – Ius		51,060.35		51,060.35
329 Professional Educational Services – Other	291,562.36	227,933.86		519,496.22
330 Other Professional Services	1,458.80	86,146.20	1,382.21	88,987.21
Total Purchased Professional and Technical Services	\$293,021.16	\$365,140.41	\$1,382.21	\$659,543.78
500 <u>Other Purchased Services</u>				
530 Communications	13.91			13.91
568 Tuition To Private Residential Rehabilitative Institutions (PRRI) [In-State] and Detention Centers	3,300.00			3,300.00
569 Tuition – Other	22,624.00	17,776.00		40,400.00
580 Travel	294.88	2,442.72		2,737.60
Total Other Purchased Services	\$26,232.79	\$20,218.72		\$46,451.51
600 <u>Supplies</u>				
610 General Supplies	13,608.88	7,480.95	21.17	21,111.00
630 Food	38.96	574.35		613.31
640 Books and Periodicals	33,949.89	24,226.01		58,175.90
650 Supplies & Fees – Technology Related	3,650.43	4,219.74		7,870.17
Total Supplies	\$51,248.16	\$36,501.05	\$21.17	\$87,770.38
800 <u>Other Objects</u>				
890 Miscellaneous Expenditures		900.00		900.00
Total Other Objects		\$900.00		\$900.00
Total 1240 Academic Support	\$7,772,341.84	\$6,061,413.01	\$183,404.37	\$14,017,159.22

LEA : 123467303 Spring-Ford Area SD

Printed 9/27/2017 10:57:10 AM

General Fund (10)

1241 Learning Support – Public	Elementary	Secondary	Federal	Total
100 <u>Personnel Services – Salaries</u>				
100 Personnel Services – Salaries	4,104,561.86	3,102,679.57	143,160.93	7,350,402.36
Total Personnel Services – Salaries	\$4,104,561.86	\$3,102,679.57	\$143,160.93	\$7,350,402.36
200 <u>Personnel Services – Employee Benefits</u>				
210 Group Insurance – Contracted Provider	5,061.90	3,360.50	37.60	8,460.00
220 Social Security Contributions	303,761.45	226,055.85	8,631.96	538,449.26
230 PSERS Retirement Contributions	1,078,492.64	797,676.28	17,324.42	1,893,493.34
250 Unemployment Compensation	2,764.32	2,060.36		4,824.68
260 Workers' Compensation	27,070.52	20,176.76		47,247.28
270 Group Insurance – Self-Insurance	1,298,003.31	977,408.09	12,846.08	2,288,257.48
290 Other Current Employee Benefits	1,080.00			1,080.00
Total Personnel Services – Employee Benefits	\$2,716,234.14	\$2,026,737.84	\$38,840.06	\$4,781,812.04
300 <u>Purchased Professional and Technical Services</u>				
322 Professional Educational Services – Ius		51,060.35		51,060.35
329 Professional Educational Services – Other	291,562.36	227,933.86		519,496.22
330 Other Professional Services	1,458.80	86,146.20	1,382.21	88,987.21
Total Purchased Professional and Technical Services	\$293,021.16	\$365,140.41	\$1,382.21	\$659,543.78
500 <u>Other Purchased Services</u>				
530 Communications	13.91			13.91
568 Tuition To Private Residential Rehabilitative Institutions (PRRI) [In-State] and Detention Centers	3,300.00			3,300.00
569 Tuition – Other	22,624.00	17,776.00		40,400.00
580 Travel	141.61	2,442.72		2,584.33
Total Other Purchased Services	\$26,079.52	\$20,218.72		\$46,298.24
600 <u>Supplies</u>				
610 General Supplies	13,354.78	7,465.58	21.17	20,841.53
630 Food	38.96	574.35		613.31
640 Books and Periodicals	33,322.60	23,840.00		57,162.60
650 Supplies & Fees – Technology Related	3,531.60	4,219.74		7,751.34
Total Supplies	\$50,247.94	\$36,099.67	\$21.17	\$86,368.78
Total 1241 Learning Support – Public	\$7,190,144.62	\$5,550,876.21	\$183,404.37	\$12,924,425.20

LEA : 123467303 Spring-Ford Area SD

Printed 9/27/2017 10:57:10 AM

General Fund (10)				
1243 Gifted Support	<u>Elementary</u>	<u>Secondary</u>	<u>Federal</u>	<u>Total</u>
100 <u>Personnel Services – Salaries</u>				
100 Personnel Services – Salaries	368,929.88	331,582.00		700,511.88
Total Personnel Services – Salaries	\$368,929.88	\$331,582.00		\$700,511.88
200 <u>Personnel Services – Employee Benefits</u>				
210 Group Insurance – Contracted Provider	256.04	230.30		486.34
220 Social Security Contributions	27,053.50	24,852.37		51,905.87
230 PSERS Retirement Contributions	95,331.55	85,685.34		181,016.89
250 Unemployment Compensation	242.12	217.61		459.73
260 Workers' Compensation	2,371.09	2,131.05		4,502.14
270 Group Insurance – Self-Insurance	86,859.55	64,536.75		151,396.30
Total Personnel Services – Employee Benefits	\$212,113.85	\$177,653.42		\$389,767.27
500 <u>Other Purchased Services</u>				
580 Travel	153.27			153.27
Total Other Purchased Services	\$153.27			\$153.27
600 <u>Supplies</u>				
610 General Supplies	254.10	15.37		269.47
640 Books and Periodicals	627.29	386.01		1,013.30
650 Supplies & Fees – Technology Related	118.83			118.83
Total Supplies	\$1,000.22	\$401.38		\$1,401.60
800 <u>Other Objects</u>				
890 Miscellaneous Expenditures		900.00		900.00
Total Other Objects		\$900.00		\$900.00
Total 1243 Gifted Support	\$582,197.22	\$510,536.80		\$1,092,734.02

LEA : 123467303 Spring-Ford Area SD

Printed 9/27/2017 10:57:10 AM

General Fund (10)				
1270 Multi-Handicapped Support	<u>Elementary</u>	<u>Secondary</u>	<u>Federal</u>	<u>Total</u>
100 <u>Personnel Services – Salaries</u>				
100 Personnel Services – Salaries	15,347.04		1,080.00	16,427.04
Total Personnel Services – Salaries	\$15,347.04		\$1,080.00	\$16,427.04
200 <u>Personnel Services – Employee Benefits</u>				
210 Group Insurance – Contracted Provider	18.80			18.80
220 Social Security Contributions	1,151.80		82.62	1,234.42
230 PSERS Retirement Contributions	4,105.17		139.53	4,244.70
250 Unemployment Compensation	10.47	0.31		10.78
260 Workers' Compensation	102.52	3.05		105.57
270 Group Insurance – Self-Insurance	3,643.73			3,643.73
Total Personnel Services – Employee Benefits	\$9,032.49	\$3.36	\$222.15	\$9,258.00
300 <u>Purchased Professional and Technical Services</u>				
322 Professional Educational Services – Ius	2,435.65	191,464.09		193,899.74
330 Other Professional Services	316,159.67	32,756.83	184,622.03	533,538.53
Total Purchased Professional and Technical Services	\$318,595.32	\$224,220.92	\$184,622.03	\$727,438.27
500 <u>Other Purchased Services</u>				
567 Tuition To Approved Private Schools (APS) and PA Chartered Schools for the Deaf and Blind			40,823.60	40,823.60
Total Other Purchased Services			\$40,823.60	\$40,823.60
600 <u>Supplies</u>				
610 General Supplies	1,326.32	307.37		1,633.69
640 Books and Periodicals	917.55	720.94		1,638.49
650 Supplies & Fees – Technology Related	175.58	65.39		240.97
Total Supplies	\$2,419.45	\$1,093.70		\$3,513.15
700 <u>Property</u>				
750 Equipment – Original and Additional	6,063.71	2,782.58		8,846.29
Total Property	\$6,063.71	\$2,782.58		\$8,846.29
Total 1270 Multi-Handicapped Support	\$351,458.01	\$228,100.56	\$226,747.78	\$806,306.35

LEA : 123467303 Spring-Ford Area SD

Printed 9/27/2017 10:57:10 AM

General Fund (10)

1280 Early Intervention Support

300 Purchased Professional and Technical Services

	<u>Elementary</u>	<u>Secondary</u>	<u>Federal</u>	<u>Total</u>
322 Professional Educational Services – lus	79,712.28		6,189.00	85,901.28
Total Purchased Professional and Technical Services	\$79,712.28		\$6,189.00	\$85,901.28
Total 1280 Early Intervention Support	\$79,712.28		\$6,189.00	\$85,901.28

LEA : 123467303 Spring-Ford Area SD

Printed 9/27/2017 10:57:10 AM

General Fund (10)				
1290 Special Programs - Other Support	<u>Elementary</u>	<u>Secondary</u>	<u>Federal</u>	<u>Total</u>
300 <u>Purchased Professional and Technical Services</u>				
322 Professional Educational Services – Ius	430,892.41	332,567.68	325,456.74	1,088,916.83
330 Other Professional Services	56,559.06	44,439.27		100,998.33
Total Purchased Professional and Technical Services	\$487,451.47	\$377,006.95	\$325,456.74	\$1,189,915.16
500 <u>Other Purchased Services</u>				
561 Tuition To Other School Districts Within the State	88.66	69.66		158.32
562 Tuition To Pennsylvania Charter Schools	305,124.43	621,689.07		926,813.50
567 Tuition To Approved Private Schools (APS) and PA Chartered Schools for the Deaf and Blind	793,369.44	407,544.40	364,039.72	1,564,953.56
594 IU Payment By Withholding for Institutionalized Children’s Programs – Special Classes		11,790.56		11,790.56
Total Other Purchased Services	\$1,098,582.53	\$1,041,093.69	\$364,039.72	\$2,503,715.94
600 <u>Supplies</u>				
610 General Supplies	1,092.43	608.37		1,700.80
650 Supplies & Fees – Technology Related	2,656.25	3,058.15		5,714.40
Total Supplies	\$3,748.68	\$3,666.52		\$7,415.20
700 <u>Property</u>				
750 Equipment – Original and Additional	2,978.54	2,174.07		5,152.61
760 Equipment – Replacement	167.79	131.83		299.62
Total Property	\$3,146.33	\$2,305.90		\$5,452.23
800 <u>Other Objects</u>				
810 Dues and Fees	142.27	111.78		254.05
Total Other Objects	\$142.27	\$111.78		\$254.05
Total 1290 Special Programs - Other Support	\$1,593,071.28	\$1,424,184.84	\$689,496.46	\$3,706,752.58

LEA : 123467303 Spring-Ford Area SD

Printed 9/27/2017 10:57:10 AM

General Fund (10)

1300 Vocational Education

	<u>Elementary</u>	<u>Secondary</u>	<u>Federal</u>	<u>Total</u>
500 <u>Other Purchased Services</u>				
564 Tuition To Career and Technology Centers		2,659,011.85		2,659,011.85
Total Other Purchased Services		\$2,659,011.85		\$2,659,011.85
Total 1300 Vocational Education		\$2,659,011.85		\$2,659,011.85

LEA : 123467303 Spring-Ford Area SD

Printed 9/27/2017 10:57:10 AM

General Fund (10)				
1400 Other Instructional Programs – Elementary / Secondary	<u>Elementary</u>	<u>Secondary</u>	<u>Federal</u>	<u>Total</u>
100 <u>Personnel Services – Salaries</u>				
100 Personnel Services – Salaries	4,852.50	17,692.50		22,545.00
Total Personnel Services – Salaries	\$4,852.50	\$17,692.50		\$22,545.00
200 <u>Personnel Services – Employee Benefits</u>				
220 Social Security Contributions	369.95	1,311.04		1,680.99
230 PSERS Retirement Contributions	1,176.36	4,571.73		5,748.09
250 Unemployment Compensation	3.18	11.61		14.79
260 Workers' Compensation	31.20	113.71		144.91
Total Personnel Services – Employee Benefits	\$1,580.69	\$6,008.09		\$7,588.78
300 <u>Purchased Professional and Technical Services</u>				
322 Professional Educational Services – Ius	11,135.60	8,749.40		19,885.00
329 Professional Educational Services – Other		1,736.00		1,736.00
Total Purchased Professional and Technical Services	\$11,135.60	\$10,485.40		\$21,621.00
500 <u>Other Purchased Services</u>				
561 Tuition To Other School Districts Within the State		3,791.85		3,791.85
Total Other Purchased Services		\$3,791.85		\$3,791.85
600 <u>Supplies</u>				
650 Supplies & Fees – Technology Related		399.00		399.00
Total Supplies		\$399.00		\$399.00
Total 1400 Other Instructional Programs – Elementary / Secondary	\$17,568.79	\$38,376.84		\$55,945.63

LEA : 123467303 Spring-Ford Area SD

Printed 9/27/2017 10:57:10 AM

General Fund (10)

1420 Summer School	<u>Elementary</u>	<u>Secondary</u>	<u>Federal</u>	<u>Total</u>
100 <u>Personnel Services – Salaries</u>				
100 Personnel Services – Salaries	2,940.00	3,450.00		6,390.00
Total Personnel Services – Salaries	\$2,940.00	\$3,450.00		\$6,390.00
200 <u>Personnel Services – Employee Benefits</u>				
220 Social Security Contributions	224.91	263.93		488.84
230 PSERS Retirement Contributions	682.17	891.49		1,573.66
250 Unemployment Compensation	1.93	2.26		4.19
260 Workers' Compensation	18.90	22.17		41.07
Total Personnel Services – Employee Benefits	\$927.91	\$1,179.85		\$2,107.76
Total 1420 Summer School	\$3,867.91	\$4,629.85		\$8,497.76

LEA : 123467303 Spring-Ford Area SD

Printed 9/27/2017 10:57:10 AM

General Fund (10)				
1430 Homebound Instruction	<u>Elementary</u>	<u>Secondary</u>	<u>Federal</u>	<u>Total</u>
100 <u>Personnel Services – Salaries</u>				
100 Personnel Services – Salaries	1,912.50	14,242.50		16,155.00
Total Personnel Services – Salaries	\$1,912.50	\$14,242.50		\$16,155.00
200 <u>Personnel Services – Employee Benefits</u>				
220 Social Security Contributions	145.04	1,047.11		1,192.15
230 PSERS Retirement Contributions	494.19	3,680.24		4,174.43
250 Unemployment Compensation	1.25	9.35		10.60
260 Workers' Compensation	12.30	91.54		103.84
Total Personnel Services – Employee Benefits	\$652.78	\$4,828.24		\$5,481.02
300 <u>Purchased Professional and Technical Services</u>				
329 Professional Educational Services – Other		1,736.00		1,736.00
Total Purchased Professional and Technical Services		\$1,736.00		\$1,736.00
600 <u>Supplies</u>				
650 Supplies & Fees – Technology Related		399.00		399.00
Total Supplies		\$399.00		\$399.00
Total 1430 Homebound Instruction	\$2,565.28	\$21,205.74		\$23,771.02

LEA : 123467303 Spring-Ford Area SD

Printed 9/27/2017 10:57:10 AM

General Fund (10)

1440 Alternative Regular Education Programs	<u>Elementary</u>	<u>Secondary</u>	<u>Federal</u>	<u>Total</u>
300 <u>Purchased Professional and Technical Services</u>				
322 Professional Educational Services – lus	11,135.60	8,749.40		19,885.00
Total Purchased Professional and Technical Services	\$11,135.60	\$8,749.40		\$19,885.00
500 <u>Other Purchased Services</u>				
561 Tuition To Other School Districts Within the State		3,791.85		3,791.85
Total Other Purchased Services		\$3,791.85		\$3,791.85
Total 1440 Alternative Regular Education Programs	\$11,135.60	\$12,541.25		\$23,676.85

LEA : 123467303 Spring-Ford Area SD

Printed 9/27/2017 10:57:10 AM

General Fund (10)

1441 Adjudicated / Court-Placed Programs

<u>Elementary</u>	<u>Secondary</u>	<u>Federal</u>	<u>Total</u>
-------------------	------------------	----------------	--------------

500 Other Purchased Services

561 Tuition To Other School Districts Within the State	3,791.85		3,791.85
--	----------	--	----------

Total Other Purchased Services	\$3,791.85		\$3,791.85
---------------------------------------	-------------------	--	-------------------

Total 1441 Adjudicated / Court-Placed Programs	\$3,791.85		\$3,791.85
---	-------------------	--	-------------------

LEA : 123467303 Spring-Ford Area SD

Printed 9/27/2017 10:57:10 AM

General Fund (10)

1442 Alternative Education Programs	<u>Elementary</u>	<u>Secondary</u>	<u>Federal</u>	<u>Total</u>
300 <u>Purchased Professional and Technical Services</u>				
322 Professional Educational Services – lus	11,135.60	8,749.40		19,885.00
Total Purchased Professional and Technical Services	\$11,135.60	\$8,749.40		\$19,885.00
Total 1442 Alternative Education Programs	\$11,135.60	\$8,749.40		\$19,885.00

LEA : 123467303 Spring-Ford Area SD

Printed 9/27/2017 10:57:10 AM

General Fund (10)

1500 Nonpublic School Programs

	<u>Elementary</u>	<u>Secondary</u>	<u>Federal</u>	<u>Total</u>
300 <u>Purchased Professional and Technical Services</u>				
322 Professional Educational Services – lus			1,564.10	1,564.10
Total Purchased Professional and Technical Services			\$1,564.10	\$1,564.10
Total 1500 Nonpublic School Programs			\$1,564.10	\$1,564.10

LEA : 123467303 Spring-Ford Area SD

Printed 9/27/2017 10:57:12 AM

General Fund (10)

2000 Support Services		Total
100 <u>Personnel Services – Salaries</u>		
100 Personnel Services – Salaries		15,000,912.73
Total Personnel Services – Salaries		\$15,000,912.73
200 <u>Personnel Services – Employee Benefits</u>		
210 Group Insurance – Contracted Provider		20,712.82
220 Social Security Contributions		1,095,814.54
230 PSERS Retirement Contributions		3,821,534.79
240 Tuition Reimbursement		179,769.12
250 Unemployment Compensation		9,855.39
260 Workers' Compensation		96,511.73
270 Group Insurance – Self-Insurance		3,456,316.36
290 Other Current Employee Benefits		85,816.68
Total Personnel Services – Employee Benefits		\$8,766,331.43
300 <u>Purchased Professional and Technical Services</u>		
322 Professional Educational Services – Ius		65,043.41
324 Professional Educational Services – Employee Training and Development Services		19,598.19
329 Professional Educational Services – Other		328,678.24
330 Other Professional Services		1,425,824.83
340 Technical Services		197,877.84
350 Security / Safety Services		31,347.80
390 Other Purchased Professional and Technical Services		3,678.24
Total Purchased Professional and Technical Services		\$2,072,048.55
400 <u>Purchased Property Services</u>		
410 Cleaning Services		1,754,336.74
420 Utility Services		1,421,571.15
430 Repairs and Maintenance Services		844,572.81
440 Rentals		976,028.28
450 Construction Services		1,600.00
460 Extermination Services		6,856.64
490 Other Purchased Property Services		96.00
Total Purchased Property Services		\$5,005,061.62
500 <u>Other Purchased Services</u>		
511 Student Transportation Services from Another LEA Within the State		267.92
513 Contracted Carriers		6,442,480.55
516 Student Transportation Services From the IU		344,751.30
520 Insurance – General		112,599.00
521 Fire Insurance		56,594.00
522 Automotive Liability Insurance		53,771.00
523 General Property and Liability Insurance		190,806.00
530 Communications		185,743.18
549 Other Advertising/Public Relations		11,414.31
550 Printing and Binding		26,524.07
580 Travel		42,107.70
595 IU Payments By Withholding		122,807.03

LEA : 123467303 Spring-Ford Area SD

Printed 9/27/2017 10:57:12 AM

General Fund (10)

2000 Support Services

Total

500 <u>Other Purchased Services</u>	
596 Direct Payments To Intermediate Units	8,677.00
Total Other Purchased Services	\$7,598,543.06
600 <u>Supplies</u>	
610 General Supplies	1,137,526.51
620 Energy	240,700.05
630 Food	12,894.56
640 Books and Periodicals	196,622.87
650 Supplies & Fees – Technology Related	220,599.30
Total Supplies	\$1,808,343.29
700 <u>Property</u>	
750 Equipment – Original and Additional	205,804.24
760 Equipment – Replacement	80,511.71
Total Property	\$286,315.95
800 <u>Other Objects</u>	
810 Dues and Fees	75,038.73
820 Claims and Judgments Against the LEA	53,445.75
890 Miscellaneous Expenditures	35.00
Total Other Objects	\$128,519.48
Total 2000 Support Services	\$40,666,076.11

LEA : 123467303 Spring-Ford Area SD

Printed 9/27/2017 10:57:12 AM

General Fund (10)

2100 Support Services – Students	Elementary	Secondary	Federal	Total
100 <u>Personnel Services – Salaries</u>				
100 Personnel Services – Salaries	1,293,950.22	1,456,737.18		2,920,860.82
Total Personnel Services – Salaries	\$1,293,950.22	\$1,456,737.18		\$2,920,860.82
200 <u>Personnel Services – Employee Benefits</u>				
210 Group Insurance – Contracted Provider	1,040.96	1,388.28		2,598.44
220 Social Security Contributions	95,562.35	106,363.95		214,398.08
230 PSERS Retirement Contributions	331,937.81	373,936.83		749,194.43
250 Unemployment Compensation	849.21	956.04		1,916.94
260 Workers' Compensation	8,316.14	9,362.37		18,772.21
270 Group Insurance – Self-Insurance	249,742.80	365,565.02		668,529.92
290 Other Current Employee Benefits	1,644.50			1,644.50
Total Personnel Services – Employee Benefits	\$689,093.77	\$857,572.49		\$1,657,054.52
300 <u>Purchased Professional and Technical Services</u>				
324 Professional Educational Services – Employee Training and Development Services	790.00			855.00
329 Professional Educational Services – Other	2,400.00			2,400.00
330 Other Professional Services	68,180.00	51,270.00		119,450.00
Total Purchased Professional and Technical Services	\$71,370.00	\$51,270.00		\$122,705.00
500 <u>Other Purchased Services</u>				
530 Communications		49.00		2,579.79
580 Travel	94.87	74.54		718.19
Total Other Purchased Services	\$94.87	\$123.54		\$3,297.98
600 <u>Supplies</u>				
610 General Supplies	112,926.49	24,484.68		137,417.16
640 Books and Periodicals	2,838.86	79.09		2,917.95
650 Supplies & Fees – Technology Related	647.55	5,769.71		6,417.26
Total Supplies	\$116,412.90	\$30,333.48		\$146,752.37
700 <u>Property</u>				
750 Equipment – Original and Additional	793.75			793.75
Total Property	\$793.75			\$793.75
800 <u>Other Objects</u>				
810 Dues and Fees	70.00	630.00		700.00
Total Other Objects	\$70.00	\$630.00		\$700.00
Total 2100 Support Services – Students	\$2,171,785.51	\$2,396,666.69		\$4,852,164.44

LEA : 123467303 Spring-Ford Area SD

Printed 9/27/2017 10:57:12 AM

General Fund (10)

2120 Guidance Services	Elementary	Secondary	Federal	Total
100 <u>Personnel Services – Salaries</u>				
100 Personnel Services – Salaries	919,704.19	1,162,686.72		2,082,390.91
Total Personnel Services – Salaries	\$919,704.19	\$1,162,686.72		\$2,082,390.91
200 <u>Personnel Services – Employee Benefits</u>				
210 Group Insurance – Contracted Provider	756.70	1,164.94		1,921.64
220 Social Security Contributions	67,893.65	84,624.25		152,517.90
230 PSERS Retirement Contributions	236,101.10	298,636.55		534,737.65
250 Unemployment Compensation	603.59	763.06		1,366.65
260 Workers' Compensation	5,910.88	7,472.53		13,383.41
270 Group Insurance – Self-Insurance	178,878.08	309,885.61		488,763.69
290 Other Current Employee Benefits	1,644.50			1,644.50
Total Personnel Services – Employee Benefits	\$491,788.50	\$702,546.94		\$1,194,335.44
300 <u>Purchased Professional and Technical Services</u>				
329 Professional Educational Services – Other	2,400.00			2,400.00
Total Purchased Professional and Technical Services	\$2,400.00			\$2,400.00
500 <u>Other Purchased Services</u>				
530 Communications		49.00		49.00
Total Other Purchased Services		\$49.00		\$49.00
600 <u>Supplies</u>				
610 General Supplies	3,121.14	21.66		3,142.80
640 Books and Periodicals	2,738.19			2,738.19
650 Supplies & Fees – Technology Related	457.00	5,620.00		6,077.00
Total Supplies	\$6,316.33	\$5,641.66		\$11,957.99
700 <u>Property</u>				
750 Equipment – Original and Additional	793.75			793.75
Total Property	\$793.75			\$793.75
800 <u>Other Objects</u>				
810 Dues and Fees	70.00	630.00		700.00
Total Other Objects	\$70.00	\$630.00		\$700.00
Total 2120 Guidance Services	\$1,421,072.77	\$1,871,554.32		\$3,292,627.09

LEA : 123467303 Spring-Ford Area SD

Printed 9/27/2017 10:57:12 AM

General Fund (10)

2140 Psychological Services	Elementary	Secondary	Federal	Total
100 <u>Personnel Services – Salaries</u>				
100 Personnel Services – Salaries	374,246.03	294,050.46		668,296.49
Total Personnel Services – Salaries	\$374,246.03	\$294,050.46		\$668,296.49
200 <u>Personnel Services – Employee Benefits</u>				
210 Group Insurance – Contracted Provider	284.26	223.34		507.60
220 Social Security Contributions	27,668.70	21,739.70		49,408.40
230 PSERS Retirement Contributions	95,836.71	75,300.28		171,136.99
250 Unemployment Compensation	245.62	192.98		438.60
260 Workers' Compensation	2,405.26	1,889.84		4,295.10
270 Group Insurance – Self-Insurance	70,864.72	55,679.41		126,544.13
Total Personnel Services – Employee Benefits	\$197,305.27	\$155,025.55		\$352,330.82
300 <u>Purchased Professional and Technical Services</u>				
324 Professional Educational Services – Employee Training and Development Services	790.00			790.00
330 Other Professional Services	68,180.00	51,270.00		119,450.00
Total Purchased Professional and Technical Services	\$68,970.00	\$51,270.00		\$120,240.00
500 <u>Other Purchased Services</u>				
580 Travel	94.87	74.54		169.41
Total Other Purchased Services	\$94.87	\$74.54		\$169.41
600 <u>Supplies</u>				
610 General Supplies	109,805.35	24,463.02		134,268.37
640 Books and Periodicals	100.67	79.09		179.76
650 Supplies & Fees – Technology Related	190.55	149.71		340.26
Total Supplies	\$110,096.57	\$24,691.82		\$134,788.39
Total 2140 Psychological Services	\$750,712.74	\$525,112.37		\$1,275,825.11

LEA : 123467303 Spring-Ford Area SD

Printed 9/27/2017 10:57:12 AM

General Fund (10)

2160 Social Work Services

	<u>Elementary</u>	<u>Secondary</u>	<u>Federal</u>	<u>Total</u>
100 <u>Personnel Services – Salaries</u>				
100 Personnel Services – Salaries				90,900.00
Total Personnel Services – Salaries				\$90,900.00
200 <u>Personnel Services – Employee Benefits</u>				
210 Group Insurance – Contracted Provider				56.40
220 Social Security Contributions				6,850.71
230 PSERS Retirement Contributions				23,488.62
250 Unemployment Compensation				59.66
260 Workers' Compensation				584.21
270 Group Insurance – Self-Insurance				16,745.31
Total Personnel Services – Employee Benefits				\$47,784.91
300 <u>Purchased Professional and Technical Services</u>				
324 Professional Educational Services – Employee Training and Development Services				65.00
Total Purchased Professional and Technical Services				\$65.00
500 <u>Other Purchased Services</u>				
530 Communications				407.79
580 Travel				548.78
Total Other Purchased Services				\$956.57
600 <u>Supplies</u>				
610 General Supplies				5.99
Total Supplies				\$5.99
Total 2160 Social Work Services				\$139,712.47

LEA : 123467303 Spring-Ford Area SD

Printed 9/27/2017 10:57:12 AM

General Fund (10)

2170 Student Accounting Services

Elementary Secondary Federal Total

100 <u>Personnel Services – Salaries</u>				
100 Personnel Services – Salaries				79,273.42
Total Personnel Services – Salaries				\$79,273.42
200 <u>Personnel Services – Employee Benefits</u>				
210 Group Insurance – Contracted Provider				112.80
220 Social Security Contributions				5,621.07
230 PSERS Retirement Contributions				19,831.17
250 Unemployment Compensation				52.03
260 Workers' Compensation				509.49
270 Group Insurance – Self-Insurance				36,476.79
Total Personnel Services – Employee Benefits				\$62,603.35
500 <u>Other Purchased Services</u>				
530 Communications				2,123.00
Total Other Purchased Services				\$2,123.00
Total 2170 Student Accounting Services				\$143,999.77

LEA : 123467303 Spring-Ford Area SD

Printed 9/27/2017 10:57:12 AM

General Fund (10)

2200 Support Services – Instructional Staff

	Elementary	Secondary	Federal	Total
100 <u>Personnel Services – Salaries</u>				
100 Personnel Services – Salaries	1,759,524.96	953,562.03		2,713,086.99
Total Personnel Services – Salaries	\$1,759,524.96	\$953,562.03		\$2,713,086.99
200 <u>Personnel Services – Employee Benefits</u>				
210 Group Insurance – Contracted Provider	1,851.30	1,094.03		2,945.33
220 Social Security Contributions	129,888.58	70,501.79		200,390.37
230 PSERS Retirement Contributions	450,273.42	243,994.00		694,267.42
240 Tuition Reimbursement	45,481.00	54,970.12		100,451.12
250 Unemployment Compensation	1,203.30	577.29		1,780.59
260 Workers' Compensation	11,783.66	5,653.19		17,436.85
270 Group Insurance – Self-Insurance	346,375.13	150,630.82		497,005.95
Total Personnel Services – Employee Benefits	\$986,856.39	\$527,421.24		\$1,514,277.63
300 <u>Purchased Professional and Technical Services</u>				
322 Professional Educational Services – Ius	4,267.20	9,177.80		13,445.00
324 Professional Educational Services – Employee Training and Development Services	4,896.17	3,771.40		8,667.57
329 Professional Educational Services – Other	124,257.46	97,500.56		221,758.02
330 Other Professional Services	775.60	609.40		1,385.00
Total Purchased Professional and Technical Services	\$134,196.43	\$111,059.16		\$245,255.59
400 <u>Purchased Property Services</u>				
430 Repairs and Maintenance Services	6,681.15	3,817.80		10,498.95
440 Rentals		8,151.98		8,151.98
Total Purchased Property Services	\$6,681.15	\$11,969.78		\$18,650.93
500 <u>Other Purchased Services</u>				
530 Communications	5,029.06	3,951.42		8,980.48
550 Printing and Binding	243.04	190.96		434.00
580 Travel	5,292.63	6,683.24		11,975.87
Total Other Purchased Services	\$10,564.73	\$10,825.62		\$21,390.35
600 <u>Supplies</u>				
610 General Supplies	18,467.54	11,680.17		30,147.71
630 Food	1,030.70	809.83		1,840.53
640 Books and Periodicals	69,713.32	47,966.92		117,680.24
650 Supplies & Fees – Technology Related	25,507.04	26,662.29		52,169.33
Total Supplies	\$114,718.60	\$87,119.21		\$201,837.81
700 <u>Property</u>				
750 Equipment – Original and Additional	7,739.20	5,071.17		12,810.37
Total Property	\$7,739.20	\$5,071.17		\$12,810.37
800 <u>Other Objects</u>				
810 Dues and Fees	2,286.54	2,091.56		4,378.10
Total Other Objects	\$2,286.54	\$2,091.56		\$4,378.10
Total 2200 Support Services – Instructional Staff	\$3,022,568.00	\$1,709,119.77		\$4,731,687.77

LEA : 123467303 Spring-Ford Area SD

Printed 9/27/2017 10:57:12 AM

General Fund (10)

2220 Technology Support Services

	<u>Elementary</u>	<u>Secondary</u>	<u>Federal</u>	<u>Total</u>
600 <u>Supplies</u>				
610 General Supplies	3,745.95	2,813.60		6,559.55
640 Books and Periodicals	220.37			220.37
650 Supplies & Fees – Technology Related	1,232.85	1,199.66		2,432.51
Total Supplies	\$5,199.17	\$4,013.26		\$9,212.43
Total 2220 Technology Support Services	\$5,199.17	\$4,013.26		\$9,212.43

LEA : 123467303 Spring-Ford Area SD

Printed 9/27/2017 10:57:12 AM

General Fund (10)				
2250 School Library Services				
	<u>Elementary</u>	<u>Secondary</u>	<u>Federal</u>	<u>Total</u>
100 <u>Personnel Services – Salaries</u>				
100 Personnel Services – Salaries	703,008.46	436,620.00		1,139,628.46
Total Personnel Services – Salaries	\$703,008.46	\$436,620.00		\$1,139,628.46
200 <u>Personnel Services – Employee Benefits</u>				
210 Group Insurance – Contracted Provider	507.60	282.00		789.60
220 Social Security Contributions	51,925.66	32,200.60		84,126.26
230 PSERS Retirement Contributions	180,881.88	113,254.21		294,136.09
250 Unemployment Compensation	461.39	286.55		747.94
260 Workers' Compensation	4,518.19	2,806.13		7,324.32
270 Group Insurance – Self-Insurance	150,966.71	62,443.62		213,410.33
Total Personnel Services – Employee Benefits	\$389,261.43	\$211,273.11		\$600,534.54
300 <u>Purchased Professional and Technical Services</u>				
329 Professional Educational Services – Other	9,385.29	7,243.86		16,629.15
Total Purchased Professional and Technical Services	\$9,385.29	\$7,243.86		\$16,629.15
400 <u>Purchased Property Services</u>				
430 Repairs and Maintenance Services	6,681.15	3,817.80		10,498.95
440 Rentals		8,151.98		8,151.98
Total Purchased Property Services	\$6,681.15	\$11,969.78		\$18,650.93
600 <u>Supplies</u>				
610 General Supplies	3,076.18	246.97		3,323.15
640 Books and Periodicals	29,656.57	23,149.06		52,805.63
650 Supplies & Fees – Technology Related	1,343.10	8,198.71		9,541.81
Total Supplies	\$34,075.85	\$31,594.74		\$65,670.59
800 <u>Other Objects</u>				
810 Dues and Fees		295.00		295.00
Total Other Objects		\$295.00		\$295.00
Total 2250 School Library Services	\$1,142,412.18	\$698,996.49		\$1,841,408.67

LEA : 123467303 Spring-Ford Area SD

Printed 9/27/2017 10:57:12 AM

General Fund (10)

2260 Instruction and Curriculum Development Services	Elementary	Secondary	Federal	Total
100 Personnel Services – Salaries				
100 Personnel Services – Salaries	559,736.91	439,793.31		999,530.22
Total Personnel Services – Salaries	\$559,736.91	\$439,793.31		\$999,530.22
200 Personnel Services – Employee Benefits				
210 Group Insurance – Contracted Provider	954.54	749.99		1,704.53
220 Social Security Contributions	41,733.98	32,790.96		74,524.94
230 PSERS Retirement Contributions	141,458.03	111,145.59		252,603.62
250 Unemployment Compensation	367.34	288.64		655.98
260 Workers' Compensation	3,597.40	2,826.52		6,423.92
270 Group Insurance – Self-Insurance	96,448.56	75,781.03		172,229.59
Total Personnel Services – Employee Benefits	\$284,559.85	\$223,582.73		\$508,142.58
300 Purchased Professional and Technical Services				
322 Professional Educational Services – Ius	4,267.20	9,177.80		13,445.00
324 Professional Educational Services – Employee Training and Development Services	1,709.80	1,300.20		3,010.00
329 Professional Educational Services – Other	60,423.65	47,475.73		107,899.38
Total Purchased Professional and Technical Services	\$66,400.65	\$57,953.73		\$124,354.38
500 Other Purchased Services				
530 Communications	5,029.06	3,951.42		8,980.48
550 Printing and Binding	243.04	190.96		434.00
580 Travel	2,448.66	1,923.95		4,372.61
Total Other Purchased Services	\$7,720.76	\$6,066.33		\$13,787.09
600 Supplies				
610 General Supplies	11,633.92	8,610.57		20,244.49
630 Food	106.04	83.31		189.35
640 Books and Periodicals	39,201.75	24,319.23		63,520.98
650 Supplies & Fees – Technology Related	22,931.09	17,263.92		40,195.01
Total Supplies	\$73,872.80	\$50,277.03		\$124,149.83
700 Property				
750 Equipment – Original and Additional	3,229.16	1,527.57		4,756.73
Total Property	\$3,229.16	\$1,527.57		\$4,756.73
800 Other Objects				
810 Dues and Fees	606.54	476.56		1,083.10
Total Other Objects	\$606.54	\$476.56		\$1,083.10
Total 2260 Instruction and Curriculum Development Services	\$996,126.67	\$779,677.26		\$1,775,803.93

LEA : 123467303 Spring-Ford Area SD

Printed 9/27/2017 10:57:12 AM

General Fund (10)				
2270 Instructional Staff Professional Development Services	<u>Elementary</u>	<u>Secondary</u>	<u>Federal</u>	<u>Total</u>
100 <u>Personnel Services – Salaries</u>				
100 Personnel Services – Salaries	496,779.59	77,148.72		573,928.31
Total Personnel Services – Salaries	\$496,779.59	\$77,148.72		\$573,928.31
200 <u>Personnel Services – Employee Benefits</u>				
210 Group Insurance – Contracted Provider	389.16	62.04		451.20
220 Social Security Contributions	36,228.94	5,510.23		41,739.17
230 PSERS Retirement Contributions	127,933.51	19,594.20		147,527.71
240 Tuition Reimbursement	45,481.00	54,970.12		100,451.12
250 Unemployment Compensation	374.57	2.10		376.67
260 Workers' Compensation	3,668.07	20.54		3,688.61
270 Group Insurance – Self-Insurance	98,959.86	12,406.17		111,366.03
Total Personnel Services – Employee Benefits	\$313,035.11	\$92,565.40		\$405,600.51
300 <u>Purchased Professional and Technical Services</u>				
324 Professional Educational Services – Employee Training and Development Services	3,186.37	2,471.20		5,657.57
329 Professional Educational Services – Other	54,448.52	42,780.97		97,229.49
330 Other Professional Services	775.60	609.40		1,385.00
Total Purchased Professional and Technical Services	\$58,410.49	\$45,861.57		\$104,272.06
500 <u>Other Purchased Services</u>				
580 Travel	2,843.97	4,759.29		7,603.26
Total Other Purchased Services	\$2,843.97	\$4,759.29		\$7,603.26
600 <u>Supplies</u>				
610 General Supplies	11.49	9.03		20.52
630 Food	924.66	726.52		1,651.18
640 Books and Periodicals	634.63	498.63		1,133.26
Total Supplies	\$1,570.78	\$1,234.18		\$2,804.96
700 <u>Property</u>				
750 Equipment – Original and Additional	4,510.04	3,543.60		8,053.64
Total Property	\$4,510.04	\$3,543.60		\$8,053.64
800 <u>Other Objects</u>				
810 Dues and Fees	1,680.00	1,320.00		3,000.00
Total Other Objects	\$1,680.00	\$1,320.00		\$3,000.00
Total 2270 Instructional Staff Professional Development Services	\$878,829.98	\$226,432.76		\$1,105,262.74

LEA : 123467303 Spring-Ford Area SD

Printed 9/27/2017 10:57:12 AM

General Fund (10)				
2300 Support Services – Administration	<u>Elementary</u>	<u>Secondary</u>	<u>Federal</u>	<u>Total</u>
100 <u>Personnel Services – Salaries</u>				
100 Personnel Services – Salaries	1,695,245.45	1,613,756.80		4,022,336.35
Total Personnel Services – Salaries	\$1,695,245.45	\$1,613,756.80		\$4,022,336.35
200 <u>Personnel Services – Employee Benefits</u>				
210 Group Insurance – Contracted Provider	3,291.33	3,186.03		7,804.56
220 Social Security Contributions	123,220.01	115,971.51		286,832.21
230 PSERS Retirement Contributions	434,025.20	410,762.77		1,010,592.56
250 Unemployment Compensation	1,115.25	1,061.77		2,645.17
260 Workers' Compensation	10,921.39	10,397.66		25,903.61
270 Group Insurance – Self-Insurance	361,729.54	324,342.07		791,738.75
290 Other Current Employee Benefits				13,426.92
Total Personnel Services – Employee Benefits	\$934,302.72	\$865,721.81		\$2,138,943.78
300 <u>Purchased Professional and Technical Services</u>				
324 Professional Educational Services – Employee Training and Development Services		330.00		1,760.00
330 Other Professional Services				464,906.13
340 Technical Services				1,427.33
350 Security / Safety Services				1,606.00
390 Other Purchased Professional and Technical Services				1,058.01
Total Purchased Professional and Technical Services		\$330.00		\$470,757.47
500 <u>Other Purchased Services</u>				
520 Insurance – General				112,599.00
530 Communications	5,577.27	5,536.50		23,027.87
550 Printing and Binding	119.00			22,337.61
580 Travel	1,015.59	878.59		7,000.52
Total Other Purchased Services	\$6,711.86	\$6,415.09		\$164,965.00
600 <u>Supplies</u>				
610 General Supplies	1,060.37	1,271.78		26,447.10
630 Food	739.98	268.06		10,344.80
640 Books and Periodicals	2,855.71	886.00		6,938.98
650 Supplies & Fees – Technology Related				211.80
Total Supplies	\$4,656.06	\$2,425.84		\$43,942.68
700 <u>Property</u>				
750 Equipment – Original and Additional		612.76		612.76
Total Property		\$612.76		\$612.76
800 <u>Other Objects</u>				
810 Dues and Fees	5,827.70	6,113.60		45,024.68
820 Claims and Judgments Against the LEA				53,445.75
Total Other Objects	\$5,827.70	\$6,113.60		\$98,470.43
Total 2300 Support Services – Administration	\$2,646,743.79	\$2,495,375.90		\$6,940,028.47

LEA : 123467303 Spring-Ford Area SD

Printed 9/27/2017 10:57:12 AM

General Fund (10)				
2310 Board Services				
	<u>Elementary</u>	<u>Secondary</u>	<u>Federal</u>	<u>Total</u>
100 <u>Personnel Services – Salaries</u>				
100 Personnel Services – Salaries				6,876.83
Total Personnel Services – Salaries				\$6,876.83
200 <u>Personnel Services – Employee Benefits</u>				
220 Social Security Contributions				514.40
230 PSERS Retirement Contributions				1,776.95
250 Unemployment Compensation				4.51
260 Workers' Compensation				44.20
Total Personnel Services – Employee Benefits				\$2,340.06
300 <u>Purchased Professional and Technical Services</u>				
324 Professional Educational Services – Employee Training and Development Services				1,355.00
Total Purchased Professional and Technical Services				\$1,355.00
500 <u>Other Purchased Services</u>				
520 Insurance – General				110,362.00
530 Communications				20.00
580 Travel				974.50
Total Other Purchased Services				\$111,356.50
600 <u>Supplies</u>				
610 General Supplies				407.64
630 Food				763.50
650 Supplies & Fees – Technology Related				211.80
Total Supplies				\$1,382.94
800 <u>Other Objects</u>				
810 Dues and Fees				13,544.00
820 Claims and Judgments Against the LEA				20,000.00
Total Other Objects				\$33,544.00
Total 2310 Board Services				\$156,855.33

LEA : 123467303 Spring-Ford Area SD

Printed 9/27/2017 10:57:12 AM

General Fund (10)				
2330 Tax Assessment and Collection Services	<u>Elementary</u>	<u>Secondary</u>	<u>Federal</u>	<u>Total</u>
100 <u>Personnel Services – Salaries</u>				
100 Personnel Services – Salaries				63,107.30
Total Personnel Services – Salaries				\$63,107.30
200 <u>Personnel Services – Employee Benefits</u>				
220 Social Security Contributions				4,827.76
250 Unemployment Compensation				41.42
260 Workers’ Compensation				405.59
Total Personnel Services – Employee Benefits				\$5,274.77
300 <u>Purchased Professional and Technical Services</u>				
330 Other Professional Services				163,299.71
340 Technical Services				1,427.33
390 Other Purchased Professional and Technical Services				1,058.01
Total Purchased Professional and Technical Services				\$165,785.05
500 <u>Other Purchased Services</u>				
520 Insurance – General				2,237.00
530 Communications				11,669.10
550 Printing and Binding				15,861.61
Total Other Purchased Services				\$29,767.71
600 <u>Supplies</u>				
610 General Supplies				2,297.60
Total Supplies				\$2,297.60
Total 2330 Tax Assessment and Collection Services				\$266,232.43

LEA : 123467303 Spring-Ford Area SD

Printed 9/27/2017 10:57:12 AM

General Fund (10)

2350 Legal and Accounting Services	<u>Elementary</u>	<u>Secondary</u>	<u>Federal</u>	<u>Total</u>
300 <u>Purchased Professional and Technical Services</u>				
330 Other Professional Services				276,102.41
Total Purchased Professional and Technical Services				\$276,102.41
800 <u>Other Objects</u>				
820 Claims and Judgments Against the LEA				33,445.75
Total Other Objects				\$33,445.75
Total 2350 Legal and Accounting Services				\$309,548.16

LEA : 123467303 Spring-Ford Area SD

Printed 9/27/2017 10:57:12 AM

General Fund (10)

2360 Office of the Superintendent / Executive Director Services	<u>Elementary</u>	<u>Secondary</u>	<u>Federal</u>	<u>Total</u>
100 <u>Personnel Services – Salaries</u>				
100 Personnel Services – Salaries				503,926.72
Total Personnel Services – Salaries				\$503,926.72
200 <u>Personnel Services – Employee Benefits</u>				
210 Group Insurance – Contracted Provider				898.08
220 Social Security Contributions				31,668.31
230 PSERS Retirement Contributions				128,000.66
250 Unemployment Compensation				330.72
260 Workers' Compensation				3,238.71
270 Group Insurance – Self-Insurance				77,472.94
290 Other Current Employee Benefits				13,426.92
Total Personnel Services – Employee Benefits				\$255,036.34
300 <u>Purchased Professional and Technical Services</u>				
324 Professional Educational Services – Employee Training and Development Services				75.00
330 Other Professional Services				25,415.60
Total Purchased Professional and Technical Services				\$25,490.60
500 <u>Other Purchased Services</u>				
530 Communications	792.96	623.05		1,416.01
550 Printing and Binding				3,462.00
580 Travel				4,010.82
Total Other Purchased Services	\$792.96	\$623.05		\$8,888.83
600 <u>Supplies</u>				
610 General Supplies				3,771.91
630 Food				6,716.26
640 Books and Periodicals				3,197.27
Total Supplies				\$13,685.44
800 <u>Other Objects</u>				
810 Dues and Fees				15,791.75
Total Other Objects				\$15,791.75
Total 2360 Office of the Superintendent / Executive Director Services	\$792.96	\$623.05		\$822,819.68

LEA : 123467303 Spring-Ford Area SD

Printed 9/27/2017 10:57:12 AM

General Fund (10)				
2370 Community Relations Services	<u>Elementary</u>	<u>Secondary</u>	<u>Federal</u>	<u>Total</u>
100 <u>Personnel Services – Salaries</u>				
100 Personnel Services – Salaries				139,423.25
Total Personnel Services – Salaries				\$139,423.25
200 <u>Personnel Services – Employee Benefits</u>				
210 Group Insurance – Contracted Provider				429.12
220 Social Security Contributions				10,630.22
230 PSERS Retirement Contributions				36,026.98
250 Unemployment Compensation				91.50
260 Workers' Compensation				896.06
270 Group Insurance – Self-Insurance				28,194.20
Total Personnel Services – Employee Benefits				\$76,268.08
500 <u>Other Purchased Services</u>				
530 Communications				225.00
580 Travel				121.02
Total Other Purchased Services				\$346.02
600 <u>Supplies</u>				
610 General Supplies				98.75
Total Supplies				\$98.75
Total 2370 Community Relations Services				\$216,136.10

LEA : 123467303 Spring-Ford Area SD

Printed 9/27/2017 10:57:12 AM

General Fund (10)

2380 Office of the Principal Services	Elementary	Secondary	Federal	Total
100 <u>Personnel Services – Salaries</u>				
100 Personnel Services – Salaries	1,695,245.45	1,613,756.80		3,309,002.25
Total Personnel Services – Salaries	\$1,695,245.45	\$1,613,756.80		\$3,309,002.25
200 <u>Personnel Services – Employee Benefits</u>				
210 Group Insurance – Contracted Provider	3,291.33	3,186.03		6,477.36
220 Social Security Contributions	123,220.01	115,971.51		239,191.52
230 PSERS Retirement Contributions	434,025.20	410,762.77		844,787.97
250 Unemployment Compensation	1,115.25	1,061.77		2,177.02
260 Workers' Compensation	10,921.39	10,397.66		21,319.05
270 Group Insurance – Self-Insurance	361,729.54	324,342.07		686,071.61
Total Personnel Services – Employee Benefits	\$934,302.72	\$865,721.81		\$1,800,024.53
300 <u>Purchased Professional and Technical Services</u>				
324 Professional Educational Services – Employee Training and Development Services		330.00		330.00
Total Purchased Professional and Technical Services		\$330.00		\$330.00
500 <u>Other Purchased Services</u>				
530 Communications	4,784.31	4,913.45		9,697.76
550 Printing and Binding	119.00			119.00
580 Travel	1,015.59	878.59		1,894.18
Total Other Purchased Services	\$5,918.90	\$5,792.04		\$11,710.94
600 <u>Supplies</u>				
610 General Supplies	1,060.37	1,271.78		2,332.15
630 Food	739.98	268.06		1,008.04
640 Books and Periodicals	2,855.71	886.00		3,741.71
Total Supplies	\$4,656.06	\$2,425.84		\$7,081.90
700 <u>Property</u>				
750 Equipment – Original and Additional		612.76		612.76
Total Property		\$612.76		\$612.76
800 <u>Other Objects</u>				
810 Dues and Fees	5,827.70	6,113.60		11,941.30
Total Other Objects	\$5,827.70	\$6,113.60		\$11,941.30
Total 2380 Office of the Principal Services	\$2,645,950.83	\$2,494,752.85		\$5,140,703.68

LEA : 123467303 Spring-Ford Area SD

Printed 9/27/2017 10:57:12 AM

General Fund (10)				
2390 Other Administration Services	<u>Elementary</u>	<u>Secondary</u>	<u>Federal</u>	<u>Total</u>
300 <u>Purchased Professional and Technical Services</u>				
330 Other Professional Services				88.41
350 Security / Safety Services				1,606.00
Total Purchased Professional and Technical Services				\$1,694.41
500 <u>Other Purchased Services</u>				
550 Printing and Binding				2,895.00
Total Other Purchased Services				\$2,895.00
600 <u>Supplies</u>				
610 General Supplies				17,539.05
630 Food				1,857.00
Total Supplies				\$19,396.05
800 <u>Other Objects</u>				
810 Dues and Fees				3,747.63
Total Other Objects				\$3,747.63
Total 2390 Other Administration Services				\$27,733.09

LEA : 123467303 Spring-Ford Area SD

Printed 9/27/2017 10:57:12 AM

General Fund (10)				
2400 Support Services – Pupil Health	<u>Elementary</u>	<u>Secondary</u>	<u>Federal</u>	<u>Total</u>
100 <u>Personnel Services – Salaries</u>				
100 Personnel Services – Salaries			2,967.52	701,972.77
Total Personnel Services – Salaries			\$2,967.52	\$701,972.77
200 <u>Personnel Services – Employee Benefits</u>				
210 Group Insurance – Contracted Provider				761.40
220 Social Security Contributions			226.59	51,284.91
230 PSERS Retirement Contributions			383.40	180,901.34
250 Unemployment Compensation				460.72
260 Workers' Compensation				4,511.62
270 Group Insurance – Self-Insurance				240,162.89
Total Personnel Services – Employee Benefits			\$609.99	\$478,082.88
300 <u>Purchased Professional and Technical Services</u>				
322 Professional Educational Services – Ius				38,573.41
324 Professional Educational Services – Employee Training and Development Services				330.00
329 Professional Educational Services – Other				104,520.22
330 Other Professional Services			304,456.46	717,640.61
Total Purchased Professional and Technical Services			\$304,456.46	\$861,064.24
500 <u>Other Purchased Services</u>				
530 Communications				62.00
580 Travel				9,150.00
Total Other Purchased Services				\$9,212.00
600 <u>Supplies</u>				
610 General Supplies				20,538.53
630 Food				684.23
640 Books and Periodicals				219.00
Total Supplies				\$21,441.76
700 <u>Property</u>				
750 Equipment – Original and Additional				38,120.00
760 Equipment – Replacement				529.00
Total Property				\$38,649.00
800 <u>Other Objects</u>				
810 Dues and Fees				112.00
Total Other Objects				\$112.00
Total 2400 Support Services – Pupil Health			\$308,033.97	\$2,110,534.65

Page 77

LEA : 123467303 Spring-Ford Area SD

Printed 9/27/2017 10:57:12 AM

General Fund (10)

2430 Dental Services

	<u>Elementary</u>	<u>Secondary</u>	<u>Federal</u>	<u>Total</u>
100 <u>Personnel Services – Salaries</u>				
100 Personnel Services – Salaries				111.15
Total Personnel Services – Salaries				\$111.15
200 <u>Personnel Services – Employee Benefits</u>				
220 Social Security Contributions				8.51
250 Unemployment Compensation				0.08
260 Workers’ Compensation				0.71
Total Personnel Services – Employee Benefits				\$9.30
300 <u>Purchased Professional and Technical Services</u>				
330 Other Professional Services				1,605.00
Total Purchased Professional and Technical Services				\$1,605.00
600 <u>Supplies</u>				
610 General Supplies				5,870.43
Total Supplies				\$5,870.43
Total 2430 Dental Services				\$7,595.88

LEA : 123467303 Spring-Ford Area SD

Printed 9/27/2017 10:57:12 AM

General Fund (10)				
2440 Nursing Services				
	<u>Elementary</u>	<u>Secondary</u>	<u>Federal</u>	<u>Total</u>
100 <u>Personnel Services – Salaries</u>				
100 Personnel Services – Salaries			2,967.52	648,561.87
Total Personnel Services – Salaries			\$2,967.52	\$648,561.87
200 <u>Personnel Services – Employee Benefits</u>				
210 Group Insurance – Contracted Provider				719.10
220 Social Security Contributions			226.59	47,244.62
230 PSERS Retirement Contributions			383.40	167,126.28
250 Unemployment Compensation				425.66
260 Workers' Compensation				4,168.35
270 Group Insurance – Self-Insurance				234,090.92
Total Personnel Services – Employee Benefits			\$609.99	\$453,774.93
300 <u>Purchased Professional and Technical Services</u>				
322 Professional Educational Services – Ius				29,230.00
324 Professional Educational Services – Employee Training and Development Services				330.00
329 Professional Educational Services – Other				66,641.38
330 Other Professional Services				15,716.50
Total Purchased Professional and Technical Services				\$111,917.88
500 <u>Other Purchased Services</u>				
530 Communications				62.00
Total Other Purchased Services				\$62.00
600 <u>Supplies</u>				
610 General Supplies				13,839.98
Total Supplies				\$13,839.98
700 <u>Property</u>				
750 Equipment – Original and Additional				38,120.00
760 Equipment – Replacement				529.00
Total Property				\$38,649.00
800 <u>Other Objects</u>				
810 Dues and Fees				112.00
Total Other Objects				\$112.00
Total 2440 Nursing Services			\$3,577.51	\$1,266,917.66

LEA : 123467303 Spring-Ford Area SD

Printed 9/27/2017 10:57:12 AM

General Fund (10)

2450 Nonpublic Health Services	<u>Elementary</u>	<u>Secondary</u>	<u>Federal</u>	<u>Total</u>
100 <u>Personnel Services – Salaries</u>				
100 Personnel Services – Salaries				34,516.75
Total Personnel Services – Salaries				\$34,516.75
200 <u>Personnel Services – Employee Benefits</u>				
210 Group Insurance – Contracted Provider				42.30
220 Social Security Contributions				2,619.71
230 PSERS Retirement Contributions				8,921.44
250 Unemployment Compensation				22.65
260 Workers' Compensation				221.84
270 Group Insurance – Self-Insurance				6,071.97
Total Personnel Services – Employee Benefits				\$17,899.91
Total 2450 Nonpublic Health Services				\$52,416.66

LEA : 123467303 Spring-Ford Area SD

Printed 9/27/2017 10:57:12 AM

General Fund (10)				
2490 Other Health Services	<u>Elementary</u>	<u>Secondary</u>	<u>Federal</u>	<u>Total</u>
100 <u>Personnel Services – Salaries</u>				
100 Personnel Services – Salaries				18,783.00
Total Personnel Services – Salaries				\$18,783.00
200 <u>Personnel Services – Employee Benefits</u>				
220 Social Security Contributions				1,412.07
230 PSERS Retirement Contributions				4,853.62
250 Unemployment Compensation				12.33
260 Workers' Compensation				120.72
Total Personnel Services – Employee Benefits				\$6,398.74
300 <u>Purchased Professional and Technical Services</u>				
329 Professional Educational Services – Other				37,878.84
Total Purchased Professional and Technical Services				\$37,878.84
500 <u>Other Purchased Services</u>				
580 Travel				9,150.00
Total Other Purchased Services				\$9,150.00
600 <u>Supplies</u>				
610 General Supplies				828.12
630 Food				684.23
640 Books and Periodicals				219.00
Total Supplies				\$1,731.35
Total 2490 Other Health Services				\$73,941.93

LEA : 123467303 Spring-Ford Area SD

Printed 9/27/2017 10:57:12 AM

General Fund (10)

	<u>Elementary</u>	<u>Secondary</u>	<u>Federal</u>	<u>Total</u>
2500 Support Services – Business				
100 <u>Personnel Services – Salaries</u>				
100 Personnel Services – Salaries			36,063.36	573,685.00
Total Personnel Services – Salaries			\$36,063.36	\$573,685.00
200 <u>Personnel Services – Employee Benefits</u>				
210 Group Insurance – Contracted Provider			51.70	1,078.70
220 Social Security Contributions			1,337.48	41,506.75
230 PSERS Retirement Contributions			4,659.36	141,490.66
250 Unemployment Compensation				376.50
260 Workers' Compensation				3,687.05
270 Group Insurance – Self-Insurance			8,312.41	132,735.06
290 Other Current Employee Benefits				56,528.26
Total Personnel Services – Employee Benefits			\$14,360.95	\$377,402.98
300 <u>Purchased Professional and Technical Services</u>				
322 Professional Educational Services – Ius				12,000.00
324 Professional Educational Services – Employee Training and Development Services				75.00
330 Other Professional Services			1,900.00	18,850.00
340 Technical Services				51,694.51
Total Purchased Professional and Technical Services			\$1,900.00	\$82,619.51
400 <u>Purchased Property Services</u>				
430 Repairs and Maintenance Services				445.00
440 Rentals				3,744.00
Total Purchased Property Services				\$4,189.00
500 <u>Other Purchased Services</u>				
530 Communications				5,974.79
549 Other Advertising/Public Relations				9,840.56
550 Printing and Binding				3,598.61
580 Travel				224.19
Total Other Purchased Services				\$19,638.15
600 <u>Supplies</u>				
610 General Supplies				5,132.24
Total Supplies				\$5,132.24
800 <u>Other Objects</u>				
810 Dues and Fees				15,193.65
Total Other Objects				\$15,193.65
Total 2500 Support Services – Business			\$52,324.31	\$1,077,860.53

LEA : 123467303 Spring-Ford Area SD

Printed 9/27/2017 10:57:12 AM

General Fund (10)				
2510 Fiscal Services	<u>Elementary</u>	<u>Secondary</u>	<u>Federal</u>	<u>Total</u>
100 <u>Personnel Services – Salaries</u>				
100 Personnel Services – Salaries			36,063.36	515,182.16
Total Personnel Services – Salaries			\$36,063.36	\$515,182.16
200 <u>Personnel Services – Employee Benefits</u>				
210 Group Insurance – Contracted Provider			51.70	988.86
220 Social Security Contributions			1,337.48	38,269.85
230 PSERS Retirement Contributions			4,659.36	130,619.99
250 Unemployment Compensation				338.11
260 Workers' Compensation				3,311.06
270 Group Insurance – Self-Insurance			8,312.41	123,703.51
290 Other Current Employee Benefits				54,690.00
Total Personnel Services – Employee Benefits			\$14,360.95	\$351,921.38
300 <u>Purchased Professional and Technical Services</u>				
322 Professional Educational Services – Ius				12,000.00
324 Professional Educational Services – Employee Training and Development Services				75.00
330 Other Professional Services			1,900.00	11,600.00
Total Purchased Professional and Technical Services			\$1,900.00	\$23,675.00
400 <u>Purchased Property Services</u>				
430 Repairs and Maintenance Services				445.00
Total Purchased Property Services				\$445.00
500 <u>Other Purchased Services</u>				
530 Communications				989.56
550 Printing and Binding				2,325.61
580 Travel				189.34
Total Other Purchased Services				\$3,504.51
600 <u>Supplies</u>				
610 General Supplies				1,412.85
Total Supplies				\$1,412.85
800 <u>Other Objects</u>				
810 Dues and Fees				735.25
Total Other Objects				\$735.25
Total 2510 Fiscal Services			\$52,324.31	\$896,876.15

LEA : 123467303 Spring-Ford Area SD

Printed 9/27/2017 10:57:12 AM

General Fund (10)				
2511 Supervision of Fiscal Services - Head of Component	<u>Elementary</u>	<u>Secondary</u>	<u>Federal</u>	<u>Total</u>
100 <u>Personnel Services – Salaries</u>				
100 Personnel Services – Salaries				137,847.98
Total Personnel Services – Salaries				\$137,847.98
200 <u>Personnel Services – Employee Benefits</u>				
210 Group Insurance – Contracted Provider				278.26
220 Social Security Contributions				10,446.59
230 PSERS Retirement Contributions				34,003.52
250 Unemployment Compensation				90.47
260 Workers' Compensation				885.94
270 Group Insurance – Self-Insurance				21,230.95
290 Other Current Employee Benefits				54,690.00
Total Personnel Services – Employee Benefits				\$121,625.73
300 <u>Purchased Professional and Technical Services</u>				
330 Other Professional Services				9,700.00
Total Purchased Professional and Technical Services				\$9,700.00
500 <u>Other Purchased Services</u>				
530 Communications				393.11
580 Travel				13.11
Total Other Purchased Services				\$406.22
600 <u>Supplies</u>				
610 General Supplies				24.37
Total Supplies				\$24.37
800 <u>Other Objects</u>				
810 Dues and Fees				248.75
Total Other Objects				\$248.75
Total 2511 Supervision of Fiscal Services - Head of Component				\$269,853.05

LEA : 123467303 Spring-Ford Area SD

Printed 9/27/2017 10:57:12 AM

General Fund (10)

2512 Budgeting Services	<u>Elementary</u>	<u>Secondary</u>	<u>Federal</u>	<u>Total</u>
100 <u>Personnel Services – Salaries</u>				
100 Personnel Services – Salaries				37,521.26
Total Personnel Services – Salaries				\$37,521.26
200 <u>Personnel Services – Employee Benefits</u>				
210 Group Insurance – Contracted Provider				84.20
220 Social Security Contributions				2,788.14
230 PSERS Retirement Contributions				9,695.54
250 Unemployment Compensation				24.62
260 Workers' Compensation				241.15
270 Group Insurance – Self-Insurance				6,446.46
Total Personnel Services – Employee Benefits				\$19,280.11
300 <u>Purchased Professional and Technical Services</u>				
322 Professional Educational Services – Ius				6,000.00
324 Professional Educational Services – Employee Training and Development Services				37.50
Total Purchased Professional and Technical Services				\$6,037.50
500 <u>Other Purchased Services</u>				
530 Communications				288.81
580 Travel				26.10
Total Other Purchased Services				\$314.91
600 <u>Supplies</u>				
610 General Supplies				11.30
Total Supplies				\$11.30
800 <u>Other Objects</u>				
810 Dues and Fees				133.75
Total Other Objects				\$133.75
Total 2512 Budgeting Services				\$63,298.83

LEA : 123467303 Spring-Ford Area SD

Printed 9/27/2017 10:57:12 AM

General Fund (10)

2513 Receiving and Disbursing Funds Services

Elementary Secondary Federal Total

100 <u>Personnel Services – Salaries</u>				
100 Personnel Services – Salaries				38,149.72
Total Personnel Services – Salaries				\$38,149.72
200 <u>Personnel Services – Employee Benefits</u>				
210 Group Insurance – Contracted Provider				56.40
220 Social Security Contributions				2,530.37
230 PSERS Retirement Contributions				9,857.84
250 Unemployment Compensation				25.04
260 Workers' Compensation				245.19
270 Group Insurance – Self-Insurance				18,411.88
Total Personnel Services – Employee Benefits				\$31,126.72
500 <u>Other Purchased Services</u>				
550 Printing and Binding				2,325.61
Total Other Purchased Services				\$2,325.61
Total 2513 Receiving and Disbursing Funds Services				\$71,602.05

LEA : 123467303 Spring-Ford Area SD

Printed 9/27/2017 10:57:12 AM

General Fund (10)

2514 Payroll Services

	<u>Elementary</u>	<u>Secondary</u>	<u>Federal</u>	<u>Total</u>
100 <u>Personnel Services – Salaries</u>				
100 Personnel Services – Salaries				50,901.34
Total Personnel Services – Salaries				\$50,901.34
200 <u>Personnel Services – Employee Benefits</u>				
210 Group Insurance – Contracted Provider				114.00
220 Social Security Contributions				3,871.89
230 PSERS Retirement Contributions				13,147.23
250 Unemployment Compensation				33.41
260 Workers' Compensation				327.14
270 Group Insurance – Self-Insurance				18,766.89
Total Personnel Services – Employee Benefits				\$36,260.56
Total 2514 Payroll Services				\$87,161.90

LEA : 123467303 Spring-Ford Area SD

Printed 9/27/2017 10:57:12 AM

General Fund (10)

2515 Financial Accounting Services	<u>Elementary</u>	<u>Secondary</u>	<u>Federal</u>	<u>Total</u>
100 <u>Personnel Services – Salaries</u>				
100 Personnel Services – Salaries				83,895.27
Total Personnel Services – Salaries				\$83,895.27
200 <u>Personnel Services – Employee Benefits</u>				
210 Group Insurance – Contracted Provider				169.20
220 Social Security Contributions				6,274.52
230 PSERS Retirement Contributions				21,650.05
250 Unemployment Compensation				55.06
260 Workers' Compensation				539.19
270 Group Insurance – Self-Insurance				8,033.46
Total Personnel Services – Employee Benefits				\$36,721.48
Total 2515 Financial Accounting Services				\$120,616.75

LEA : 123467303 Spring-Ford Area SD

Printed 9/27/2017 10:57:12 AM

General Fund (10)				
2516 Internal Auditing Services				
	<u>Elementary</u>	<u>Secondary</u>	<u>Federal</u>	<u>Total</u>
100 <u>Personnel Services – Salaries</u>				
100 Personnel Services – Salaries				37,521.05
Total Personnel Services – Salaries				\$37,521.05
200 <u>Personnel Services – Employee Benefits</u>				
210 Group Insurance – Contracted Provider				84.10
220 Social Security Contributions				2,788.05
230 PSERS Retirement Contributions				9,695.33
250 Unemployment Compensation				24.62
260 Workers' Compensation				241.15
270 Group Insurance – Self-Insurance				8,284.09
Total Personnel Services – Employee Benefits				\$21,117.34
300 <u>Purchased Professional and Technical Services</u>				
322 Professional Educational Services – Ius				6,000.00
324 Professional Educational Services – Employee Training and Development Services				37.50
Total Purchased Professional and Technical Services				\$6,037.50
500 <u>Other Purchased Services</u>				
530 Communications				273.73
580 Travel				26.11
Total Other Purchased Services				\$299.84
600 <u>Supplies</u>				
610 General Supplies				11.31
Total Supplies				\$11.31
800 <u>Other Objects</u>				
810 Dues and Fees				334.00
Total Other Objects				\$334.00
Total 2516 Internal Auditing Services				\$65,321.04

LEA : 123467303 Spring-Ford Area SD

Printed 9/27/2017 10:57:12 AM

General Fund (10)				
2517 Property Accounting Services	<u>Elementary</u>	<u>Secondary</u>	<u>Federal</u>	<u>Total</u>
100 <u>Personnel Services – Salaries</u>				
100 Personnel Services – Salaries				14,154.33
Total Personnel Services – Salaries				\$14,154.33
200 <u>Personnel Services – Employee Benefits</u>				
210 Group Insurance – Contracted Provider				28.80
220 Social Security Contributions				1,082.42
230 PSERS Retirement Contributions				3,649.39
250 Unemployment Compensation				9.29
260 Workers' Compensation				90.97
270 Group Insurance – Self-Insurance				742.17
Total Personnel Services – Employee Benefits				\$5,603.04
500 <u>Other Purchased Services</u>				
580 Travel				34.86
Total Other Purchased Services				\$34.86
Total 2517 Property Accounting Services				\$19,792.23

LEA : 123467303 Spring-Ford Area SD

Printed 9/27/2017 10:57:12 AM

General Fund (10)				
2519 Other Fiscal Services				
	<u>Elementary</u>	<u>Secondary</u>	<u>Federal</u>	<u>Total</u>
100 <u>Personnel Services – Salaries</u>				
100 Personnel Services – Salaries			36,063.36	115,191.21
Total Personnel Services – Salaries			\$36,063.36	\$115,191.21
200 <u>Personnel Services – Employee Benefits</u>				
210 Group Insurance – Contracted Provider			51.70	173.90
220 Social Security Contributions			1,337.48	8,487.87
230 PSERS Retirement Contributions			4,659.36	28,921.09
250 Unemployment Compensation				75.60
260 Workers' Compensation				740.33
270 Group Insurance – Self-Insurance			8,312.41	41,787.61
Total Personnel Services – Employee Benefits			\$14,360.95	\$80,186.40
300 <u>Purchased Professional and Technical Services</u>				
330 Other Professional Services			1,900.00	1,900.00
Total Purchased Professional and Technical Services			\$1,900.00	\$1,900.00
400 <u>Purchased Property Services</u>				
430 Repairs and Maintenance Services				445.00
Total Purchased Property Services				\$445.00
500 <u>Other Purchased Services</u>				
530 Communications				33.91
580 Travel				89.16
Total Other Purchased Services				\$123.07
600 <u>Supplies</u>				
610 General Supplies				1,365.87
Total Supplies				\$1,365.87
800 <u>Other Objects</u>				
810 Dues and Fees				18.75
Total Other Objects				\$18.75
Total 2519 Other Fiscal Services			\$52,324.31	\$199,230.30

LEA : 123467303 Spring-Ford Area SD

Printed 9/27/2017 10:57:12 AM

General Fund (10)				
2520 Purchasing Services	<u>Elementary</u>	<u>Secondary</u>	<u>Federal</u>	<u>Total</u>
100 <u>Personnel Services – Salaries</u>				
100 Personnel Services – Salaries				14,654.32
Total Personnel Services – Salaries				\$14,654.32
200 <u>Personnel Services – Employee Benefits</u>				
210 Group Insurance – Contracted Provider				28.74
220 Social Security Contributions				1,120.57
230 PSERS Retirement Contributions				3,649.39
250 Unemployment Compensation				9.62
260 Workers' Compensation				94.18
270 Group Insurance – Self-Insurance				767.51
Total Personnel Services – Employee Benefits				\$5,670.01
500 <u>Other Purchased Services</u>				
549 Other Advertising/Public Relations				9,657.03
580 Travel				34.85
Total Other Purchased Services				\$9,691.88
800 <u>Other Objects</u>				
810 Dues and Fees				200.00
Total Other Objects				\$200.00
Total 2520 Purchasing Services				\$30,216.21

LEA : 123467303 Spring-Ford Area SD

Printed 9/27/2017 10:57:12 AM

General Fund (10)				
2530 Warehousing and Distributing Services	<u>Elementary</u>	<u>Secondary</u>	<u>Federal</u>	<u>Total</u>
100 <u>Personnel Services – Salaries</u>				
100 Personnel Services – Salaries				36,560.02
Total Personnel Services – Salaries				\$36,560.02
200 <u>Personnel Services – Employee Benefits</u>				
210 Group Insurance – Contracted Provider				56.40
220 Social Security Contributions				1,558.76
230 PSERS Retirement Contributions				5,418.69
250 Unemployment Compensation				23.99
260 Workers' Compensation				234.97
270 Group Insurance – Self-Insurance				8,264.04
Total Personnel Services – Employee Benefits				\$15,556.85
500 <u>Other Purchased Services</u>				
530 Communications				600.51
Total Other Purchased Services				\$600.51
Total 2530 Warehousing and Distributing Services				\$52,717.38

LEA : 123467303 Spring-Ford Area SD

Printed 9/27/2017 10:57:12 AM

General Fund (10)				
2540 Printing, Publishing and Duplicating Services	<u>Elementary</u>	<u>Secondary</u>	<u>Federal</u>	<u>Total</u>
100 <u>Personnel Services – Salaries</u>				
100 Personnel Services – Salaries				7,288.50
Total Personnel Services – Salaries				\$7,288.50
200 <u>Personnel Services – Employee Benefits</u>				
210 Group Insurance – Contracted Provider				4.70
220 Social Security Contributions				557.57
230 PSERS Retirement Contributions				1,802.59
250 Unemployment Compensation				4.78
260 Workers' Compensation				46.84
Total Personnel Services – Employee Benefits				\$2,416.48
300 <u>Purchased Professional and Technical Services</u>				
340 Technical Services				51,694.51
Total Purchased Professional and Technical Services				\$51,694.51
600 <u>Supplies</u>				
610 General Supplies				3,106.56
Total Supplies				\$3,106.56
800 <u>Other Objects</u>				
810 Dues and Fees				14,258.40
Total Other Objects				\$14,258.40
Total 2540 Printing, Publishing and Duplicating Services				\$78,764.45

LEA : 123467303 Spring-Ford Area SD

Printed 9/27/2017 10:57:12 AM

General Fund (10)				
2590 Other Support Services – Business	<u>Elementary</u>	<u>Secondary</u>	<u>Federal</u>	<u>Total</u>
200 <u>Personnel Services – Employee Benefits</u>				
290 Other Current Employee Benefits				1,838.26
Total Personnel Services – Employee Benefits				\$1,838.26
300 <u>Purchased Professional and Technical Services</u>				
330 Other Professional Services				7,250.00
Total Purchased Professional and Technical Services				\$7,250.00
400 <u>Purchased Property Services</u>				
440 Rentals				3,744.00
Total Purchased Property Services				\$3,744.00
500 <u>Other Purchased Services</u>				
530 Communications				4,384.72
549 Other Advertising/Public Relations				183.53
550 Printing and Binding				1,273.00
Total Other Purchased Services				\$5,841.25
600 <u>Supplies</u>				
610 General Supplies				612.83
Total Supplies				\$612.83
Total 2590 Other Support Services – Business				\$19,286.34

LEA : 123467303 Spring-Ford Area SD

Printed 9/27/2017 10:57:12 AM

General Fund (10)				
2600 Operation and Maintenance of Plant Services	<u>Elementary</u>	<u>Secondary</u>	<u>Federal</u>	<u>Total</u>
100 <u>Personnel Services – Salaries</u>				
100 Personnel Services – Salaries				2,863,430.19
Total Personnel Services – Salaries				\$2,863,430.19
200 <u>Personnel Services – Employee Benefits</u>				
210 Group Insurance – Contracted Provider				3,321.61
220 Social Security Contributions				211,859.47
230 PSERS Retirement Contributions				738,308.14
250 Unemployment Compensation				1,884.27
260 Workers' Compensation				18,452.46
270 Group Insurance – Self-Insurance				826,201.47
290 Other Current Employee Benefits				11,571.00
Total Personnel Services – Employee Benefits				\$1,811,598.42
300 <u>Purchased Professional and Technical Services</u>				
324 Professional Educational Services – Employee Training and Development Services				50.00
330 Other Professional Services				46,894.71
350 Security / Safety Services				29,741.80
390 Other Purchased Professional and Technical Services				2,620.23
Total Purchased Professional and Technical Services				\$79,306.74
400 <u>Purchased Property Services</u>				
410 Cleaning Services				1,753,318.34
420 Utility Services				1,421,571.15
430 Repairs and Maintenance Services				752,575.64
440 Rentals				10,633.00
450 Construction Services				1,600.00
460 Extermination Services				6,856.64
490 Other Purchased Property Services				96.00
Total Purchased Property Services				\$3,946,650.77
500 <u>Other Purchased Services</u>				
521 Fire Insurance				56,594.00
522 Automotive Liability Insurance				53,771.00
523 General Property and Liability Insurance				190,806.00
530 Communications				14,957.75
550 Printing and Binding				127.38
580 Travel				307.63
Total Other Purchased Services				\$316,563.76
600 <u>Supplies</u>				
610 General Supplies	283,361.77	348,504.18		631,865.95
620 Energy				237,918.25
630 Food				25.00
640 Books and Periodicals				260.00
Total Supplies				\$870,069.20
700 <u>Property</u>				
750 Equipment – Original and Additional				68,993.15

LEA : 123467303 Spring-Ford Area SD

Printed 9/27/2017 10:57:12 AM

General Fund (10)				
2600 Operation and Maintenance of Plant Services	<u>Elementary</u>	<u>Secondary</u>	<u>Federal</u>	<u>Total</u>
700 <u>Property</u>				
760 Equipment – Replacement				57,759.14
Total Property				\$126,752.29
800 <u>Other Objects</u>				
810 Dues and Fees				8,587.48
Total Other Objects				\$8,587.48
Total 2600 Operation and Maintenance of Plant Services	\$283,361.77	\$348,504.18		\$10,022,958.85

LEA : 123467303 Spring-Ford Area SD

Printed 9/27/2017 10:57:12 AM

General Fund (10)				
2610 Supervision of Operation and Maintenance of Plant Services	<u>Elementary</u>	<u>Secondary</u>	<u>Federal</u>	<u>Total</u>
100 <u>Personnel Services – Salaries</u>				
100 Personnel Services – Salaries				254,879.68
Total Personnel Services – Salaries				\$254,879.68
200 <u>Personnel Services – Employee Benefits</u>				
210 Group Insurance – Contracted Provider				534.51
220 Social Security Contributions				19,109.49
230 PSERS Retirement Contributions				62,977.60
250 Unemployment Compensation				167.27
260 Workers' Compensation				1,638.10
270 Group Insurance – Self-Insurance				39,120.03
290 Other Current Employee Benefits				7,712.00
Total Personnel Services – Employee Benefits				\$131,259.00
500 <u>Other Purchased Services</u>				
530 Communications				793.53
Total Other Purchased Services				\$793.53
800 <u>Other Objects</u>				
810 Dues and Fees				632.50
Total Other Objects				\$632.50
Total 2610 Supervision of Operation and Maintenance of Plant Services				\$387,564.71

LEA : 123467303 Spring-Ford Area SD

Printed 9/27/2017 10:57:12 AM

General Fund (10)				
2611 Supervision of Operation and Maintenance of Plant Services – Head of Component	<u>Elementary</u>	<u>Secondary</u>	<u>Federal</u>	<u>Total</u>
100 <u>Personnel Services – Salaries</u>				
100 Personnel Services – Salaries				166,239.39
Total Personnel Services – Salaries				\$166,239.39
200 <u>Personnel Services – Employee Benefits</u>				
210 Group Insurance – Contracted Provider				336.03
220 Social Security Contributions				12,478.33
230 PSERS Retirement Contributions				40,331.40
250 Unemployment Compensation				109.10
260 Workers' Compensation				1,068.41
270 Group Insurance – Self-Insurance				21,443.37
290 Other Current Employee Benefits				7,712.00
Total Personnel Services – Employee Benefits				\$83,478.64
500 <u>Other Purchased Services</u>				
530 Communications				357.41
Total Other Purchased Services				\$357.41
800 <u>Other Objects</u>				
810 Dues and Fees				383.75
Total Other Objects				\$383.75
Total 2611 Supervision of Operation and Maintenance of Plant Services – Head of Component				\$250,459.19

LEA : 123467303 Spring-Ford Area SD

Printed 9/27/2017 10:57:12 AM

General Fund (10)				
2619 Supervision of Operation and Maintenance of Plant Services – All Other Supervision	<u>Elementary</u>	<u>Secondary</u>	<u>Federal</u>	<u>Total</u>
100 <u>Personnel Services – Salaries</u>				
100 Personnel Services – Salaries				88,640.29
Total Personnel Services – Salaries				\$88,640.29
200 <u>Personnel Services – Employee Benefits</u>				
210 Group Insurance – Contracted Provider				198.48
220 Social Security Contributions				6,631.16
230 PSERS Retirement Contributions				22,646.20
250 Unemployment Compensation				58.17
260 Workers' Compensation				569.69
270 Group Insurance – Self-Insurance				17,676.66
Total Personnel Services – Employee Benefits				\$47,780.36
500 <u>Other Purchased Services</u>				
530 Communications				436.12
Total Other Purchased Services				\$436.12
800 <u>Other Objects</u>				
810 Dues and Fees				248.75
Total Other Objects				\$248.75
Total 2619 Supervision of Operation and Maintenance of Plant Services – All Other Supervision				\$137,105.52

LEA : 123467303 Spring-Ford Area SD

Printed 9/27/2017 10:57:12 AM

General Fund (10)				
2620 Operation of Buildings Services	<u>Elementary</u>	<u>Secondary</u>	<u>Federal</u>	<u>Total</u>
100 <u>Personnel Services – Salaries</u>				
100 Personnel Services – Salaries				2,019,975.91
Total Personnel Services – Salaries				\$2,019,975.91
200 <u>Personnel Services – Employee Benefits</u>				
210 Group Insurance – Contracted Provider				2,166.70
220 Social Security Contributions				149,483.91
230 PSERS Retirement Contributions				524,105.28
250 Unemployment Compensation				1,330.72
260 Workers' Compensation				13,031.63
270 Group Insurance – Self-Insurance				608,631.45
290 Other Current Employee Benefits				3,859.00
Total Personnel Services – Employee Benefits				\$1,302,608.69
300 <u>Purchased Professional and Technical Services</u>				
324 Professional Educational Services – Employee Training and Development Services				50.00
330 Other Professional Services				46,894.71
390 Other Purchased Professional and Technical Services				2,620.23
Total Purchased Professional and Technical Services				\$49,564.94
400 <u>Purchased Property Services</u>				
410 Cleaning Services				1,629,201.34
420 Utility Services				1,421,544.15
430 Repairs and Maintenance Services				708,127.66
440 Rentals				10,633.00
460 Extermination Services				6,856.64
Total Purchased Property Services				\$3,776,362.79
500 <u>Other Purchased Services</u>				
521 Fire Insurance				56,594.00
522 Automotive Liability Insurance				53,624.00
523 General Property and Liability Insurance				190,806.00
530 Communications				9,618.58
550 Printing and Binding				127.38
580 Travel				307.63
Total Other Purchased Services				\$311,077.59
600 <u>Supplies</u>				
610 General Supplies	246,898.05	291,740.41		538,638.46
620 Energy				217,074.66
630 Food				25.00
640 Books and Periodicals				260.00
Total Supplies	\$246,898.05	\$291,740.41		\$755,998.12
700 <u>Property</u>				
750 Equipment – Original and Additional				62,344.07
760 Equipment – Replacement				46,716.14
Total Property				\$109,060.21

LEA : 123467303 Spring-Ford Area SD

Printed 9/27/2017 10:57:12 AM

General Fund (10)				
2620 Operation of Buildings Services	<u>Elementary</u>	<u>Secondary</u>	<u>Federal</u>	<u>Total</u>
800 <u>Other Objects</u>				
810 Dues and Fees				7,721.46
Total Other Objects				\$7,721.46
Total 2620 Operation of Buildings Services	\$246,898.05	\$291,740.41		\$8,332,369.71

LEA : 123467303 Spring-Ford Area SD

Printed 9/27/2017 10:57:12 AM

General Fund (10)				
2630 Care and Upkeep of Grounds Services	<u>Elementary</u>	<u>Secondary</u>	<u>Federal</u>	<u>Total</u>
100 <u>Personnel Services – Salaries</u>				
100 Personnel Services – Salaries				263,324.91
Total Personnel Services – Salaries				\$263,324.91
200 <u>Personnel Services – Employee Benefits</u>				
210 Group Insurance – Contracted Provider				282.00
220 Social Security Contributions				19,534.05
230 PSERS Retirement Contributions				67,742.49
250 Unemployment Compensation				172.82
260 Workers' Compensation				1,692.37
270 Group Insurance – Self-Insurance				84,621.00
Total Personnel Services – Employee Benefits				\$174,044.73
300 <u>Purchased Professional and Technical Services</u>				
350 Security / Safety Services				3,760.00
Total Purchased Professional and Technical Services				\$3,760.00
400 <u>Purchased Property Services</u>				
410 Cleaning Services				124,117.00
430 Repairs and Maintenance Services				2,650.00
450 Construction Services				1,600.00
490 Other Purchased Property Services				96.00
Total Purchased Property Services				\$128,463.00
500 <u>Other Purchased Services</u>				
530 Communications				1,776.61
Total Other Purchased Services				\$1,776.61
600 <u>Supplies</u>				
610 General Supplies	25,112.61	42,505.13		67,617.74
Total Supplies	\$25,112.61	\$42,505.13		\$67,617.74
700 <u>Property</u>				
750 Equipment – Original and Additional				5,140.00
Total Property				\$5,140.00
800 <u>Other Objects</u>				
810 Dues and Fees				50.00
Total Other Objects				\$50.00
Total 2630 Care and Upkeep of Grounds Services	\$25,112.61	\$42,505.13		\$644,176.99

LEA : 123467303 Spring-Ford Area SD

Printed 9/27/2017 10:57:12 AM

General Fund (10)				
2640 Care and Upkeep of Equipment Services	<u>Elementary</u>	<u>Secondary</u>	<u>Federal</u>	<u>Total</u>
100 <u>Personnel Services – Salaries</u>				
100 Personnel Services – Salaries				61,819.10
Total Personnel Services – Salaries				\$61,819.10
200 <u>Personnel Services – Employee Benefits</u>				
210 Group Insurance – Contracted Provider				56.40
220 Social Security Contributions				4,532.38
230 PSERS Retirement Contributions				15,915.97
250 Unemployment Compensation				40.57
260 Workers' Compensation				397.31
270 Group Insurance – Self-Insurance				18,411.88
Total Personnel Services – Employee Benefits				\$39,354.51
400 <u>Purchased Property Services</u>				
430 Repairs and Maintenance Services				19,184.10
Total Purchased Property Services				\$19,184.10
500 <u>Other Purchased Services</u>				
530 Communications				287.44
Total Other Purchased Services				\$287.44
600 <u>Supplies</u>				
610 General Supplies	2,288.37	6,656.29		8,944.66
Total Supplies				\$8,944.66
700 <u>Property</u>				
750 Equipment – Original and Additional				1,509.08
760 Equipment – Replacement				11,043.00
Total Property				\$12,552.08
Total 2640 Care and Upkeep of Equipment Services	\$2,288.37	\$6,656.29		\$142,141.89

LEA : 123467303 Spring-Ford Area SD

Printed 9/27/2017 10:57:12 AM

General Fund (10)				
2650 Vehicle Operation and Maintenance Services (Other Than Student Transportation Vehicles)	<u>Elementary</u>	<u>Secondary</u>	<u>Federal</u>	<u>Total</u>
100 <u>Personnel Services – Salaries</u>				
100 Personnel Services – Salaries				61,461.14
Total Personnel Services – Salaries				\$61,461.14
200 <u>Personnel Services – Employee Benefits</u>				
210 Group Insurance – Contracted Provider				56.40
220 Social Security Contributions				4,556.85
230 PSERS Retirement Contributions				15,823.48
250 Unemployment Compensation				40.34
260 Workers' Compensation				395.01
270 Group Insurance – Self-Insurance				19,794.63
Total Personnel Services – Employee Benefits				\$40,666.71
400 <u>Purchased Property Services</u>				
430 Repairs and Maintenance Services				22,140.88
Total Purchased Property Services				\$22,140.88
500 <u>Other Purchased Services</u>				
522 Automotive Liability Insurance				147.00
530 Communications				287.45
Total Other Purchased Services				\$434.45
600 <u>Supplies</u>				
610 General Supplies	6,576.25	5,624.67		12,200.92
620 Energy				20,843.59
Total Supplies	\$6,576.25	\$5,624.67		\$33,044.51
Total 2650 Vehicle Operation and Maintenance Services (Other Than Student Transportation Vehicles)	\$6,576.25	\$5,624.67		\$157,747.69

LEA : 123467303 Spring-Ford Area SD

Printed 9/27/2017 10:57:12 AM

General Fund (10)				
2660 Safety and Security Services	<u>Elementary</u>	<u>Secondary</u>	<u>Federal</u>	<u>Total</u>
100 <u>Personnel Services – Salaries</u>				
100 Personnel Services – Salaries				141,007.29
Total Personnel Services – Salaries				\$141,007.29
200 <u>Personnel Services – Employee Benefits</u>				
210 Group Insurance – Contracted Provider				169.20
220 Social Security Contributions				10,175.96
230 PSERS Retirement Contributions				36,048.78
250 Unemployment Compensation				92.54
260 Workers' Compensation				906.24
270 Group Insurance – Self-Insurance				37,210.60
Total Personnel Services – Employee Benefits				\$84,603.32
300 <u>Purchased Professional and Technical Services</u>				
350 Security / Safety Services				25,981.80
Total Purchased Professional and Technical Services				\$25,981.80
400 <u>Purchased Property Services</u>				
430 Repairs and Maintenance Services				473.00
Total Purchased Property Services				\$473.00
500 <u>Other Purchased Services</u>				
530 Communications				1,867.18
Total Other Purchased Services				\$1,867.18
600 <u>Supplies</u>				
610 General Supplies	1,298.20	1,044.02		2,342.22
Total Supplies	\$1,298.20	\$1,044.02		\$2,342.22
Total 2660 Safety and Security Services	\$1,298.20	\$1,044.02		\$256,274.81

LEA : 123467303 Spring-Ford Area SD

Printed 9/27/2017 10:57:12 AM

General Fund (10)				
2690 Other Operation and Maintenance of Plant Services	<u>Elementary</u>	<u>Secondary</u>	<u>Federal</u>	<u>Total</u>
100 <u>Personnel Services – Salaries</u>				
100 Personnel Services – Salaries				60,962.16
Total Personnel Services – Salaries				\$60,962.16
200 <u>Personnel Services – Employee Benefits</u>				
210 Group Insurance – Contracted Provider				56.40
220 Social Security Contributions				4,466.83
230 PSERS Retirement Contributions				15,694.54
250 Unemployment Compensation				40.01
260 Workers' Compensation				391.80
270 Group Insurance – Self-Insurance				18,411.88
Total Personnel Services – Employee Benefits				\$39,061.46
400 <u>Purchased Property Services</u>				
420 Utility Services				27.00
Total Purchased Property Services				\$27.00
500 <u>Other Purchased Services</u>				
530 Communications				326.96
Total Other Purchased Services				\$326.96
600 <u>Supplies</u>				
610 General Supplies	1,188.29	933.66		2,121.95
Total Supplies	\$1,188.29	\$933.66		\$2,121.95
800 <u>Other Objects</u>				
810 Dues and Fees				183.52
Total Other Objects				\$183.52
Total 2690 Other Operation and Maintenance of Plant Services	\$1,188.29	\$933.66		\$102,683.05

LEA : 123467303 Spring-Ford Area SD

Printed 9/27/2017 10:57:12 AM

General Fund (10)				
2700 Student Transportation Services				
	<u>Elementary</u>	<u>Secondary</u>	<u>Federal</u>	<u>Total</u>
100 <u>Personnel Services – Salaries</u>				
100 Personnel Services – Salaries				119,687.37
Total Personnel Services – Salaries				\$119,687.37
200 <u>Personnel Services – Employee Benefits</u>				
210 Group Insurance – Contracted Provider				234.60
220 Social Security Contributions				8,758.02
230 PSERS Retirement Contributions				30,668.70
250 Unemployment Compensation				78.55
260 Workers' Compensation				769.22
270 Group Insurance – Self-Insurance				37,411.44
Total Personnel Services – Employee Benefits				\$77,920.53
300 <u>Purchased Professional and Technical Services</u>				
330 Other Professional Services				4,869.51
Total Purchased Professional and Technical Services				\$4,869.51
400 <u>Purchased Property Services</u>				
430 Repairs and Maintenance Services				5,226.74
440 Rentals				3,600.00
Total Purchased Property Services				\$8,826.74
500 <u>Other Purchased Services</u>				
511 Student Transportation Services from Another LEA Within the State				267.92
513 Contracted Carriers			183,492.66	6,442,480.55
516 Student Transportation Services From the IU				344,751.30
530 Communications				816.26
Total Other Purchased Services			\$183,492.66	\$6,788,316.03
600 <u>Supplies</u>				
610 General Supplies				465.53
620 Energy				2,781.80
650 Supplies & Fees – Technology Related				83.16
Total Supplies				\$3,330.49
800 <u>Other Objects</u>				
810 Dues and Fees				18.75
Total Other Objects				\$18.75
Total 2700 Student Transportation Services			\$183,492.66	\$7,002,969.42

LEA : 123467303 Spring-Ford Area SD

Printed 9/27/2017 10:57:12 AM

General Fund (10)				
2710 Supervision of Student Transportation Services	<u>Elementary</u>	<u>Secondary</u>	<u>Federal</u>	<u>Total</u>
100 <u>Personnel Services – Salaries</u>				
100 Personnel Services – Salaries				119,687.37
Total Personnel Services – Salaries				\$119,687.37
200 <u>Personnel Services – Employee Benefits</u>				
210 Group Insurance – Contracted Provider				234.60
220 Social Security Contributions				8,758.02
230 PSERS Retirement Contributions				30,668.70
250 Unemployment Compensation				78.55
260 Workers' Compensation				769.22
270 Group Insurance – Self-Insurance				37,411.44
Total Personnel Services – Employee Benefits				\$77,920.53
500 <u>Other Purchased Services</u>				
530 Communications				421.26
Total Other Purchased Services				\$421.26
Total 2710 Supervision of Student Transportation Services				\$198,029.16

LEA : 123467303 Spring-Ford Area SD

Printed 9/27/2017 10:57:12 AM

General Fund (10)

2711 Supervision of Student Transportation Services – Head of Component	<u>Elementary</u>	<u>Secondary</u>	<u>Federal</u>	<u>Total</u>
100 <u>Personnel Services – Salaries</u>				
100 Personnel Services – Salaries				119,687.37
Total Personnel Services – Salaries				\$119,687.37
200 <u>Personnel Services – Employee Benefits</u>				
210 Group Insurance – Contracted Provider				234.60
220 Social Security Contributions				8,758.02
230 PSERS Retirement Contributions				30,668.70
250 Unemployment Compensation				78.55
260 Workers' Compensation				769.22
270 Group Insurance – Self-Insurance				37,411.44
Total Personnel Services – Employee Benefits				\$77,920.53
500 <u>Other Purchased Services</u>				
530 Communications				421.26
Total Other Purchased Services				\$421.26
Total 2711 Supervision of Student Transportation Services – Head of Component				\$198,029.16

LEA : 123467303 Spring-Ford Area SD

Printed 9/27/2017 10:57:12 AM

General Fund (10)				
2720 Vehicle Operation Services	<u>Elementary</u>	<u>Secondary</u>	<u>Federal</u>	<u>Total</u>
300 <u>Purchased Professional and Technical Services</u>				
330 Other Professional Services				4,869.51
Total Purchased Professional and Technical Services				\$4,869.51
400 <u>Purchased Property Services</u>				
440 Rentals				3,600.00
Total Purchased Property Services				\$3,600.00
500 <u>Other Purchased Services</u>				
511 Student Transportation Services from Another LEA Within the State				267.92
513 Contracted Carriers			183,492.66	4,212,791.57
516 Student Transportation Services From the IU				344,751.30
530 Communications				395.00
Total Other Purchased Services			\$183,492.66	\$4,558,205.79
600 <u>Supplies</u>				
610 General Supplies				465.53
650 Supplies & Fees – Technology Related				83.16
Total Supplies				\$548.69
800 <u>Other Objects</u>				
810 Dues and Fees				18.75
Total Other Objects				\$18.75
Total 2720 Vehicle Operation Services			\$183,492.66	\$4,567,242.74

LEA : 123467303 Spring-Ford Area SD

Printed 9/27/2017 10:57:12 AM

General Fund (10)

2740 Vehicle Servicing and Maintenance Services	<u>Elementary</u>	<u>Secondary</u>	<u>Federal</u>	<u>Total</u>
400 <u>Purchased Property Services</u>				
430 Repairs and Maintenance Services				5,226.74
Total Purchased Property Services				\$5,226.74
500 <u>Other Purchased Services</u>				
513 Contracted Carriers				312,940.66
Total Other Purchased Services				\$312,940.66
600 <u>Supplies</u>				
620 Energy				2,781.80
Total Supplies				\$2,781.80
Total 2740 Vehicle Servicing and Maintenance Services				\$320,949.20

LEA : 123467303 Spring-Ford Area SD

Printed 9/27/2017 10:57:12 AM

General Fund (10)

2750 Nonpublic Transportation	<u>Elementary</u>	<u>Secondary</u>	<u>Federal</u>	<u>Total</u>
500 <u>Other Purchased Services</u>				
513 Contracted Carriers				1,913,767.52
Total Other Purchased Services				\$1,913,767.52
Total 2750 Nonpublic Transportation				\$1,913,767.52

LEA : 123467303 Spring-Ford Area SD

Printed 9/27/2017 10:57:12 AM

General Fund (10)

2790 Other Student Transportation Services	<u>Elementary</u>	<u>Secondary</u>	<u>Federal</u>	<u>Total</u>
500 <u>Other Purchased Services</u>				
513 Contracted Carriers				2,980.80
Total Other Purchased Services				\$2,980.80
Total 2790 Other Student Transportation Services				\$2,980.80

LEA : 123467303 Spring-Ford Area SD

Printed 9/27/2017 10:57:12 AM

General Fund (10)				
2800 Support Services – Central				
	<u>Elementary</u>	<u>Secondary</u>	<u>Federal</u>	<u>Total</u>
100 <u>Personnel Services – Salaries</u>				
100 Personnel Services – Salaries				1,085,853.24
Total Personnel Services – Salaries				\$1,085,853.24
200 <u>Personnel Services – Employee Benefits</u>				
210 Group Insurance – Contracted Provider				1,968.18
220 Social Security Contributions				80,784.73
230 PSERS Retirement Contributions				276,111.54
240 Tuition Reimbursement				79,318.00
250 Unemployment Compensation				712.65
260 Workers' Compensation				6,978.71
270 Group Insurance – Self-Insurance				262,530.88
290 Other Current Employee Benefits				2,646.00
Total Personnel Services – Employee Benefits				\$711,050.69
300 <u>Purchased Professional and Technical Services</u>				
322 Professional Educational Services – Ius				1,025.00
324 Professional Educational Services – Employee Training and Development Services				7,860.62
330 Other Professional Services				51,828.87
340 Technical Services				144,756.00
Total Purchased Professional and Technical Services				\$205,470.49
400 <u>Purchased Property Services</u>				
410 Cleaning Services				1,018.40
430 Repairs and Maintenance Services				75,826.48
440 Rentals				949,899.30
Total Purchased Property Services				\$1,026,744.18
500 <u>Other Purchased Services</u>				
530 Communications				129,344.24
549 Other Advertising/Public Relations				1,573.75
550 Printing and Binding				26.47
580 Travel				12,731.30
Total Other Purchased Services				\$143,675.76
600 <u>Supplies</u>				
610 General Supplies				285,512.29
640 Books and Periodicals				68,606.70
650 Supplies & Fees – Technology Related				161,717.75
Total Supplies				\$515,836.74
700 <u>Property</u>				
750 Equipment – Original and Additional				84,474.21
760 Equipment – Replacement				22,223.57
Total Property				\$106,697.78
800 <u>Other Objects</u>				
810 Dues and Fees				1,024.07

LEA : 123467303 Spring-Ford Area SD

Printed 9/27/2017 10:57:12 AM

General Fund (10)

2800 Support Services – Central	<u>Elementary</u>	<u>Secondary</u>	<u>Federal</u>	<u>Total</u>
800 <u>Other Objects</u>				
890 Miscellaneous Expenditures				35.00
Total Other Objects				\$1,059.07
Total 2800 Support Services – Central				\$3,796,387.95

LEA : 123467303 Spring-Ford Area SD

Printed 9/27/2017 10:57:12 AM

General Fund (10)				
2810 Planning, Research, Development and Evaluation Services	<u>Elementary</u>	<u>Secondary</u>	<u>Federal</u>	<u>Total</u>
100 <u>Personnel Services – Salaries</u>				
100 Personnel Services – Salaries				856,170.10
Total Personnel Services – Salaries				\$856,170.10
200 <u>Personnel Services – Employee Benefits</u>				
210 Group Insurance – Contracted Provider				1,501.14
220 Social Security Contributions				64,266.15
230 PSERS Retirement Contributions				217,904.74
250 Unemployment Compensation				561.90
260 Workers' Compensation				5,502.55
270 Group Insurance – Self-Insurance				241,461.30
290 Other Current Employee Benefits				2,646.00
Total Personnel Services – Employee Benefits				\$533,843.78
300 <u>Purchased Professional and Technical Services</u>				
324 Professional Educational Services – Employee Training and Development Services				300.00
340 Technical Services				128,979.35
Total Purchased Professional and Technical Services				\$129,279.35
400 <u>Purchased Property Services</u>				
410 Cleaning Services				1,018.40
430 Repairs and Maintenance Services				75,826.48
440 Rentals				949,899.30
Total Purchased Property Services				\$1,026,744.18
500 <u>Other Purchased Services</u>				
530 Communications				127,484.87
550 Printing and Binding				13.23
580 Travel				4,250.00
Total Other Purchased Services				\$131,748.10
600 <u>Supplies</u>				
610 General Supplies				281,711.30
640 Books and Periodicals				68,606.70
650 Supplies & Fees – Technology Related				161,651.25
Total Supplies				\$511,969.25
700 <u>Property</u>				
750 Equipment – Original and Additional				84,474.21
760 Equipment – Replacement				22,223.57
Total Property				\$106,697.78
800 <u>Other Objects</u>				
810 Dues and Fees				670.32
Total Other Objects				\$670.32
Total 2810 Planning, Research, Development and Evaluation Services				\$3,297,122.86

LEA : 123467303 Spring-Ford Area SD

Printed 9/27/2017 10:57:12 AM

General Fund (10)				
2820 Information Services	<u>Elementary</u>	<u>Secondary</u>	<u>Federal</u>	<u>Total</u>
100 <u>Personnel Services – Salaries</u>				
100 Personnel Services – Salaries				2,692.25
Total Personnel Services – Salaries				\$2,692.25
200 <u>Personnel Services – Employee Benefits</u>				
220 Social Security Contributions				209.67
230 PSERS Retirement Contributions				695.68
250 Unemployment Compensation				1.77
260 Workers' Compensation				17.30
Total Personnel Services – Employee Benefits				\$924.42
500 <u>Other Purchased Services</u>				
530 Communications				163.63
550 Printing and Binding				13.24
580 Travel				178.14
Total Other Purchased Services				\$355.01
600 <u>Supplies</u>				
650 Supplies & Fees – Technology Related				66.50
Total Supplies				\$66.50
Total 2820 Information Services				\$4,038.18

LEA : 123467303 Spring-Ford Area SD

Printed 9/27/2017 10:57:12 AM

General Fund (10)

2821 Supervision of Information Services	<u>Elementary</u>	<u>Secondary</u>	<u>Federal</u>	<u>Total</u>
600 <u>Supplies</u>				
650 Supplies & Fees – Technology Related				66.50
Total Supplies				\$66.50
Total 2821 Supervision of Information Services				\$66.50

LEA : 123467303 Spring-Ford Area SD

Printed 9/27/2017 10:57:12 AM

General Fund (10)

2829 Other Information Services	<u>Elementary</u>	<u>Secondary</u>	<u>Federal</u>	<u>Total</u>
100 <u>Personnel Services – Salaries</u>				
100 Personnel Services – Salaries				2,692.25
Total Personnel Services – Salaries				\$2,692.25
200 <u>Personnel Services – Employee Benefits</u>				
220 Social Security Contributions				209.67
230 PSERS Retirement Contributions				695.68
250 Unemployment Compensation				1.77
260 Workers' Compensation				17.30
Total Personnel Services – Employee Benefits				\$924.42
500 <u>Other Purchased Services</u>				
530 Communications				163.63
550 Printing and Binding				13.24
580 Travel				178.14
Total Other Purchased Services				\$355.01
Total 2829 Other Information Services				\$3,971.68

LEA : 123467303 Spring-Ford Area SD

Printed 9/27/2017 10:57:12 AM

General Fund (10)				
2830 Staff Services				
	<u>Elementary</u>	<u>Secondary</u>	<u>Federal</u>	<u>Total</u>
100 <u>Personnel Services – Salaries</u>				
100 Personnel Services – Salaries				226,990.89
Total Personnel Services – Salaries				\$226,990.89
200 <u>Personnel Services – Employee Benefits</u>				
210 Group Insurance – Contracted Provider				467.04
220 Social Security Contributions				16,308.91
230 PSERS Retirement Contributions				57,511.12
240 Tuition Reimbursement				79,318.00
250 Unemployment Compensation				148.98
260 Workers' Compensation				1,458.86
270 Group Insurance – Self-Insurance				21,069.58
Total Personnel Services – Employee Benefits				\$176,282.49
300 <u>Purchased Professional and Technical Services</u>				
322 Professional Educational Services – Ius				1,025.00
324 Professional Educational Services – Employee Training and Development Services				7,560.62
330 Other Professional Services				51,828.87
340 Technical Services				15,776.65
Total Purchased Professional and Technical Services				\$76,191.14
500 <u>Other Purchased Services</u>				
530 Communications				1,695.74
549 Other Advertising/Public Relations				1,573.75
580 Travel				8,303.16
Total Other Purchased Services				\$11,572.65
600 <u>Supplies</u>				
610 General Supplies				3,800.99
Total Supplies				\$3,800.99
800 <u>Other Objects</u>				
810 Dues and Fees				353.75
890 Miscellaneous Expenditures				35.00
Total Other Objects				\$388.75
Total 2830 Staff Services				\$495,226.91

LEA : 123467303 Spring-Ford Area SD

Printed 9/27/2017 10:57:12 AM

General Fund (10)

2831 Supervision of Staff Services	Elementary	Secondary	Federal	Total
100 <u>Personnel Services – Salaries</u>				
100 Personnel Services – Salaries				226,990.89
Total Personnel Services – Salaries				\$226,990.89
200 <u>Personnel Services – Employee Benefits</u>				
210 Group Insurance – Contracted Provider				467.04
220 Social Security Contributions				16,308.91
230 PSERS Retirement Contributions				57,511.12
250 Unemployment Compensation				148.98
260 Workers' Compensation				1,458.86
270 Group Insurance – Self-Insurance				21,069.58
Total Personnel Services – Employee Benefits				\$96,964.49
300 <u>Purchased Professional and Technical Services</u>				
322 Professional Educational Services – Ius				1,025.00
324 Professional Educational Services – Employee Training and Development Services				569.47
330 Other Professional Services				51,828.87
340 Technical Services				15,776.65
Total Purchased Professional and Technical Services				\$69,199.99
500 <u>Other Purchased Services</u>				
530 Communications				1,695.74
549 Other Advertising/Public Relations				1,573.75
580 Travel				287.76
Total Other Purchased Services				\$3,557.25
600 <u>Supplies</u>				
610 General Supplies				3,800.99
Total Supplies				\$3,800.99
800 <u>Other Objects</u>				
810 Dues and Fees				353.75
890 Miscellaneous Expenditures				35.00
Total Other Objects				\$388.75
Total 2831 Supervision of Staff Services				\$400,902.36

LEA : 123467303 Spring-Ford Area SD

Printed 9/27/2017 10:57:12 AM

General Fund (10)				
2834 Staff Development Services – Non-Instructional, Certified Staff Only	<u>Elementary</u>	<u>Secondary</u>	<u>Federal</u>	<u>Total</u>
200 <u>Personnel Services – Employee Benefits</u>				
240 Tuition Reimbursement				71,970.00
Total Personnel Services – Employee Benefits				\$71,970.00
300 <u>Purchased Professional and Technical Services</u>				
324 Professional Educational Services – Employee Training and Development Services				2,720.00
Total Purchased Professional and Technical Services				\$2,720.00
500 <u>Other Purchased Services</u>				
580 Travel				3,142.46
Total Other Purchased Services				\$3,142.46
Total 2834 Staff Development Services – Non-Instructional, Certified Staff Only				\$77,832.46

LEA : 123467303 Spring-Ford Area SD

Printed 9/27/2017 10:57:12 AM

General Fund (10)				
2836 Staff Development Services – Non-Instructional, Non-Certified Staff Only	<u>Elementary</u>	<u>Secondary</u>	<u>Federal</u>	<u>Total</u>
200 <u>Personnel Services – Employee Benefits</u>				
240 Tuition Reimbursement				7,348.00
Total Personnel Services – Employee Benefits				\$7,348.00
300 <u>Purchased Professional and Technical Services</u>				
324 Professional Educational Services – Employee Training and Development Services				4,271.15
Total Purchased Professional and Technical Services				\$4,271.15
500 <u>Other Purchased Services</u>				
580 Travel				4,872.94
Total Other Purchased Services				\$4,872.94
Total 2836 Staff Development Services – Non-Instructional, Non-Certified Staff Only				\$16,492.09

LEA : 123467303 Spring-Ford Area SD

Printed 9/27/2017 10:57:12 AM

General Fund (10)

2900 Other Support Services

Elementary Secondary Federal Total

500 Other Purchased Services

595 IU Payments By Withholding 122,807.03

596 Direct Payments To Intermediate Units 8,677.00

Total Other Purchased Services \$131,484.03

Total 2900 Other Support Services \$131,484.03

LEA : 123467303 Spring-Ford Area SD

Printed 9/27/2017 10:57:12 AM

General Fund (10)

2910 Support Services Not Listed Elsewhere In the 2000 Series

Elementary Secondary Federal Total

500 <u>Other Purchased Services</u>				
595 IU Payments By Withholding				122,807.03
596 Direct Payments To Intermediate Units				8,677.00
Total Other Purchased Services				\$131,484.03
Total 2910 Support Services Not Listed Elsewhere In the 2000 Series				\$131,484.03

LEA : 123467303 Spring-Ford Area SD

Printed 9/27/2017 10:57:15 AM

General Fund (10)

3000 Operation of Non-Instructional Services	<u>Total</u>
100 <u>Personnel Services – Salaries</u>	
100 Personnel Services – Salaries	1,188,035.67
Total Personnel Services – Salaries	\$1,188,035.67
200 <u>Personnel Services – Employee Benefits</u>	
210 Group Insurance – Contracted Provider	735.48
220 Social Security Contributions	89,000.58
230 PSERS Retirement Contributions	268,764.00
250 Unemployment Compensation	779.75
260 Workers’ Compensation	7,635.49
270 Group Insurance – Self-Insurance	93,975.75
Total Personnel Services – Employee Benefits	\$460,891.05
300 <u>Purchased Professional and Technical Services</u>	
324 Professional Educational Services – Employee Training and Development Services	350.00
329 Professional Educational Services – Other	47,003.50
330 Other Professional Services	10,583.15
350 Security / Safety Services	31,191.00
Total Purchased Professional and Technical Services	\$89,127.65
400 <u>Purchased Property Services</u>	
420 Utility Services	1,449.38
430 Repairs and Maintenance Services	30,646.24
440 Rentals	19,625.85
Total Purchased Property Services	\$51,721.47
500 <u>Other Purchased Services</u>	
510 Student Transportation Services	149,547.89
520 Insurance – General	16,411.00
530 Communications	2,974.86
550 Printing and Binding	1,854.61
580 Travel	7,070.77
Total Other Purchased Services	\$177,859.13
600 <u>Supplies</u>	
610 General Supplies	108,702.46
620 Energy	5.71
630 Food	2,025.50
640 Books and Periodicals	7,481.23
650 Supplies & Fees – Technology Related	49.00
Total Supplies	\$118,263.90
700 <u>Property</u>	
750 Equipment – Original and Additional	50,384.48
760 Equipment – Replacement	2,287.40
Total Property	\$52,671.88
800 <u>Other Objects</u>	
810 Dues and Fees	18,777.16

LEA : 123467303 Spring-Ford Area SD

Printed 9/27/2017 10:57:15 AM

General Fund (10)	
3000 Operation of Non-Instructional Services	<u>Total</u>
800 <u>Other Objects</u>	
890 Miscellaneous Expenditures	4,427.00
Total Other Objects	\$23,204.16
Total 3000 Operation of Non-Instructional Services	\$2,161,774.91

LEA : 123467303 Spring-Ford Area SD

Printed 9/27/2017 10:57:15 AM

General Fund (10)

3200 Student Activities

	Elementary	Secondary	Federal	Total
100 <u>Personnel Services – Salaries</u>				
100 Personnel Services – Salaries				1,151,580.67
Total Personnel Services – Salaries				\$1,151,580.67
200 <u>Personnel Services – Employee Benefits</u>				
210 Group Insurance – Contracted Provider				735.48
220 Social Security Contributions				86,217.01
230 PSERS Retirement Contributions				260,044.36
250 Unemployment Compensation				755.82
260 Workers' Compensation				7,401.19
270 Group Insurance – Self-Insurance				93,975.75
Total Personnel Services – Employee Benefits				\$449,129.61
300 <u>Purchased Professional and Technical Services</u>				
329 Professional Educational Services – Other				47,003.50
330 Other Professional Services				10,498.00
350 Security / Safety Services				31,191.00
Total Purchased Professional and Technical Services				\$88,692.50
400 <u>Purchased Property Services</u>				
420 Utility Services				1,449.38
430 Repairs and Maintenance Services				30,646.24
440 Rentals				19,625.85
Total Purchased Property Services				\$51,721.47
500 <u>Other Purchased Services</u>				
510 Student Transportation Services			392.67	149,547.89
520 Insurance – General				16,411.00
530 Communications				2,974.86
550 Printing and Binding				1,854.61
580 Travel				4,796.20
Total Other Purchased Services			\$392.67	\$175,584.56
600 <u>Supplies</u>				
610 General Supplies				83,740.77
620 Energy				5.71
630 Food				2,025.50
640 Books and Periodicals				7,481.23
650 Supplies & Fees – Technology Related				49.00
Total Supplies				\$93,302.21
700 <u>Property</u>				
750 Equipment – Original and Additional				50,384.48
760 Equipment – Replacement				2,287.40
Total Property				\$52,671.88
800 <u>Other Objects</u>				
810 Dues and Fees				18,777.16

LEA : 123467303 Spring-Ford Area SD

Printed 9/27/2017 10:57:15 AM

General Fund (10)				
3200 Student Activities	<u>Elementary</u>	<u>Secondary</u>	<u>Federal</u>	<u>Total</u>
800 <u>Other Objects</u>				
890 Miscellaneous Expenditures				4,427.00
Total Other Objects				\$23,204.16
Total 3200 Student Activities			\$392.67	\$2,085,887.06

LEA : 123467303 Spring-Ford Area SD

Printed 9/27/2017 10:57:15 AM

General Fund (10)				
3300 Community Services	<u>Elementary</u>	<u>Secondary</u>	<u>Federal</u>	<u>Total</u>
100 <u>Personnel Services – Salaries</u>				
100 Personnel Services – Salaries				36,455.00
Total Personnel Services – Salaries				\$36,455.00
200 <u>Personnel Services – Employee Benefits</u>				
220 Social Security Contributions				2,783.57
230 PSERS Retirement Contributions				8,719.64
250 Unemployment Compensation				23.93
260 Workers' Compensation				234.30
Total Personnel Services – Employee Benefits				\$11,761.44
300 <u>Purchased Professional and Technical Services</u>				
324 Professional Educational Services – Employee Training and Development Services				350.00
330 Other Professional Services				85.15
Total Purchased Professional and Technical Services				\$435.15
500 <u>Other Purchased Services</u>				
580 Travel				2,274.57
Total Other Purchased Services				\$2,274.57
600 <u>Supplies</u>				
610 General Supplies				24,961.69
Total Supplies				\$24,961.69
Total 3300 Community Services				\$75,887.85

LEA : 123467303 Spring-Ford Area SD

Printed 9/27/2017 10:57:16 AM

General Fund (10)

4000 Facilities Acquisition, Construction and Improvement Services		<u>Total</u>
300 <u>Purchased Professional and Technical Services</u>		
330 Other Professional Services	7,250.00	
Total Purchased Professional and Technical Services		\$7,250.00
400 <u>Purchased Property Services</u>		
430 Repairs and Maintenance Services	97,818.57	
Total Purchased Property Services		\$97,818.57
700 <u>Property</u>		
710 Land and Improvements	17,445.00	
760 Equipment – Replacement	30,362.93	
780 Infrastructure Assets	86,671.17	
Total Property		\$134,479.10
Total 4000 Facilities Acquisition, Construction and Improvement Services		\$239,547.67

LEA : 123467303 Spring-Ford Area SD

Printed 9/27/2017 10:57:16 AM

General Fund (10)

4200 Existing Site Improvement Services	<u>Elementary</u>	<u>Secondary</u>	<u>Federal</u>	<u>Total</u>
400 <u>Purchased Property Services</u>				
430 Repairs and Maintenance Services				14,130.00
Total Purchased Property Services				\$14,130.00
700 <u>Property</u>				
710 Land and Improvements				17,445.00
Total Property				\$17,445.00
Total 4200 Existing Site Improvement Services				\$31,575.00

LEA : 123467303 Spring-Ford Area SD

Printed 9/27/2017 10:57:16 AM

General Fund (10)

4300 Architecture and Engineering Services / Educational Specifications Development – Original and Additional	<u>Elementary</u>	<u>Secondary</u>	<u>Federal</u>	<u>Total</u>
300 <u>Purchased Professional and Technical Services</u>				
330 Other Professional Services				7,250.00
Total Purchased Professional and Technical Services				\$7,250.00
Total 4300 Architecture and Engineering Services / Educational Specifications Development – Original and Additional				\$7,250.00

LEA : 123467303 Spring-Ford Area SD

Printed 9/27/2017 10:57:16 AM

General Fund (10)				
4600 Existing Building Improvement Services	<u>Elementary</u>	<u>Secondary</u>	<u>Federal</u>	<u>Total</u>
400 <u>Purchased Property Services</u>				
430 Repairs and Maintenance Services				83,688.57
Total Purchased Property Services				\$83,688.57
700 <u>Property</u>				
760 Equipment – Replacement				30,362.93
780 Infrastructure Assets				86,671.17
Total Property				\$117,034.10
Total 4600 Existing Building Improvement Services				\$200,722.67

LEA : 123467303 Spring-Ford Area SD

Printed 9/27/2017 10:57:17 AM

General Fund (10)

5000 Other Expenditures and Financing Uses

Total

800 Other Objects

830 Interest	4,176,137.07
880 Refunds of Prior Years' Receipts	106.46

Total Other Objects	\$4,176,243.53
----------------------------	-----------------------

900 Other Uses of Funds

910 Redemption of Principal	9,660,000.00
930 Fund Transfers	15,469.85
932 Capital Reserve Fund Transfers Applicable To Fund 32	1,909,953.00

Total Other Uses of Funds	\$11,585,422.85
----------------------------------	------------------------

Total 5000 Other Expenditures and Financing Uses	\$15,761,666.38
---	------------------------

LEA : 123467303 Spring-Ford Area SD

Printed 9/27/2017 10:57:17 AM

General Fund (10)

5100 Debt Service / Other Expenditures and Financing Uses	<u>Elementary</u>	<u>Secondary</u>	<u>Federal</u>	<u>Total</u>
800 <u>Other Objects</u>				
830 Interest				4,176,137.07
880 Refunds of Prior Years' Receipts				106.46
Total Other Objects				\$4,176,243.53
900 <u>Other Uses of Funds</u>				
910 Redemption of Principal				9,660,000.00
Total Other Uses of Funds				\$9,660,000.00
Total 5100 Debt Service / Other Expenditures and Financing Uses				\$13,836,243.53

LEA : 123467303 Spring-Ford Area SD

Printed 9/27/2017 10:57:17 AM

General Fund (10)

5110 Debt Service	<u>Elementary</u>	<u>Secondary</u>	<u>Federal</u>	<u>Total</u>
800 <u>Other Objects</u>				
830 Interest				4,176,137.07
Total Other Objects				\$4,176,137.07
900 <u>Other Uses of Funds</u>				
910 Redemption of Principal				9,660,000.00
Total Other Uses of Funds				\$9,660,000.00
Total 5110 Debt Service				\$13,836,137.07

LEA : 123467303 Spring-Ford Area SD

Printed 9/27/2017 10:57:17 AM

General Fund (10)

5130 Refund of Prior Year Revenues / Receipts	<u>Elementary</u>	<u>Secondary</u>	<u>Federal</u>	<u>Total</u>
800 <u>Other Objects</u>				
880 Refunds of Prior Years' Receipts				106.46
Total Other Objects				\$106.46
Total 5130 Refund of Prior Year Revenues / Receipts				\$106.46

LEA : 123467303 Spring-Ford Area SD

Printed 9/27/2017 10:57:17 AM

General Fund (10)

5200 Interfund Transfers – Out	<u>Elementary</u>	<u>Secondary</u>	<u>Federal</u>	<u>Total</u>
900 <u>Other Uses of Funds</u>				
930 Fund Transfers				15,469.85
932 Capital Reserve Fund Transfers Applicable To Fund 32				1,909,953.00
Total Other Uses of Funds				\$1,925,422.85
Total 5200 Interfund Transfers – Out				\$1,925,422.85

LEA : 123467303 Spring-Ford Area SD

Printed 9/27/2017 10:57:17 AM

General Fund (10)				
5230 Capital Projects Fund Transfers	<u>Elementary</u>	<u>Secondary</u>	<u>Federal</u>	<u>Total</u>
900 <u>Other Uses of Funds</u>				
932 Capital Reserve Fund Transfers Applicable To Fund 32				1,909,953.00
Total Other Uses of Funds				\$1,909,953.00
Total 5230 Capital Projects Fund Transfers				\$1,909,953.00

LEA : 123467303 Spring-Ford Area SD

Printed 9/27/2017 10:57:17 AM

General Fund (10)

5250 Enterprise Fund Transfers	<u>Elementary</u>	<u>Secondary</u>	<u>Federal</u>	<u>Total</u>
900 <u>Other Uses of Funds</u>				
930 Fund Transfers				15,469.85
Total Other Uses of Funds				\$15,469.85
Total 5250 Enterprise Fund Transfers				\$15,469.85

LEA : 123467303 Spring-Ford Area SD

Printed 9/27/2017 10:57:14 AM

Capital Reserve Fund - § 1431 (32)

		<u>Total</u>
2000 Support Services		
300	<u>Purchased Professional and Technical Services</u>	
330	Other Professional Services	5,797.14
340	Technical Services	11,430.00
Total Purchased Professional and Technical Services		\$17,227.14
400	<u>Purchased Property Services</u>	
440	Rentals	90,071.04
Total Purchased Property Services		\$90,071.04
600	<u>Supplies</u>	
650	Supplies & Fees – Technology Related	4,317.12
Total Supplies		\$4,317.12
700	<u>Property</u>	
750	Equipment – Original and Additional	93,635.56
760	Equipment – Replacement	125,433.27
Total Property		\$219,068.83
Total 2000 Support Services		\$330,684.13

LEA : 123467303 Spring-Ford Area SD

Printed 9/27/2017 10:57:14 AM

Capital Reserve Fund - § 1431 (32)

2200 Support Services – Instructional Staff

	<u>Elementary</u>	<u>Secondary</u>	<u>Federal</u>	<u>Total</u>
700 <u>Property</u>				
760 Equipment – Replacement	23,730.81	18,645.64		42,376.45
Total Property	\$23,730.81	\$18,645.64		\$42,376.45
Total 2200 Support Services – Instructional Staff	\$23,730.81	\$18,645.64		\$42,376.45

LEA : 123467303 Spring-Ford Area SD

Printed 9/27/2017 10:57:14 AM

Capital Reserve Fund - § 1431 (32)

2250 School Library Services

	<u>Elementary</u>	<u>Secondary</u>	<u>Federal</u>	<u>Total</u>
700 <u>Property</u>				
760 Equipment – Replacement	23,730.81	18,645.64		42,376.45
Total Property	\$23,730.81	\$18,645.64		\$42,376.45
Total 2250 School Library Services	\$23,730.81	\$18,645.64		\$42,376.45

LEA : 123467303 Spring-Ford Area SD

Printed 9/27/2017 10:57:14 AM

Capital Reserve Fund - § 1431 (32)

2500 Support Services – Business

	<u>Elementary</u>	<u>Secondary</u>	<u>Federal</u>	<u>Total</u>
700 <u>Property</u>				
750 Equipment – Original and Additional				35,840.59
Total Property				\$35,840.59
Total 2500 Support Services – Business				\$35,840.59

LEA : 123467303 Spring-Ford Area SD

Printed 9/27/2017 10:57:14 AM

Capital Reserve Fund - § 1431 (32)

2520 Purchasing Services

<u>Elementary</u>	<u>Secondary</u>	<u>Federal</u>	<u>Total</u>
-------------------	------------------	----------------	--------------

700 Property

750 Equipment – Original and Additional			35,840.59
---	--	--	-----------

Total Property			\$35,840.59
-----------------------	--	--	--------------------

Total 2520 Purchasing Services			\$35,840.59
---------------------------------------	--	--	--------------------

LEA : 123467303 Spring-Ford Area SD

Printed 9/27/2017 10:57:14 AM

Capital Reserve Fund - § 1431 (32)

2600 Operation and Maintenance of Plant Services

Elementary Secondary Federal Total

300 Purchased Professional and Technical Services

330 Other Professional Services 5,797.14

Total Purchased Professional and Technical Services \$5,797.14

700 Property

760 Equipment – Replacement 83,056.82

Total Property \$83,056.82

Total 2600 Operation and Maintenance of Plant Services \$88,853.96

LEA : 123467303 Spring-Ford Area SD

Printed 9/27/2017 10:57:14 AM

Capital Reserve Fund - § 1431 (32)

2620 Operation of Buildings Services

<u>Elementary</u>	<u>Secondary</u>	<u>Federal</u>	<u>Total</u>
-------------------	------------------	----------------	--------------

700 Property

760 Equipment – Replacement			59,688.82
-----------------------------	--	--	-----------

Total Property			\$59,688.82
-----------------------	--	--	--------------------

Total 2620 Operation of Buildings Services			\$59,688.82
---	--	--	--------------------

LEA : 123467303 Spring-Ford Area SD

Printed 9/27/2017 10:57:14 AM

Capital Reserve Fund - § 1431 (32)

2630 Care and Upkeep of Grounds Services

Elementary

Secondary

Federal

Total

300 Purchased Professional and Technical Services

330 Other Professional Services

5,797.14

Total Purchased Professional and Technical Services

\$5,797.14

Total 2630 Care and Upkeep of Grounds Services

\$5,797.14

LEA : 123467303 Spring-Ford Area SD

Printed 9/27/2017 10:57:14 AM

Capital Reserve Fund - § 1431 (32)

2650 Vehicle Operation and Maintenance Services (Other Than Student Transportation Vehicles)	<u>Elementary</u>	<u>Secondary</u>	<u>Federal</u>	<u>Total</u>
700 <u>Property</u>				
760 Equipment – Replacement				23,368.00
Total Property				\$23,368.00
Total 2650 Vehicle Operation and Maintenance Services (Other Than Student Transportation Vehicles)				\$23,368.00

LEA : 123467303 Spring-Ford Area SD

Printed 9/27/2017 10:57:14 AM

Capital Reserve Fund - § 1431 (32)

2700 Student Transportation Services

<u>Elementary</u>	<u>Secondary</u>	<u>Federal</u>	<u>Total</u>
-------------------	------------------	----------------	--------------

700 <u>Property</u>				
750 Equipment – Original and Additional				40,807.00
Total Property				\$40,807.00
Total 2700 Student Transportation Services				\$40,807.00

LEA : 123467303 Spring-Ford Area SD

Printed 9/27/2017 10:57:14 AM

Capital Reserve Fund - § 1431 (32)

2720 Vehicle Operation Services

	<u>Elementary</u>	<u>Secondary</u>	<u>Federal</u>	<u>Total</u>
700 <u>Property</u>				
750 Equipment – Original and Additional				40,807.00
Total Property				\$40,807.00
Total 2720 Vehicle Operation Services				\$40,807.00

LEA : 123467303 Spring-Ford Area SD

Printed 9/27/2017 10:57:14 AM

Capital Reserve Fund - § 1431 (32)

2800 Support Services – Central

Elementary Secondary Federal Total

300 <u>Purchased Professional and Technical Services</u>				
340 Technical Services				11,430.00
Total Purchased Professional and Technical Services				\$11,430.00
400 <u>Purchased Property Services</u>				
440 Rentals				90,071.04
Total Purchased Property Services				\$90,071.04
600 <u>Supplies</u>				
650 Supplies & Fees – Technology Related				4,317.12
Total Supplies				\$4,317.12
700 <u>Property</u>				
750 Equipment – Original and Additional				16,987.97
Total Property				\$16,987.97
Total 2800 Support Services – Central				\$122,806.13

LEA : 123467303 Spring-Ford Area SD

Printed 9/27/2017 10:57:14 AM

Capital Reserve Fund - § 1431 (32)

2810 Planning, Research, Development and Evaluation Services	<u>Elementary</u>	<u>Secondary</u>	<u>Federal</u>	<u>Total</u>
300 <u>Purchased Professional and Technical Services</u>				
340 Technical Services				11,430.00
Total Purchased Professional and Technical Services				\$11,430.00
400 <u>Purchased Property Services</u>				
440 Rentals				90,071.04
Total Purchased Property Services				\$90,071.04
600 <u>Supplies</u>				
650 Supplies & Fees – Technology Related				4,317.12
Total Supplies				\$4,317.12
700 <u>Property</u>				
750 Equipment – Original and Additional				16,987.97
Total Property				\$16,987.97
Total 2810 Planning, Research, Development and Evaluation Services				\$122,806.13

LEA : 123467303 Spring-Ford Area SD

Printed 9/27/2017 10:57:17 AM

Capital Reserve Fund - § 1431 (32)

4000 Facilities Acquisition, Construction and Improvement Services	<u>Total</u>
300 <u>Purchased Professional and Technical Services</u>	
330 Other Professional Services	36,333.24
Total Purchased Professional and Technical Services	\$36,333.24
400 <u>Purchased Property Services</u>	
450 Construction Services	825,150.26
Total Purchased Property Services	\$825,150.26
700 <u>Property</u>	
750 Equipment – Original and Additional	193,857.10
760 Equipment – Replacement	83,209.07
780 Infrastructure Assets	13,783.56
Total Property	\$290,849.73
Total 4000 Facilities Acquisition, Construction and Improvement Services	\$1,152,333.23

LEA : 123467303 Spring-Ford Area SD

Printed 9/27/2017 10:57:17 AM

Capital Reserve Fund - § 1431 (32)

4200 Existing Site Improvement Services

<u>Elementary</u>	<u>Secondary</u>	<u>Federal</u>	<u>Total</u>
-------------------	------------------	----------------	--------------

300 Purchased Professional and Technical Services

330 Other Professional Services			11,333.24
---------------------------------	--	--	-----------

Total Purchased Professional and Technical Services			\$11,333.24
--	--	--	--------------------

Total 4200 Existing Site Improvement Services			\$11,333.24
--	--	--	--------------------

LEA : 123467303 Spring-Ford Area SD

Printed 9/27/2017 10:57:17 AM

Capital Reserve Fund - § 1431 (32)

4400 Architecture and Engineering Services / Educational Specifications – Improvements

Elementary

Secondary

Federal

Total

300 Purchased Professional and Technical Services

330 Other Professional Services

25,000.00

Total Purchased Professional and Technical Services

\$25,000.00

Total 4400 Architecture and Engineering Services / Educational Specifications – Improvements

\$25,000.00

4600 Existing Building Improvement Services

Total

450 Construction Services

825,150.26

\$825,150.26

193,857.10

83,209.07

13,783.56

\$290,849.73

\$1,115,999.99

LEA : 123467303 Spring-Ford Area SD

Printed 9/27/2017 10:57:18 AM

Other Capital Projects Fund (39)

5000 Other Expenditures and Financing Uses

Total

800	<u>Other Objects</u>	
830	Interest	8,967.29
Total Other Objects		\$8,967.29
900	<u>Other Uses of Funds</u>	
910	Redemption of Principal	7,046,032.71
Total Other Uses of Funds		\$7,046,032.71
Total 5000 Other Expenditures and Financing Uses		\$7,055,000.00

LEA : 123467303 Spring-Ford Area SD

Printed 9/27/2017 10:57:18 AM

Other Capital Projects Fund (39)

5100 Debt Service / Other Expenditures and Financing Uses	<u>Elementary</u>	<u>Secondary</u>	<u>Federal</u>	<u>Total</u>
800 <u>Other Objects</u>				
830 Interest				8,967.29
Total Other Objects				\$8,967.29
900 <u>Other Uses of Funds</u>				
910 Redemption of Principal				7,046,032.71
Total Other Uses of Funds				\$7,046,032.71
Total 5100 Debt Service / Other Expenditures and Financing Uses				\$7,055,000.00

LEA : 123467303 Spring-Ford Area SD

Printed 9/27/2017 10:57:18 AM

Other Capital Projects Fund (39)

5120 Debt Service – Refunded Bonds	<u>Elementary</u>	<u>Secondary</u>	<u>Federal</u>	<u>Total</u>
800 <u>Other Objects</u>				
830 Interest				8,967.29
Total Other Objects				\$8,967.29
900 <u>Other Uses of Funds</u>				
910 Redemption of Principal				7,046,032.71
Total Other Uses of Funds				\$7,046,032.71
Total 5120 Debt Service – Refunded Bonds				\$7,055,000.00

LEA : 123467303 Spring-Ford Area SD

Printed 9/27/2017 10:57:20 AM

	<u>General Fund(10)</u>	<u>Public Purpose Trust(27)</u>	<u>Other Compt Approved</u> <u>(28)</u>	<u>Athletic / Activity(29)</u>	<u>Capital Reserve (690.</u> <u>1850)(31)</u>
1000 <u>Instruction</u>					
1100 Regular Programs - Elementary / Secondary	52,478,393.60				
1200 Special Programs - Elementary / Secondary	26,173,917.26				
1300 Vocational Education	2,659,011.85				
1400 Other Instructional Programs - Elementary / Secondary	55,945.63				
1500 Nonpublic School Programs	1,564.10				
Total Instruction	\$81,368,832.44				
2000 <u>Support Services</u>					
2100 Support Services - Students	4,852,164.44				
2200 Support Services - Instructional Staff	4,731,687.77				
2300 Support Services - Administration	6,940,028.47				
2400 Support Services - Pupil Health	2,110,534.65				
2500 Support Services - Business	1,077,860.53				
2600 Operation and Maintenance of Plant Services	10,022,958.85				
2700 Student Transportation Services	7,002,969.42				
2800 Support Services - Central	3,796,387.95				
2900 Other Support Services	131,484.03				
Total Support Services	\$40,666,076.11				
3000 <u>Operation of Non-Instructional Services</u>					
3200 Student Activities	2,085,887.06				
3300 Community Services	75,887.85				
Total Operation of Non-Instructional Services	\$2,161,774.91				
4000 <u>Facilities Acquisition, Construction and Improvement Services</u>					
4200 Existing Site Improvement Services	31,575.00				
4300 Architecture and Engineering Services / Educational Specifications Development - Original and Additional	7,250.00				
4400 Architecture and Engineering Services / Educational Specifications - Improvements					
4600 Existing Building Improvement Services	200,722.67				
Total Facilities Acquisition, Construction and Improvement Services	\$239,547.67				
5000 <u>Other Expenditures and Financing Uses</u>					
5100 Debt Service / Other Expenditures and Financing Uses	13,836,243.53				
5200 Interfund Transfers - Out	1,925,422.85				
Total Other Expenditures and Financing Uses	\$15,761,666.38				
TOTAL ACTUAL EXPENDITURES & OTHER FINANCING USES	\$140,197,897.51				

LEA : 123467303 Spring-Ford Area SD

Printed 9/27/2017 10:57:20 AM

	<u>Capital Reserve (1431)(32)</u>	<u>Other Capital Projects Fund(39)</u>	<u>Debt Service(40)</u>	<u>Permanent(90)</u>	<u>Total</u>
1000 <u>Instruction</u>					
1100 Regular Programs - Elementary / Secondary					52,478,393.60
1200 Special Programs - Elementary / Secondary					26,173,917.26
1300 Vocational Education					2,659,011.85
1400 Other Instructional Programs - Elementary / Secondary					55,945.63
1500 Nonpublic School Programs					1,564.10
Total Instruction					\$81,368,832.44
2000 <u>Support Services</u>					
2100 Support Services - Students					4,852,164.44
2200 Support Services - Instructional Staff	42,376.45				4,774,064.22
2300 Support Services - Administration					6,940,028.47
2400 Support Services - Pupil Health					2,110,534.65
2500 Support Services - Business	35,840.59				1,113,701.12
2600 Operation and Maintenance of Plant Services	88,853.96				10,111,812.81
2700 Student Transportation Services	40,807.00				7,043,776.42
2800 Support Services - Central	122,806.13				3,919,194.08
2900 Other Support Services					131,484.03
Total Support Services	\$330,684.13				\$40,996,760.24
3000 <u>Operation of Non-Instructional Services</u>					
3200 Student Activities					2,085,887.06
3300 Community Services					75,887.85
Total Operation of Non-Instructional Services					\$2,161,774.91
4000 <u>Facilities Acquisition, Construction and Improvement Services</u>					
4200 Existing Site Improvement Services	11,333.24				42,908.24
4300 Architecture and Engineering Services / Educational Specifications Development - Original and Additional					7,250.00
4400 Architecture and Engineering Services / Educational Specifications - Improvements	25,000.00				25,000.00
4600 Existing Building Improvement Services	1,115,999.99				1,316,722.66
Total Facilities Acquisition, Construction and Improvement Services	\$1,152,333.23				\$1,391,880.90
5000 <u>Other Expenditures and Financing Uses</u>					
5100 Debt Service / Other Expenditures and Financing Uses		7,055,000.00			20,891,243.53
5200 Interfund Transfers - Out					1,925,422.85
Total Other Expenditures and Financing Uses		\$7,055,000.00			\$22,816,666.38
TOTAL ACTUAL EXPENDITURES & OTHER FINANCING USES	\$1,483,017.36	\$7,055,000.00			\$148,735,914.87

LEA : 123467303 Spring-Ford Area SD

Printed 9/27/2017 10:57:23 AM

PSERS Salary Data (Salary Data should relate to the General Fund only)

Amount	Description	Amount
	Total Salary Base for salaries subject to PSERS withholding	57,849,227.23
	Total Federally Funded salaries subject to PSERS withholding	576,750.39

Title I Expenditure Data

Amount	Description	Amount
	Expenditures Funded with Current Title I Funds	262,816.00
	Expenditures Funded with Carry over Title I Funds	
Total	Title I Expenditure Data	\$262,816.00

Title I ARRA Amount

Amount	Description	Amount
	Portion of Total Title I Expenditures funded with ARRA Title I	

Benefits for Staff Relative to Collective Bargaining Agreements

	OBJECT	COVERED	NOT COVERED	TOTAL
10 General Fund				
	211 Medical Insurance			
	212 Dental Insurance			
	215 Eye Care Insurance			
	216 Prescription Insurance			
	271 Self-Insurance Medical Benefits	6,850,064.40	2,228,526.21	9,078,590.61
	272 Self-Insurance Dental Benefits	430,704.89	223,541.62	654,246.51
	275 Self-Insurance Eye Care Benefits	123,219.52	24,402.64	147,622.16
	276 Self-Insurance Prescription Benefits	1,970,009.23	1,445,867.70	3,415,876.93
	FUND TOTAL	\$9,373,998.04	\$3,922,338.17	\$13,296,336.21
50 Enterprise Fund				
	211 Medical Insurance			
	212 Dental Insurance			
	215 Eye Care Insurance			
	216 Prescription Insurance			
	271 Self-Insurance Medical Benefits		170,818.80	170,818.80
	272 Self-Insurance Dental Benefits		13,751.62	13,751.62
	275 Self-Insurance Eye Care Benefits		2,636.00	2,636.00
	276 Self-Insurance Prescription Benefits		44,707.44	44,707.44
	FUND TOTAL		\$231,913.86	\$231,913.86
60 Internal Service Fund	No Self Insurance data to report			
	211 Medical Insurance			
	212 Dental Insurance			
	215 Eye Care Insurance			
	216 Prescription Insurance			
	271 Self-Insurance Medical Benefits			
	272 Self-Insurance Dental Benefits			
	275 Self-Insurance Eye Care Benefits			
	276 Self-Insurance Prescription Benefits			
	FUND TOTAL			
Total of All Funds		\$9,373,998.04	\$4,154,252.03	\$13,528,250.07

LEA : 123467303 Spring-Ford Area SD

Printed 9/27/2017 10:57:24 AM

Function	Special Education (Prior Year)	Nonspecial Education (Prior Year)	Total (Prior Year)	Special Education (Current Year)	Nonspecial Education (Current Year)	Total (Current Year)
2120 Guidance Services		3,000,429.04	3,000,429.04		3,164,405.57	3,164,405.57
2140 Psychological Services	1,197,630.08		1,197,630.08	1,155,566.55		1,155,566.55
2150 Speech Pathology and Audiology Services						
2160 Social Work Services	18,606.65	114,298.00	132,904.65	19,559.75	120,152.72	139,712.47
2260 Instruction and Curriculum Development Services	672,033.09	703,388.69	1,375,421.78	881,742.16	894,061.77	1,775,803.93
2350 Legal and Accounting Services	288,293.76	124,414.55	412,708.31	159,372.26	150,175.90	309,548.16
2420 Medical Services	426,620.57	281,362.35	707,982.92	401,976.06	3,230.00	405,206.06
2440 Nursing Services		1,157,324.59	1,157,324.59	44,946.50	1,218,393.65	1,263,340.15
2700 Student Transportation Services	1,420,859.64	5,442,821.45	6,863,681.09	1,561,232.31	5,258,244.45	6,819,476.76
Total	\$4,024,043.79	\$10,824,038.67	\$14,848,082.46	\$4,224,395.59	\$10,808,664.06	\$15,033,059.65

LEA : 123467303 Spring-Ford Area SD

Printed 9/27/2017 10:57:25 AM

	(PRINCIPAL AMOUNTS ONLY)							
<u>ALL GOVERNMENTAL FUND TYPES</u>	Short-Term Borrowing	General Obligation Bonds/Notes	Authority Building Obligations	Other Long-Term Debt	Other Post- Employment Benefits (OPEB)	Compensated Absences	Net Pension Liability	Total
1. Debt at Beginning of Fiscal Year		111,655,000.00		13,786,932.00	2,881,214.00	1,987,200.00	174,695,000.00	305,005,346.00
2. Additional Debt Incurred During Year		7,055,000.00			522,483.00	82,163.00	19,885,000.00	27,544,646.00
3. Retirements and Repayments		16,930,000.00		678,074.93				17,608,074.93
4. Debt at End of Fiscal Year		101,780,000.00		13,108,857.07	3,403,697.00	2,069,363.00	194,580,000.00	314,941,917.07
5. Accreted Interest at End Of Fiscal Year								
6. Total Debt and Accreted Interest		101,780,000.00		13,108,857.07	3,403,697.00	2,069,363.00	194,580,000.00	314,941,917.07
7. Current Portion P&I - Due within 1 year		13,853,816.36		1,229,770.85	522,483.00	137,727.00		15,743,797.21
8. Interest Paid during current fiscal year		4,193,816.36		551,695.92				4,745,512.28

(PRINCIPAL AMOUNTS ONLY)								
ALL PROPRIETARY FUND TYPES	Short-Term Borrowing	General Obligation Bonds/Notes	Authority Building Obligations	Other Long-Term Debt	Other Post- Employment Benefits (OPEB)	Compensated Absences	Net Pension Liability	Total
1. Debt at Beginning of Fiscal Year							3,220,000.00	3,220,000.00
2. Additional Debt Incurred During Year							367,000.00	367,000.00
3. Retirements and Repayments								
4. Debt at End of Fiscal Year							3,587,000.00	3,587,000.00
5. Accreted Interest at End Of Fiscal Year								
6. Total Debt and Accreted Interest							3,587,000.00	3,587,000.00
7. Current Portion P&I - Due within 1 year								
8. Interest Paid during current fiscal year								

LEA : 123467303 Spring-Ford Area SD

Printed 9/27/2017 10:57:25 AM

Total Principal and Interest Payments Made by Your School - All Funds

Function	Fund		Principal (910)	Principal (920)	Interest (830)	Total (Principal +Interest)	Misc Other Uses (990)
5110	10	General Fund	9,660,000.00		4,176,137.07	13,836,137.07	
5110	20	Special Revenue Funds					
5110	30	Capital Projects Funds					
5110	40	Debt Service Fund					
5110	90	Permanent Fund					
5120	10	General Fund					
5120	20	Special Revenue Funds					
5120	30	Capital Projects Funds	7,046,032.71		8,967.29	7,055,000.00	
5120	40	Debt Service Fund					
Total Debt Payments - Governmental Funds			\$16,706,032.71		\$4,185,104.36	\$20,891,137.07	

Function	Fund		Principal (910)	Principal (920)	Interest (830)	Total (Principal +Interest)
5110	50	Enterprise Fund				
5110	60	Internal Service Fund				
5120	50	Enterprise Fund				
5120	60	Internal Service Fund				
Total Debt Payments - Proprietary Funds						

LEA : 123467303 Spring-Ford Area SD

Printed 9/27/2017 10:57:25 AM

Bond Details
Governmental Funds

Debt Category	Debt Issue Date (MM/YYYY)	Principal Amounts Only				Current Portion Due Within One Year (Principal and Interest)	Interest Paid During Fiscal Year
		Debt at Beginning of Fiscal Year	Additions	Reductions / Repayments	Debt at End of Fiscal Year		
General Obligation Bonds/Notes – CIB	02/2016		7,055,000.00		7,055,000.00		
General Obligation Bonds/Notes – CIB	06/2015	44,705,000.00		2,830,000.00	41,875,000.00	4,523,444.37	1,693,444.37
General Obligation Bonds/Notes – CIB	03/2012	19,935,000.00		2,185,000.00	17,750,000.00	2,990,550.00	805,550.00
General Obligation Bonds/Notes – CIB	03/2012	8,580,000.00		3,585,000.00	4,995,000.00	3,830,900.00	245,900.00
General Obligation Bonds/Notes – CIB	11/2010	8,195,000.00		8,195,000.00		1,066,585.73	141,585.73
General Obligation Bonds/Notes – CIB	01/2007	30,240,000.00		135,000.00	30,105,000.00	1,442,336.26	1,307,336.26
Other Long Term Debt/Liabilities		13,786,932.00		678,074.93	13,108,857.07	1,229,770.85	551,695.92
Compensated Absences		1,987,200.00	82,163.00		2,069,363.00	137,727.00	
Other Post-Employment Benefits (OPEB)		2,881,214.00	522,483.00		3,403,697.00	522,483.00	
Net Pension Liability		174,695,000.00	19,885,000.00		194,580,000.00		
Totals for Debt Entered:		\$305,005,346.00	\$27,544,646.00	\$17,608,074.93	\$314,941,917.07	\$15,743,797.21	\$4,745,512.28

Bond Details
Proprietary Funds

Debt Category	Debt Issue Date (MM/YYYY)	Principal Amounts Only				Current Portion Due Within One Year (Principal and Interest)	Interest Paid During Fiscal Year
		Debt at Beginning of Fiscal Year	Additions	Reductions / Repayments	Debt at End of Fiscal Year		
Net Pension Liability		3,220,000.00	367,000.00		3,587,000.00		
Totals for Debt Entered:		\$3,220,000.00	\$367,000.00		\$3,587,000.00		

LEA : 123467303 Spring-Ford Area SD

Printed 9/27/2017 10:57:26 AM

General Fund (10)

Section 1: Tuition/Purchased Services as Reported within Expenditure Detail	Amount
Tuition Reported in General Fund Expenditures 1000-560	7,823,400.01
Purchased Services in General Fund Expenditures 1000-594 and 1000-597	11,790.56
Section 1 Total	\$7,835,190.57

Section 2: Tuition Paid to Institution Types During Fiscal Year	Tuition Paid For Nonspecial Education	Tuition Paid For Special Education	Total
1 1306 Institutions	3,238.20	7,032.84	10,271.04
2 Institutionalized Children's Programs	11,790.56		11,790.56
3 Juveniles Incarcerated in Adult Facilities	3,791.85		3,791.85
4 Residential Treatment Facilities			
5 Other Local Education Agencies			
6 Brick and Mortar Charter Schools	833,667.67	314,674.38	1,148,342.05
7 Cyber Charter Schools	713,473.98	612,139.12	1,325,613.10
8 Career and Technology Centers	2,659,011.85		2,659,011.85
9 Approved Private Schools		1,620,038.24	1,620,038.24
10 PA Chartered Schools for the Deaf and Blind			
11 Private Residential Rehabilitative Institutions	37,079.25	973,320.23	1,010,399.48
12 Juvenile Detention Centers			
13 Special Program Jointures			
14 Other Tuition Not Included Elsewhere In This Section	5,412.40	40,520.00	45,932.40
Section 2 Total	\$4,267,465.76	\$3,567,724.81	\$7,835,190.57

1 .	<u>Student Transportation Services for Educational Field Trips</u>	
2 .	<u>Student Transportation Services for Student Activities</u>	
3 .	<u>Rental of Vehicles for Student Transportation Services</u>	
4 .	<u>Capital Reserve Funds</u>	40,807.00

Include only district-owned transportation expenditures paid from State or local money.
DO NOT include federal expenditures or payments to contract service providers.
Contracted transportation services should not be recorded on this schedule.

LEA : 123467303 Spring-Ford Area SD

Printed 9/27/2017 10:57:27 AM

Food Service / Cafeteria Operations Fund (51)

3000 Operation of Non-Instructional Services		Total
100 <u>Personnel Services – Salaries</u>		
100 Personnel Services – Salaries		1,059,845.76
Total Personnel Services – Salaries		\$1,059,845.76
200 <u>Personnel Services – Employee Benefits</u>		
210 Group Insurance – Contracted Provider		1,502.92
220 Social Security Contributions		78,320.14
230 PSERS Retirement Contributions		356,095.35
250 Unemployment Compensation		693.02
260 Workers’ Compensation		6,786.59
270 Group Insurance – Self-Insurance		231,913.86
Total Personnel Services – Employee Benefits		\$675,311.88
400 <u>Purchased Property Services</u>		
410 Cleaning Services		19,294.68
420 Utility Services		2,081.04
430 Repairs and Maintenance Services		48,156.97
Total Purchased Property Services		\$69,532.69
500 <u>Other Purchased Services</u>		
530 Communications		3,288.52
Total Other Purchased Services		\$3,288.52
600 <u>Supplies</u>		
610 General Supplies		59,400.08
620 Energy		4,493.40
630 Food		933,048.55
Total Supplies		\$996,942.03
700 <u>Property</u>		
740 Depreciation		15,721.59
760 Equipment – Replacement		0.39
Total Property		\$15,721.98
800 <u>Other Objects</u>		
810 Dues and Fees		20,603.42
Total Other Objects		\$20,603.42
Total 3000 Operation of Non-Instructional Services		\$2,841,246.28

LEA : 123467303 Spring-Ford Area SD

Printed 9/27/2017 10:57:27 AM

Food Service / Cafeteria Operations Fund (51)

3100 Food Services	<u>Elementary</u>	<u>Secondary</u>	<u>Federal</u>	<u>Total</u>
100 <u>Personnel Services – Salaries</u>				
100 Personnel Services – Salaries				1,059,845.76
Total Personnel Services – Salaries				\$1,059,845.76
200 <u>Personnel Services – Employee Benefits</u>				
210 Group Insurance – Contracted Provider				1,502.92
220 Social Security Contributions				78,320.14
230 PSERS Retirement Contributions				356,095.35
250 Unemployment Compensation				693.02
260 Workers' Compensation				6,786.59
270 Group Insurance – Self-Insurance				231,913.86
Total Personnel Services – Employee Benefits				\$675,311.88
400 <u>Purchased Property Services</u>				
410 Cleaning Services				19,294.68
420 Utility Services				2,081.04
430 Repairs and Maintenance Services				48,156.97
Total Purchased Property Services				\$69,532.69
500 <u>Other Purchased Services</u>				
530 Communications				3,288.52
Total Other Purchased Services				\$3,288.52
600 <u>Supplies</u>				
610 General Supplies				59,400.08
620 Energy				4,493.40
630 Food				933,048.55
Total Supplies				\$996,942.03
700 <u>Property</u>				
740 Depreciation				15,721.59
760 Equipment – Replacement				0.39
Total Property				\$15,721.98
800 <u>Other Objects</u>				
810 Dues and Fees				20,603.42
Total Other Objects				\$20,603.42
Total 3100 Food Services				\$2,841,246.28

	<u>Food Service(51)</u>	<u>Child Care Operations(52)</u>	<u>Other Enterprise(58)</u>	<u>Internal Service(60)</u>	<u>Total</u>
3000 <u>Operation of Non-Instructional Services</u>					
3100 Food Services	2,841,246.28				2,841,246.28
Total Operation of Non-Instructional Services	\$2,841,246.28				\$2,841,246.28
TOTAL ACTUAL EXPENDITURES & OTHER FINANCING USES	\$2,841,246.28				\$2,841,246.28