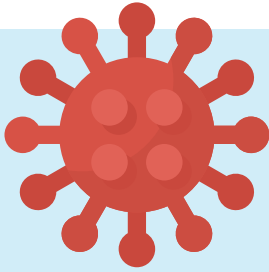


RESPONSE TO POSITIVE COVID-19 CASE OR EXPOSURE

1



Positive COVID-19 case or student/staff symptomatic after a close contact to a confirmed case. Parents/staff should immediately contact the school/district.

2

School will contact Montgomery County Office of Public Health (OPH) to verify a confirmed test result.

OPH will perform contact tracing, and meet with school district to determine next steps. School will analyze all potential shared spaces (cafeteria, etc.).



3

School and Office of Public Health will ask:

- What is the Density and Duration?
- Has anyone been in close contact - within 6 feet of the person who has tested positive for 15 consecutive minutes or more (with or without a mask) or do they live with this person?



IF YES

- OPH will notify those people for contact tracing and quarantine.
- Anyone with close contact will be notified and will need to quarantine/move to virtual learning.
- Anyone with close contact should contact their healthcare provider and be tested for COVID-19. Testing is recommended at least 2-3 days after exposure.
- Anyone with close contact can return to school 14 days after the last date of exposure or 10 days after a positive test or onset of symptoms. In both instances they must be free of symptoms.



IF NO

- Continue to monitor for COVID-19 symptoms as usual, practice social distancing, and good hand hygiene.



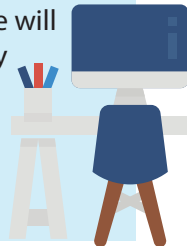
4

The school will notify parents/staff in a specific classroom when a positive case is identified, and will provide notification to all parents in the impacted building when positive cases are confirmed.



5

OPH may recommend a return to virtual instruction in a classroom or a school if there is evidence of transmission within the school. Isolation and Quarantine will be determined by OPH. Periods may vary depending on circumstances. Students/staff may be out of school for 10 to 24 days. Remote learning will be available to these students.



6

Continue to monitor daily for COVID-19 symptoms: Fever or chills, cough, shortness of breath or difficulty breathing, fatigue, muscle or body aches, new severe headache, new loss of taste or smell, sore throat, vomiting, diarrhea. Remain home if sick!



Please refer to the School District's Health and Safety Plan for more details, as well as:
<https://www.montcopa.org/3562/School-Reopening-Guidance>