

Spring-Ford Area School District

School Board Presentation

2014 Assessment Overview

(PSSA/Keystones, SAT, ACT, AP, & SPP)

Dr. David Goodin

Superintendent of Schools

September 15, 2014



Agenda

- ▶ Achievement vs. Growth
- ▶ PSSA & Keystone Exam Results
- ▶ PVAAS Growth Data
- ▶ SAT Results
- ▶ ACT Results
- ▶ AP Results
- ▶ Questions & Answers

Before we begin...



VS.



Achievement vs. Growth

Achievement

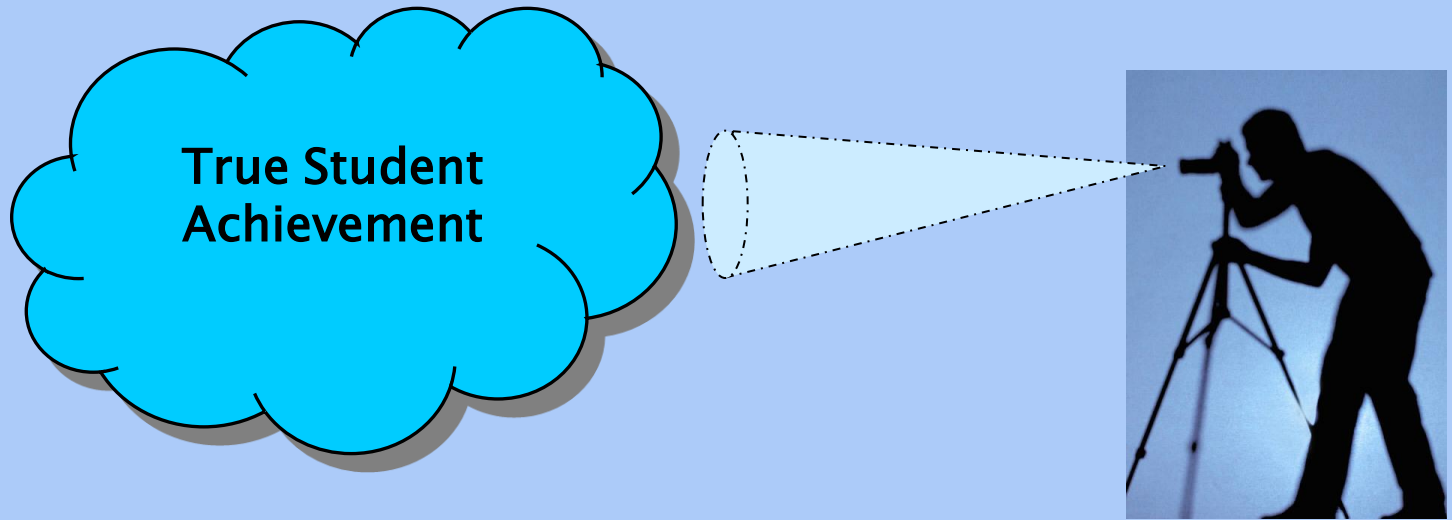
- Measures a student's performance at one single point in time
- Highly correlated with a student's demographics
- Compares student performance to a standard
- Critical to a student's post-secondary opportunities

Growth

- Measures a student's growth across time; i.e., across years
- Not related to a student's demographics
- Compares student performance to his/her own prior performance
- Critical to ensuring a student's future academic success
- By measuring students' academic achievement AND growth, schools and districts have a more comprehensive picture of their own effectiveness in raising student achievement.

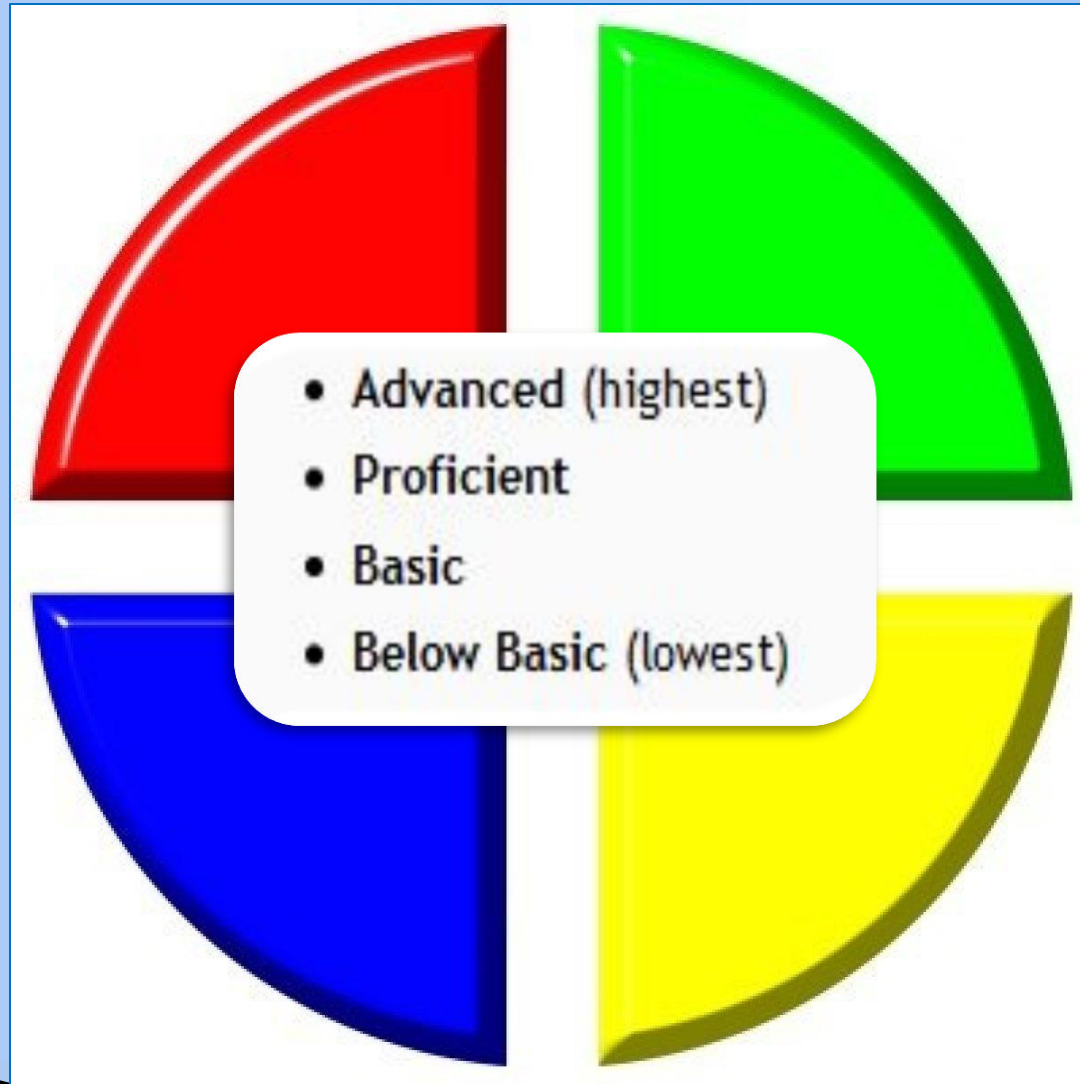


The Assessment Dilemma



**Any achievement test (PSSA or Keystone Exam)
is just a... snapshot in time!**

Achievement Data (PSSA/Keystone)



Data Review:

2013 2014

PSSA & PASA Results (2014)

SPRING-FORD ELEMENTARY SCHOOLS (MATH)

Student Proficiency (DRC/eMetric Levels) on PSSA (2006–2014)



MATH	2006	2007	2008	2009	2010	2011	2012	2013	2014
Brooke	94.7%	92.7%	95.9%	95.5%	97.1%	94.0%	92.1%	88.5%	85.6%
Evans	N/A	N/A	88.1%	88.6%	91.1%	87.7%	89.8%	88.1%	89.6%
Limerick	96.4%	92.6%	92.8%	92.7%	89.4%	93.1%	93.4%	89.0%	85.1%
Oaks	92.8%	95.4%	93.8%	93.8%	94.6%	94.7%	94.9%	90.0%	90.8%
Royersford	95.8%	92.8%	89.7%	89.4%	92.5%	92.6%	90.0%	80.8%	72.3%
Spring City	90.9%	95.3%	81.9%	82.6%	80.9%	77.4%	77.6%	61.6%	85.4%
Upper Providence	94.7%	91.8%	94.2%	97.1%	96.7%	91.5%	93.8%	91.4%	91.3%

SPRING-FORD ELEMENTARY SCHOOLS (MATH)

Student Proficiency (DRC/eMetric Levels) on PSSA (2014)



Grade Level & Special Education Percentages:

MATH	GRADE	2014 (All)	2014 (Special Education)
Brooke	3 rd	82.2%	54.6%
	4 th	88.9%	52.6%
Evans	3 rd	87.8%	62.5%
	4 th	91.4%	52.3%
Limerick	3 rd	83.9%	55.6%
	4 th	86.2%	59.1%
Oaks	3 rd	90.2%	68.8%
	4 th	91.3%	75.0%
Royersford	3 rd	72.2%	72.0%
	4 th	72.3%	47.4%
Spring City	3 rd	85.7%	60.0%
	4 th	85.0%	50.0%
Upper Providence	3 rd	90.4%	79.3%
	4 th	92.2%	79.4%



SPRING-FORD ELEMENTARY SCHOOLS (READING)

Student Proficiency (DRC/eMetric Levels) on PSSA (2006–2014)

READING	2006	2007	2008	2009	2010	2011	2012	2013	2014
Brooke	90.7%	89.3%	89.0%	91.1%	95.8%	91.6%	92.7%	85.9%	85.4%
Evans	N/A	N/A	84.3%	83.3%	85.1%	83.0%	81.4%	80.9%	82.5%
Limerick	92.0%	89.1%	92.8%	89.9%	81.0%	81.4%	86.1%	82.5%	75.8%
Oaks	87.2%	90.1%	87.9%	87.2%	90.6%	85.4%	88.9%	88.1%	85.1%
Royersford	82.4%	85.0%	87.6%	89.2%	89.0%	89.4%	81.3%	80.0%	70.2%
Spring City	85.0%	87.4%	82.1%	86.1%	70.8%	71.0%	71.1%	63.4%	82.9%
Upper Providence	86.4%	89.4%	88.7%	93.7%	92.6%	88.3%	88.5%	85.8%	87.3%



SPRING-FORD ELEMENTARY SCHOOLS (READING)

Student Proficiency (DRC/eMetric Levels) on PSSA (2014)

Grade Level & Special Education Percentages:

READING	GRADE	2014 (All)	2014 (Special Education)
Brooke	3 rd	85.7%	54.5%
	4 th	85.1%	47.3%
Evans	3 rd	77.1%	41.7%
	4 th	87.9%	42.9%
Limerick	3 rd	71.9%	55.6%
	4 th	79.7%	45.4%
Oaks	3 rd	85.8%	62.5%
	4 th	84.3%	62.5%
Royersford	3 rd	66.7%	48.0%
	4 th	73.3%	31.6%
Spring City	3 rd	85.7%	60.0%
	4 th	80.0%	50.0%
Upper Providence	3 rd	87.6%	68.9%
	4 th	87.0%	67.7%

SFASD SECONDARY SCHOOLS (MATH)

Student Proficiency (DRC/eMetric Levels) on PSSA (2006–2014)



MATH	2006	2007	2008	2009	2010	2011	2012	2013	2014
5 th /6 th Center	86.8%	88.3%	89.9%	90.3%	90.8%	90.4%	88.7%	89.3%	89.0%
7 th Grade Center	85.3%	87.8%	92.1%	95.4%	95.1%	96.1%	95.3%	94.9%	94.5%
8 th Grade Center	80.0%	91.5%	88.3%	90.7%	93.4%	94.4%	95.2%	92.2%	92.4%
Senior HS	66.3%	62.5%	75.6%	65.0%	76.4%	76.5%	81.4%	N/A	N/A

N/A – Due to Keystone Exams

SFASD SECONDARY SCHOOLS (MATH)

Student Proficiency (DRC/eMetric Levels) on PSSA (2014)



Grade Level & Special Education Percentages:

MATH	2014 (All)	2014 (Special Education)
5 th Gr. Center	85.6%	57.5%
6 th Gr. Center	92.3%	67.6%
7 th Grade Center	94.5%	70.8%
8 th Grade Center	92.4%	62.5%
Senior HS	N/A	N/A

N/A – Due to Keystone Exams

SFASD SECONDARY SCHOOLS (READING)

Student Proficiency (DRC/eMetric Levels) on PSSA (2006–2014)



READING	2006	2007	2008	2009	2010	2011	2012	2013	2014
5 th /6 th Center	77.0%	78.4%	80.8%	78.7%	81.4%	82.2%	81.8%	80.2%	81.1%
7 th Grade Center	79.4%	79.4%	91.7%	89.4%	92.0%	93.7%	94.9%	91.4%	90.1%
8 th Grade Center	79.8%	91.5%	93.2%	96.0%	96.3%	96.9%	95.2%	95.9%	95.6%
Senior HS	76.4%	73.1%	75.6%	68.0%	78.1%	78.3%	81.0%	N/A	N/A

N/A – Due to Keystone Exams

SFASD SECONDARY SCHOOLS (READING)

Student Proficiency (DRC/eMetric Levels) on PSSA (2014)



Grade Level & Special Education Percentages:

READING	2014 (All)	2014 (Special Education)
5 th Gr. Center	79.0%	44.7%
6 th Gr. Center	83.2%	44.8%
7 th Grade Center	90.1%	60.4%
8 th Grade Center	95.6%	77.7%
Senior HS	N/A	N/A

N/A – Due to Keystone Exams

SFASD (SCIENCE)

Student Proficiency (DRC/eMetric Levels) on PSSA (2011 –2014)



SCIENCE	2011	2012	2013	2014
Grade 4	95.0%	93.5%	91.0%	90.4%
Grade 8	92.0%	89.2%	90.2%	88.8%
Grade 11	60.0%	59.1%	N/A	N/A

N/A – Due to Keystone Exams

SFASD (SCIENCE)

Student Proficiency (DRC/eMetric Levels) on PSSA (2014)



Grade Level & Special Education Percentages:

SCIENCE	BUILDING	2014 (All)	2014 (Special Education)
Grade 4	Brooke	86.5%	55.0%
	Evans	90.5%	52.4%
	Limerick	94.6%	81.8%
	Oaks	87.0%	58.9%
	Royersford	91.0%	73.7%
	Spring City	90.0%	75.0%
	UPE	93.1%	88.2%
Grade 8	96.7%	92.7%	55.8%
Grade 11	N/A	N/A	N/A

N/A – Due to Keystone Exams

SFASD (WRITING)

Student Proficiency (DRC/eMetric Levels) on PSSA (2011 – 2014)

WRITING	2011	2012	2013	2014
Grade 5	77.0%	79.6%	82.1%	75.4%
Grade 8	95.0%	93.4%	96.7%	92.7%
Grade 11	91.0%	92.0%	N/A	N/A

N/A – Due to Keystone Exams

SFASD (WRITING)

Student Proficiency (DRC/eMetric Levels) on PSSA (2014)

Grade Level & Special Education Percentages:

WRITING	2014 (All)	2014 (Special Education)
Grade 5	75.4%	49.1%
Grade 8	92.7%	74.1%
Grade 11	N/A	N/A

N/A – Due to Keystone Exams

Spring-Ford: 2014 Highlights...

- ▶ **Spring City Elementary Hybrid Learning School**

Spring City-PSSAs('13 vs. '14)



2013 & 2014 PSSA FINAL Data Comparison (Spring City Elementary)

2013	2014
63.4%	82.9%
61.6%	85.4%
62.9%	90.0%

Increase/Decrease

(All Students)

Reading (+19.5%)

Math (+23.8%)

Science (+27.1%)

Cohort Students 3rd Grade student in 2013 who promoted 4th Grade in 2014

MATH:

ALL STUDENTS

Advanced (+/- 0)

Proficient (+ 7)

Basic (- 9)

Below Basic (+ 1)

IEP

Advanced (+/- 0)

Proficient (+ 3)

Basic (- 1)

Below Basic (+/- 0)

ED

Advanced (+ 1)

Proficient (+ 6)

Basic (- 4)

Below Basic (- 1)

READING:

ALL STUDENTS

Advanced (+ 5)

Proficient (- 5)

Basic (- 1)

Below Basic (+/- 0)

IEP

Advanced (+ 1)

Proficient (+ 1)

Basic (- 1)

Below Basic (+ 1)

ED

Advanced (+ 2)

Proficient (+/- 0)

Basic (+/- 0)

Below Basic (+/- 0)

KEY: **Bold & Italic = Positive change**

Increase/Decrease (All)

IEP: Reading +49.4%

Math +18.8%

Science +19.4%

ED: Reading +23.7%

Math +39.0%

Science +30.1%

2013-14 PVAAS Results (Available Fall 2014)

Algebra Keystone Results

9th Grade Algebra

	2013 – Class of 2016 369 67%	2014 – Class of 2017 351 74%
Advanced	112 (31%)	118 (33%)
Proficient	136 (36%)	144 (41%)
Basic	96 (26%)	70 (20%)
Below Basic	25 (7%)	22 (5%)

Literacy Keystone Results

	2013 – Class of 2016 547 81%	2014 – Class of 2017 571 81%
Advanced	112 (21%)	81 (14%)
Proficient	331 (60%)	387 (67%)
Basic	92 (17%)	93 (16%)
Below Basic	12 (2%)	12 (2%)

Biology Keystone Results – 9th Grade Honors Biology

	2013 – class of 2016 78 100%	2014 – Class of 2017 119 99%
Advanced	72 (92%)	97 (81%)
Proficient	6 (8%)	21 (18%)
Basic		1
Below Basic		

Biology Keystone Results

10–12 Center

Special Ed. #'s in Red

	2013 – Class of 2015 478 75%	2014 – Class of 2016 454 78%
Advanced	133 (28%)	213 (47%) 11 (12%)
Proficient	225 (47%)	141 (31%) 25 (26%)
Basic	83 (17%)	63 (14%) 33 (35%)
Below Basic	34 (7%)	39 (8%) 26 (27%)

Biology Keystone Cohort Results

	Class of 2016 532 82%
Advanced	285 (54%) 11 (12%)
Proficient	147 (28%) 25 (26%)
Basic	63 (14%) 33 (35%)
Below Basic	39 (8%) 26 (27%)

Keystone Results

Special Education Students

9th Grade Results

	2013 Literacy - 95 39%	2014 Literacy - 92 40%	2013 Algebra - 93 25%	2014 Algebra - 87 39%
Advanced	1	0	4 (5%)	9 (10%)
Proficient	37 (38%)	37 (40%)	19 (20%)	25 (29%)
Basic	48 (50%)	45 (49%)	50 (54%)	37 (43%)
Below Basic	12 (12%)	10 (11%)	19 (20%)	16 (18%)

Looking Ahead...2014–15

Keystones & PSSAs

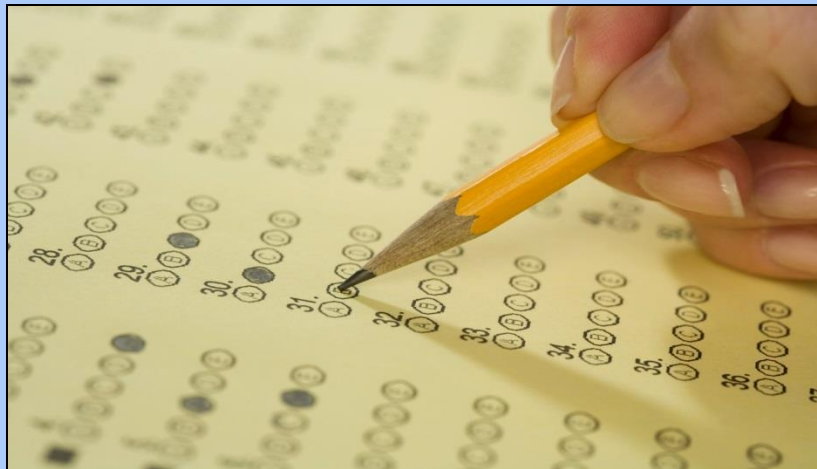
▶ Keystone Exams:

- Winter:
 - Wave 1: December 3–17, 2014
 - Algebra I, Biology, Literature
- Spring:
 - May 13–27, 2015
 - Algebra I, Biology, Literature

▶ PSSA Exams:

- ELA – April 13–17, 2015 (Grades 3–8)
- Math – April 20–24, 2015 (Grades 3–8)
- Science – April 27–May1, 2015 (Grades 4 & 8)
- Make-ups – May 4–8, 2015 (As needed)

AP Results



AP: SFASD (2012)

AP Current Year Score Summary (2012)

This report lists the total numbers of each score (1 to 5) for each AP subject.

✓ Data Updated Jul 23, 2012, Report Run Sep 21, 2012

Disciplines : All

Spring-Ford Senior High School (394300)

Total AP Students in Your School: **232**

School Totals for this View	5	4	3	2	1	Total Exams
Number of Exams	140	88	91	53	6	378
Percentage of Total	37	23	24	14	2	100

AP: SFASD (2013)

Spring-Ford Senior High School (394300)

Total AP Students in Your School: 288

School Totals for this View	5	4	3	2	1	Total Exams
Number of Exams	159	150	132	54	9	504
Percentage of Total Exams	32	30	26	11	2	100
Number of AP Students	115	121	114	49	9	


AP: SFASD (2014)

Print

AP Current Year Score Summary (2014)

This report lists the total numbers of each score (1 to 5) for each AP subject and the total number of unique students for each AP score.

✓ Data Updated Aug 6, 2014, Report Run Aug 16, 2014

Show : 

Disciplines : All Disciplines

Spring-Ford Senior High School (394300)

Total AP Students in Your School: 370

School Totals for this View	5	4	3	2	1	Total Exams
Number of Exams	198	193	171	84	14	660
Percentage of Total Exams	30	29	26	13	2	100
Number of AP Students	127	161	150	75	14	

2012 AP Scholars: Total Scholars 57

AP School Scholar Roster (2012)

This roster shows all students who earned an AP Scholar Award in 2012. The AP Program offers several AP Scholar courses and exams.

✓ Data Updated Jul 23, 2012, Report Run Sep 21, 2012

Spring-Ford Senior High School (394300) Total Scholars: 57; Average Score: 4.21

	AP Scholar	AP Scholar with Honor	AP Scholar with Distinction
Number of Scholars	37	9	11
Average Score	4.08	4.24	4.46

2013 AP Scholars: Total Scholars 78

Spring-Ford Senior High School (394300) Total Scholars: 78; Average Score: 4.18

	AP Scholar	AP Scholar with Honor	AP Scholar with Distinction
Number of Scholars	27	25	26
Average Score	4.14	3.95	4.38

2014 AP Scholars: Total Scholars 115

AP School Scholar Roster (2014)

This roster shows all students who earned an AP Scholar Award in 2014. The AP Program offers several AP Scholar Awards to recognize students who have demonstrated college-level achievement through AP courses and exams.

✓ Data Updated Aug 6, 2014, Report Run Aug 11, 2014

Schools : All

Grade Levels : All

AP Scholar Awards : All

[<< Customize Report](#)

Spring-Ford Senior High School (394300) Total Scholars: 115; Average Score: 4.17

	AP Scholar	AP Scholar with Honor	AP Scholar with Distinction	National AP Scholar
Number of Scholars	52	24	39	1
Average Score	3.93	4.04	4.38	4.75

AP Five-Year School Score Summary (2014)

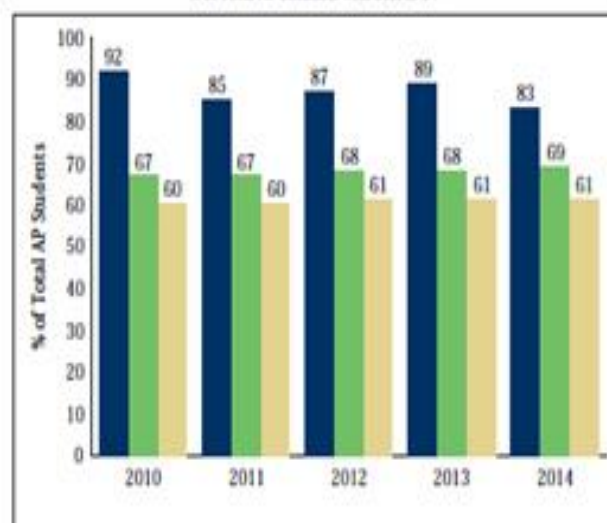
[Print / Download Options](#)

This report shows five years of data at the school, state and global levels. On the first page, a graph illustrates the year-over-year change in the percentage of AP students with scores of 3 or higher, next to a table that provides the overall total exams, total unique students and both the number and percentage of AP students with one or more scores of 3 or higher. On subsequent pages, the report provides subject-specific summary data by year; total exams, total exams by score and mean score.

✓ Data Updated Aug 6, 2014. Report Run Aug 11, 2014

Spring-Ford Senior High School (394300)

% of Total AP Students with Scores 3+



■ Spring-Ford Senior High School (394300) ■ Pennsylvania ■ Global

■ % of Total AP Students with Scores 3+

■ % of Total AP Students with Scores 3+

■ % of Total AP Students with Scores 3+

2010 2011 2012 2013 2014

Spring-Ford Senior High School (394300)

Total AP Students	198	205	232	288	370
Number of Exams	305	314	378	504	660
AP Students with Scores 3+	182	175	202	257	308
% of Total AP Students with Scores 3+	91.9	85.4	87.1	89.2	83.2

Pennsylvania

Total AP Students	50,805	54,659	57,018	61,256	64,465
Number of Exams	84,589	91,960	97,390	105,359	112,795
AP Students with Scores 3+	34,233	36,600	38,902	41,853	44,545
% of Total AP Students with Scores 3+	67.4	67.1	68.2	68.3	69.1

Global

Total AP Students	1,855,310	1,982,133	2,106,843	2,225,625	2,350,092
Number of Exams	3,236,335	3,475,395	3,714,079	3,955,410	4,194,692
AP Students with Scores 3+	1,116,959	1,193,062	1,295,051	1,354,800	1,440,376
% of Total AP Students with Scores 3+	60.2	60.2	61.5	60.9	61.3

ACT Results

ACT

Mean Scores

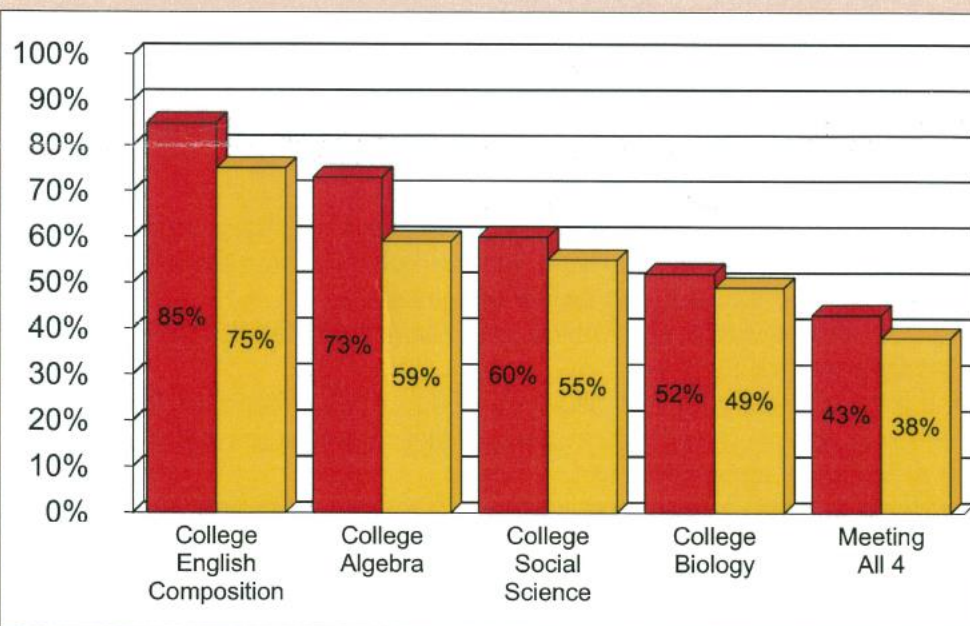
		English		Math		Reading		Science	
	# of students testing	Spring–Ford	PA	Spring–Ford	PA	Spring–Ford	PA	Spring–Ford	PA
2014	272	23.0	22.1	24.4	22.8	23.6	23.0	23.0	22.2
2013	300	23.1	22.2	24.8	23.0	24.1	23.0	23.5	22.2
2012	215	22.8	22.0	24.2	22.7	23.3	22.7	23.5	21.9
2011	211	22.8	21.9	24.9	22.6	23.5	22.6	23.4	21.8
2010	156	22.9	21.3	24.1	22.1	23.4	22.1	23.0	23.5

Table 1: Five Year Trends - Average ACT Scores

Grad Year	Total Tested		English		Mathematics		Reading		Science		Composite	
	District	State	District	State	District	State	District	State	District	State	District	State
2010	156	24,323	22.9	21.3	24.1	22.1	23.4	22.1	23.0	21.4	23.5	21.9
2011	211	24,280	22.8	21.9	24.9	22.6	23.5	22.6	23.4	21.8	23.8	22.3
2012	215	25,426	22.8	22.0	24.2	22.7	23.3	22.7	23.5	21.9	23.6	22.4
2013	300	26,171	23.1	22.2	24.8	23.0	24.1	23.0	23.5	22.2	24.0	22.7
2014	272	27,136	23.0	22.1	24.4	22.8	23.6	23.0	23.0	22.2	23.6	22.7

RECEIVED
AUG 19 2014
SPRING-FORD SCHOOL DIST.

Figure 1. Percent of ACT-Tested Students Ready for College-Level Coursework



Are Your Students Ready for College?

While students will pursue a variety of paths after high school, all students should be prepared for college and work. Through collaborative research with postsecondary institutions nationwide, ACT has established the following as college readiness benchmark scores for designated college courses:

- * English Composition: 18 on ACT English Test
- * Algebra: 22 on ACT Mathematics Test
- * Social Science: 22 on ACT Reading Test
- * Biology: 23 on ACT Science Test

■ Your District
■ State

A benchmark score is the minimum score needed on an ACT subject-area test to indicate a 50% chance of obtaining a B or higher or about a 75% chance of obtaining a C or higher in the corresponding credit-bearing college courses.

2013-14 SAT Results

SAT

Mean Scores

	# Tested	Critical Reading		Mathematics		Writing	
		Spring- Ford	PA	Spring- Ford	PA	Spring- Ford	PA
2014	443	518	497	543	513	508	480
2013	427	514	493	541	501	505	479
2012	431	506	492	533	501	491	480
2011	427	515	493	544	501	501	483
2010	409	506	492	533	501	491	480

Looking Ahead...2014-15

AP, ACT, PSAT & SAT

▶ AP Exams:

- May 4-15, 2015

▶ ACT Exams:

- September 13, 2014
- December 13, 2014
- April 18, 2015

▶ PSAT Exams:

- ▶ October 15, 2014 (Sophomores)

▶ SAT Exams:

- ▶ October 11, 2014
- ▶ January 24, 2015
- ▶ May 2, 2015

Questions & Answers

