

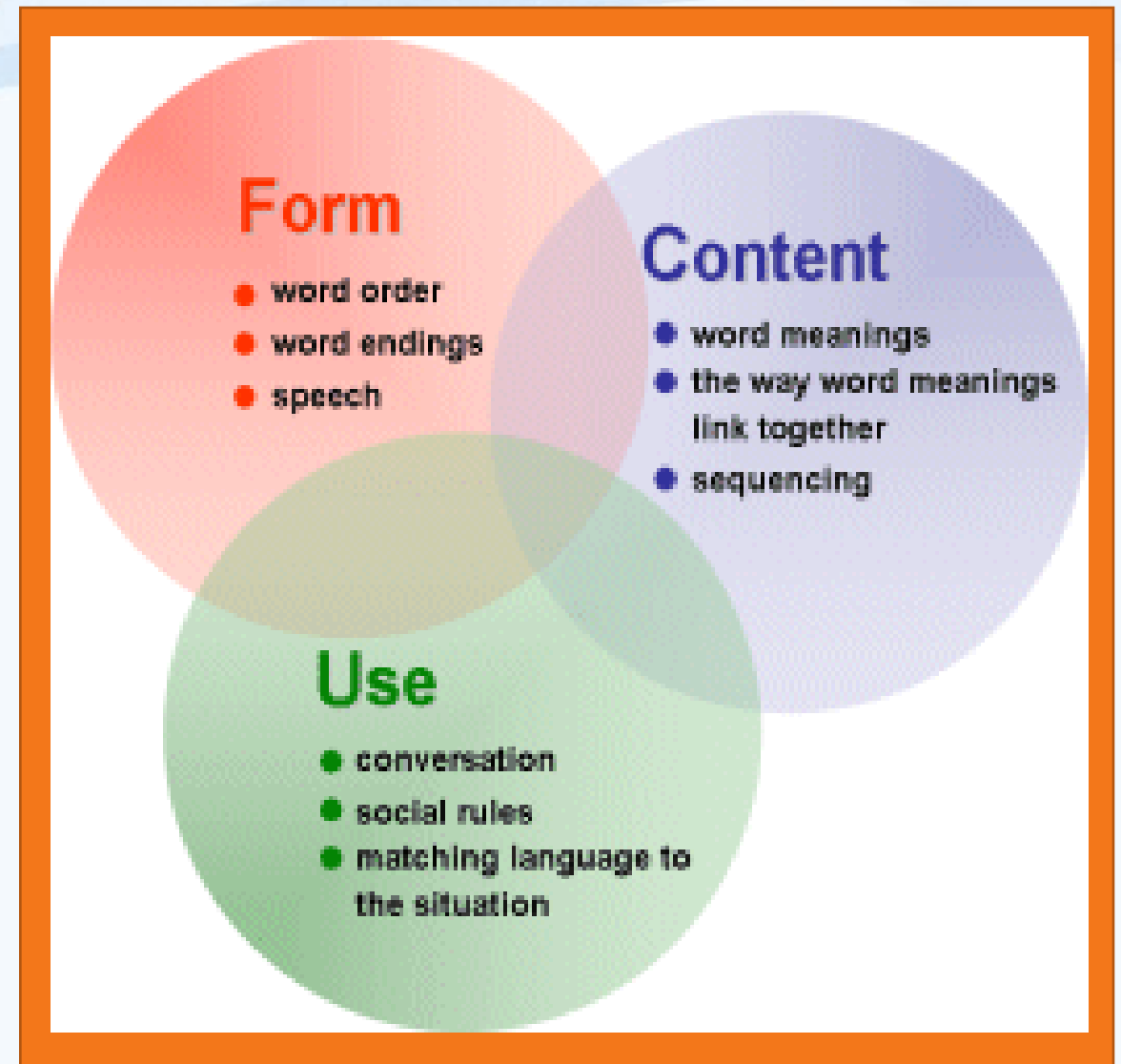


Speech/Language Support

Jamie McGee
Speech/Language Clinician
Royersford Elementary School

Components of language

- FORM, or structure
(how it's said)
- CONTENT, or meaning
(what is said)
- USE, or purpose
(why it's said)

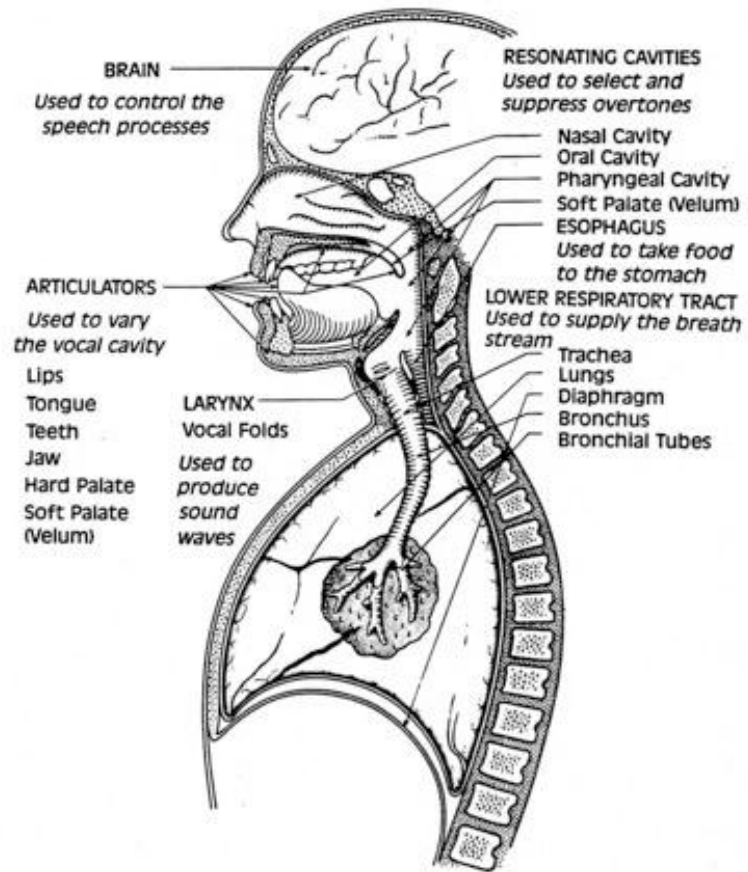


From slc.cambridgeshire.nhs.uk

So many things to consider!!

- Receptive Language:
Can a child **understand** language in these 3 areas?
- Expressive Language:
Can a child **express** him/herself with language in these 3 areas?

	Receptive Language	Expressive Language
Form	?	?
Content	?	?
Use	?	?



Anatomy of speech sound production

From onlinevoicecoaching.com



Levels of articulation practice

From speechbuddy.com



Language Development

It begins even before babies are born! It occurs through natural interactions with and exposure to other people.



Volume

From iconarchive.com



Pitch



Quality

From felttip.com

Components of Voice

Stuttering

Many famous people have overcome it!



From sportsillustrated.com



From imdb.com



From stutteringhelp.com



From stutteringhelp.com

Supporting needs in speech/language

- Assess for strengths/needs
- Set goals
- Support needs by:
 - first teaching
 - then practicing



From studentsuccess.unc.edu

Materials used to practice

Workbooks/worksheets

Flash cards

Joke books

Picture books

Mirrors

Toys

Auditory recordings

Interviews

Phone calls

Role play

Barrier games

Board games

Websites

iPad apps

done

10/10 100%

p /p/

initial

medial

final

Spin target words in Rotating Sentences!

Kip brought the  on the ship. 

spin

record

Articulation Station PRO

done

Penny and her Puppy

10/10 100%

p /p/

initial

medial

final

level 1

level 2

Penny took her puppy for a walk down the path.

record

Stories with picture prompts!

level 1 story

Behind-Between-Beside

10 / 21

The alligator is _____ the boats.



beside

between

behind

Preposition Builder

In-On-Under

4 / 21

The animals live _____ in _____ the forest.



Record

Save Recording

Play Recording

Next Sentence

Lexico Cognition

The blue one and the green one are the same size.

Compare the blocks!

This interface features a grid of images showing various colored blocks (red, blue, yellow, green) in different sizes and orientations. A speech bubble contains the text "The blue one and the green one are the same size." and another speech bubble says "Compare the blocks!". A small speaker icon is visible in the bottom right corner.

The rooster is to the right of the tree.

This interface features a 3x3 grid of images showing a rooster, a duck, and a tree in various positions. A speech bubble contains the text "The rooster is to the right of the tree." and a small speaker icon is visible in the bottom right corner.

Resources

Spring-ford.net

Hover mouse over 'Departments' and click on 'Speech & Language'

Asha.org

American Speech-Language-Hearing Association

Speech-language-therapy.com

Speechlanguage-resources.com

Mommyspeechtherapy.com



Any questions?

Thanks so much for listening 😊